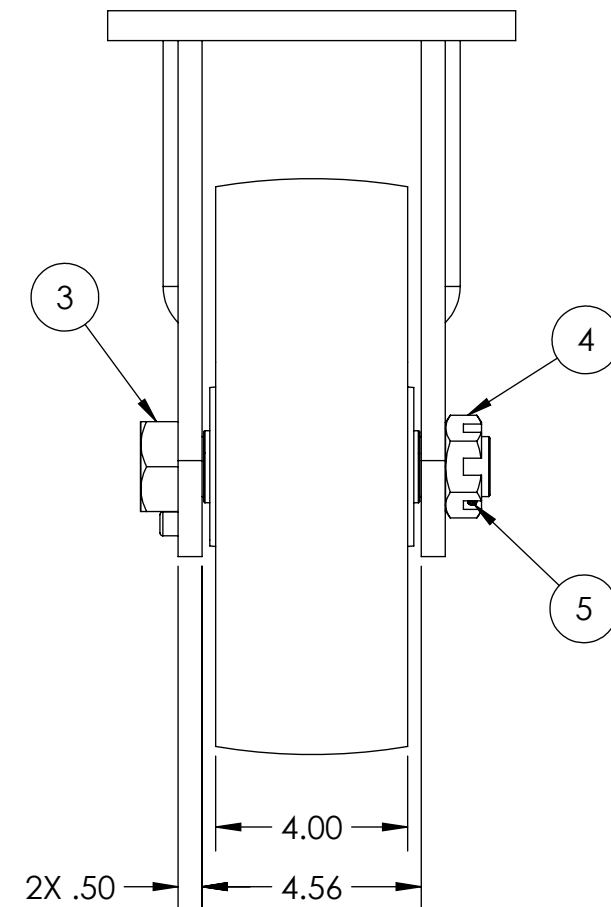
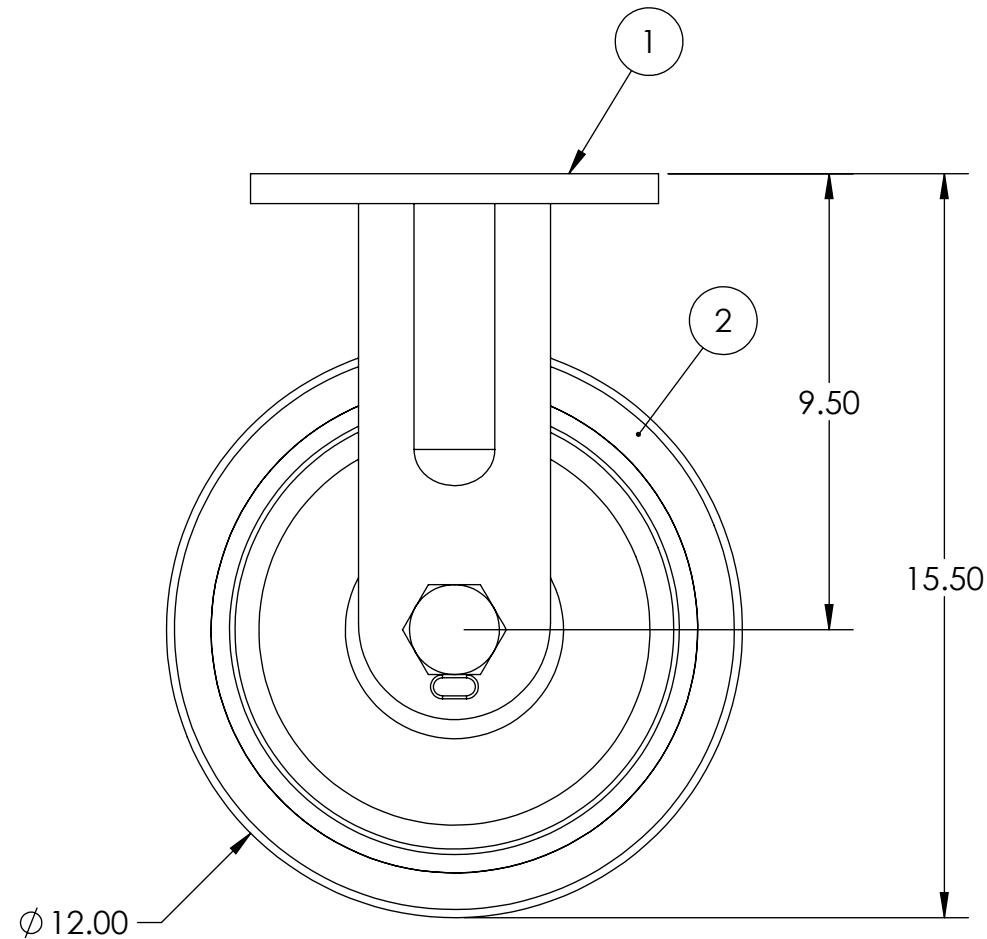

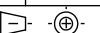


ITEM NO.	QTY.	PART/DRAWING NO.	DESCRIPTION	MATERIAL
1	1	90-12400-00-2	90 SER. 12.00 X 4.00 COATED RIGID RIG	AISI 1008
2	1	12409-96-20	Ø12.00 X 4.00 T/R-95 POLY TB WHEEL	MISC.
3	1	AX201040	1-1/4-12 X 6-1/2 GRADE 5 HHCS	AISI 1038
4	1	SN201216	1-1/4 -12 SLOTTED JAM NUT ZINC PLATED	STEEL
5	1	KY032800	3/16 X 1-3/4 ROLL PIN	STEEL

NOTE:
1. CASTER IS RATED FOR 6,300 LBS AT WALKING SPEEDS, INTERMITTENT USE



 <div>CASTER CONCEPTS, INC.</div>	16000 E. MICHIGAN AVE. ALBION, MI 49224 (517) 629-8838 casterconcepts.com	TOLERANCE SPECS.	UNLESS OTHERWISE SPECIFIED THE FOLLOWING TOLERANCES APPLY: XX = ±.030 .XXX = ±.010 X° = ±1.0° PART TO BE FREE OF BURRS AND SHARP EDGES			DESCRIPTION:	90 SER. 12.00 X 4.00 RIGID CASTER			
						PART / DRAWING NO:	90-12409-96-2	DATE:	1/13/2025	
WHERE USED:		FINISH SPECS.	GOLD POWDER COATING ON RIG , GRAY PAINT ON WHEEL CORE					SCALE:	1:4	B-SIZE
CHECKED BY:	TARUN B.	MATERIAL SPECS.		APPROVED BY:		DRAWN BY:	BRIJMOHAN		THIRD ANGLE	

NOTICE: THIS DRAWING AND DESIGN INFORMATION CONTAINED HEREIN SHALL REMAIN THE SOLE PROPERTY OF CASTER CONCEPTS INC. IT IS SUBMITTED FOR USE IN REFERENCE ONLY AND SHALL NOT BE DUPLICATED OR GIVEN TO A THIRD PARTY WITHOUT THE WRITTEN CONSENT OF CASTER CONCEPTS INC. THIS DRAWING MUST BE RETURNED TO CASTER CONCEPTS INC. UPON REQUEST AT ANY TIME. ACCEPTANCE OF THIS DRAWING SHALL BE CONSTRUED AS AN AGREEMENT OF THESE TERMS.