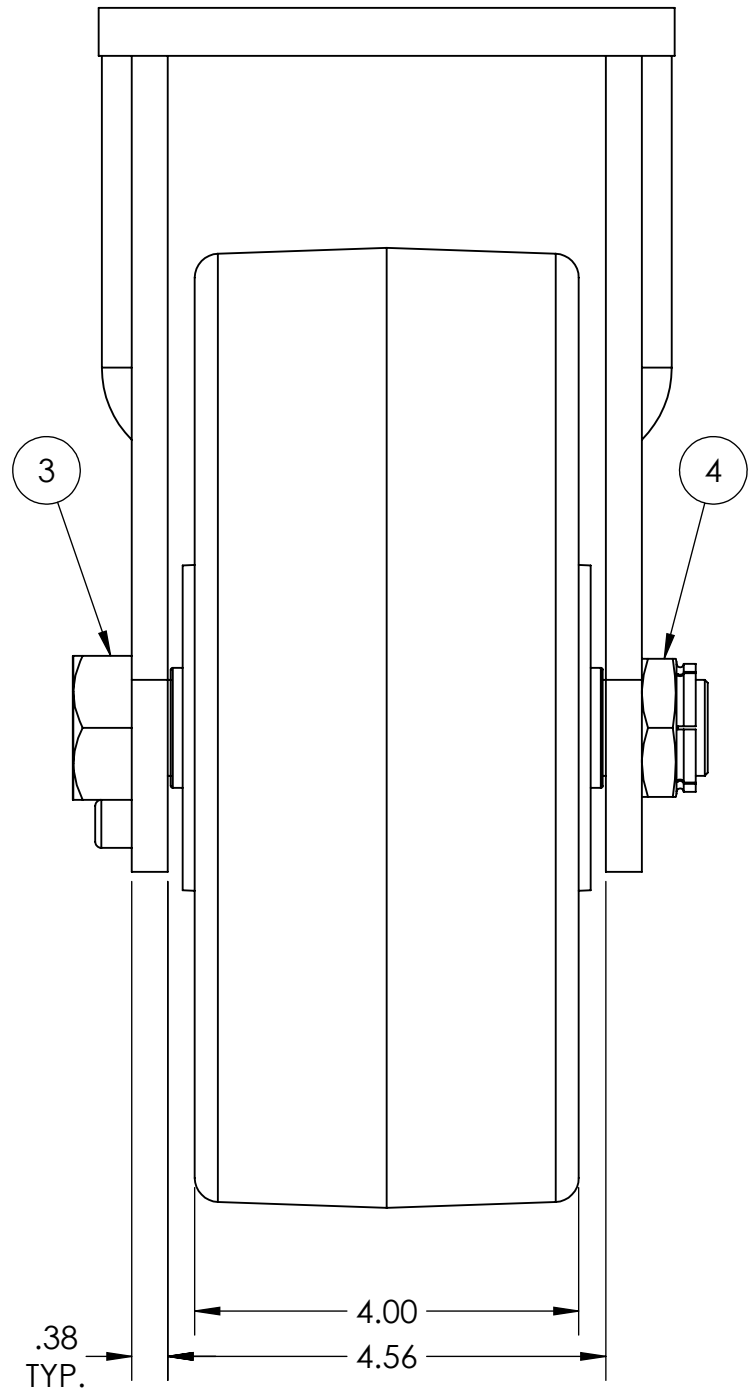
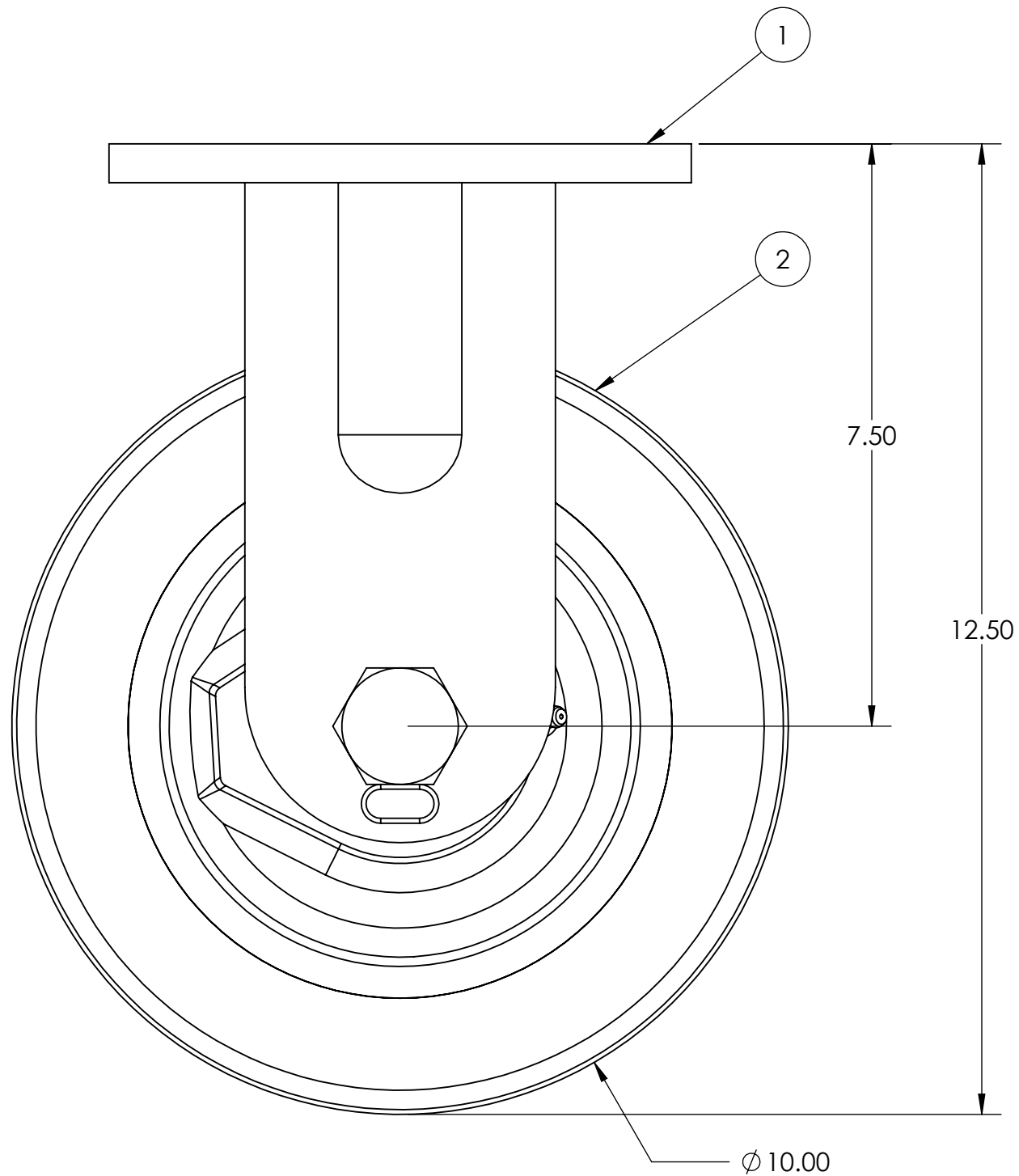
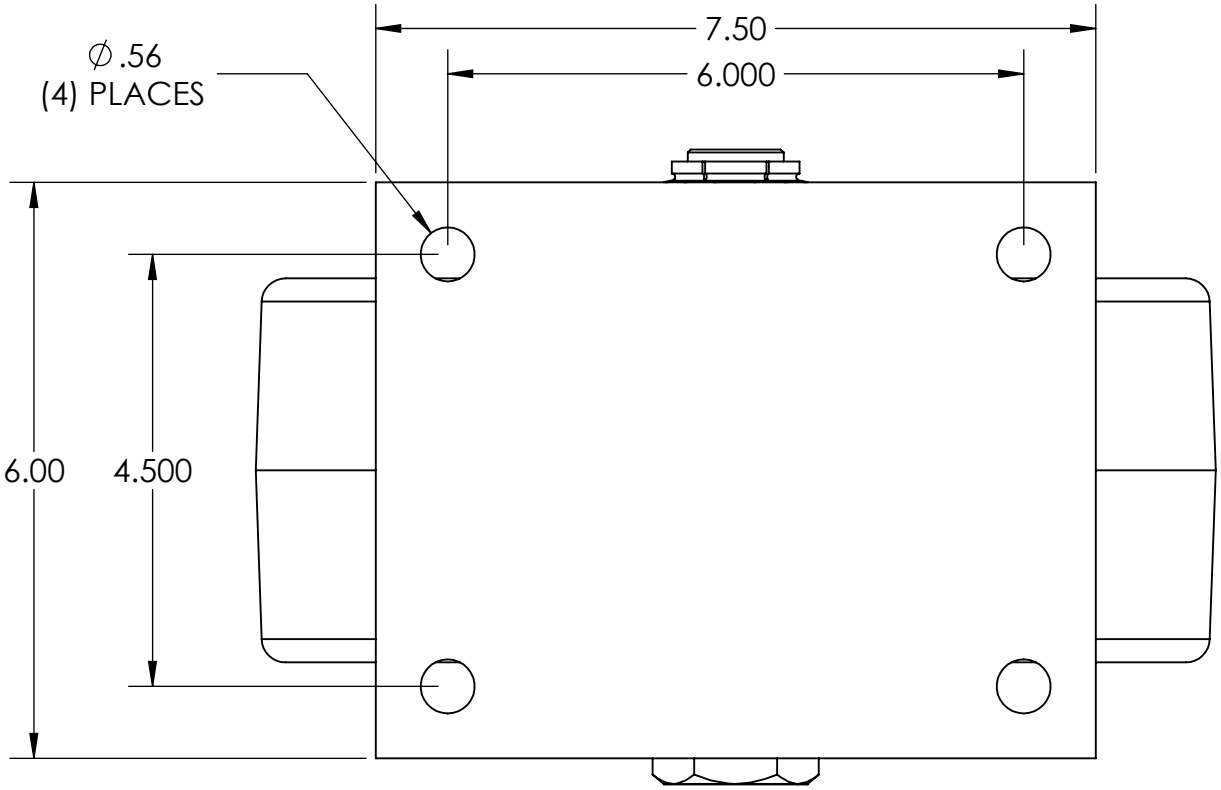
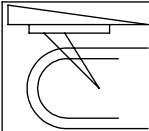
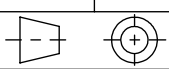


ITEM NO.	QTY.	PART/DRAWING NO.	DESCRIPTION	MATERIAL
1	1	80-10400-00-2	80 SER. 10.00 X 4.00 COATED RIGID RIG	MISC.
2	1	10409-96-16	Ø10.00 X 4.00 T/R-95 TB POLY WHEEL	MISC.
3	1	AX169600	1-14 X 6 GRADE 5 HHCS	AISI 1038
4	1	LN161413	1"-14 LOW HEIGHT FLEXLOC NUT	STEEL



PRAVEEN K.	A	WAS GOLD DICHROMATE PLATING	7/25/2017
REV. APPROVALS	NO.	REVISION	DATE

 CASTER CONCEPTS, INC. 16000 E. MICHIGAN AVE. ALBION, MI 49224 (517) 629-8838 casterconcepts.com	TOLERANCE SPECS.		UNLESS OTHERWISE SPECIFIED THE FOLLOWING TOLERANCES APPLY: .XX = ±.030 .XXX = ±.010 X° = ±1.0° PART TO BE FREE OF BURRS AND SHARP EDGES		DESCRIPTION:		80 SER. 10.00 X 4.00 RIGID CASTER	
	FINISH SPECS.		GOLD POWDER COATING ON RIG, GRAY PAINT ON WHEEL CORE (A)		PART/DRAWING NO:		80-10409-96-2	DATE: 9/21/2014
WHERE USED:		MATERIAL SPECS.		APPROVED BY: KAREN TRAVIS		DRAWN BY: BRIAN CHOMIC		SCALE: 1:2 C-SIZE
CHECKED BY:						THIRD ANGLE		

NOTICE:THIS DRAWING AND DESIGN INFORMATION CONTAINED HEREIN SHALL REMAIN THE SOLE PROPERTY OF CASTER CONCEPTS INC. IT IS SUBMITTED FOR USE IN REFERENCE ONLY AND SHALL NOT BE DUPLICATED OR GIVEN TO A THIRD PARTY WITHOUT THE WRITTEN CONSENT OF CASTER CONCEPTS INC. THIS DRAWING MUST BE RETURNED TO CASTER CONCEPTS INC. UPON REQUEST AT ANY TIME. ACCEPTANCE OF THIS DRAWING SHALL BE CONSTRUED AS AN AGREEMENT OF THESE TERMS.