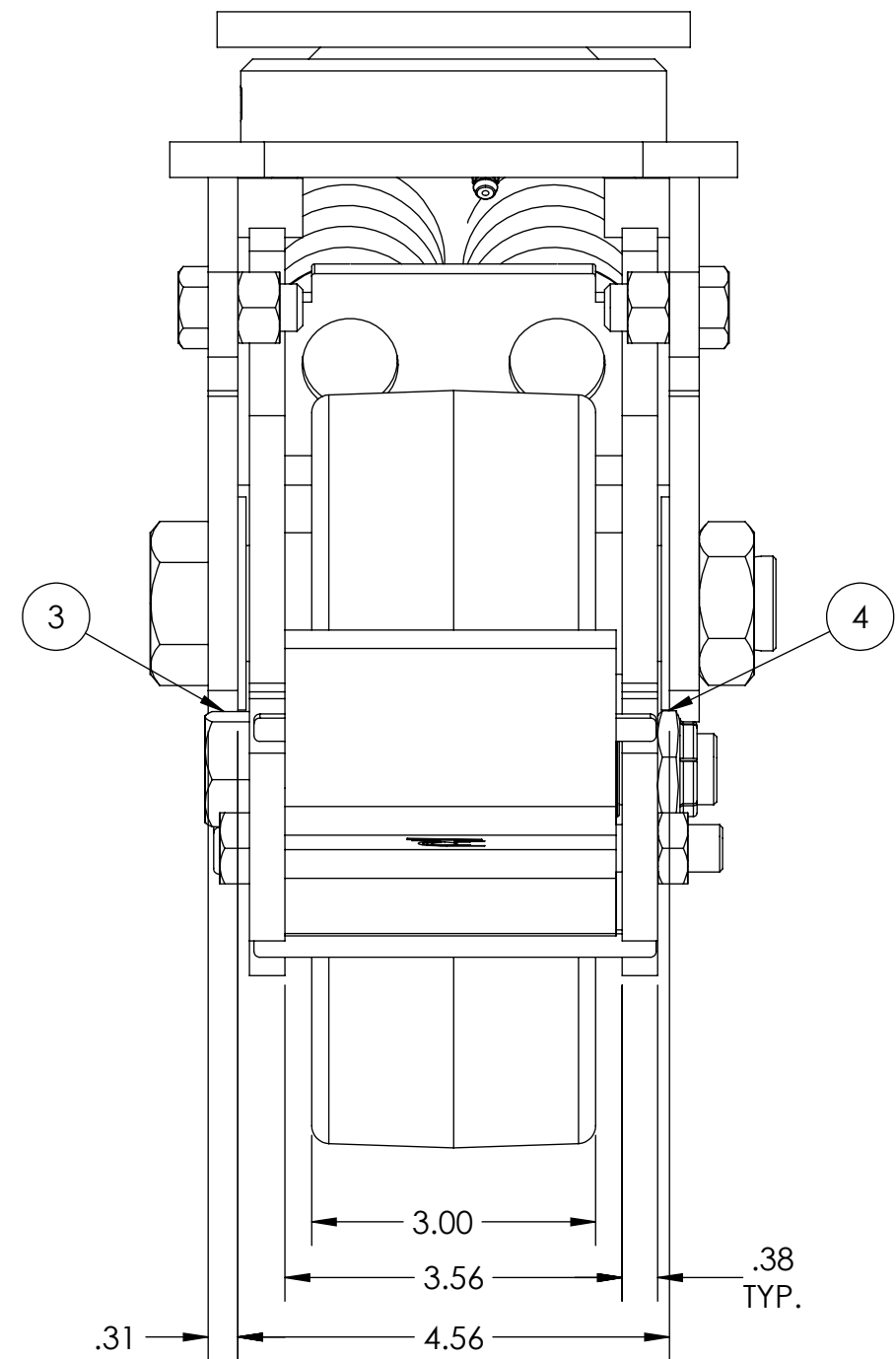
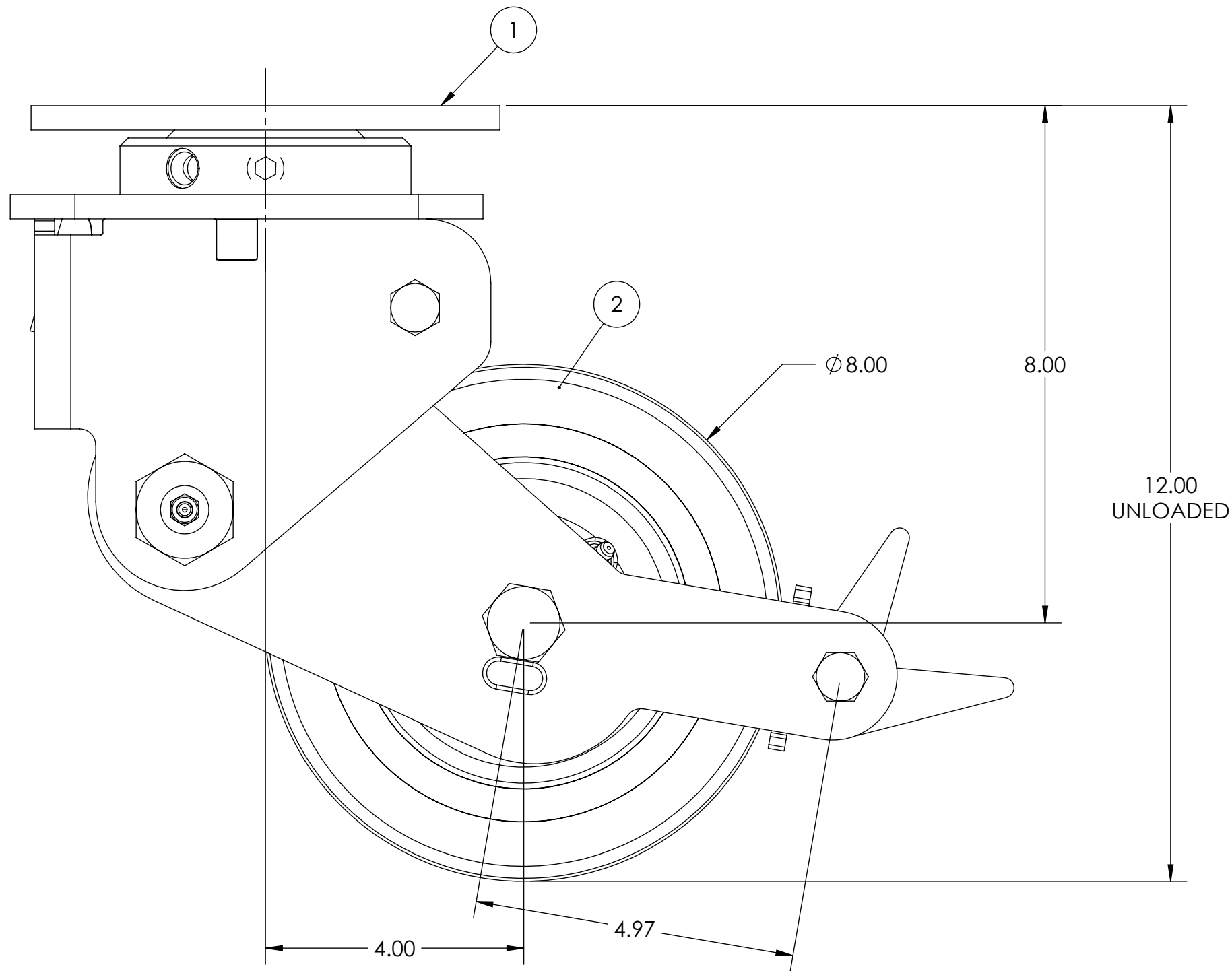
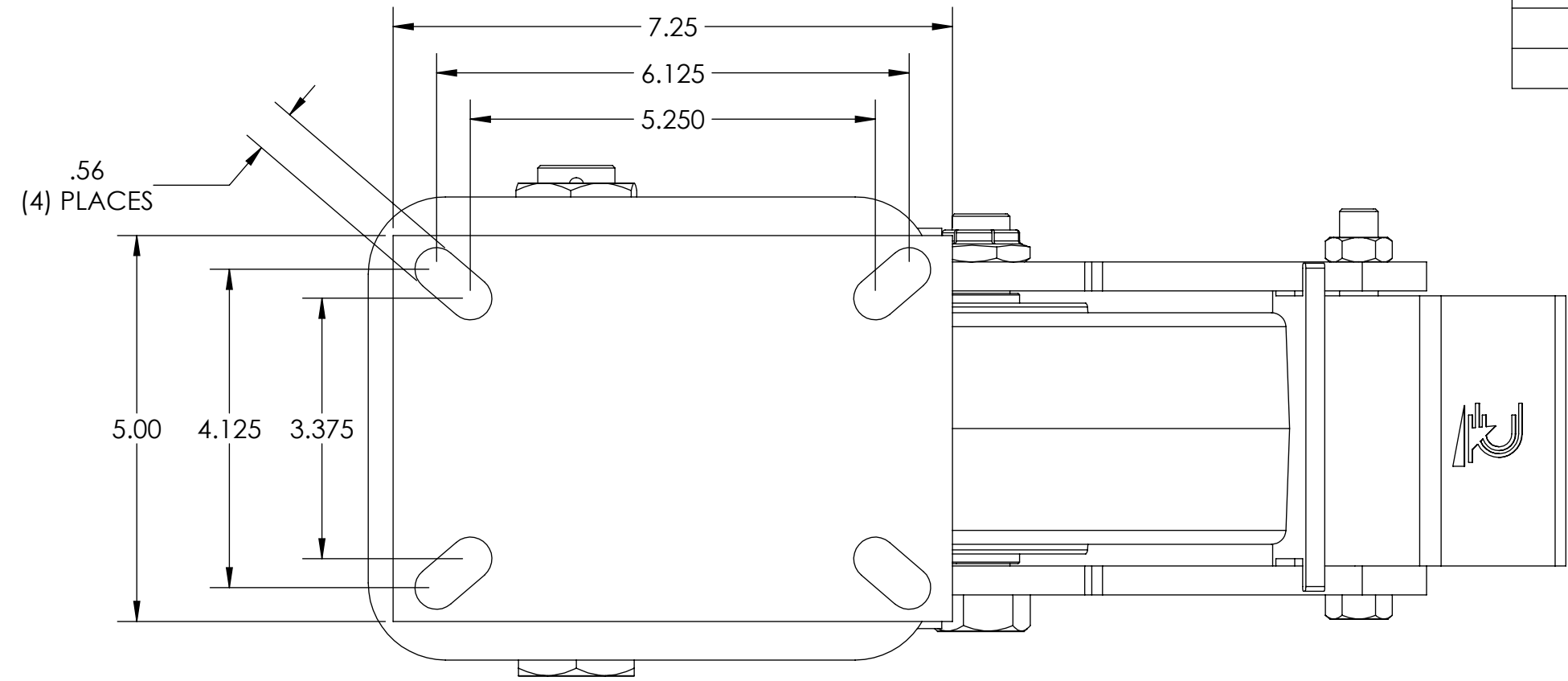





ITEM NO.	QTY.	PART/DRAWING NO.	DESCRIPTION	MATERIAL
1	1	73-08300-00-1P	73 SER. 8.00 X 3.00 SWL. RIG C/W PLB	MISC.
2	1	08309-66-12	Ø8.00 X 3.00 85 SHORE A POLY WHEEL	MISC.
3	1	AX127900C	3/4-10 X 4-15/16 SOLID AXLE ZINC	AISI 1038
4	1	LN12100701	3/4-10 LOW HEIGHT FLEXLOC NUT	STEEL



<div><div></div><div>CASTER CONCEPTS, INC.</div></div> <div>16000 E. MICHIGAN AVE. ALBION, MI 49224 (517)629-8838 casterconcepts.com</div>		TOLERANCE SPECS.	UNLESS OTHERWISE SPECIFIED THE FOLLOWING TOLERANCES APPLY: .XX = ±.030    .XXX = ±.010    X° = ±1.0° PART TO BE FREE OF BURRS AND SHARP EDGES				DESCRIPTION:		73 SER. 8.00 X 3.00 SPRING LOADED SWL. CASTER C/W PLB					
							PART/DRAWING NO:		73-08309-66-1P		DATE:		6/18/2018	
WHERE USED:		FINISH SPECS.	ZINC PLATING ON RIG, GRAY PAINT ON WHEEL CORE							SCALE:		1:2	C-SIZE	
CHECKED BY:	NEKIBUR R.	MATERIAL SPECS.		APPROVED BY:				DRAWN BY		PRAVEEN K.		THIRD ANGLE		

NOTICE:THIS DRAWING AND DESIGN INFORMATION CONTAINED HEREIN SHALL REMAIN THE SOLE PROPERTY OF CASTER CONCEPTS INC. IT IS SUBMITTED FOR USE IN REFERENCE ONLY AND SHALL NOT BE DUPLICATED OR GIVEN TO A THIRD PARTY WITHOUT THE WRITTEN CONSENT OF CASTER CONCEPTS INC. THIS DRAWING MUST BE RETURNED TO CASTER CONCEPTS INC. UPON REQUEST AT ANY TIME. ACCEPTANCE OF THIS DRAWING SHALL BE CONSTRUED AS AN AGREEMENT OF THESE TERMS.