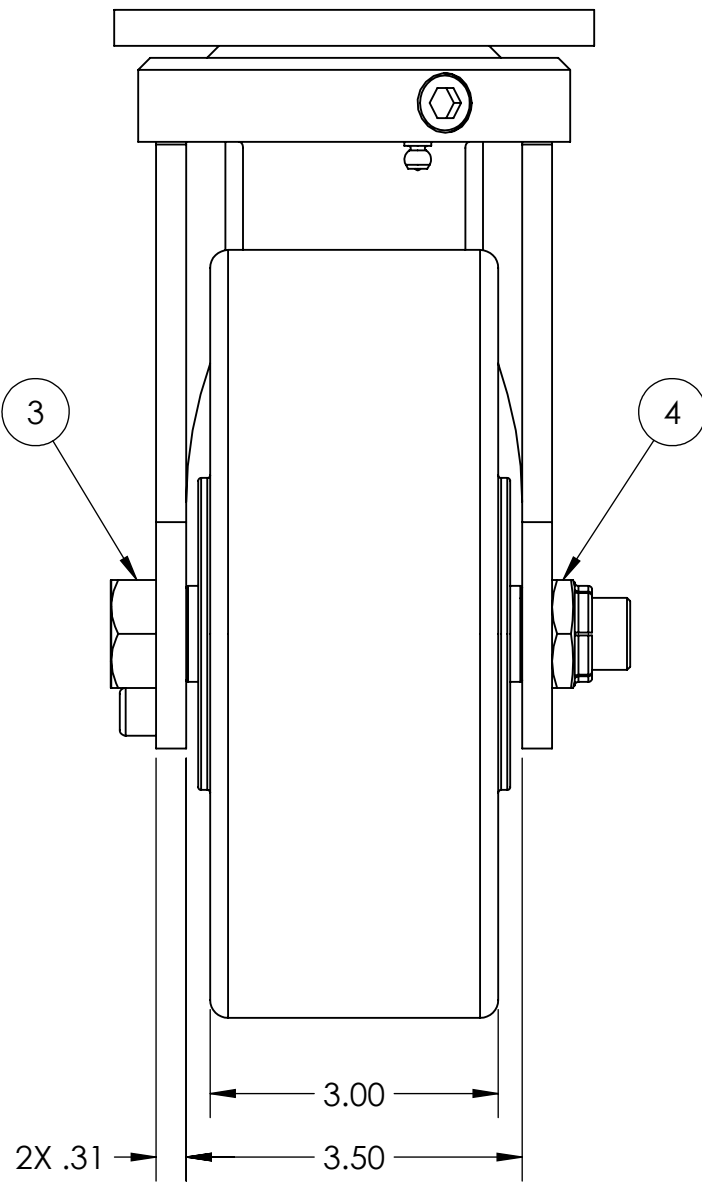
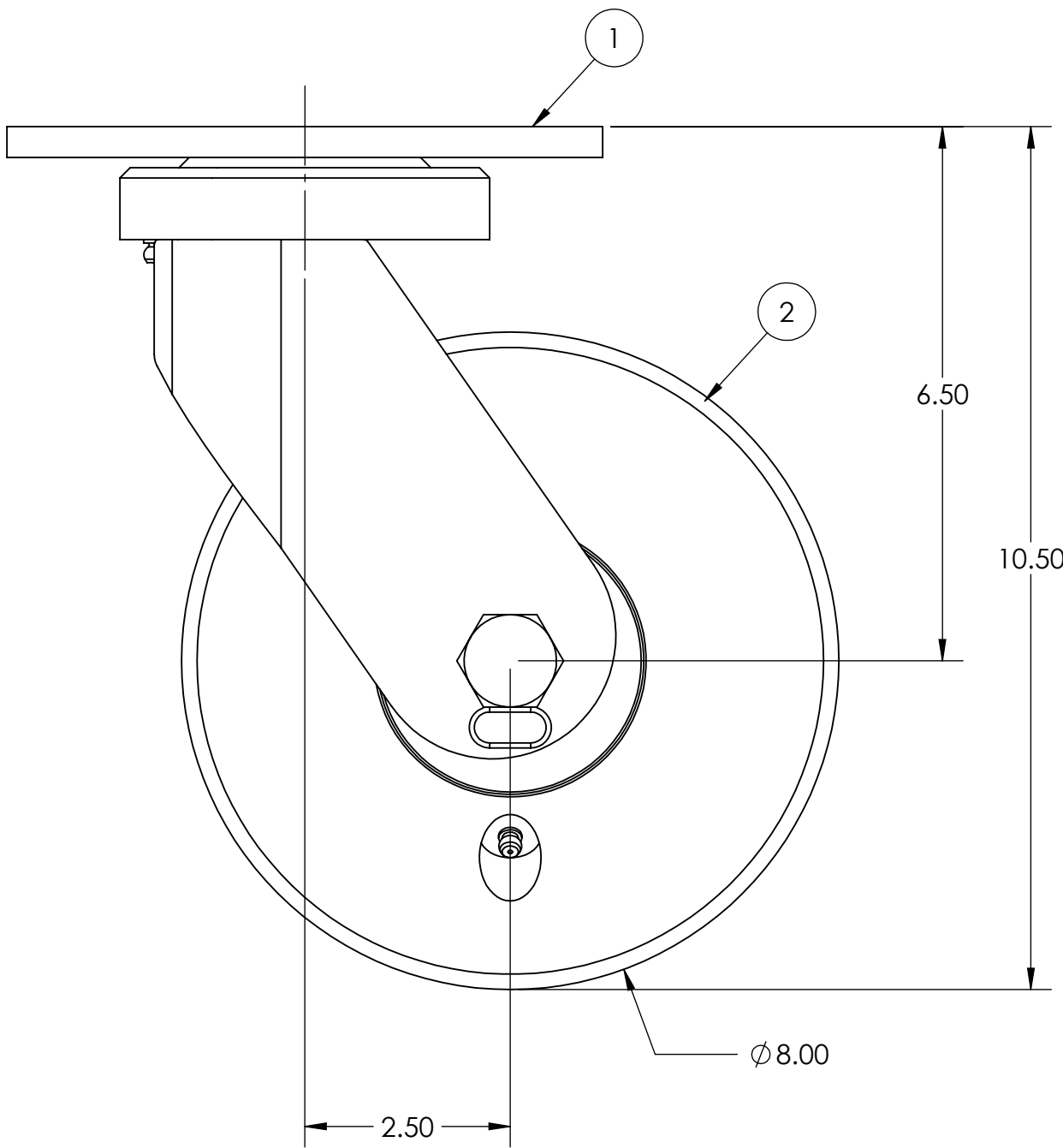




ITEM NO.	QTY.	PART/DRAWING NO.	DESCRIPTION	MATERIAL
1	1	71-08300-00-1	71 SER. 8.00 X 3.00 SWL RIG	STEEL
2	1	08309-39-12	Ø8.00 X 3.00 NYLATRON WHEEL	MISC.
3	1	AX127900C	3/4-10 X 4-15/16 SOLID AXLE ZINC	AISI 1038
4	1	LN12100701	3/4-10 LOW HEIGHT FLEXLOC NUT	STEEL

NOTES:
1. CASTER IS RATED FOR 4,500 LBS AT WALKING SPEEDS, INTERMITTENT USE.



<div></div> <div>CASTER CONCEPTS, INC. 16000 E. MICHIGAN AVE. ALBION, MI 49224 (517) 629-8838 casterconcepts.com</div>		TOLERANCE SPECS.	UNLESS OTHERWISE SPECIFIED THE FOLLOWING TOLERANCES APPLY: .XX = ±.030 .XXX = ±.010 X° = ±1.0° PART TO BE FREE OF BURRS AND SHARP EDGES			DESCRIPTION:		71 SER. 8.00 X 3.00 SWL. CASTER					
						PART/DRAWING NO:		71-08309-39-1		DATE:		1/9/2025	
WHERE USED:		FINISH SPECS.	ZINC PLATING ON RIG						SCALE:		1:2	C-SIZE	
CHECKED BY:	PRAVEEN K.	MATERIAL SPECS.		APPROVED BY:				DRAWN BY		FIELD C FINCH		THIRD ANGLE	<div></div>

NOTICE:THIS DRAWING AND DESIGN INFORMATION CONTAINED HEREIN SHALL REMAIN THE SOLE PROPERTY OF CASTER CONCEPTS INC. IT IS SUBMITTED FOR USE IN REFERENCE ONLY AND SHALL NOT BE DUPLICATED OR GIVEN TO A THIRD PARTY WITHOUT THE WRITTEN CONSENT OF CASTER CONCEPTS INC. THIS DRAWING MUST BE RETURNED TO CASTER CONCEPTS INC. UPON REQUEST AT ANY TIME. ACCEPTANCE OF THIS DRAWING SHALL BE CONSTRUED AS AN AGREEMENT OF THESE TERMS.