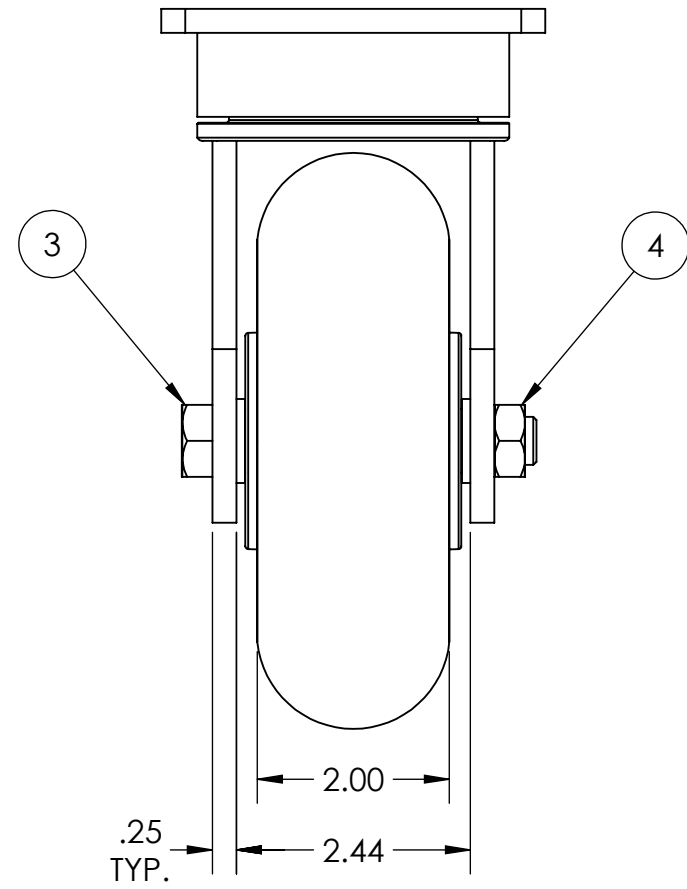
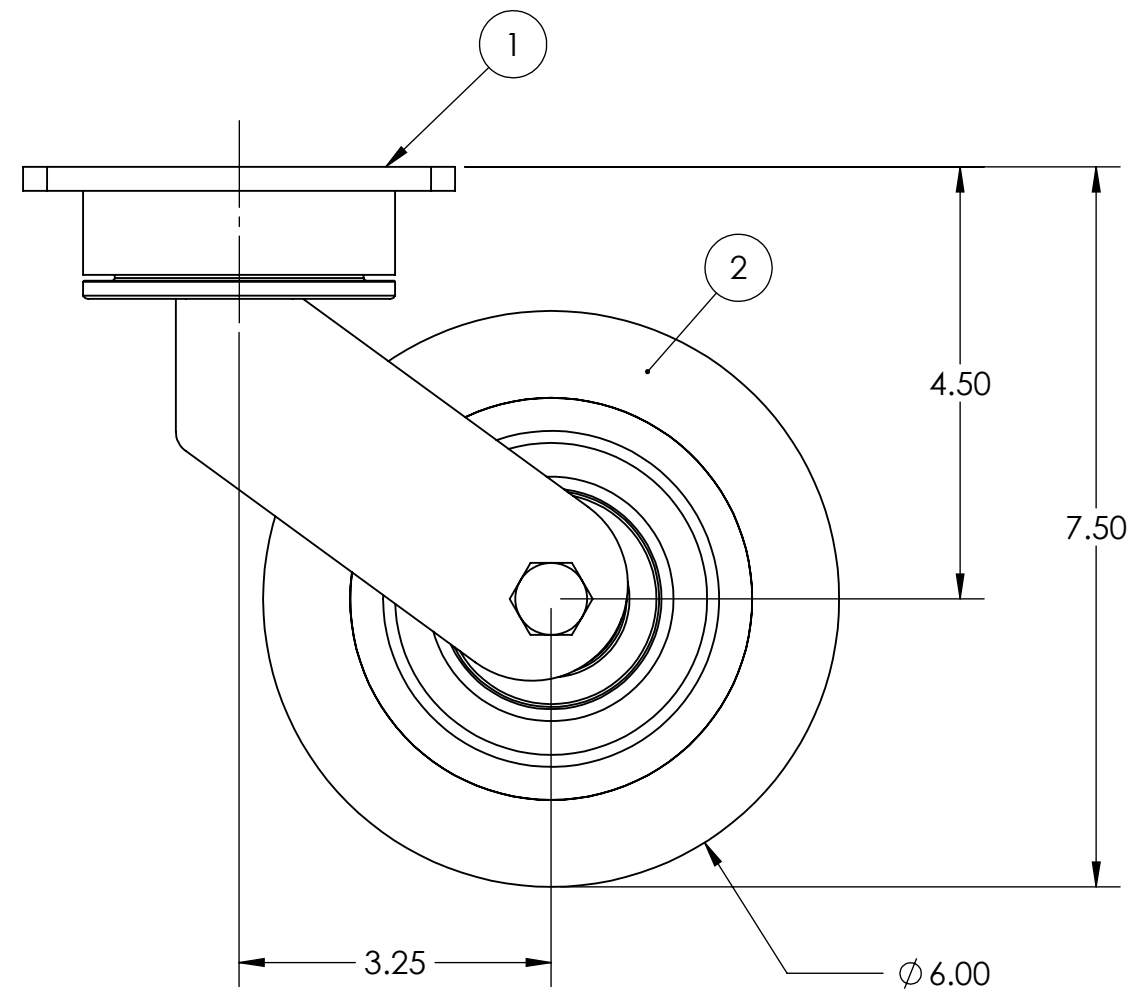

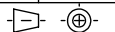


ITEM NO.	QTY.	PART/DRAWING NO.	DESCRIPTION	MATERIAL
1	1	55EXT-06200-00-1OT30	55 SER 6.00 X 2.00 EXT. LEAD SWL. RIG C/W OT30	MISC.
2	1	06202-43-08	Ø6.00 X 2.00 ET-85 BALLOON TREAD POLY WHEEL	MISC.
3	1	AX085400	1/2-20 X 3-3/8 SOLID AXLE ZINC	AISI 1038
4	1	LN08200	1/2-20 TOP LOCK NUT	AISI 1038



 CASTER CONCEPTS, INC. 16000 E. MICHIGAN AVE. ALBION, MI 49224 (517) 629-8838 casterconcepts.com		TOLERANCE SPECS. UNLESS OTHERWISE SPECIFIED THE FOLLOWING TOLERANCES APPLY: .XX = ±.030 .XXX = ±.010 X° = ±1.0° PART TO BE FREE OF BURRS AND SHARP EDGES	DESCRIPTION: 55 SER. EXT. LEAD 6.00 X 2.00 SWL CASTER C/W OT30		DATE: 1/16/2023	
WHERE USED:			PART / DRAWING NO:	55EXT-06202-43-1OT30	SCALE:	1:2 B-SIZE
CHECKED BY:	TARUN B.	FINISH SPECS. ZINC PLATING ON RIG	APPROVED BY:		DRAWN BY:	ANSHIKA G.
MATERIAL SPECS.		THIRD ANGLE				

NOTICE: THIS DRAWING AND DESIGN INFORMATION CONTAINED HEREIN SHALL REMAIN THE SOLE PROPERTY OF CASTER CONCEPTS INC. IT IS SUBMITTED FOR USE IN REFERENCE ONLY AND SHALL NOT BE DUPLICATED OR GIVEN TO A THIRD PARTY WITHOUT THE WRITTEN CONSENT OF CASTER CONCEPTS INC. THIS DRAWING MUST BE RETURNED TO CASTER CONCEPTS INC. UPON REQUEST AT ANY TIME. ACCEPTANCE OF THIS DRAWING SHALL BE CONSTRUED AS AN AGREEMENT OF THESE TERMS.