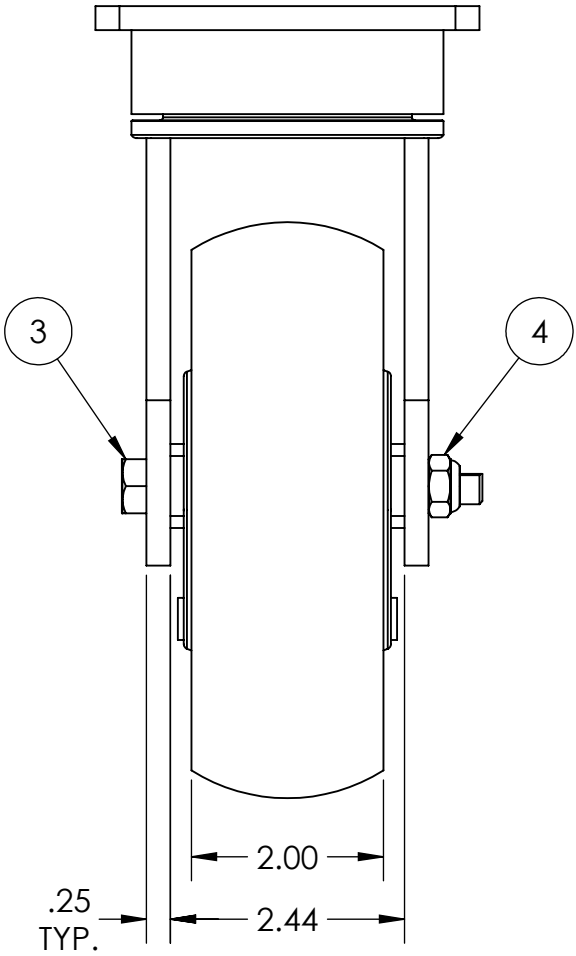
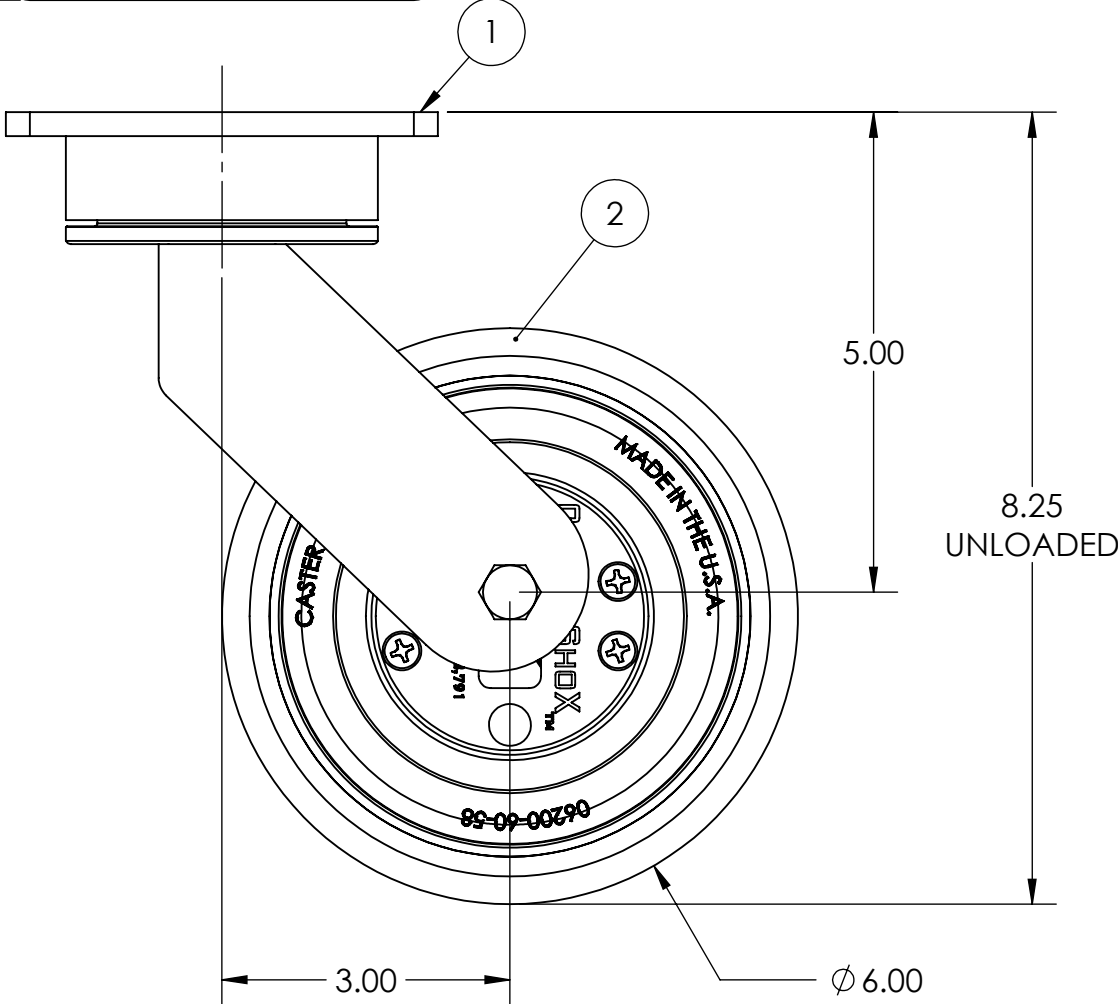




ITEM NO.	QTY.	PART/DRAWING NO.	DESCRIPTION	MATERIAL
1	1	55-06200-00-1XOT30	55 SER. 6.00 X 2.00 CASTERSHOX SWL. RIG C/W OT30	MISC.
2	1	06202-42-06XD8	Ø6.00 X 2.00 CASTERSHOX WHEEL	MISC.
3	1	SPD05053101L	AX065600SP	AISI 1038
4	1	LN061607	3/8-16 NYLOCK NUT	AISI 1038



 <div>CASTER CONCEPTS, INC.</div>	16000 E. MICHIGAN AVE. ALBION, MI 49224 (517) 629-8838 casterconcepts.com	TOLERANCE SPECS.	UNLESS OTHERWISE SPECIFIED THE FOLLOWING TOLERANCES APPLY: .XX = ±.030 .XXX = ±.010 X° = ±1.0° PART TO BE FREE OF BURRS AND SHARP EDGES		DESCRIPTION:		55 SER. 6.00 X 2.00 SWL. CASTERSHOX CASTER C/W OT30			
					PART / DRAWING NO:		55-06202-42-1XD8OT30		DATE:	6/30/2021
WHERE USED:		FINISH SPECS.	ZINC PLATING ON RIG, GRAY PAINT ON WHEEL CORE					SCALE:	1:2	B-SIZE
CHECKED BY:	PRAVEEN K.	MATERIAL SPECS.	APPROVED BY:		DRAWN BY:		TARUN B.		THIRD ANGLE	

NOTICE: THIS DRAWING AND DESIGN INFORMATION CONTAINED HEREIN SHALL REMAIN THE SOLE PROPERTY OF CASTER CONCEPTS INC. IT IS SUBMITTED FOR USE IN REFERENCE ONLY AND SHALL NOT BE DUPLICATED OR GIVEN TO A THIRD PARTY WITHOUT THE WRITTEN CONSENT OF CASTER CONCEPTS INC. THIS DRAWING MUST BE RETURNED TO CASTER CONCEPTS INC. UPON REQUEST AT ANY TIME. ACCEPTANCE OF THIS DRAWING SHALL BE CONSTRUED AS AN AGREEMENT OF THESE TERMS.