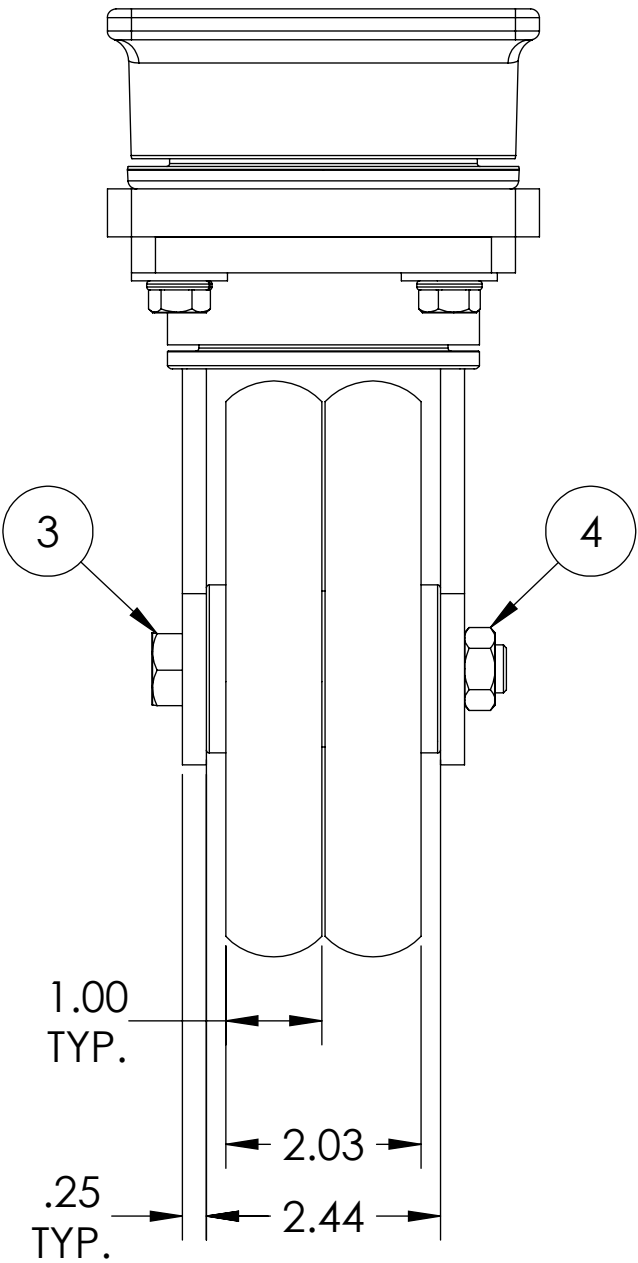
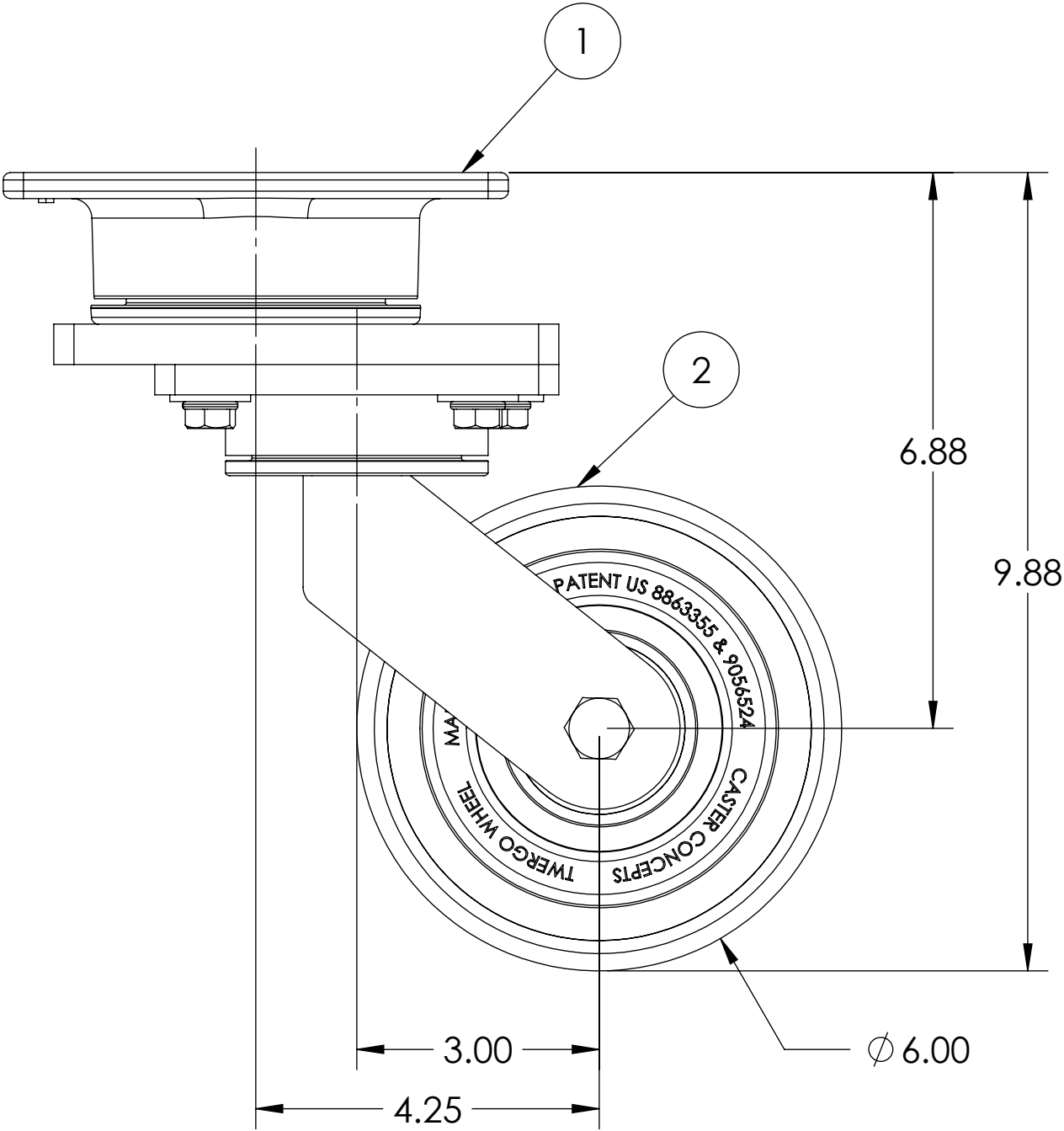
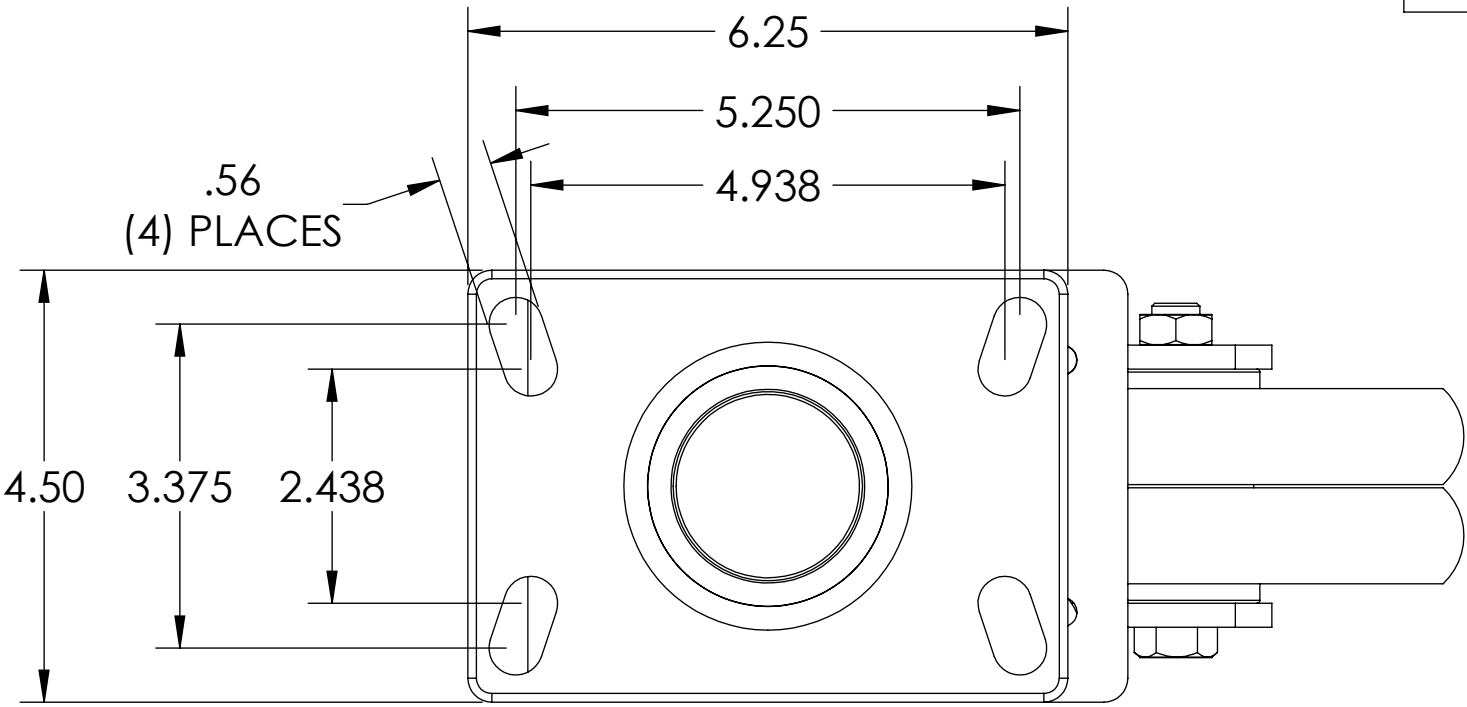
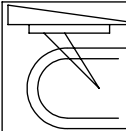
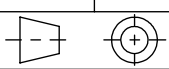


ITEM NO.	QTY.	PART/DRAWING NO.	DESCRIPTION	MATERIAL
1	1	112-06200-00-1	112 SER. 6.00 X 2.00 DUAL SWL. RIG	MISC.
2	1	06202-44-08	Ø6.00 X 2.00 ET85 TWERGO WHEEL	MISC.
3	1	AX085400	1/2-20 X 3-3/8 SOLID AXLE ZINC	AISI 1038
4	1	LN08200	1/2-20 TOP LOCK NUT	AISI 1038



 CASTER CONCEPTS, INC. 16000 E. MICHIGAN AVE. ALBION, MI 49224 (517) 629-8838 casterconcepts.com		TOLERANCE SPECS.	UNLESS OTHERWISE SPECIFIED THE FOLLOWING TOLERANCES APPLY: .XX = ±.030 .XXX = ±.010 X° = ±1.0° PART TO BE FREE OF BURRS AND SHARP EDGES		DESCRIPTION:	112 SER 6.00 X 2.00 DUAL SWL. CASTER			
					PART/DRAWING NO:	112-06202-44-1	DATE:	8/9/2016	
WHERE USED:		FINISH SPECS.	ZINC PLATING ON RIG				SCALE:	1:2	C-SIZE
CHECKED BY:	NEKIBUR R.	MATERIAL SPECS.		APPROVED BY:		DRAWN BY	PRAVEEN K.	THIRD ANGLE	

NOTICE:THIS DRAWING AND DESIGN INFORMATION CONTAINED HEREIN SHALL REMAIN THE SOLE PROPERTY OF CASTER CONCEPTS INC. IT IS SUBMITTED FOR USE IN REFERENCE ONLY AND SHALL NOT BE DUPLICATED OR GIVEN TO A THIRD PARTY WITHOUT THE WRITTEN CONSENT OF CASTER CONCEPTS INC. THIS DRAWING MUST BE RETURNED TO CASTER CONCEPTS INC. UPON REQUEST AT ANY TIME. ACCEPTANCE OF THIS DRAWING SHALL BE CONSTRUED AS AN AGREEMENT OF THESE TERMS.