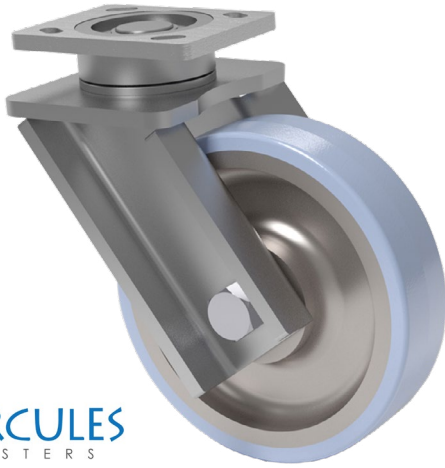
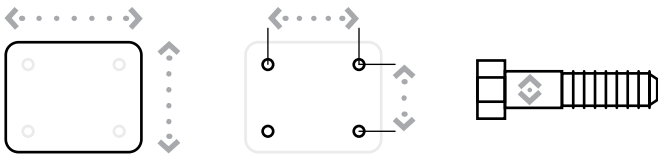


# KINGPINLESS STYLE HERCULES



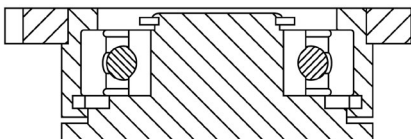
MAXIMUM CAPACITY

# 1,500 lbs.

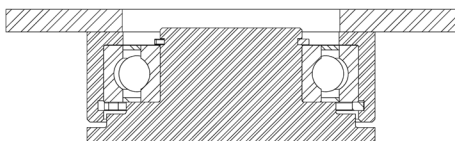


Top Plate Size	Bolt Hole Spacing	Bolt Diameter
55 Series Standard: 4" x 5"	2.625" x 3.625" Slotted to 3" x 3"	0.375"
57 Series Standard: 4.5" x 6.25"	2.438" x 4.938" Slotted to 3.375" x 5.25"	0.5"
Optional Top Plate 70: 5" x 7.25"	3.375" x 5.25" Slotted to 4.125" x 6.125"	0.5"

55 SERIES TOP PLATE



57 SERIES TOP PLATE



## FEATURES

- Swivel Section:** Sealed precision ball bearing with hardened raceways and neoprene seals.
- Legs:** 3/8" x 3-1/4" steel, formed with C-channel design, and continuously welded on the inside and outside to the yoke base. Rigid caster legs are not formed and have angle iron for reinforcement.
- Kingpin:** Kingpinless style design.
- Axle:** 3/4" diameter.
- Lubrication:** Sealed ball bearing is lubricated and requires zero maintenance.
- Wheels:** 6" to 10" diameter wheels are available with sealed precision ball bearings.
- Finish:** Clear zinc plating.

## APPLICATIONS

Excellent for abusive applications where side loading is currently causing issues with bent casters. Automotive plants, line side delivery carts, any heavy-duty manufacturing where downtime and maintenance costs are issues. Maintenance-free swivel section prolongs life of caster with improved ergonomics.

## BENEFITS

Hercules casters are maintenance free with their sealed precision ball bearing in the swivel section and in the wheels. The smooth rotating action and extended lead help lower ergonomic forces. The legs are reinforced to protect against severe side loading for fork lifts and track channels. Prolonged life in extremely abusive applications reduces downtime and maintenance costs.

## OPTIONS

### SWIVEL LOCKS

Factory Installed: ..... L  
Demountable: ..... DL

\* For wheels with a diameter > 6"

# KINGPINLESS STYLE HERCULES

## PRECISION BALL BEARING

Diameter	Width	Material	Capacity	OAH	Swivel Radius	Swivel Lead	Part Number	Weight
6	2.00	T/R Polyurethane	960	8.00	5.10	2.00	<a href="#">55XRL-06202-61-1</a>	19.08
6	2.00	HPPT Polyurethane	1,000	8.00	5.10	2.00	<a href="#">55XRL-06202-90-1</a>	19.08
6	2.00	T/R-95 Polyurethane	1,000	8.00	5.10	2.00	<a href="#">55XRL-06202-91-1</a>	19.08
6	2.00	T/R Polyurethane	960	8.00	5.10	2.00	<a href="#">55XRL-06202-93-1</a>	15.53
6	2.00	T/R-95 Polyurethane	1,000	8.00	5.10	2.00	<a href="#">55XRL-06202-94-1</a>	15.53
6	2.00	ErgoTread	910	8.00	5.10	2.00	<a href="#">55XRL-06202-44-1</a>	15.53
6	2.00	T/R Polyurethane	960	8.50	5.84	2.75	<a href="#">57XRL-06202-61-1</a>	22.15
6	2.00	HPPT Polyurethane	1,500	8.50	5.84	2.75	<a href="#">57XRL-06202-90-1</a>	22.15
6	2.00	T/R-95 Polyurethane	1,400	8.50	5.84	2.75	<a href="#">57XRL-06202-91-1</a>	22.15
6	2.00	ErgoTread	910	8.50	5.84	2.75	<a href="#">57XRL-06202-44-1</a>	18.62
6	2.00	T/R Polyurethane	960	8.50	5.84	2.75	<a href="#">57XRL-06202-93-1</a>	18.62
6	2.00	T/R-95 Polyurethane	1,400	8.50	5.84	2.75	<a href="#">57XRL-06202-94-1</a>	18.62
8	2.00	T/R Polyurethane	1,000	10.13	6.08	2.00	<a href="#">55XRL-08202-61-1</a>	25.92
8	2.00	HPPT Polyurethane	1,000	10.13	6.08	2.00	<a href="#">55XRL-08202-90-1</a>	25.92
8	2.00	T/R-95 Polyurethane	1,000	10.13	6.08	2.00	<a href="#">55XRL-08202-91-1</a>	25.92
8	2.00	T/R Polyurethane	1,000	10.13	6.08	2.00	<a href="#">55XRL-08202-93-1</a>	18.19
8	2.00	T/R-95 Polyurethane	1,000	10.13	6.08	2.00	<a href="#">55XRL-08202-94-1</a>	18.19
8	2.00	ErgoTread	1,000	10.13	6.08	2.00	<a href="#">55XRL-08202-44-1</a>	18.19
8	2.00	T/R Polyurethane	1,240	10.50	6.82	2.75	<a href="#">57XRL-08202-61-1</a>	28.94
8	2.00	HPPT Polyurethane	1,500	10.50	6.82	2.75	<a href="#">57XRL-08202-90-1</a>	28.94
8	2.00	T/R-95 Polyurethane	1,500	10.50	6.82	2.75	<a href="#">57XRL-08202-91-1</a>	28.94
8	2.00	ErgoTread	1,180	10.50	6.82	2.75	<a href="#">57XRL-08202-44-1</a>	21.21
8	2.00	T/R Polyurethane	1,240	10.50	6.82	2.75	<a href="#">57XRL-08202-93-1</a>	21.21
8	2.00	T/R-95 Polyurethane	1,500	10.50	6.82	2.75	<a href="#">57XRL-08202-94-1</a>	21.21
10	2.00	T/R Polyurethane	1,000	12.00	7.07	2.00	<a href="#">55XRL-10202-93-1</a>	20.47
10	2.00	T/R-95 Polyurethane	1,000	12.00	7.07	2.00	<a href="#">55XRL-10202-94-1</a>	20.47
10	2.00	ErgoTread	1,000	12.00	7.07	2.00	<a href="#">55XRL-10202-44-1</a>	20.47
10	2.00	T/R Polyurethane	1,500	12.50	8.06	3.00	<a href="#">57XRL-10202-93-1</a>	23.68
10	2.00	T/R-95 Polyurethane	1,500	12.50	8.06	3.00	<a href="#">57XRL-10202-94-1</a>	23.68
10	2.00	ErgoTread	1,500	12.50	8.06	3.00	<a href="#">57XRL-10202-44-1</a>	23.68

Capacity listed is for manual operation. For powered operations, consult factory.

Part Numbers listed are for the swivel caster. For rigid casters, change series to 50XRL and change the last digit from 1 to 2 (i.e. 50XRL-08202-61-2).

Estimated weight is for swivel caster. Deduct 20 percent of swivel caster weight for rigid casters.

All dimensions are in inches. All weights are in pounds.