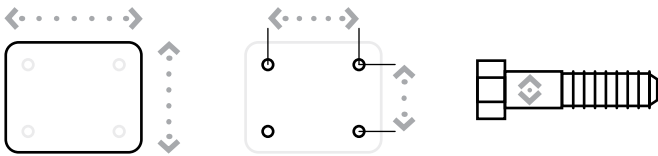


EXTRA HEAVY DUTY 95 SERIES



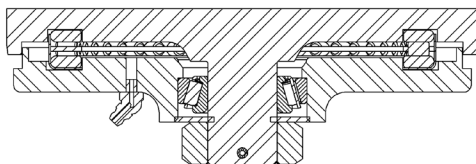
MAXIMUM CAPACITY

17,000 lbs.



Top Plate Size	Bolt Hole Spacing	Bolt Diameter
Standard: 8.5" x 8.5"	7" x 7"	0.625"

95 SERIES TOP PLATE



FEATURES

Swivel Section: Constructed of hot forged C-1045 steel with a 7" diameter raceway featuring precision tapered load and tapered thrust bearings.

Legs: 1/2" x 4" legs formed and continuously welded both inside and outside for greater strength.

Kingpin: 1-1/4" integrally forged kingpin with slotted adjusting nut.

Axle: 1-1/4" diameter axle.

Lubrication: Pre-lubricated before shipping.

Wheels: 6" to 18" diameter wheels.

Finish: Gold Powder Coat.

APPLICATIONS

Rugged applications include die carts, towed trailers, automotive plant equipment, aircraft maintenance stands, production line delivery trailers, paving machinery and boat dollies.

BENEFITS

The 95 Series is ideal for applications where high load capacities are required and where the caster will ensure constant use under load.

The integrally forged kingpin and slotted adjusting nut add strength and longevity to the life of the swivel section.

OPTIONS

BRAKES

Poly Lock:	P*
Wrap Around:	W*
Face Contact:	F

SWIVEL LOCKS

Factory Installed:	L
Demountable:	DL
Heavy Duty:	HDL
Heavy Duty Demountable:	DHDL
Foot Actuated:	KL

SEALED SWIVEL SECTION SSW

SEALED WHEELS..... SW

TOE GUARD..... TG

* For wheels with a diameter > 6"
DUAL WHEEL DESIGN AVAILABLE

EXTRA HEAVY DUTY 95 SERIES

STRAIGHT ROLLER BEARING

Diameter	Width	Material	Capacity	OAH	Swivel Radius	Swivel Lead	Part Number	Weight
6	3.00	Forged Steel	6,000	9.00	5.46	2.25	95-06301-20-1	60.00
6	4.00	H.D. Standard Polyurethane	3,000	9.00	5.62	2.25	95-06401-65-1	50.00
8	3.00	H.D. Standard Polyurethane	3,100	11.00	6.43	2.25	95-08301-65-1	50.00
8	4.00	Forged Steel	8,400	11.00	6.56	2.25	95-08401-20-1	73.00
8	4.00	Standard Polyurethane	3,800	11.00	6.56	2.25	95-08401-60-1	63.00
10	3.00	Cast Iron	4,000	13.00	7.65	2.50	95-10301-11-1	61.00
10	4.00	H.D. Forged Steel	6,000	13.00	7.65	2.50	95-10301-21-1	62.00
10	4.00	Forged Steel	8,400	13.00	7.76	2.50	95-10401-20-1	83.00
10	4.00	Standard Polyurethane	4,200	13.00	7.76	2.50	95-10401-60-1	59.00
10	4.00	H.D. Standard Polyurethane	5,000	13.00	7.76	2.50	95-10401-65-1	68.00
10	4.00	Mold On Rubber	1,500	13.00	7.76	2.50	95-10401-70-1	66.00
10	5.00	H.D. Standard Polyurethane	6,000	13.00	7.91	2.50	95-10501-65-1	68.00
12	3.00	H.D. Standard Polyurethane	3,850	15.50	8.68	2.50	95-12301-65-1	57.00
12	3.50	Laminated Phenolic	4,700	15.50	8.68	2.50	95-12351-35-1	59.00
12	3.50	Phenolic Resin	4,000	15.50	8.68	2.50	95-12351-30-1	60.00
12	3.50	Mold On Rubber	1,350	15.50	8.68	2.50	95-12351-70-1	63.00
12	4.00	Ductile Iron	7,500	15.50	8.73	2.50	95-12401-12-1	90.00
12	4.00	H.D. Standard Polyurethane	5,500	15.50	8.73	2.50	95-12401-65-1	75.00
12	4.00	H.D. T/R Polyurethane	4,400	15.50	8.73	2.50	95-12401-66-1	75.00
12	4.00	H.D. Hard Polyurethane (70D)	6,600	15.50	8.73	2.50	95-12401-67-1	75.00
12	4.00	Mold On Rubber	1,600	15.50	8.73	2.50	95-12401-70-1	71.00
12	5.00	Ductile Iron	10,000	15.50	8.86	2.50	95-12501-12-1	130.00
12	5.00	H.D. Standard Polyurethane	6,250	15.50	8.86	2.50	95-12501-65-1	90.00
12	5.00	H.D. Hard Polyurethane (70D)	7,500	15.50	8.86	2.50	95-12501-67-1	90.00
12	5.00	Mold On Rubber	1,850	15.50	8.86	2.50	95-12501-70-1	88.00
14	5.00	Cast Iron	7,000	17.50	9.82	2.50	95-14501-10-1	100.00
16	4.00	Laminated Phenolic	8,400	19.00	11.18	3.00	95-16401-35-1	80.00
16	4.00	Cast Iron	7,500	19.00	11.18	3.00	95-16401-10-1	105.00
16	4.00	H.D. Standard Polyurethane	6,000	19.00	11.18	3.00	95-16401-65-1	109.00
16	4.00	Mold On Rubber	1,450	19.00	11.18	3.00	95-16401-70-1	106.00
16	5.00	H.D. Standard Polyurethane	8,000	19.00	11.28	3.00	95-16501-65-1	115.00
16	5.00	H.D. Hard Polyurethane (70D)	8,000	19.00	11.28	3.00	95-16501-67-1	115.00
18	5.00	H.D. Standard Polyurethane	8,000	21.00	13.24	4.00	95-18501-65-1	120.00
18	5.00	H.D. Hard Polyurethane (70D)	8,000	21.00	13.24	4.00	95-18501-67-1	120.00

Capacity listed is for manual operation. For powered operations, consult factory.

Part Numbers listed are for the swivel casters.

For rigid casters, change series to 90 and change the last digit from 1 to 2 (i.e. 90-16509-67-2)

Estimated weight is for swivel caster. Deduct 20 pounds for rigid casters.

All dimensions are in inches. All weights are in pounds.

CONTINUED

EXTRA HEAVY DUTY 95 SERIES

PRECISION TAPERED BEARING

Diameter	Width	Material	Capacity	OAH	Swivel Radius	Swivel Lead	Part Number	Weight
6	3.00	Forged Steel	10,000	9.00	5.46	2.25	95-06309-20-1	60.00
6	3.00	H.D. Forged Steel	17,000	9.00	5.46	2.25	95-06309-21-1	60.00
6	3.00	Standard Polyurethane	2,500	9.00	5.46	2.25	95-06309-60-1	50.00
6	4.00	H.D. Standard Polyurethane	3,000	9.00	5.62	2.25	95-06409-65-1	50.00
8	3.00	H.D. Standard Polyurethane	3,100	11.00	6.43	2.25	95-08309-65-1	50.00
8	4.00	Forged Steel	10,000	11.00	6.56	2.25	95-08409-20-1	73.00
8	4.00	H.D. Forged Steel	17,000	11.00	6.56	2.25	95-08409-21-1	73.00
8	4.00	Standard Polyurethane	3,800	11.00	6.56	2.25	95-08409-60-1	63.00
10	3.00	Cast Iron	4,000	13.00	7.65	2.50	95-10309-11-1	61.00
10	4.00	H.D. Forged Steel	6,000	13.00	7.65	2.50	95-10309-21-1	62.00
10	4.00	Polyurethane	3,000	13.00	7.65	2.50	95-10309-60-1	51.00
10	4.00	H.D. Forged Steel	17,000	13.00	7.76	2.50	95-10309-21-1	83.00
10	4.00	Forged Steel	10,000	13.00	7.76	2.50	95-10409-20-1	83.00
10	4.00	Standard Polyurethane	4,200	13.00	7.76	2.50	95-10409-60-1	59.00
10	4.00	H.D. Standard Polyurethane	5,000	13.00	7.76	2.50	95-10409-65-1	68.00
10	4.00	Mold On Rubber	1,500	13.00	7.76	2.50	95-10409-70-1	66.00
10	5.00	H.D. Standard Polyurethane	6,000	13.00	7.91	2.50	95-10509-65-1	68.00
12	3.00	H.D. Standard Polyurethane	3,850	15.50	8.68	2.50	95-12309-65-1	57.00
12	3.50	Laminated Phenolic	4,700	15.50	8.68	2.50	95-12359-35-1	59.00
12	3.50	Phenolic Resin	4,000	15.50	8.68	2.50	95-12359-30-1	60.00
12	3.50	Mold On Rubber	1,350	15.50	8.68	2.50	95-12359-70-1	63.00
12	4.00	Ductile Iron	7,500	15.50	8.73	2.50	95-12409-12-1	90.00
12	4.00	H.D. Standard Polyurethane	5,500	15.50	8.73	2.50	95-12409-65-1	75.00
12	4.00	H.D. T/R Polyurethane	4,400	15.50	8.73	2.50	95-12409-66-1	75.00
12	4.00	H.D. Hard Polyurethane (70D)	6,600	15.50	8.73	2.50	95-12409-67-1	75.00
12	4.00	Mold On Rubber	1,600	15.50	8.73	2.50	95-12409-70-1	71.00
12	5.00	Ductile Iron	15,000	15.50	8.86	2.50	95-12509-12-1	130.00
12	5.00	H.D. Standard Polyurethane	6,250	15.50	8.86	2.50	95-12509-65-1	90.00
12	5.00	H.D. Hard Polyurethane (70D)	7,500	15.50	8.86	2.50	95-12509-67-1	90.00
12	5.00	Mold On Rubber	1,850	15.50	8.86	2.50	95-12509-70-1	88.00
14	5.00	Cast Iron	7,000	17.50	9.82	2.50	95-14509-10-1	100.00

CONTINUED

EXTRA HEAVY DUTY 95 SERIES

PRECISION TAPERED BEARING

Diameter	Width	Material	Capacity	OAH	Swivel Radius	Swivel Lead	Part Number	Weight
16	4.00	Laminated Phenolic	8,400	19.00	11.18	3.00	95-16409-35-1	80.00
16	4.00	Cast Iron	7,500	19.00	11.18	3.00	95-16409-10-1	105.00
16	4.00	H.D. Standard Polyurethane	6,000	19.00	11.18	3.00	95-16409-65-1	109.00
16	4.00	Mold On Rubber	1,450	19.00	11.18	3.00	95-16409-70-1	106.00
16	5.00	H.D. Standard Polyurethane	8,000	19.00	11.28	3.00	95-16509-65-1	115.00
16	5.00	H.D. Hard Polyurethane (70D)	8,000	19.00	11.28	3.00	95-16509-67-1	115.00
18	5.00	H.D. Standard Polyurethane	8,000	21.00	13.24	4.00	95-18509-65-1	120.00
18	5.00	H.D. Hard Polyurethane (70D)	9,000	21.00	13.24	4.00	95-18509-67-1	120.00

Capacity listed is for manual operation. For powered operations, consult factory.

Part Numbers listed are for the swivel casters. For rigid casters, change series to 90 and change the last digit from 1 to 2 (i.e. 90-16509-67-2)

Estimated weight is for swivel caster. Deduct 20 pounds for rigid casters.

All dimensions are in inches. All weights are in pounds.