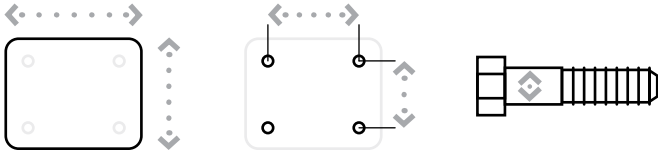


KINGPINLESS STYLE 91 SERIES



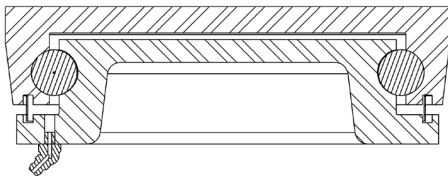
MAXIMUM CAPACITY

20,000 lbs.



Top Plate Size	Bolt Hole Spacing	Bolt Diameter
Standard: 8.5" x 8.5"	7" x 7"	0.625"

91 SERIES TOP PLATE



FEATURES

Swivel Section: Constructed of hot forged C-1045 steel, the single ball race design features 7/8" diameter load/thrust ball bearings in a 7" diameter precision machined load raceway

Legs: 1/2" x 4" legs are formed and continuously welded both inside and outside for greater strength.

Kingpin: Kingpinless style design.

Axle: 1-1/4", Grade 5.

Lubrication: Pre-lubricated before shipping.

Wheels: 6" to 18" diameter wheels, 3" to 5" widths.

Finish: Gold Powder Coat.

Standard: Shielded swivel to reduce dust and dirt contamination.

APPLICATIONS

Specifically designed for severe applications, the 91 Series is ideal for die carts, tooling fixtures, aircraft engine stands, ground support equipment, aerospace A-frame skin dollies, portable jigs, large work platforms, mobile military equipment, aircraft maintenance stands and production line delivery trailers.

BENEFITS

The raceways are precision machined and then through hardened to eliminate brinelling of the surface. The 91 Series offers a high strength swivel section that will easily swivel under extreme loads.

OPTIONS

BRAKES

Poly Lock: P*
 Wrap Around: W*
 Face Contact: F

SWIVEL LOCKS

Factory Installed: L
 Heavy Duty: HDL
 Heavy Duty Demountable: DHDL
 Demountable: DL
 Foot Actuated: KL

SEALED SWIVEL SECTION SSW

SEALED WHEELS SW

TOE GUARD TG

* For wheels with a diameter > 6"

Contact the factory for special overall heights and finishes.

DUAL WHEEL DESIGN AVAILABLE

KINGPINLESS STYLE 91 SERIES

STRAIGHT ROLLER BEARING

Diameter	Width	Material	Capacity	OAH	Swivel Radius	Swivel Lead	Part Number	Weight
6	3.00	Forged Steel	6,000	9.50	5.46	2.25	91-06301-20-1	60.00
6	4.00	H.D. Standard Polyurethane	3,000	9.50	5.61	2.25	91-06401-65-1	60.00
8	4.00	Forged Steel	8,400	11.00	6.56	2.25	91-08401-20-1	73.00
8	4.00	Standard Polyurethane	3,800	11.00	6.56	2.25	91-08401-60-1	63.00
10	4.00	Forged Steel	8,400	13.00	7.76	2.50	91-10401-20-1	83.00
10	4.00	Standard Polyurethane	4,200	13.00	7.76	2.50	91-10401-60-1	59.00
10	4.00	H.D. Standard Polyurethane	5,000	13.00	7.76	2.50	91-10401-65-1	68.00
10	4.00	Mold On Rubber	1,500	13.00	7.76	2.50	91-10401-70-1	66.00
10	5.00	H.D. Standard Polyurethane	6,000	13.00	7.91	2.50	91-10501-65-1	68.00
10	5.00	H.D. Hard Polyurethane (70D)	7,200	13.00	7.91	2.50	91-10501-67-1	68.00
12	4.00	Ductile Iron	7,500	15.50	8.73	2.50	91-12401-12-1	90.00
12	4.00	H.D. Standard Polyurethane	5,500	15.50	8.73	2.50	91-12401-65-1	75.00
12	4.00	H.D. Hard Polyurethane (70D)	6,600	15.50	8.73	2.50	91-12401-67-1	75.00
12	4.00	Mold On Rubber	1,600	15.50	8.73	2.50	91-12401-70-1	71.00
12	5.00	Ductile Iron	10,000	15.50	8.86	2.50	91-12501-12-1	135.00
12	5.00	H.D. Standard Polyurethane	6,250	15.50	8.86	2.50	91-12501-65-1	90.00
12	5.00	H.D. Hard Polyurethane (70D)	7,800	15.50	8.86	2.50	91-12501-67-1	90.00
12	5.00	Mold On Rubber	1,850	15.50	8.86	2.50	91-12501-70-1	88.00
14	5.00	Cast Iron	7,000	17.50	10.31	3.00	91-14501-10-1	100.00
16	4.00	Laminated Phenolic	8,400	19.00	11.18	3.00	91-16401-35-1	80.00
16	4.00	H.D. Standard Polyurethane	6,000	19.00	11.18	3.00	91-16401-65-1	109.00
16	4.00	Mold On Rubber	1,450	19.00	11.18	3.00	91-16401-70-1	106.00
16	4.00	Cast Iron	7,500	19.00	11.18	3.00	91-16401-10-1	110.00
16	5.00	H.D. Standard Polyurethane	8,000	19.00	11.28	3.00	91-16501-65-1	115.00
16	5.00	H.D. Hard Polyurethane (70D)	8,000	19.00	11.28	3.00	91-16501-67-1	115.00
18	5.00	H.D. Standard Polyurethane	8,500	21.00	13.24	4.00	91-18501-65-1	125.00
18	5.00	H.D. Hard Polyurethane (70D)	9,000	21.00	13.24	4.00	91-18501-67-1	125.00

Capacity listed is for manual operation. For powered operations, consult factory.

Part Numbers listed are for the swivel casters.

For rigid casters, change series to 90 and change the last digit from 1 to 2 (i.e. 90-16509-67-2)

Estimated weight is for swivel caster. Deduct 15 pounds for rigid casters.

All dimensions are in inches. All weights are in pounds.

FOR TWICE THE LOAD CAPACITY, DUAL WHEELS ARE AVAILABLE. CONSULT THE FACTORY.

CONTINUED

KINGPINLESS STYLE

91 SERIES

PRECISION TAPERED BEARING

Diameter	Width	Material	Capacity	OAH	Swivel Radius	Swivel Lead	Part Number	Weight
6	3.00	Forged Steel	10,000	9.50	5.46	2.25	91-06309-20-1	60.00
6	3.00	H.D. Forged Steel	17,000	9.50	5.46	2.25	91-06309-21-1	60.00
6	4.00	H.D. Standard Polyurethane	3,000	9.50	5.61	2.25	91-06409-65-1	60.00
8	4.00	Forged Steel	10,000	11.00	6.56	2.25	91-08409-20-1	73.00
8	4.00	H.D. Forged Steel	20,000	11.00	6.56	2.25	91-08409-21-1	73.00
8	4.00	Standard Polyurethane	3,800	11.00	6.56	2.25	91-08409-60-1	63.00
10	4.00	Forged Steel	10,000	13.00	7.76	2.50	91-10409-20-1	83.00
10	4.00	H.D. Forged Steel	20,000	13.00	7.76	2.50	91-10409-21-1	83.00
10	4.00	Standard Polyurethane	4,200	13.00	7.76	2.50	91-10409-60-1	59.00
10	4.00	H.D. Standard Polyurethane	5,000	13.00	7.76	2.50	91-10409-65-1	68.00
10	4.00	Mold On Rubber	1,500	13.00	7.76	2.50	91-10409-70-1	66.00
10	5.00	H.D. Standard Polyurethane	6,000	13.00	7.91	2.50	91-10509-65-1	68.00
10	5.00	H.D. Hard Polyurethane (70D)	7,200	13.00	7.91	2.50	91-10509-67-1	68.00
12	4.00	Ductile Iron	7,500	15.50	8.73	2.50	91-12409-12-1	90.00
12	4.00	H.D. Standard Polyurethane	5,500	15.50	8.73	2.50	91-12409-65-1	75.00
12	4.00	H.D. Hard Polyurethane (70D)	6,600	15.50	8.73	2.50	91-12409-67-1	75.00
12	4.00	Mold On Rubber	1,600	15.50	8.73	2.50	91-12409-70-1	71.00
12	5.00	Ductile Iron	15,000	15.50	8.86	2.50	91-12509-12-1	135.00
12	5.00	H.D. Standard Polyurethane	6,250	15.50	8.86	2.50	91-12509-65-1	90.00
12	5.00	H.D. Hard Polyurethane (70D)	7,800	15.50	8.86	2.50	91-12509-67-1	90.00
12	5.00	Mold On Rubber	1,850	15.50	8.86	2.50	91-12509-70-1	88.00
14	5.00	Cast Iron	7,000	17.50	10.31	3.00	91-14509-10-1	100.00
16	4.00	Laminated Phenolic	9,400	19.00	11.18	3.00	91-16409-35-1	80.00
16	4.00	H.D. Standard Polyurethane	6,000	19.00	11.18	3.00	91-16409-65-1	109.00
16	4.00	Mold On Rubber	1,450	19.00	11.18	3.00	91-16409-70-1	106.00
16	4.00	Cast Iron	7,500	19.00	11.18	3.00	91-16409-10-1	110.00
16	5.00	H.D. Standard Polyurethane	8,000	19.00	11.28	3.00	91-16509-65-1	115.00
16	5.00	H.D. Hard Polyurethane (70D)	8,000	19.00	11.28	3.00	91-16509-67-1	115.00
18	5.00	H.D. Standard Polyurethane	8,500	21.00	13.24	4.00	91-18509-65-1	125.00
18	5.00	H.D. Hard Polyurethane (70D)	9,000	21.00	13.24	4.00	91-18509-67-1	125.00

Capacity listed is for manual operation. For powered operations, consult factory.

Part Numbers listed are for the swivel casters. For rigid casters, change series to 90 and change the last digit from 1 to 2 (i.e. 90-16509-67-2)

Estimated weight is for swivel caster. Deduct 15 pounds for rigid casters.

All dimensions are in inches. All weights are in pounds.

FOR TWICE THE LOAD CAPACITY, DUAL WHEELS ARE AVAILABLE. CONSULT THE FACTORY.