

# KINGPINLESS STYLE 51 SERIES



## FEATURES

**Swivel Section:** High alloy swivel section is precision machined to accommodate 3/8" diameter ball bearings. Swivel sections are through hardened for durability.

**Legs:** 1/4" x 2" steel, formed and continuously welded inside and outside to the yoke base.

**Axle:** 1/2" diameter.

**Lubrication:** Pre-lubricated before shipping.

**Wheels:** 4" to 8" diameter wheels are available with straight roller bearings or ball bearings for ease in rolling.

**Finish:** Clear zinc plating.

## APPLICATIONS

Excellent for light powered applications, bakery dough troughs, portable work benches, platform trucks, tow lines, utility carts, tooling fixtures, scrap metal carriers, drywall dollies, gantry cranes, automated guided vehicles, fiberglass lay-up molds, and other applications.

## BENEFITS

The 51 Series kingpinless style swivel bearings act as both load and thrust components to lock the swivel section together and distribute the load over a larger area. The hardened swivel sections and formed and welded legs provide the strength and durability necessary for use in applications where constant swiveling under load is necessary.

## OPTIONS

### BRAKES

Cam: ..... C\*  
 Poly Lock: ..... P\*  
 Wrap Around: ..... W\*<sup>^</sup>  
 Dual Side: ..... DS<sup>^</sup>  
 Single Side: ..... SS<sup>^</sup>  
 Face Contact: ..... F

### SWIVEL LOCKS

Factory Installed: ..... L  
 Demountable: ..... DL  
 Foot Actuated: ..... KL  
 Passive: ..... PL

SEALED SWIVEL SECTION ..... SSW

SEALED WHEELS ..... SW

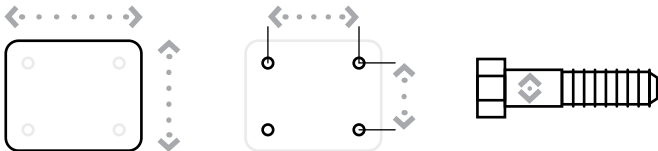
TOE GUARD ..... TG

\* For wheels with a diameter > 6"

<sup>^</sup> Only available on roller bearing wheels.

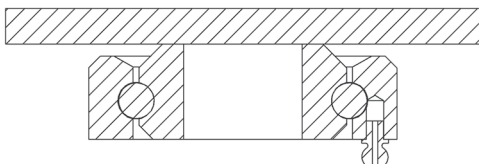
### MAXIMUM CAPACITY

# 1,500 lbs.



Top Plate Size	Bolt Hole Spacing	Bolt Diameter
Standard: 4" x 5"	2.625" x 3.625" Slotted to 3" x 3"	0.375"
Optional Top Plate 60: 4.5" x 6.25"	2.438" x 4.938" Slotted to 3.375" x 5.25"	0.5"
Optional Top Plate 70: 5" x 7.25"	3.375" x 5.25" Slotted to 4.125" x 6.125"	0.5"
Optional Top Plate 75: 6" x 7"	4.62 x 5.5	0.5"

### 51 SERIES TOP PLATE



# KINGPINLESS STYLE 51 SERIES

## STRAIGHT ROLLER BEARING

Diameter	Width	Material	Capacity	OAH	Swivel Radius	Swivel Lead	Part Number	Weight
4	1.50	Forged Steel	1,400	5.62	3.58	1.50	<a href="#">51-04101-20-1</a>	7.25
4	2.00	Phenolic Resin	800	5.62	3.64	1.50	<a href="#">51-04201-30-1</a>	7.50
4	2.00	Cast Iron	1,000	5.62	3.64	1.50	<a href="#">51-04201-10-1</a>	7.50
4	2.00	Standard Polyurethane	700	5.62	3.64	1.50	<a href="#">51-04201-60-1</a>	7.50
4	2.00	H.D. T/R Polyurethane	600	5.62	3.64	1.50	<a href="#">51-04201-66-1</a>	7.50
4	2.00	Mold On Rubber	350	5.62	3.64	1.50	<a href="#">51-04201-70-1</a>	8.20
5	2.00	Forged Steel	1,500	6.50	4.37	1.75	<a href="#">51-05201-20-1</a>	10.20
5	2.00	Cast Iron	1,200	6.50	4.37	1.75	<a href="#">51-05201-10-1</a>	9.20
5	2.00	Phenolic Resin	1,000	6.50	4.37	1.75	<a href="#">51-05201-30-1</a>	8.50
5	2.00	Standard Polyurethane	1,050	6.50	4.37	1.75	<a href="#">51-05201-60-1</a>	10.00
5	2.00	T/R Polyurethane	850	6.50	4.37	1.75	<a href="#">51-05201-61-1</a>	10.00
5	2.00	Mold On Rubber	400	6.50	4.37	1.75	<a href="#">51-05201-70-1</a>	10.00
6	2.00	Forged Steel	1,500	7.50	5.34	2.25	<a href="#">51-06201-20-1</a>	13.50
6	2.00	Cast Iron	1,200	7.50	5.34	2.25	<a href="#">51-06201-10-1</a>	13.00
6	2.00	Phenolic Resin	1,200	7.50	5.34	2.25	<a href="#">51-06201-30-1</a>	9.50
6	2.00	Standard Polyurethane	1,200	7.50	5.34	2.25	<a href="#">51-06201-60-1</a>	12.00
6	2.00	T/R Polyurethane	1,000	7.50	5.34	2.25	<a href="#">51-06201-61-1</a>	12.00
6	2.00	Mold On Rubber	425	7.50	5.34	2.25	<a href="#">51-06201-70-1</a>	12.00
8	2.00	Cast Iron	1,500	10.12	6.33	2.25	<a href="#">51-08201-10-1</a>	16.50
8	2.00	Phenolic Resin	1,400	10.12	6.33	2.25	<a href="#">51-08201-30-1</a>	12.00
8	2.00	Standard Polyurethane	1,500	10.12	6.33	2.25	<a href="#">51-08201-60-1</a>	14.00
8	2.00	T/R Polyurethane	1,200	10.12	6.33	2.25	<a href="#">51-08201-61-1</a>	14.00
8	2.00	Mold On Rubber	500	10.12	6.33	2.25	<a href="#">51-08201-70-1</a>	14.00

## PRECISION BEARING

Diameter	Width	Material	Capacity	OAH	Swivel Radius	Swivel Lead	Part Number	Weight
4	1.50	Forged Steel	1,400	5.62	3.58	1.50	<a href="#">51-04109-20-1†</a>	7.25
4	2.00	Standard Polyurethane	700	5.62	3.64	1.50	<a href="#">51-04204-60-1*</a>	7.50
4	2.00	H.D. T/R Polyurethane	600	5.62	3.64	1.50	<a href="#">51-04202-66-1</a>	7.50
5	2.00	Forged Steel	1,500	6.50	4.37	1.75	<a href="#">51-05209-20-1†</a>	10.20
5	2.00	Standard Polyurethane	1,050	6.50	4.37	1.75	<a href="#">51-05202-60-1</a>	10.00
5	2.00	T/R Polyurethane	850	6.50	4.37	1.75	<a href="#">51-05202-61-1</a>	10.00
6	2.00	Forged Steel	1,500	7.50	5.34	2.25	<a href="#">51-06209-20-1†</a>	13.50
6	2.00	Standard Polyurethane	1,200	7.50	5.34	2.25	<a href="#">51-06202-60-1</a>	12.00
6	2.00	T/R Polyurethane	1,000	7.50	5.34	2.25	<a href="#">51-06202-61-1</a>	12.00
8	2.00	Standard Polyurethane	1,500	10.12	6.33	2.25	<a href="#">51-08202-60-1</a>	14.00
8	2.00	T/R Polyurethane	1,200	10.12	6.33	2.25	<a href="#">51-08202-61-1</a>	14.00

Capacity listed for manual operation. For powered operations consult factory.

Part numbers listed are for the swivel caster. For rigid casters, change series to 50 and change the last digit from 1 to 2 (ie: 50-06201-60-2).

Estimated weight is for the swivel caster, deduct 20% of swivel caster weight for rigid caster.

† This caster has tapered bearings. \* This caster has annular ball bearings.

All dimensions are in inches. All weights are in pounds.