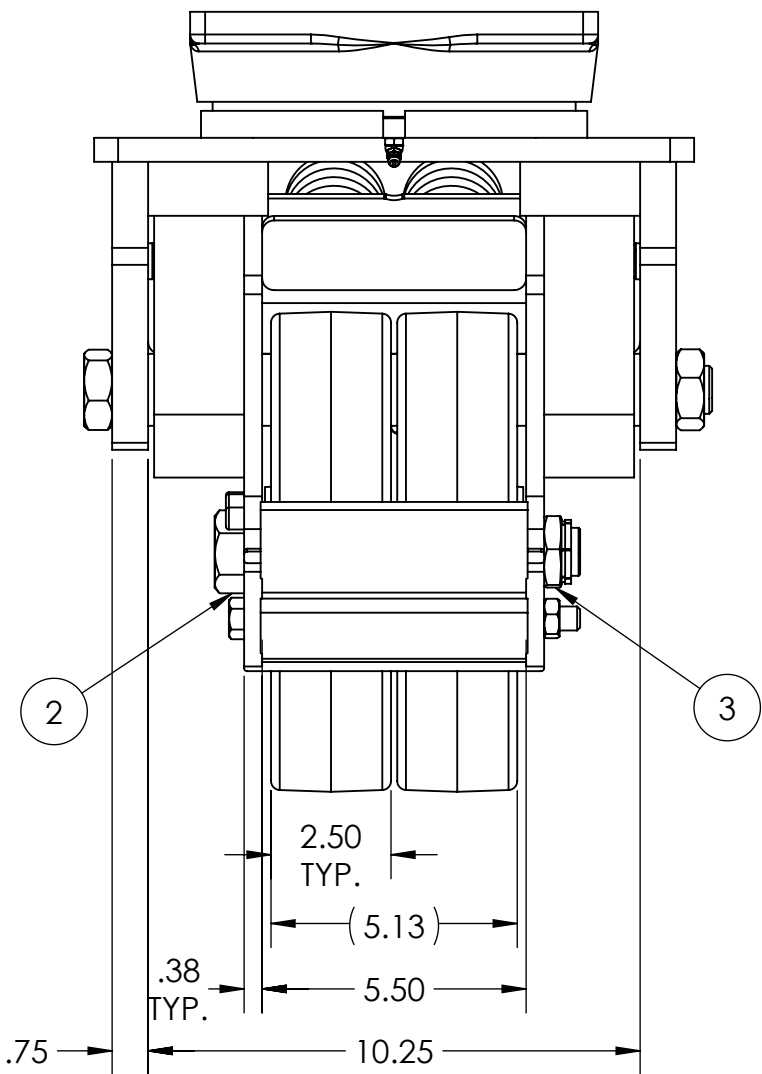
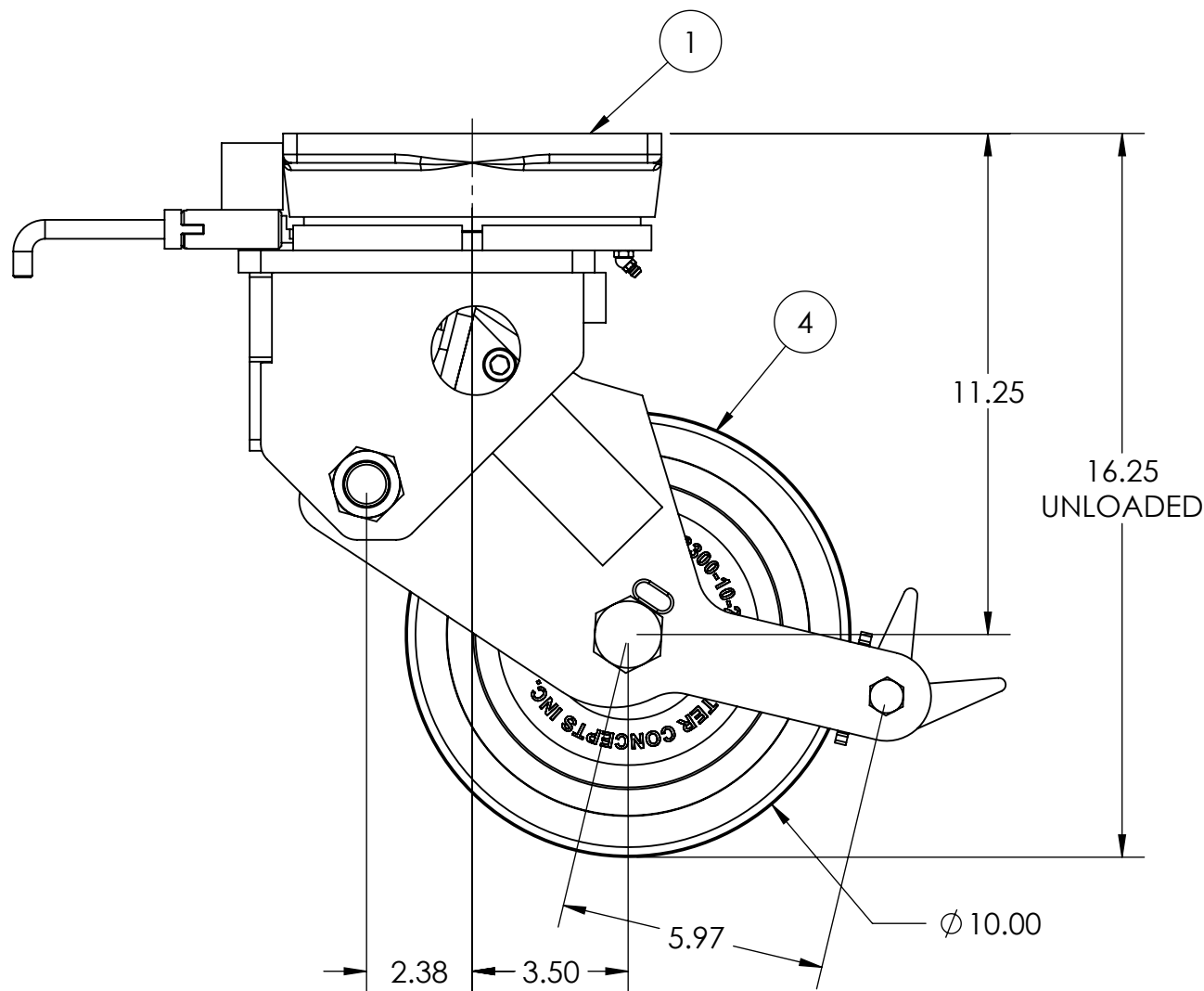
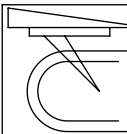
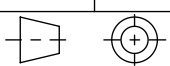


ITEM NO.	Default /QTY.	PART/DRAWING NO.	DESCRIPTION	MATERIAL
1	1	SP18122001A	93-10500-00-1HDLPSP	MISC.
2	1	AX1611200	1-14 X 7 GRADE 5 HHCS	AISI 1038
3	1	LN161413	1"-14 LOW HEIGHT FLEXLOC NUT	STEEL
4	1	SPD18032705F	2-10502-95-16SP	MISC.

- NOTES:
1. CASTER IS RATED FOR 6,000 LBS
 2. FLOOR LOADING AT 6,000 LBS OF LOAD = 735 PSI
 3. POLY TIRE IS HPPT
 4. ESTIMATED COF OF ROLLING RESISTANCE IS 3% OF LOAD TO START MOVING AND 1% OF LOAD TO MAINTAIN. (THIS IS FIGURING 2 SWIVEL AND 2 RIGID CASTERS ON SMOOTH, FLAT CONCRETE) APPLICATION AND FLOOR CONDITIONS WILL IMPACT THIS.



 CASTER CONCEPTS, INC. 16000 E. MICHIGAN AVE. ALBION, MI 49224 (517) 629-8838 casterconcepts.com		TOLERANCE SPECS. .XX = ±.030 .XXX = ±.010 X° = ±1.0° PART TO BE FREE OF BURRS AND SHARP EDGES		DESCRIPTION: 2-93-10252-95-1HDLPSP	
				PART/DRAWING NO:	SP18122001HDLP
WHERE USED:		FINISH SPECS.	GOLD POWDER COATING ON RIG, GRAY PAINT ON WHEEL CORE		
CHECKED BY:	PRAVEEN K.	MATERIAL SPECS.		APPROVED BY:	
		DRAWN BY		TARUN B.	THIRD ANGLE 

NOTICE:THIS DRAWING AND DESIGN INFORMATION CONTAINED HEREIN SHALL REMAIN THE SOLE PROPERTY OF CASTER CONCEPTS INC. IT IS SUBMITTED FOR USE IN REFERENCE ONLY AND SHALL NOT BE DUPLICATED OR GIVEN TO A THIRD PARTY WITHOUT THE WRITTEN CONSENT OF CASTER CONCEPTS INC. THIS DRAWING MUST BE RETURNED TO CASTER CONCEPTS INC. UPON REQUEST AT ANY TIME. ACCEPTANCE OF THIS DRAWING SHALL BE CONSTRUED AS AN AGREEMENT OF THESE TERMS.