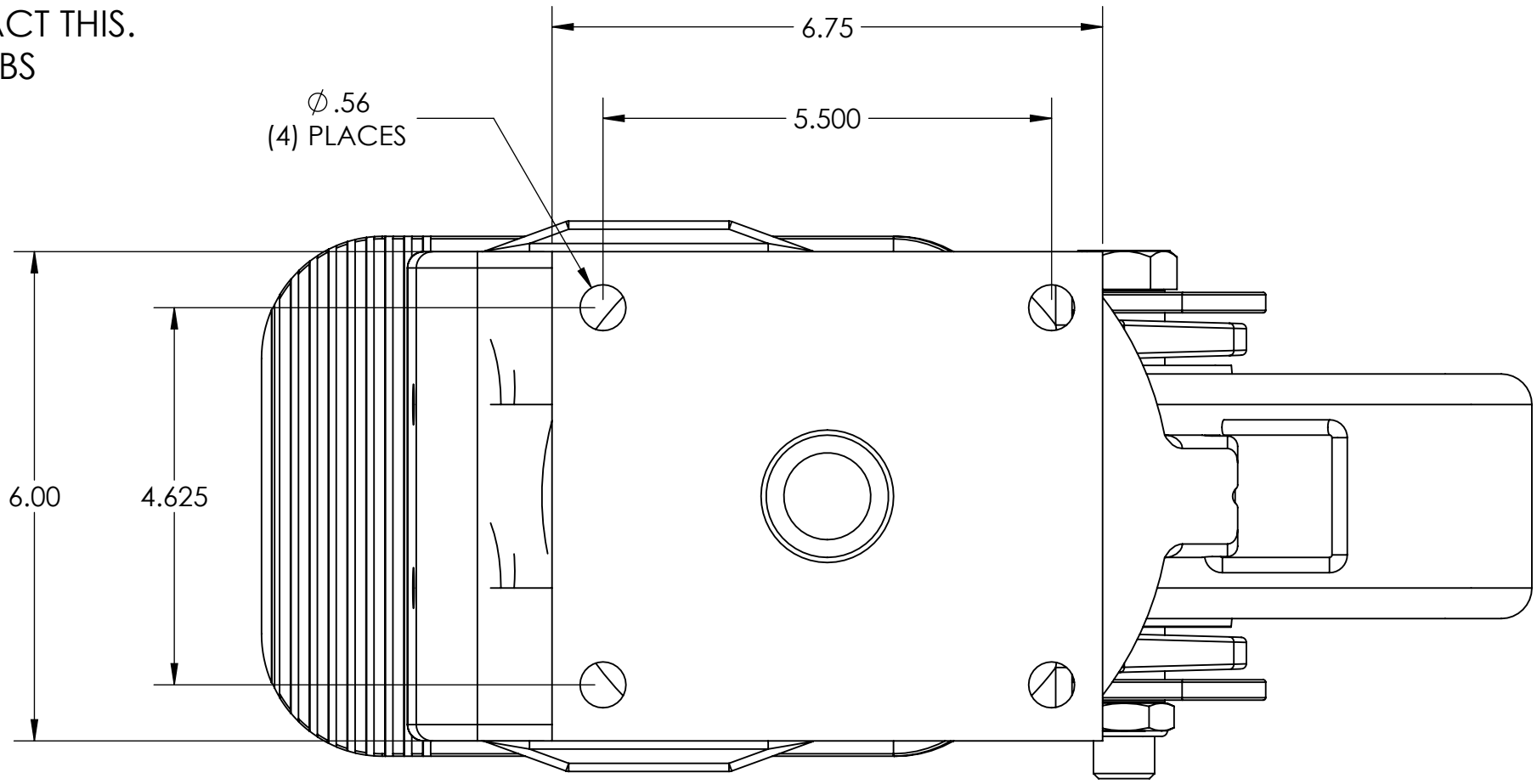
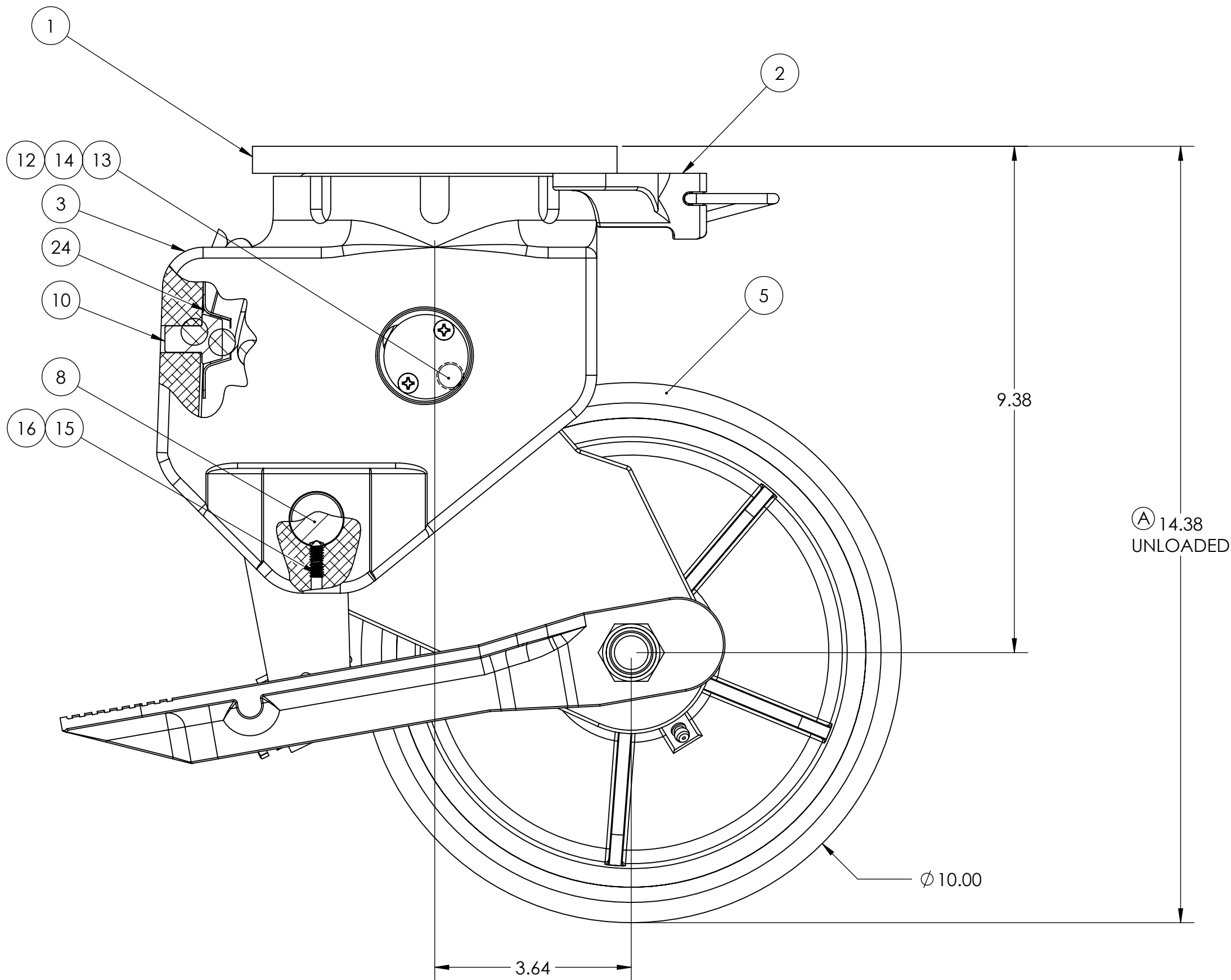


NOTES:

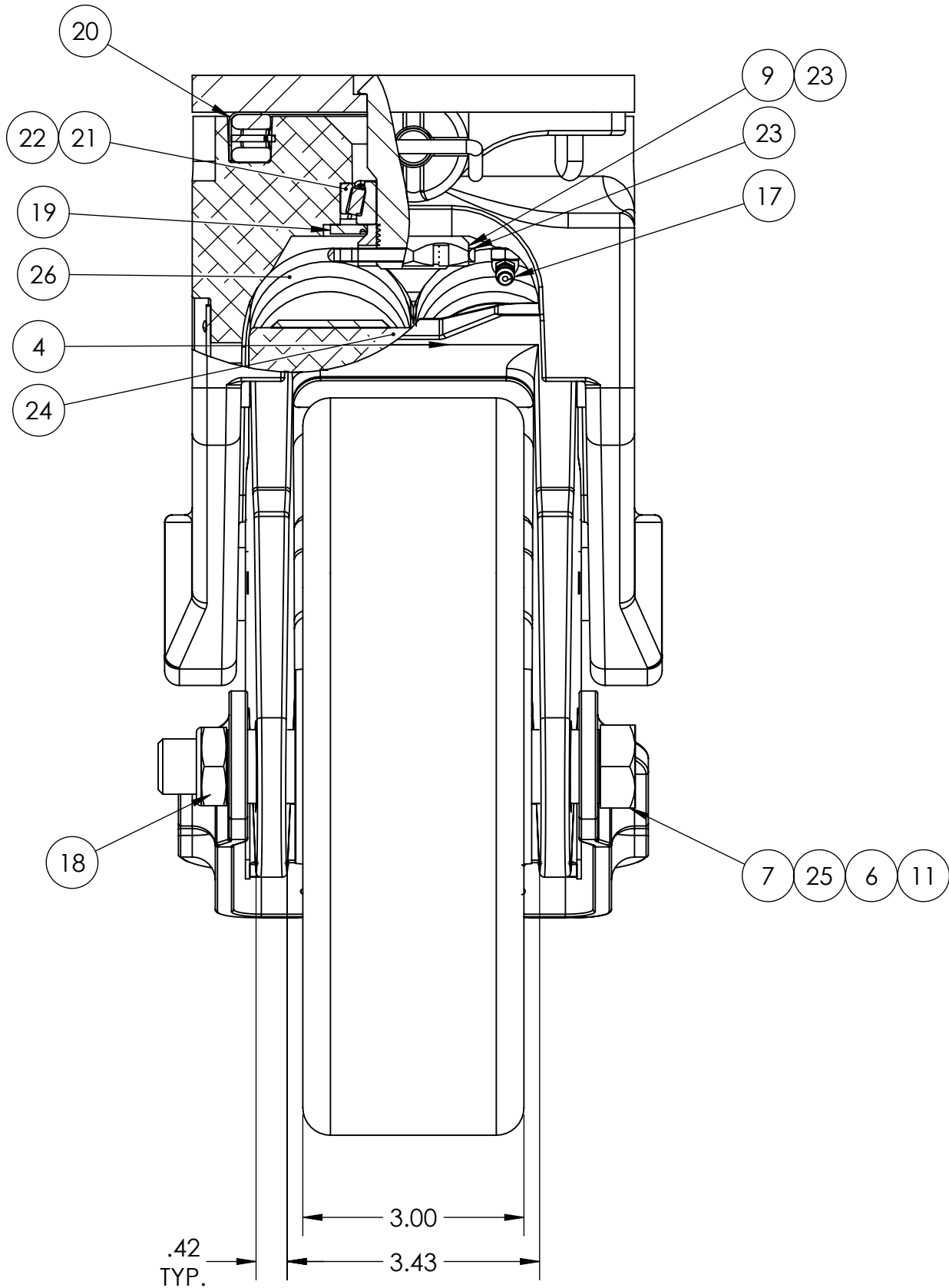
1. CASTER IS RATED AS 1,400 LBS @ WALKING SPEEDS, INTERMITTENT USE.
2. AT 1,400 LBS OF THE LOAD THERE WILL BE A CALCULATED FLOOR LOAD OF 441 PSI.
3. ESTIMATED COF OF ROLLING RESISTANCE IS 3% OF LOAD TO START MOVING AND 1% OF LOAD TO MAINTAIN. (THIS IS FIGURING 2 SWIVEL AND 2 RIGID CASTERS ON SMOOTH, FLAT CONCRETE) APPLICATION AND FLOOR CONDITIONS WILL IMPACT THIS.
4. CASTER WEIGHT: 41.69LBS



STICKERS REQUIRED:
TRADEMARK LABEL (#1733)
REGREASE LABEL (#1876)
SERIAL NUMBER NAMEPLATE (#R-1022)



ITEM NO.	QTY.	PART/DRAWING NO.	DESCRIPTION	MATERIAL
1	1	SP-52A	39 SER. TOP PLATE ASSEMBLY	MISC.
2	1	HM-1A	39 SER. SWIVEL LOCK ASSEMBLY	MISC.
3	1	C1-1DN	39 SER MACHINED ALUM NOTCHED YOKE	MISC.
4	1	C2-37-10A	39 SER. ALUM ROCKER ARM ASSEMBLY	MISC.
5	1	10-46AF	10.00 X 3.00 MACHINED ALUM POLY WHEEL W/A, 3/4 RBB	MISC.
6	1	WB-5	39 SER. 10" BRAKE ASSEMBLY	MISC.
7	1	AX129600	3/4-16 X 6 GRADE 5 HHCS	AISI 1038
8	1	R-693	Ø1.00 X 6.75 HINGE PIN ZINC PLATED	STRESSPROOF
9	1	R-1082	1.0-14 HEX SLOTTED NUT	STEEL
10	2	R-1090	39 SER SPRING BUTTON	C12L14
11	2	SB12160501	Ø.76 ID X Ø1.00 OD X .295 LGT NOTHCED SPACER PLATED	MISC.
12	1	R-1111	Ø50 X 5.50 STOP PIN ZINC PLATED	STRESSPROOF
13	2	YSL-5A	Ø1.56 X 16 GA THK. STOP PIN RETAINER	AISI 1008
14	4	SC030600	#10-32 X 3/8 LGT, PAN HEAD PHILIPS,THREAD ROLLING SCREW	STEEL
15	1	SS042005	1/4-20 X 5/16 LGT OVAL POINT SET SCREW C/W NYLON PATCH	STEEL
16	1	SS04200601	1/4-20 X 3/8 LGT CONE POINT SET SCREW	STEEL
17	1	ZF030065	.19 DRIVE 65 DEGREE ZERK FITTING	AISI 12L14
18	1	LN121604	3/4-16 NYLOCK LOW HEIGHT NUT	STEEL
19	1	SW203602	1-1/4 ID X 2-1/4 OD X 1/8" THK SEALED WASHER	STEEL
20	1	TBT387000	85 SER LOAD BEARING	STEEL
21	1	TB163201	Ø1.00 TAPERED BEARING CUP (L44610)	STEEL
22	1	TB163200	Ø1.00 TAPERED BEARING CONE	STEEL
23	1	KY033200	Ø.188 X 2.00 COTTER PIN	STEEL
24	4	YSL-11	SPRING WEAR PLATE	AISI 1008
25	2	KY030500	3/16 X 5/16 LGT ZINC PLATED ROLL PIN	SPRING STEEL
26	2	A-4950	COMPRESSION SPRING BLACK	STEEL



<div><div><div>CASTER CONCEPTS, INC.</div></div><div>16000 E. MICHIGAN AVE. ALBION, MI 49224 (517)629-8838 casterconcepts.com</div></div> <div>WHERE USED:<div></div>CHECKED BY: INEKIBUR R.</div>	TOLERANCE SPECS.	UNLESS OTHERWISE SPECIFIED THE FOLLOWING TOLERANCES APPLY: .XX = ±.030 .XXX = ±.010 X° = ±1.0° PART TO BE FREE OF BURRS AND SHARP EDGES			DESCRIPTION: 3912S10CSP (A-4950 SPRING)
	FINISH SPECS.				PART/DRAWING NO: SP18121301LP
	MATERIAL SPECS.	APPROVED BY:			DATE: 4/1/2019
		DRAWN BY: PRAVEEN K.			SCALE: 1:2 D-SIZE

NOTICE: THIS DRAWING AND DESIGN INFORMATION CONTAINED HEREIN SHALL REMAIN THE SOLE PROPERTY OF CASTER CONCEPTS INC. IT IS SUBMITTED FOR USE IN REFERENCE ONLY AND SHALL NOT BE DUPLICATED OR GIVEN TO A THIRD PARTY WITHOUT THE WRITTEN CONSENT OF CASTER CONCEPTS INC. THIS DRAWING MUST BE RETURNED TO CASTER CONCEPTS INC. UPON REQUEST AT ANY TIME. ACCEPTANCE OF THIS DRAWING SHALL BE CONSTRUED AS AN AGREEMENT OF THESE TERMS.