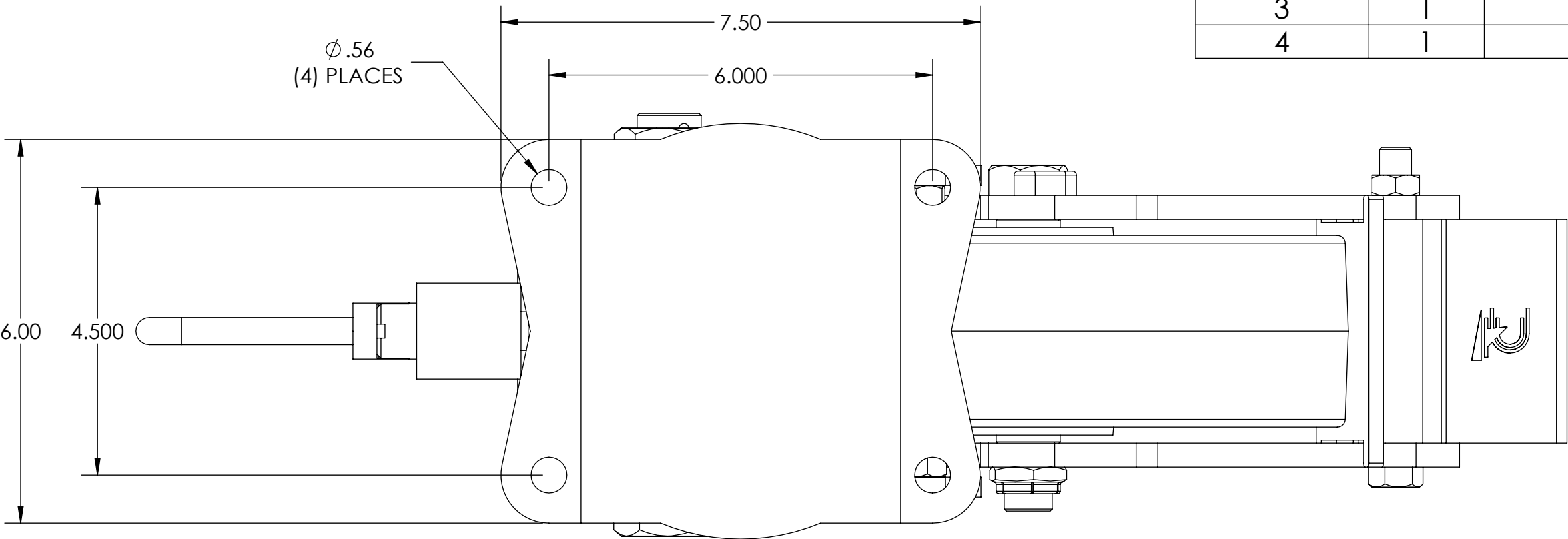
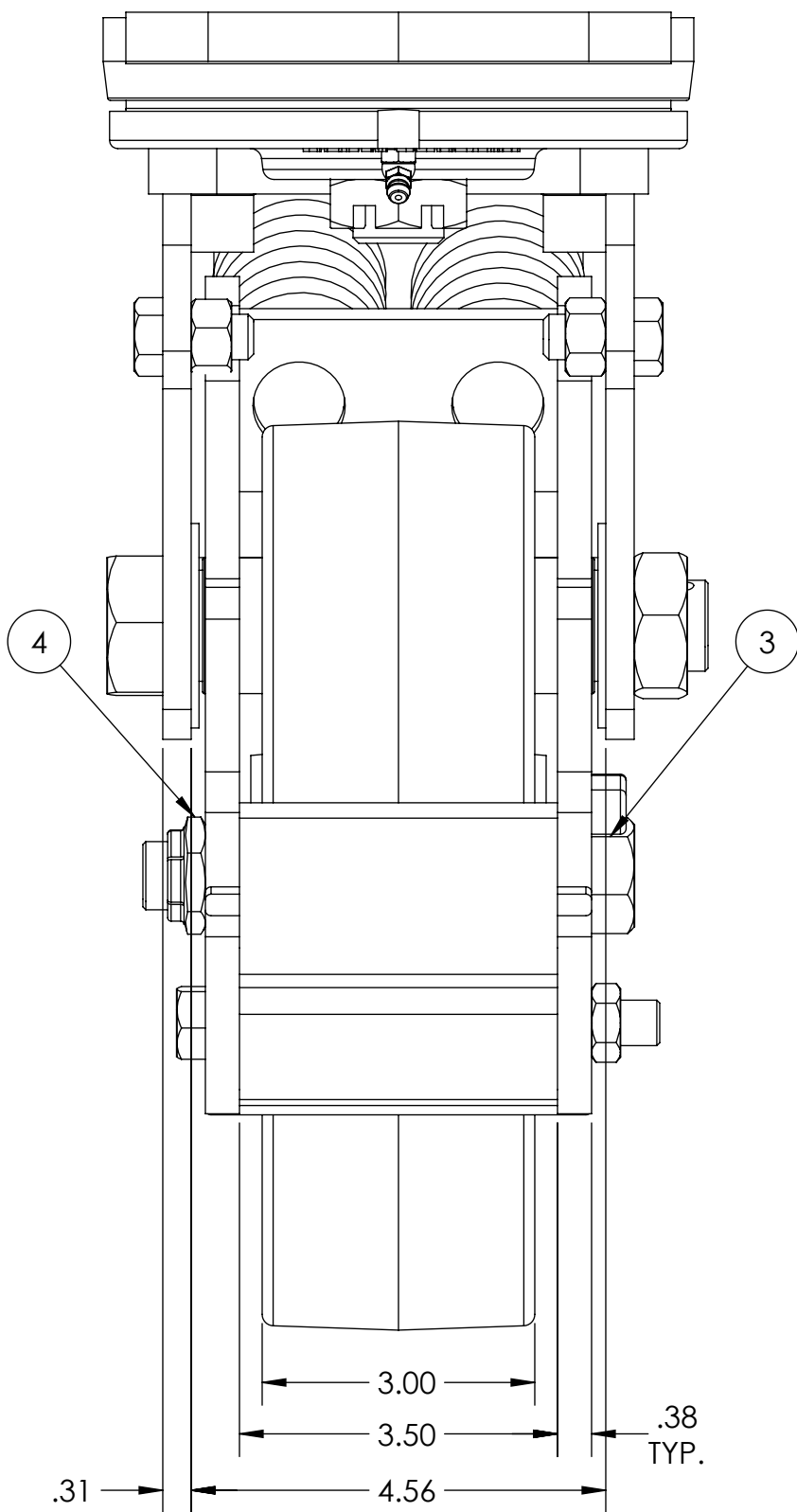
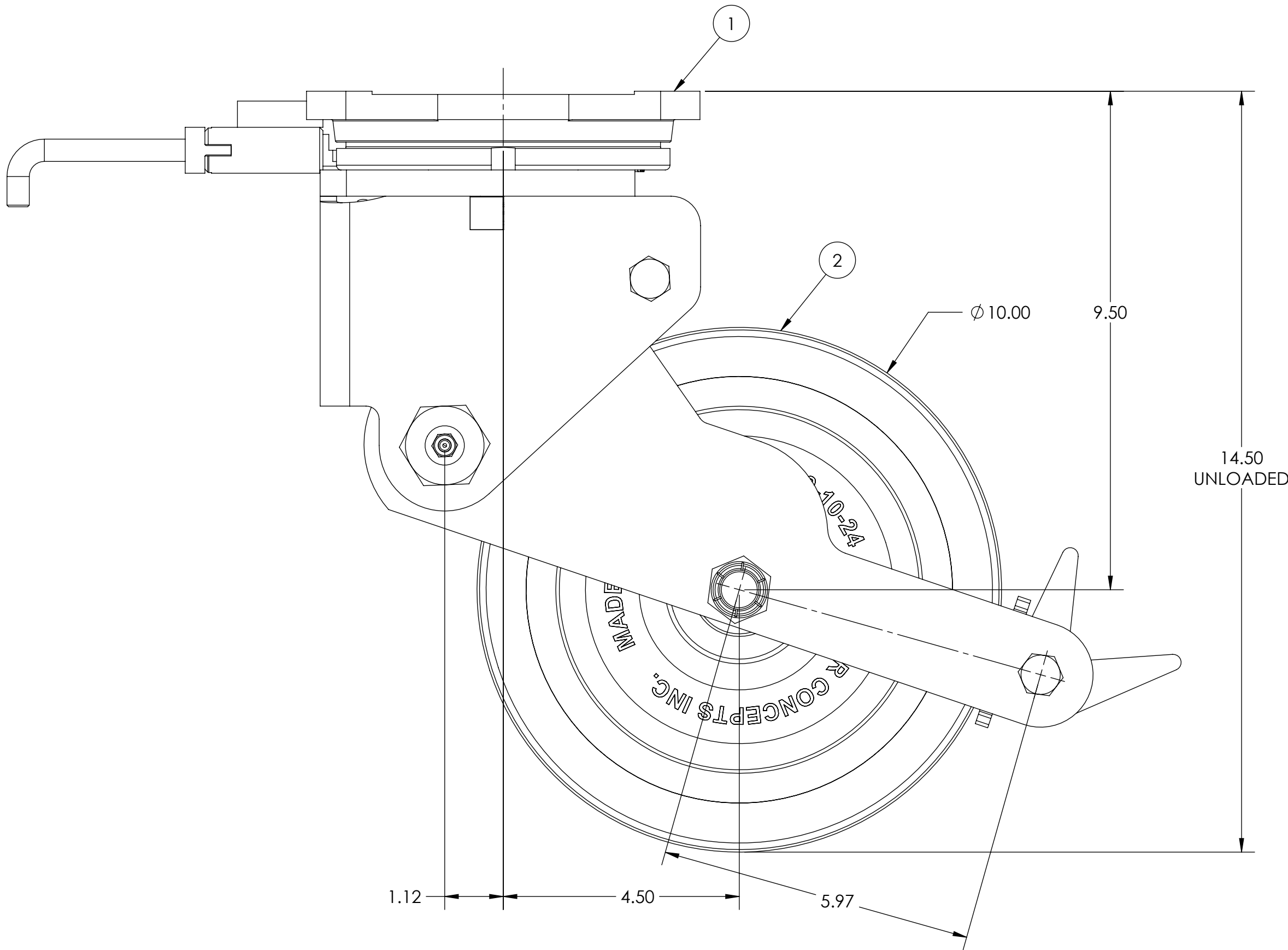
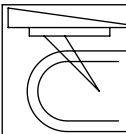
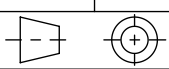


ITEM NO.	QTY.	PART/DRAWING NO.	DESCRIPTION	MATERIAL
1	1	83-10300-00-1HDLP	83 SER. 10.00 X 3.00 SWL. RIG C/W HDSL & PLB	MISC.
2	1	10309-66-12	Ø10.00 X 3.00 85 SHORE A POLY WHEEL 3/4 TB	MISC.
3	1	AX127900C	3/4-10 X 4-15/16 SOLID AXLE ZINC	AISI 1038
4	1	LN12100701	3/4-10 LOW HEIGHT FLEXLOC NUT	STEEL



- NOTES:
1. CASTER IS RATED AS 1,700 LBS @ WALKING SPEEDS, INTERMITTENT USE.
 2. AT 1,700 LBS OF THE LOAD THERE WILL BE A CALCULATED FLOOR LOAD OF 320 PSI.
 3. ESTIMATED COF OF ROLLING RESISTANCE IS 3% OF LOAD TO START MOVING AND 1% OF LOAD TO MAINTAIN. (THIS IS FIGURING 2 SWIVEL AND 2 RIGID CASTERS ON SMOOTH, FLAT CONCRETE) APPLICATION AND FLOOR CONDITIONS WILL IMPACT THIS.
 4. CASTER WEIGHT: 66.40LBS



 CASTER CONCEPTS, INC.		16000 E. MICHIGAN AVE. ALBION, MI 49224 (517) 629-8838 casterconcepts.com	TOLERANCE SPECS.		UNLESS OTHERWISE SPECIFIED THE FOLLOWING TOLERANCES APPLY: .XX = ±.030 .XXX = ±.010 X° = ±1.0° PART TO BE FREE OF BURRS AND SHARP EDGES		DESCRIPTION: 83-10309-66-1HDLPSP	
WHERE USED:			FINISH SPECS.		GOLD POWDER COATING, GRAY PAINT ON WHEEL CORE		PART/DRAWING NO: SP18120702HDLP	
CHECKED BY:		NEKIBUR R.	MATERIAL SPECS.		APPROVED BY:		DATE: 3/28/2019	
					DRAWN BY PRAVEEN K.		SCALE: 1:2 C-SIZE	
							THIRD ANGLE 	

NOTICE:THIS DRAWING AND DESIGN INFORMATION CONTAINED HEREIN SHALL REMAIN THE SOLE PROPERTY OF CASTER CONCEPTS INC. IT IS SUBMITTED FOR USE IN REFERENCE ONLY AND SHALL NOT BE DUPLICATED OR GIVEN TO A THIRD PARTY WITHOUT THE WRITTEN CONSENT OF CASTER CONCEPTS INC. THIS DRAWING MUST BE RETURNED TO CASTER CONCEPTS INC. UPON REQUEST AT ANY TIME. ACCEPTANCE OF THIS DRAWING SHALL BE CONSTRUED AS AN AGREEMENT OF THESE TERMS.