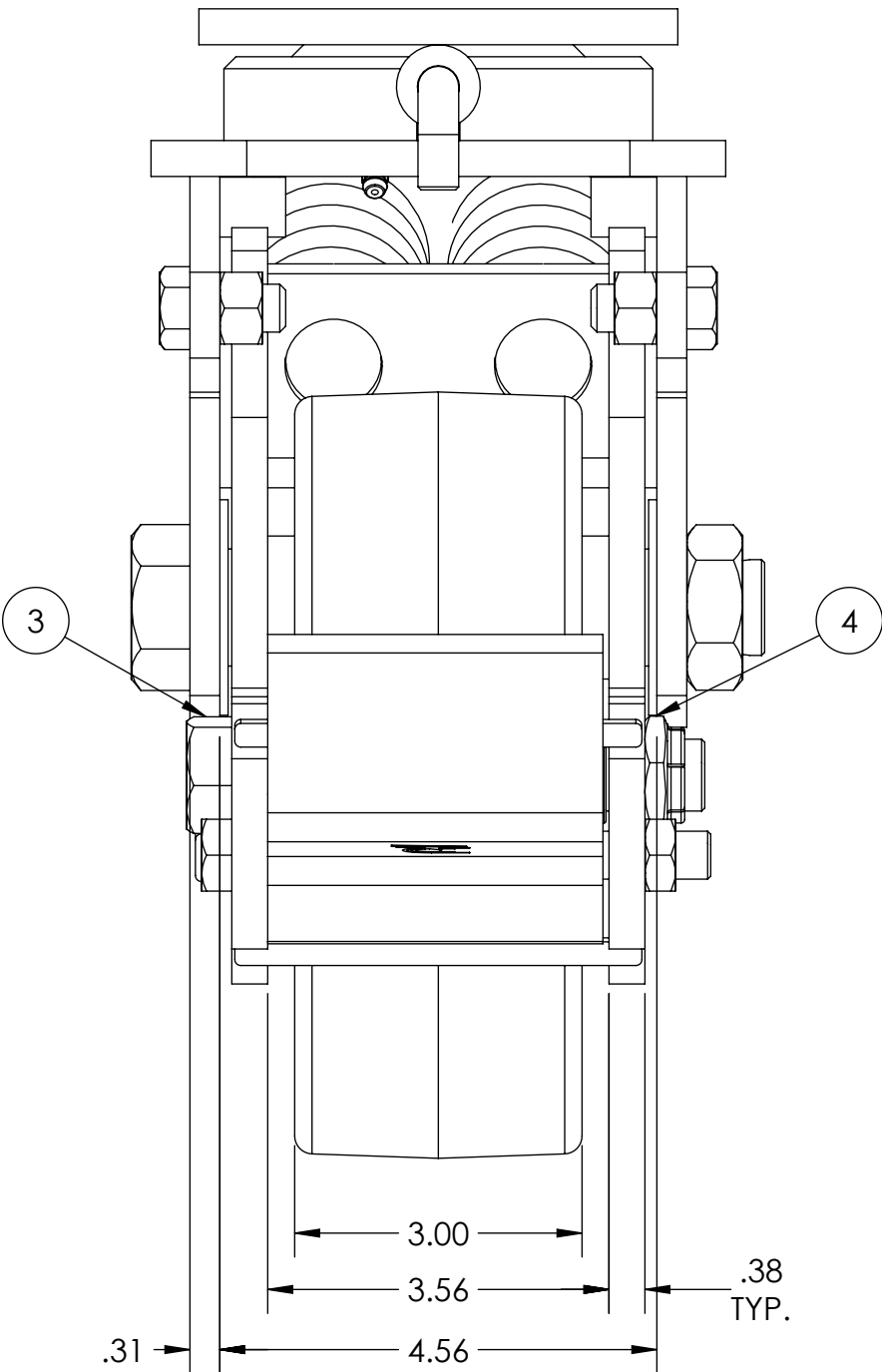
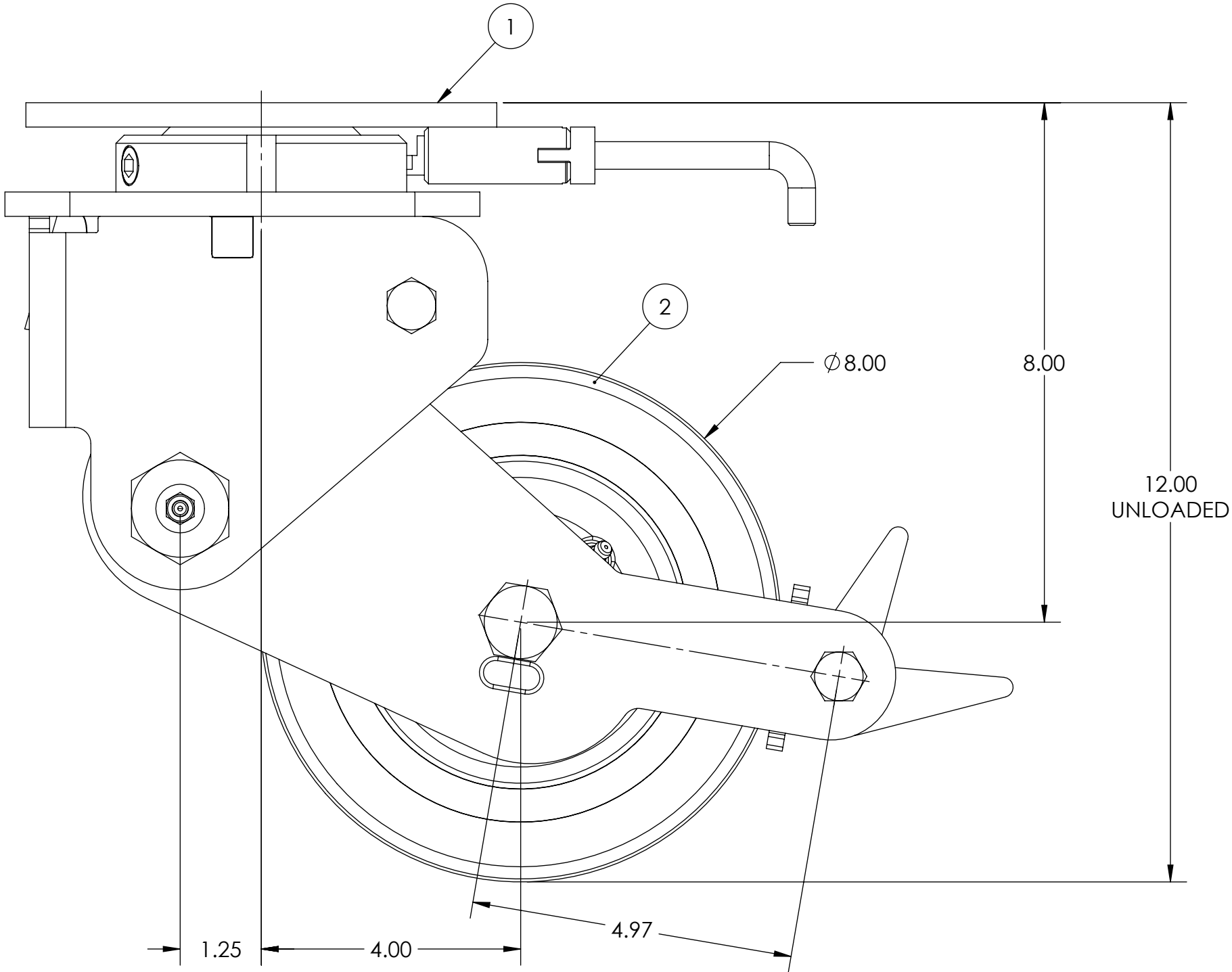
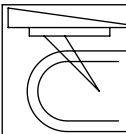
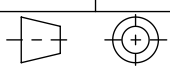


| ITEM NO. | QTY. | PART/DRAWING NO. | DESCRIPTION | MATERIAL |
|----------|------|-------------------|---|-----------|
| 1 | 1 | 73-08300-00-1HDLP | 73 SER. 8.00 X 3.00 SWL. RIG C/W HDSL & PLB | MISC. |
| 2 | 1 | 08309-66-12 | Ø8.00 X 3.00 85 SHORE A POLY WHEEL | MISC. |
| 3 | 1 | AX127900C | 3/4-10 X 4-15/16 SOLID AXLE ZINC | AISI 1038 |
| 4 | 1 | LN12100701 | 3/4-10 LOW HEIGHT FLEXLOC NUT | STEEL |

- NOTES:
1. CASTER IS RATED AS 1,100 LBS @ WALKING SPEEDS, INTERMITTENT USE.
 2. AT 1,100 LBS OF THE LOAD THERE WILL BE A CALCULATED FLOOR LOAD OF 258 PSI.
 3. ESTIMATED COF OF ROLLING RESISTANCE IS 3% OF LOAD TO START MOVING AND 1% OF LOAD TO MAINTAIN. (THIS IS FIGURING 2 SWIVEL AND 2 RIGID CASTERS ON SMOOTH, FLAT CONCRETE) APPLICATION AND FLOOR CONDITIONS WILL IMPACT THIS.
 4. CASTER WEIGHT : 51.32LBS



| | | | | | |
|---|------------|---|---|----------------------------------|---|
|  CASTER CONCEPTS, INC. 16000 E. MICHIGAN AVE. ALBION, MI 49224 (517) 629-8838 casterconcepts.com | | TOLERANCE SPECS. .XX = ±.030 .XXX = ±.010 X° = ±1.0° PART TO BE FREE OF BURRS AND SHARP EDGES | | DESCRIPTION: 73-08309-66-1HDLPSP | |
| | | | | PART/DRAWING NO: | SP18120501HDLP |
| WHERE USED: | | FINISH SPECS. | ZINC PLATING ON RIG, GRAY PAINT ON WHEEL CORE | | |
| CHECKED BY: | NEKIBUR R. | MATERIAL SPECS. | | APPROVED BY: | |
| | | DRAWN BY | | PRAVEEN K. | THIRD ANGLE |
| | | | | |  |

NOTICE:THIS DRAWING AND DESIGN INFORMATION CONTAINED HEREIN SHALL REMAIN THE SOLE PROPERTY OF CASTER CONCEPTS INC. IT IS SUBMITTED FOR USE IN REFERENCE ONLY AND SHALL NOT BE DUPLICATED OR GIVEN TO A THIRD PARTY WITHOUT THE WRITTEN CONSENT OF CASTER CONCEPTS INC. THIS DRAWING MUST BE RETURNED TO CASTER CONCEPTS INC. UPON REQUEST AT ANY TIME. ACCEPTANCE OF THIS DRAWING SHALL BE CONSTRUED AS AN AGREEMENT OF THESE TERMS.