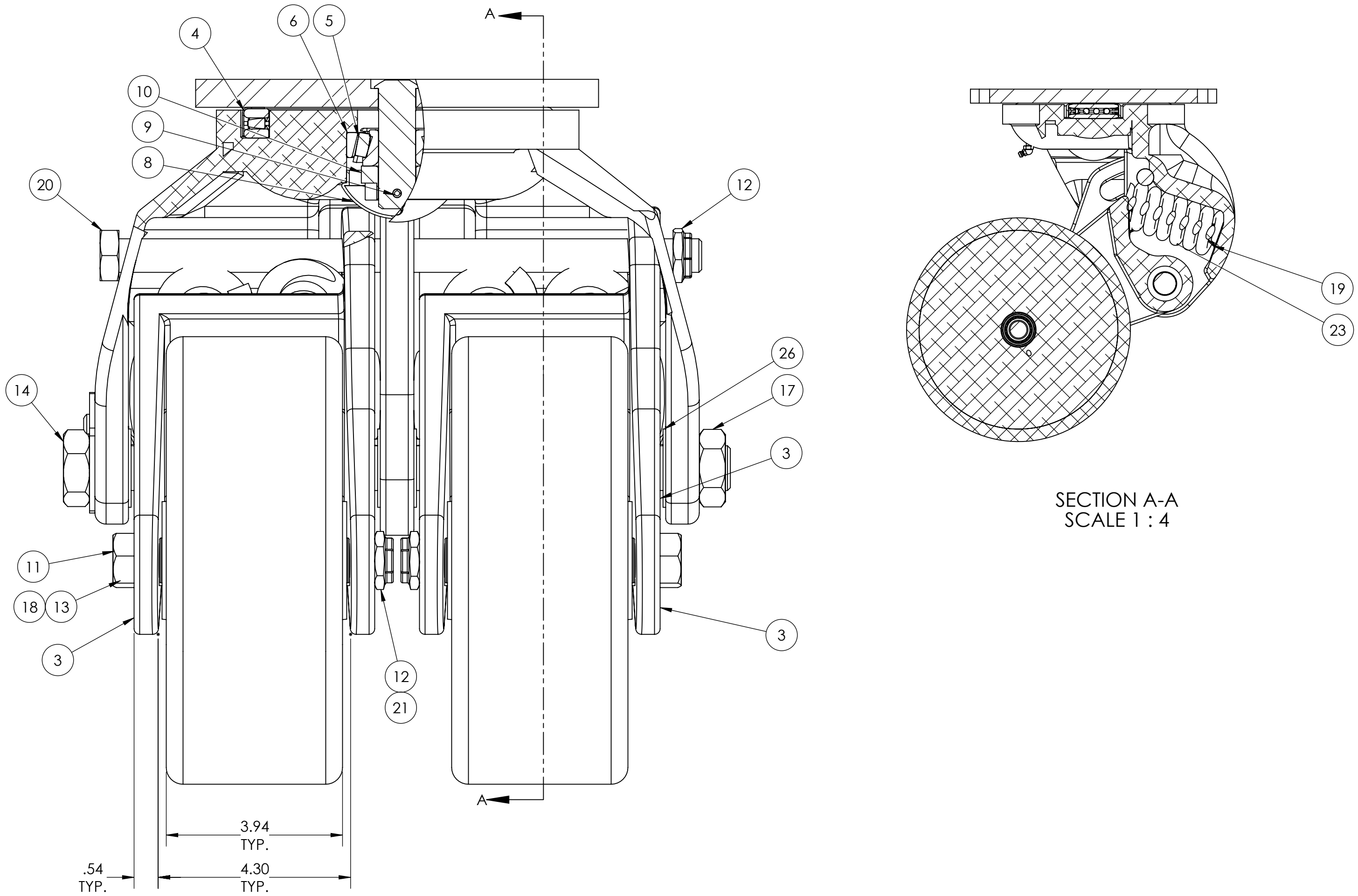
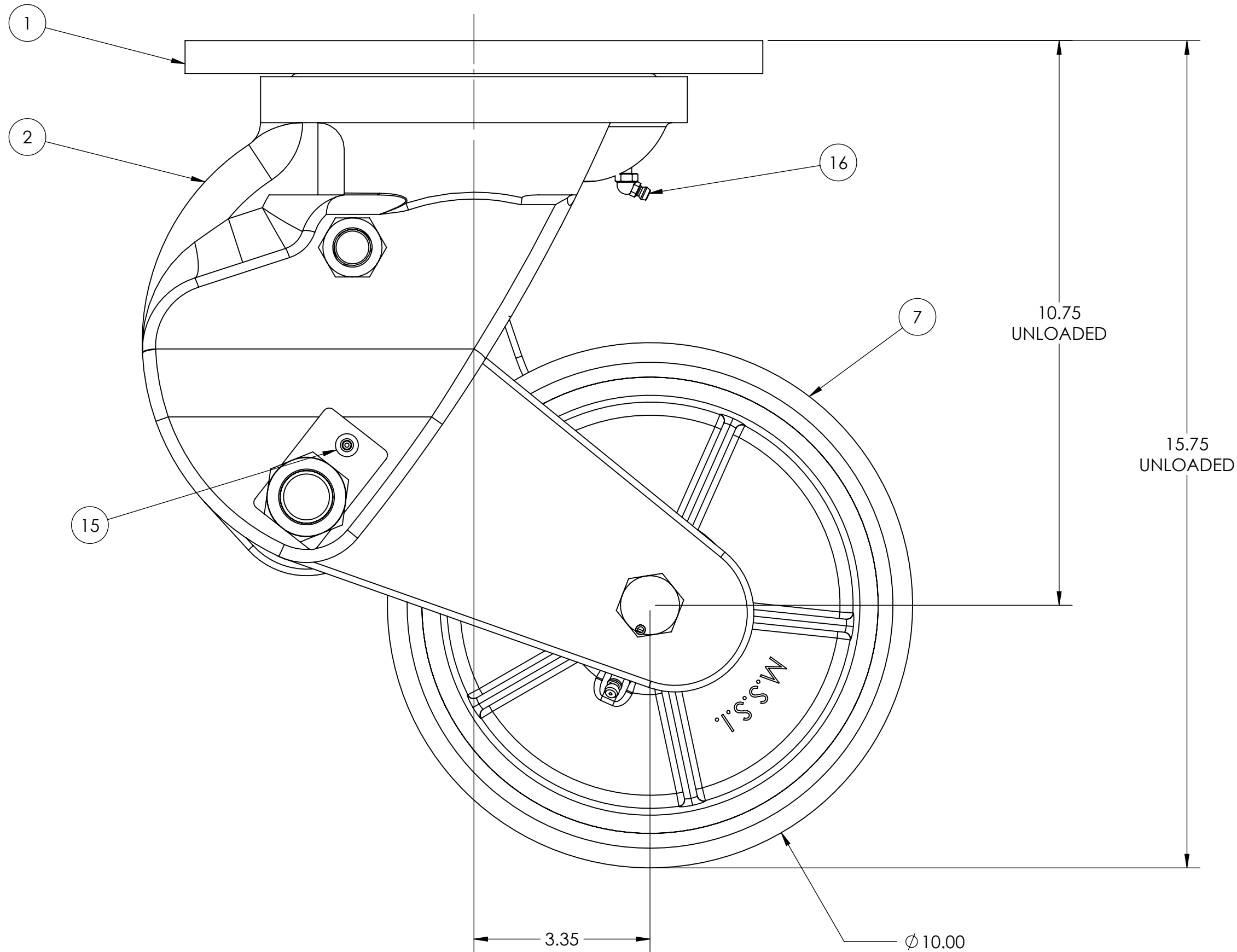



STICKERS REQUIRED:
TRADE MARK LABEL (# 1733)
REGREASE LABEL (#1876)
SERIAL NUMBER NAMEPLATE (#R-1022)

- NOTES:
1. CASTER IS RATED AS 4,750 LBS @ WALKING SPEEDS, INTERMITTENT USE.
 2. AT 4,750 LBS OF THE LOAD THERE WILL BE A CALCULATED FLOOR LOAD OF 555 PSI.
 3. ESTIMATED COF OF ROLLING RESISTANCE IS 3% OF LOAD TO START MOVING AND 1% OF LOAD TO MAINTAIN. (THIS IS FIGURING 2 SWIVEL AND 2 RIGID CASTERS ON SMOOTH, FLAT CONCRETE) APPLICATION AND FLOOR CONDITIONS WILL IMPACT THIS.
 4. CASTER WEIGHT: 94.72LBS



SECTION A-A
SCALE 1 : 4

 CASTER CONCEPTS, INC.	16000 E. MICHIGAN AVE. ALBION, MI 49224 (517)629-8838 casterconcepts.com	TOLERANCE SPECS.	UNLESS OTHERWISE SPECIFIED THE FOLLOWING TOLERANCES APPLY: .XX = $\pm .030$.XXX = $\pm .010$ X° = $\pm 1.0^\circ$ PART TO BE FREE OF BURRS AND SHARP EDGES		DESCRIPTION: 13840S10J (A-5050 SPRING)	
		FINISH SPECS.	PART/DRAWING NO: SP18120303			DATE: 4/2/2019
		MATERIAL SPECS.	APPROVED BY:	DRAWN BY: PRAVEEN K.	SCALE: 1:2	D-SIZE
WHERE USED:		CHECKED BY: NEKIBUR R.			THIRD ANGLE	