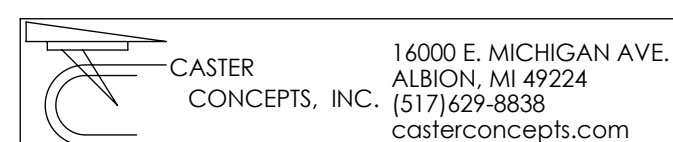
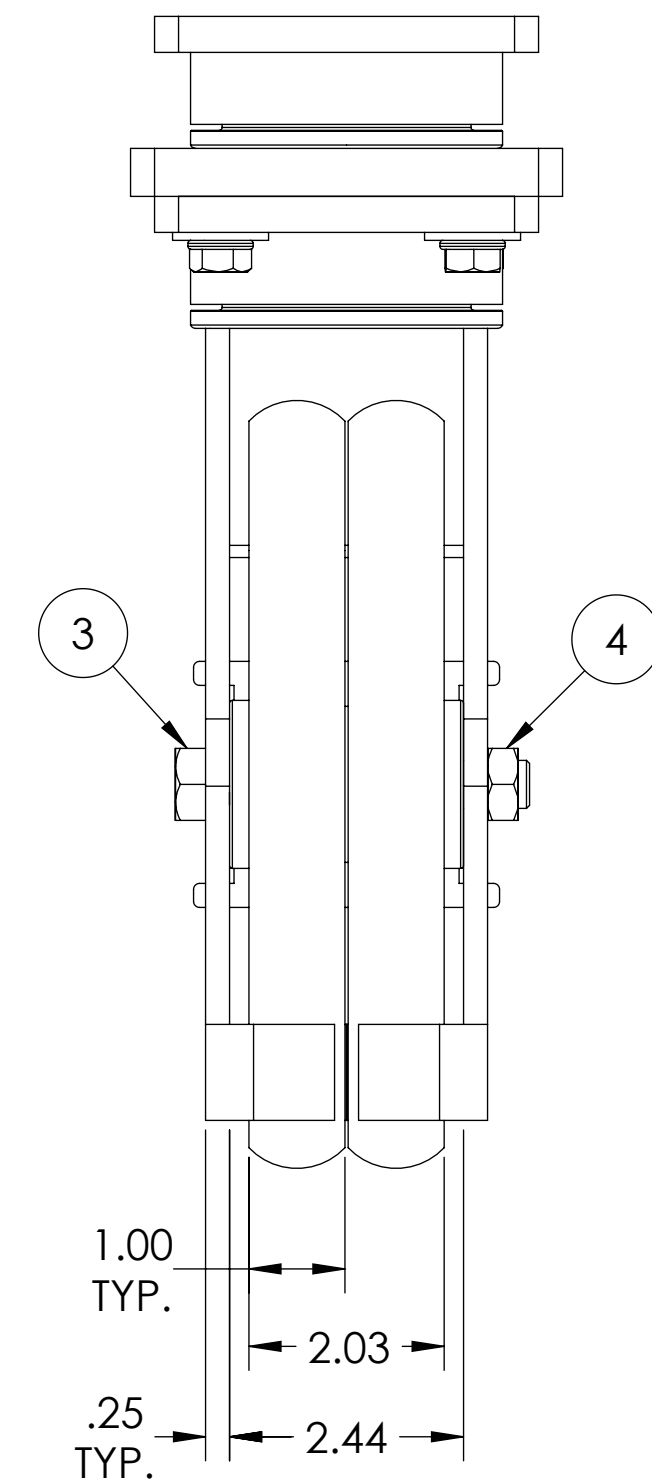
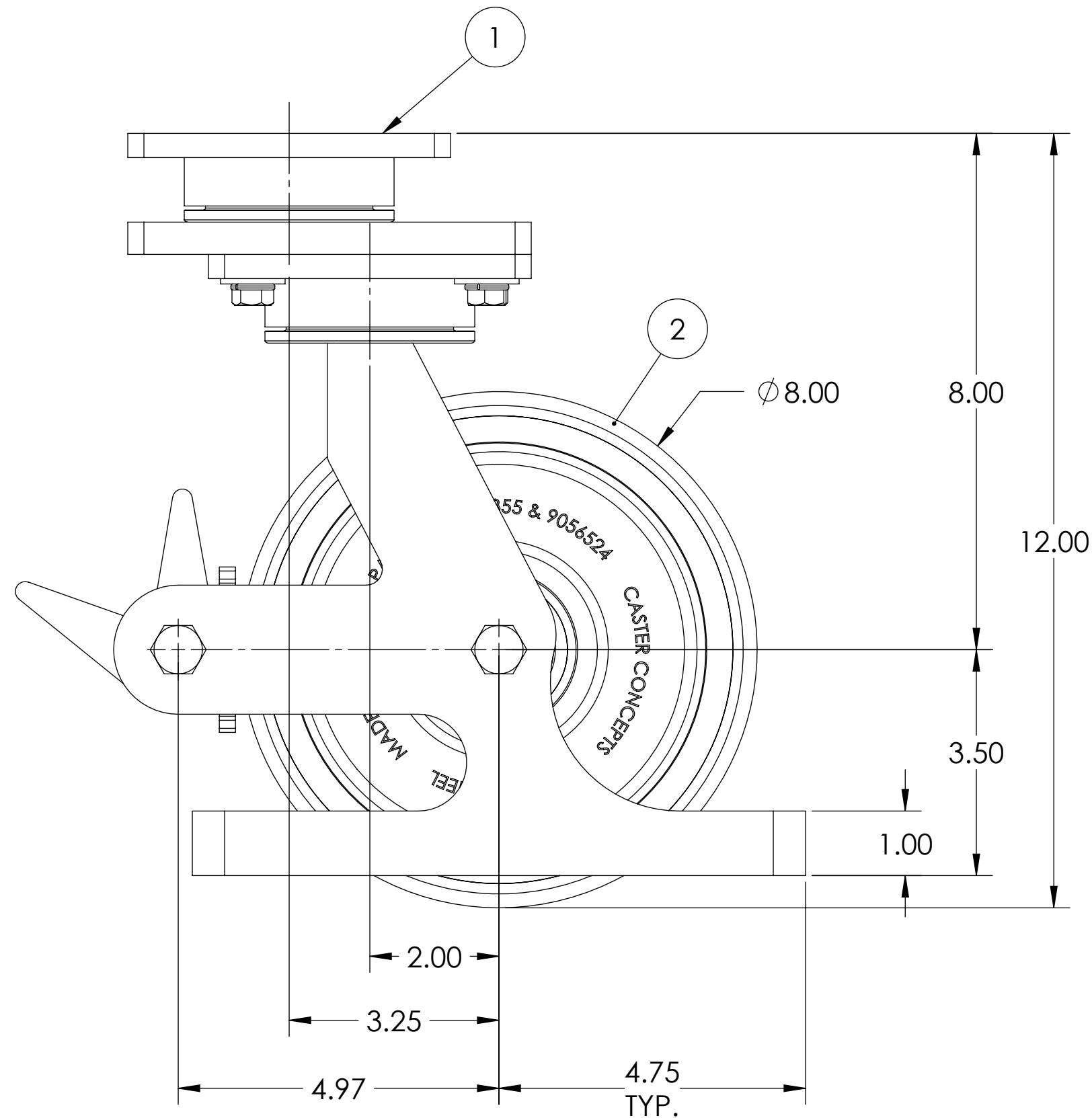


ITEM NO.	QTY.	PART/DRAWING NO.	DESCRIPTION	MATERIAL
1	1	110-08200-00-1PTG	110 SER. 8.00 X 2.00 SWL. RIG C/W PLB & TG	MISC.
2	1	08202-44-08	Ø8.00 X 2.00 ET85 TWERGO WHEEL	MISC.
3	1	AX085400	1/2-20 X 3-3/8 SOLID AXLE ZINC	AISI 1038
4	1	LN08200	1/2-20 TOP LOCK NUT	AISI 1038

NOTES:

1. CASTER IS RATED AS 1,000 LBS @ WALKING SPEEDS, INTERMITTENT USE.
2. AT 1,000 LBS OF THE LOAD THERE WILL BE A CALCULATED FLOOR LOAD OF 467 PSI.
3. ESTIMATED COF OF ROLLING RESISTANCE IS 3% OF LOAD TO START MOVING AND 1% OF LOAD TO MAINTAIN. (THIS IS FIGURING 2 SWIVEL AND 2 RIGID CASTERS ON SMOOTH, FLAT CONCRETE) APPLICATION AND FLOOR CONDITIONS WILL IMPACT THIS.
4. CASTER WEIGHT: 22.47LBS



WHERE USED:
CHECKED BY: NEKIBUR R.

TOLERANCE SPECS.

FINISH SPECS.

MATERIAL SPECS.

UNLESS OTHERWISE SPECIFIED THE FOLLOWING TOLERANCES APPLY:
.XX = ±.030 .XXX = ±.010 X° = ±1.0°
PART TO BE FREE OF BURRS AND SHARP EDGES

ZINC PLATING ON RIG

APPROVED BY:

DESCRIPTION: 110-08202-44-1PTGSP

PART/DRAWING NO: SP18121002

DRAWN BY: PRAVEEN K.

DATE: 04/02/2019

SCALE: 1:2 C-SIZE

THIRD ANGLE

NOTICE: THIS DRAWING AND DESIGN INFORMATION CONTAINED HEREIN SHALL REMAIN THE SOLE PROPERTY OF CASTER CONCEPTS INC. IT IS SUBMITTED FOR USE IN REFERENCE ONLY AND SHALL NOT BE DUPLICATED OR GIVEN TO A THIRD PARTY WITHOUT THE WRITTEN CONSENT OF CASTER CONCEPTS INC. THIS DRAWING MUST BE RETURNED TO CASTER CONCEPTS INC. UPON REQUEST AT ANY TIME. ACCEPTANCE OF THIS DRAWING SHALL BE CONSTRUED AS AN AGREEMENT OF THESE TERMS.