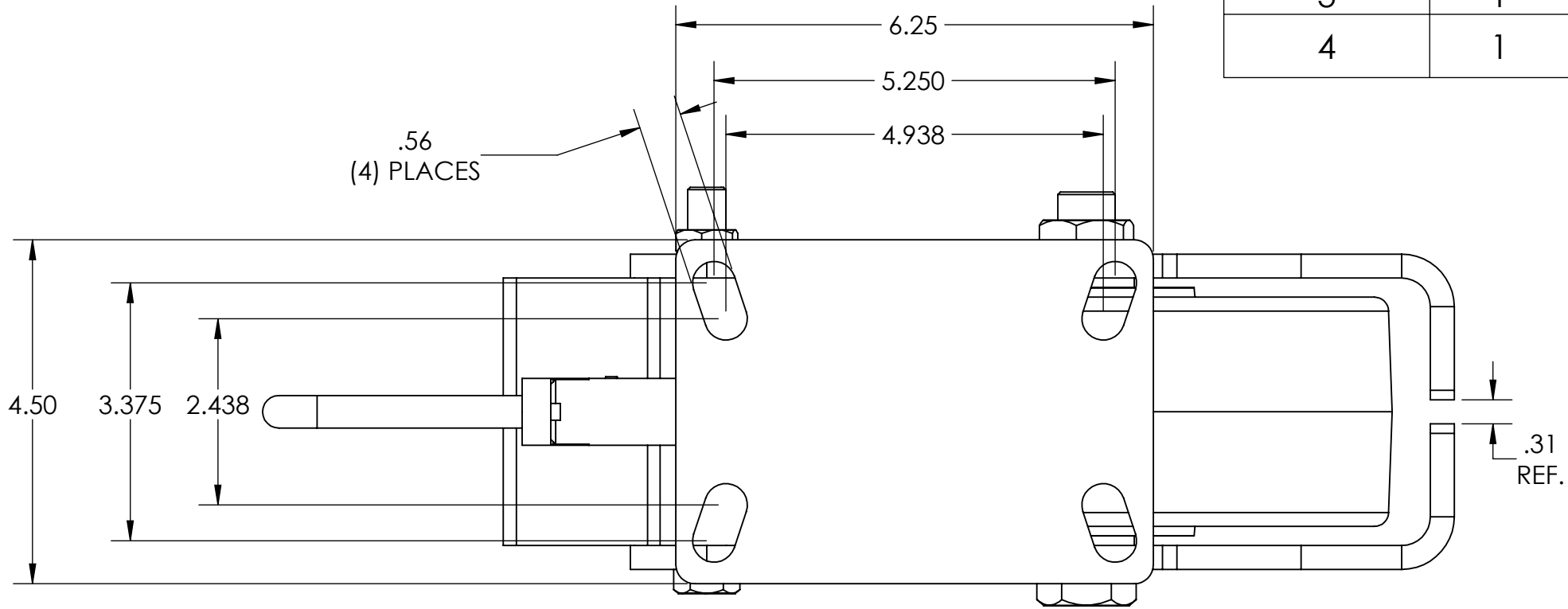
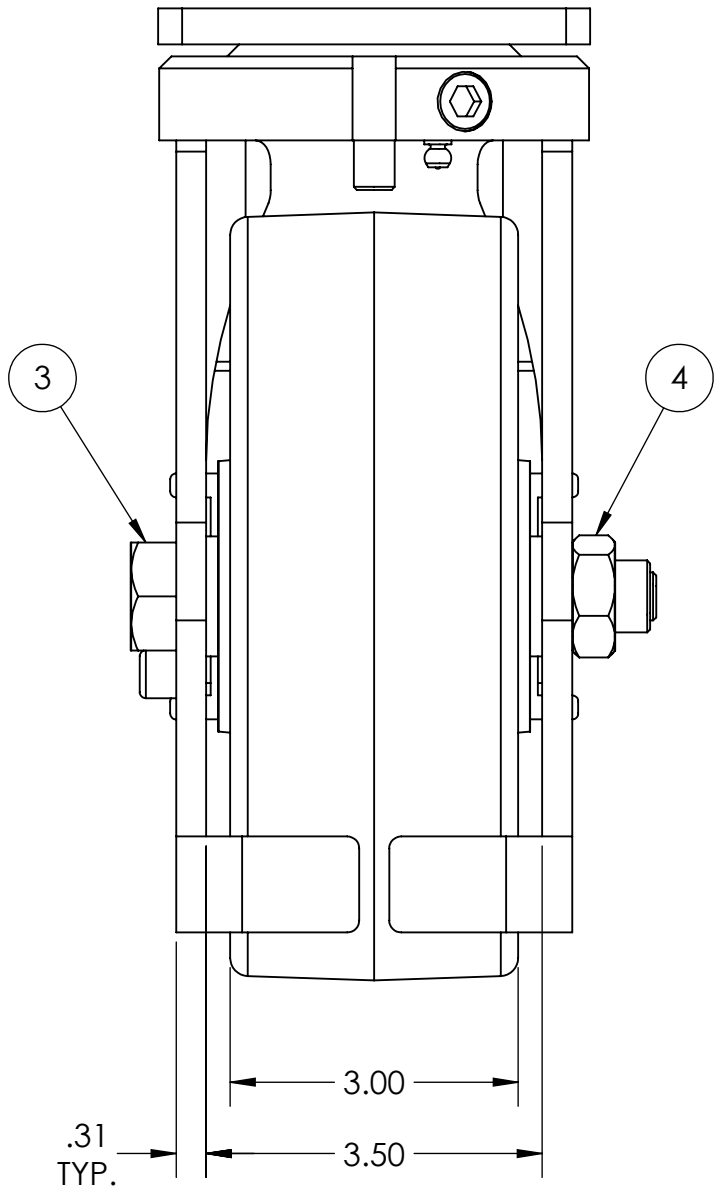
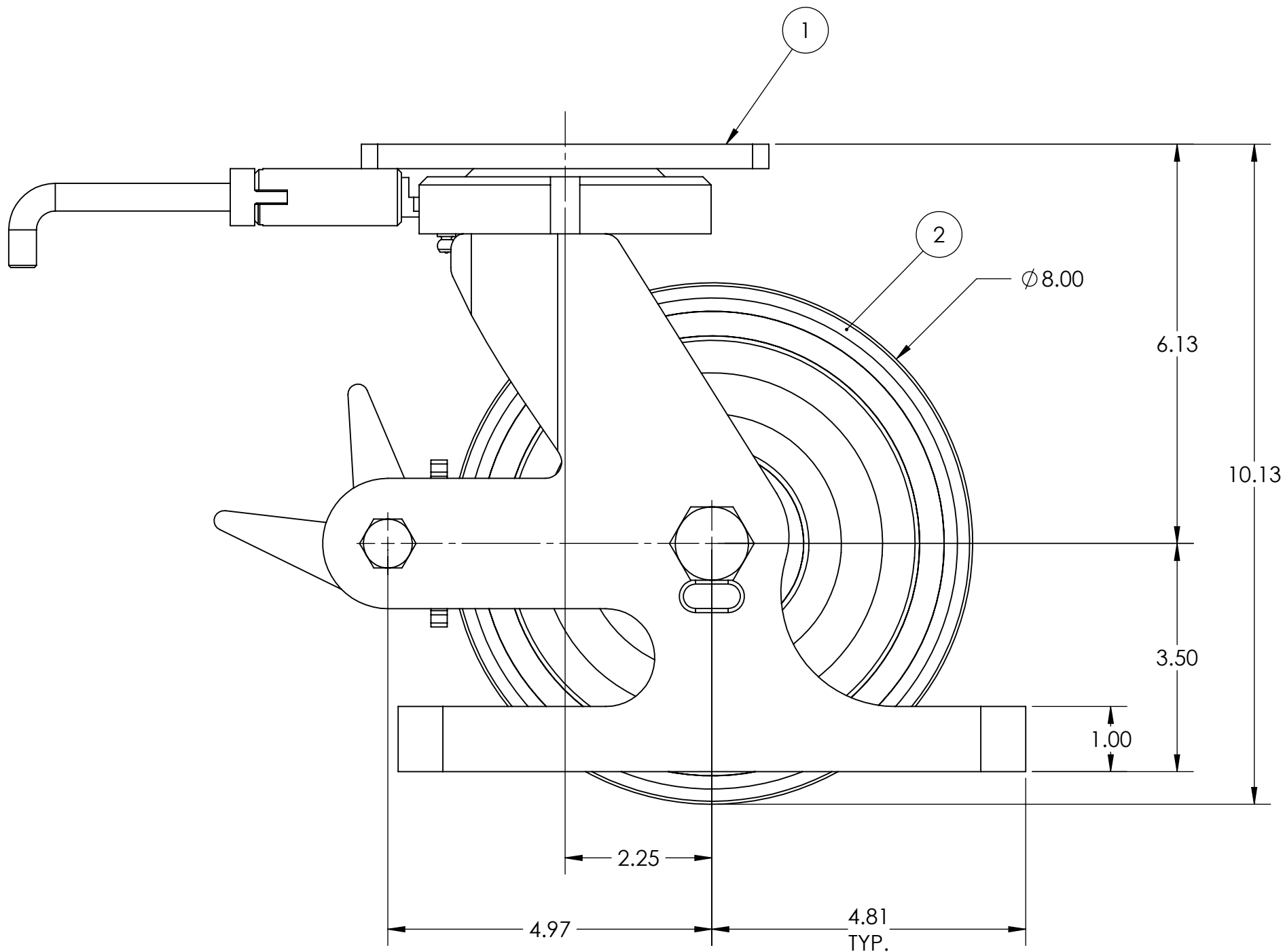


ITEM NO.	QTY.	PART/DRAWING NO.	DESCRIPTION	MATERIAL
1	1	61-08300-00-1HDLPTG	61 SER. 8.00 X 3.00 SWL. RIG C/W HDSL, PLB, & TG	MISC.
2	1	08302-91-12	Ø8.00 X 3.00 T/R-95 POLY WHEEL	MISC.
3	1	AX127900C	3/4-10 X 4-15/16 SOLID AXLE ZINC	AISI 1038
4	1	LN121007	3/4-10 CENTER LOCK LOW HEIGHT JAM NUT, ZINC PLATED	AISI 1038

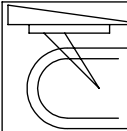
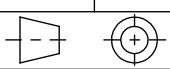


NOTES:

- ① 1. CASTER IS RATED AS 2,800 LBS @ WALKING SPEEDS, INTERMITTENT USE.
- ② 2. AT 2,800 LBS OF THE LOAD THERE WILL BE A CALCULATED FLOOR LOAD OF 933 PSI.
3. ESTIMATED COF OF ROLLING RESISTANCE IS 3% OF LOAD TO START MOVING AND 1% OF LOAD TO MAINTAIN. (THIS IS FIGURING 2 SWIVEL AND 2 RIGID CASTERS ON SMOOTH, FLAT CONCRETE) APPLICATION AND FLOOR CONDITIONS WILL IMPACT THIS.
4. CASTER WEIGHT: 32.30LBS



PRAVEEN K.	A	WAS 2,000 LOAD & 732 PSI FLOOR LOAD	10/14/2020
REV. APPROVALS	NO.	REVISION	DATE

 CASTER CONCEPTS, INC. 16000 E. MICHIGAN AVE. ALBION, MI 49224 (517) 629-8838 casterconcepts.com	TOLERANCE SPECS.		UNLESS OTHERWISE SPECIFIED THE FOLLOWING TOLERANCES APPLY: .XX = ±.030 .XXX = ±.010 X° = ±1.0° PART TO BE FREE OF BURRS AND SHARP EDGES		DESCRIPTION:	61-08302-91-1HDLPTGSP		
	FINISH SPECS.		ZINC PLATING ON RIG, GRAY PAINT ON WHEEL CORE		PART/DRAWING NO.:	SP18121802HDLPTG	DATE:	3/27/2019
WHERE USED:							SCALE:	1:2 C-SIZE
CHECKED BY:	NEKIBUR R.		APPROVED BY:		DRAWN BY:	PRAVEEN K.	THIRD ANGLE	

NOTICE:THIS DRAWING AND DESIGN INFORMATION CONTAINED HEREIN SHALL REMAIN THE SOLE PROPERTY OF CASTER CONCEPTS INC. IT IS SUBMITTED FOR USE IN REFERENCE ONLY AND SHALL NOT BE DUPLICATED OR GIVEN TO A THIRD PARTY WITHOUT THE WRITTEN CONSENT OF CASTER CONCEPTS INC. THIS DRAWING MUST BE RETURNED TO CASTER CONCEPTS INC. UPON REQUEST AT ANY TIME. ACCEPTANCE OF THIS DRAWING SHALL BE CONSTRUED AS AN AGREEMENT OF THESE TERMS.