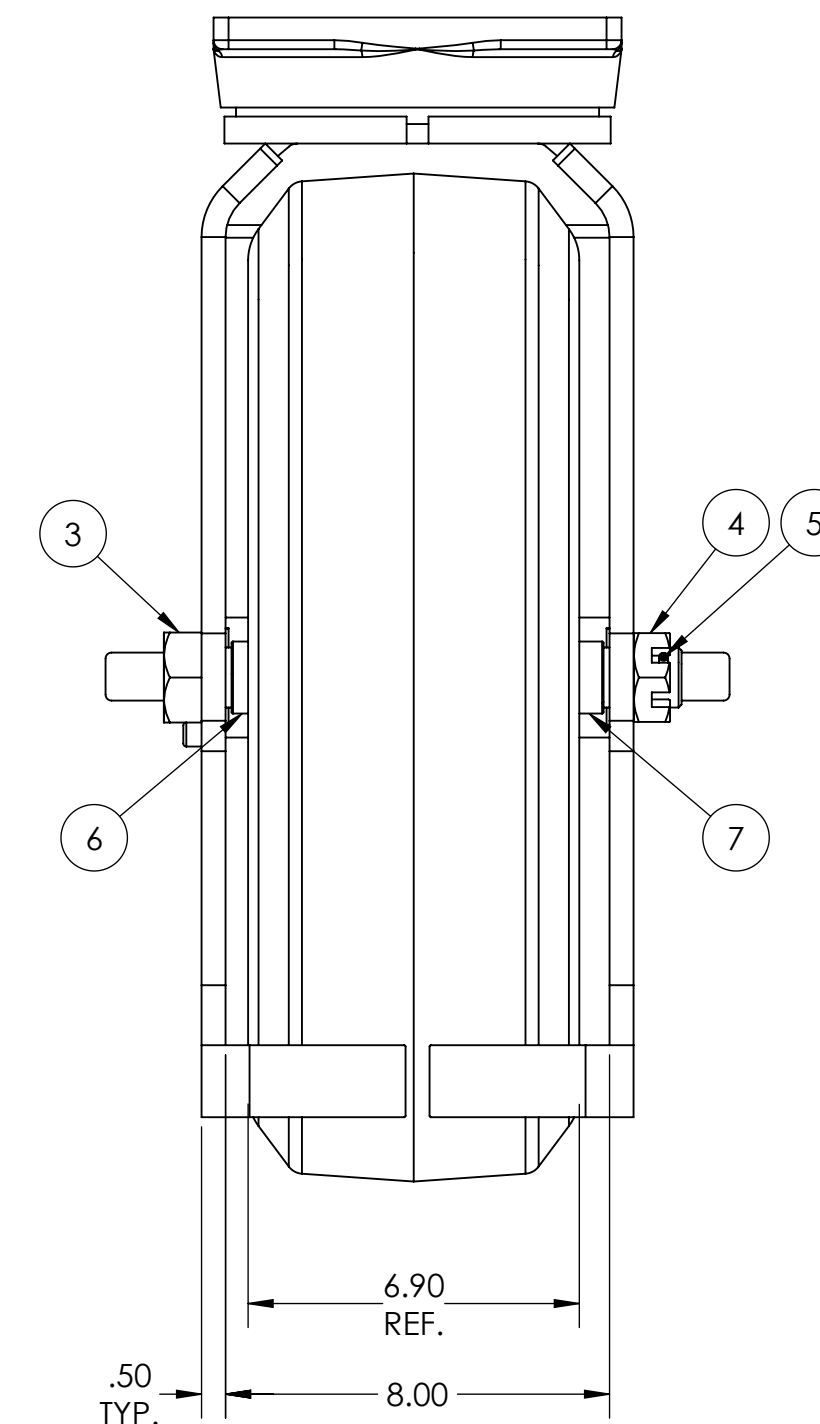
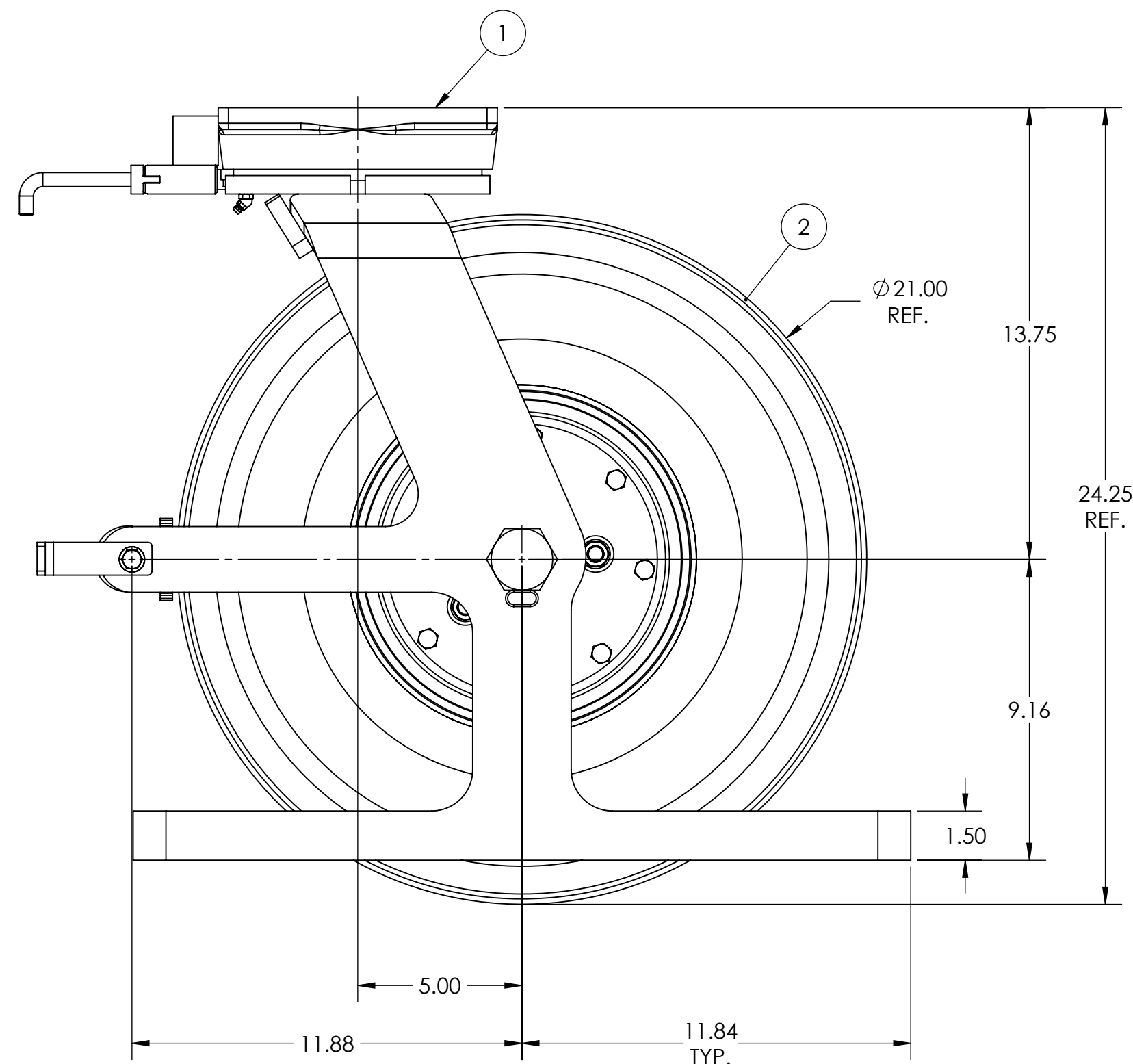
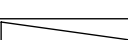




ITEM NO.	QTY.	PART/DRAWING NO.	DESCRIPTION	MATERIAL
1	1	91-21600-00-1HDLPTG	91 SER. 21.00 X 6.00 PNEU. SWL. RIG C/W HDSL, PCB & TG	MISC.
2	1	21609-76-20	21.00 PNEUMATIC WHEEL C/W 1.25 TB	MISC.
3	1	AX2016000	1-1/4-12 X 10 GRADE 5 HHCS	AISI 1038
4	1	SN201216	1-1/4 -12 SLOTTED JAM NUT ZINC PLATED	STEEL
5	1	KY032800	3/16 X 1-3/4 ROLL PIN	STEEL
6	1	SB202432	1.260 X 1-1/2 X 2 SPACER BUSHING	AISI 1026
7	1	SB202435	1.260 X 1-1/2 X 2 SPACER BUSHING	AISI 1026

NOTES:

1. CASTER IS RATED AS 2,420 LBS @ WALKING SPEEDS, INTERMITTENT USE.
2. ESTIMATED COF OF ROLLING RESISTANCE IS 5% OF LOAD TO START MOVING AND 2% OF LOAD TO MAINTAIN. (THIS IS FIGURING 2 SWIVEL AND 2 RIGID CASTERS ON SMOOTH, FLAT CONCRETE) APPLICATION AND FLOOR CONDITIONS WILL IMPACT THIS.
3. CASTER WEIGHT: 160.49LBS



<div></div> <div>CASTER CONCEPTS, INC.</div> <div>16000 E. MICHIGAN AVE. ALBION, MI 49224 (517) 629-8838 casterconcepts.com</div>		TOLERANCE SPECS.	UNLESS OTHERWISE SPECIFIED THE FOLLOWING TOLERANCES APPLY: .XX = ±.030 .XXX = ±.010 X° = ±1.0° PART TO BE FREE OF BURRS AND SHARP EDGES			DESCRIPTION:		91-21609-76-1HDLPTGSP			
						PART/DRAWING NO:		SP181228HDLPTG	DATE:	3/28/2019	
WHERE USED:		FINISH SPECS.	GOLD POWDER COAT ON RIG						SCALE:	1:4	C-SIZE
CHECKED BY:	NEKIBUR R.	MATERIAL SPECS.		APPROVED BY:		DRAWN BY	PRAVEEN K.		THIRD ANGLE		

NOTICE: THIS DRAWING AND DESIGN INFORMATION CONTAINED HEREIN SHALL REMAIN THE SOLE PROPERTY OF CASTER CONCEPTS INC. IT IS SUBMITTED FOR USE IN REFERENCE ONLY AND SHALL NOT BE DUPLICATED OR GIVEN TO A THIRD PARTY WITHOUT THE WRITTEN CONSENT OF CASTER CONCEPTS INC. THIS DRAWING MUST BE RETURNED TO CASTER CONCEPTS INC. UPON REQUEST AT ANY TIME. ACCEPTANCE OF THIS DRAWING SHALL BE CONSTRUED AS AN AGREEMENT OF THESE TERMS.