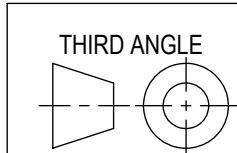
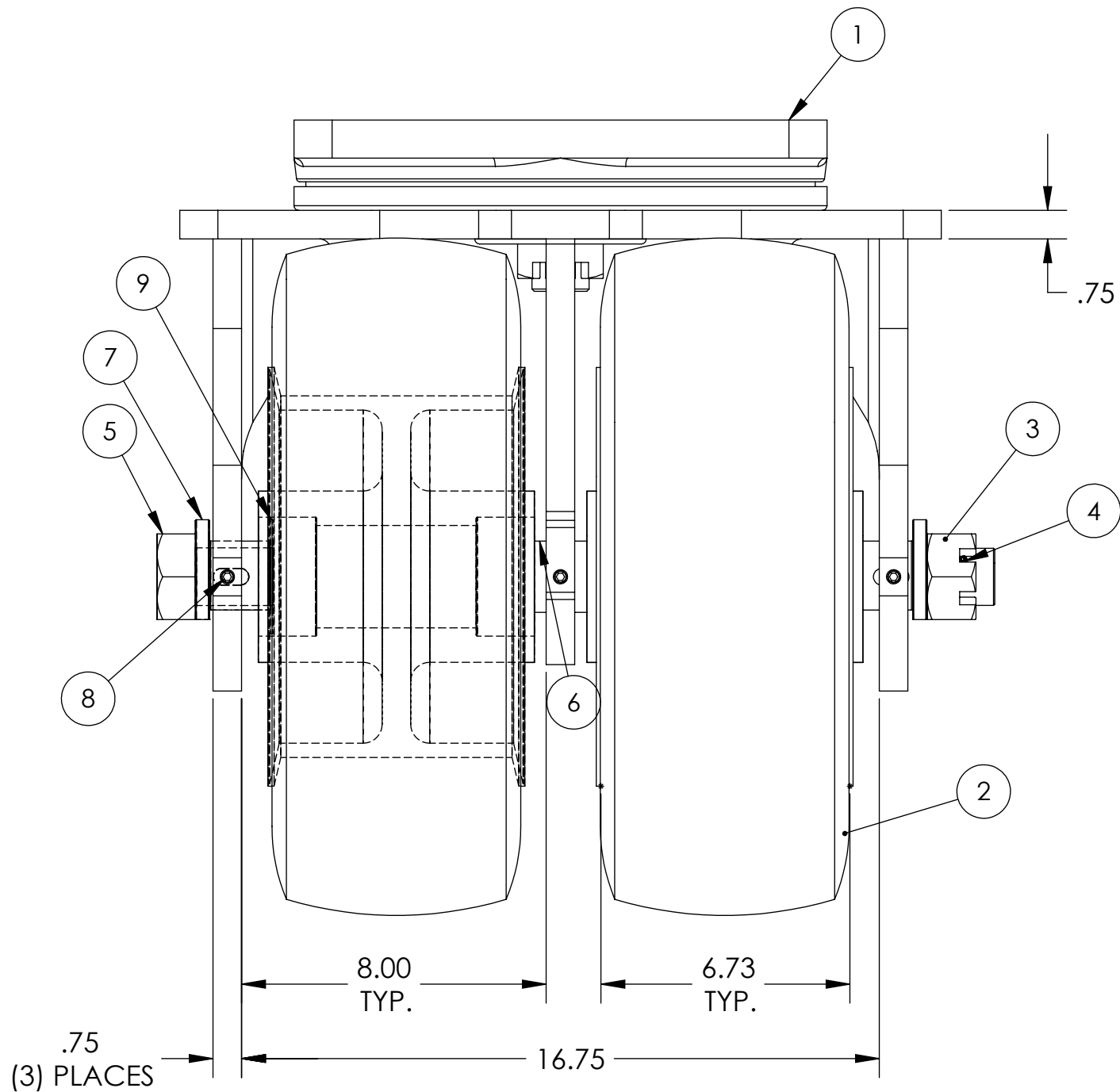
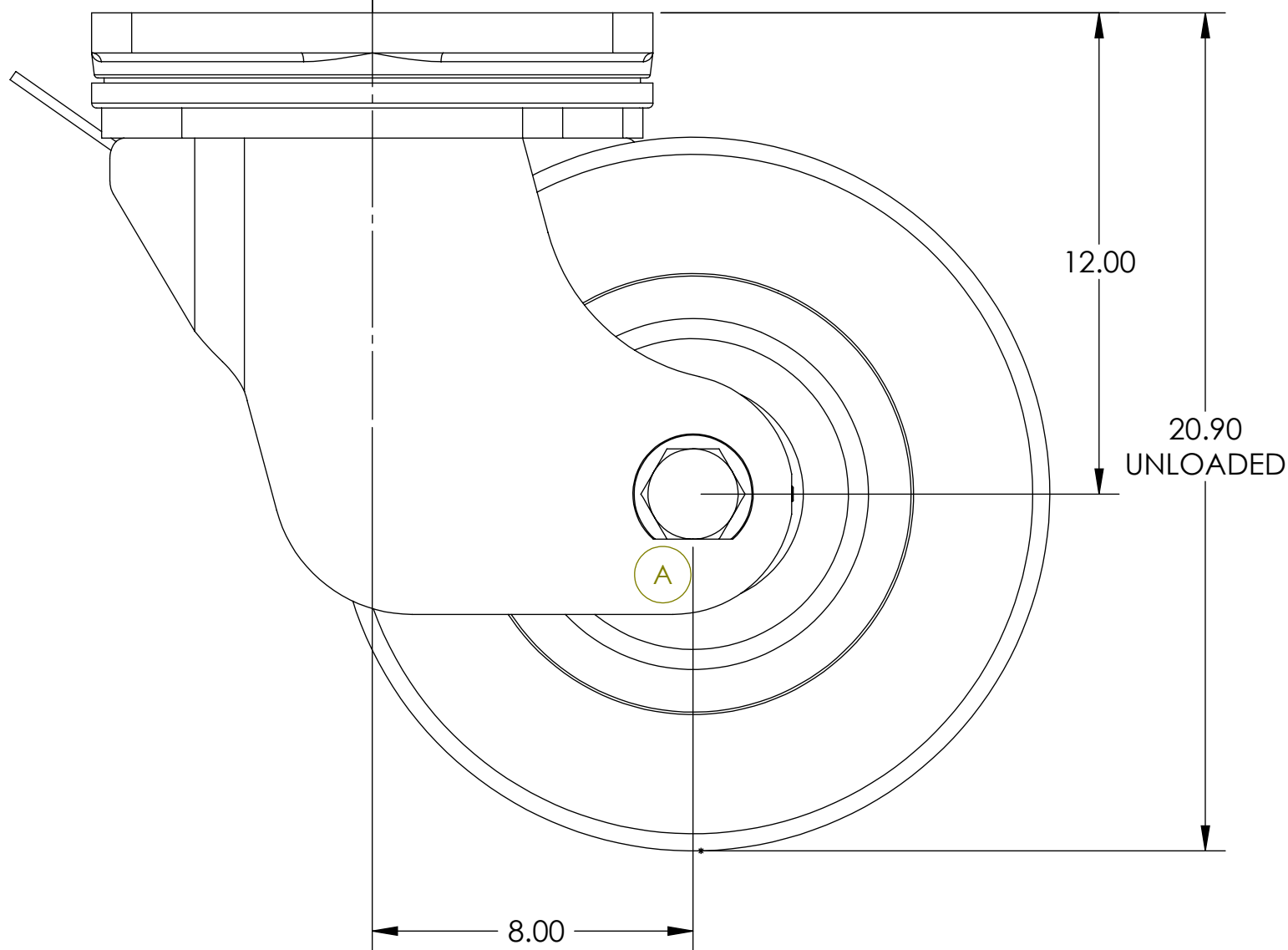


ITEM NO.	QTY.	PART/DRAWING NO.	DESCRIPTION	MATERIAL
1	1	SPD061006A	2-99-18700-00-1VSP	STEEL
2	2	18709-79-24FFSW	17.80 X 6.73 CONTINENTAL 180/70 R8 RV20 16 PLY PNEU. WHEEL C/W SEALED TB	(B)
3	1	SN241222	1 1/2-12 SLOTTED NUT ZINC PLATED	AISI 1038
4	1	KY032400	3/16 X 1-1/2 ROLL PIN	SPRING STEEL
5	1	AX2433600	1-1/2-12 X 21 AXLE	STRESS PROOF
6	2	SB243011	1.515 X 1.88 X .688 SPACER	AISI 1026
7	2	SPD061006H	1.515 X 1.875 X 1.59 SPECIAL TOP HAT SPACER	AISI 1026
8	3	SS061628	3/8-16 X 1-3/4 SET SCREW	ALLOY STEEL
9	4	WA244801	1.515 X 3 X .063 FLINGER WASHER	STEEL

NOTES:

- 1.) WHEELS ARE TO BE POLY FILLED TO 145 PSI.
- 2.) CASTER LOAD RATING = 10,000#.
- 3.) ESTIMATED COF OF ROLLING RESISTANCE IS 5% OF LOAD TO START MOVING AND 2% OF LOAD TO MAINTAIN. (THIS IS FIGURING 2 SWIVEL AND 2 RIGID CASTERS ON SMOOTH, FLAT CONCRETE) APPLICATION AND FLOOR CONDITIONS WILL IMPACT THIS



APPROVED BY	WHERE USED
BEN J. MILES	

FINISH SPECS.	MATERIAL SPECS.
BLACK PAINT ON RIG	

TOLERANCE SPECS.	
UNLESS OTHERWISE SPECIFIED THE FOLLOWING TOLERANCES APPLY:	
	.XX = $\pm .030$ .XXX = $\pm .010$
PART TO BE FREE OF BURRS AND SHARP EDGES	



DESCRIPTION: 2-99-18709-79-1VSP	
PART/DRAWING NO: SP18122101	
SCALE: 1:4 C-SIZE	DATE: 10-09-06
DRAWN BY: DOUG BACKINGER	

NOTICE: THIS DRAWING AND DESIGN INFORMATION CONTAINED HEREIN SHALL REMAIN THE SOLE PROPERTY OF CASTER CONCEPTS INC. IT IS SUBMITTED FOR USE IN REFERENCE ONLY AND SHALL NOT BE DUPLICATED OR GIVEN TO A THIRD PARTY WITHOUT THE WRITTEN CONSENT OF CASTER CONCEPTS INC. THIS DRAWING MUST BE RETURNED TO CASTER CONCEPTS INC. UPON REQUEST AT ANY TIME. ACCEPTANCE OF THIS DRAWING SHALL BE CONSTRUED AS AN AGREEMENT OF THESE TERMS.