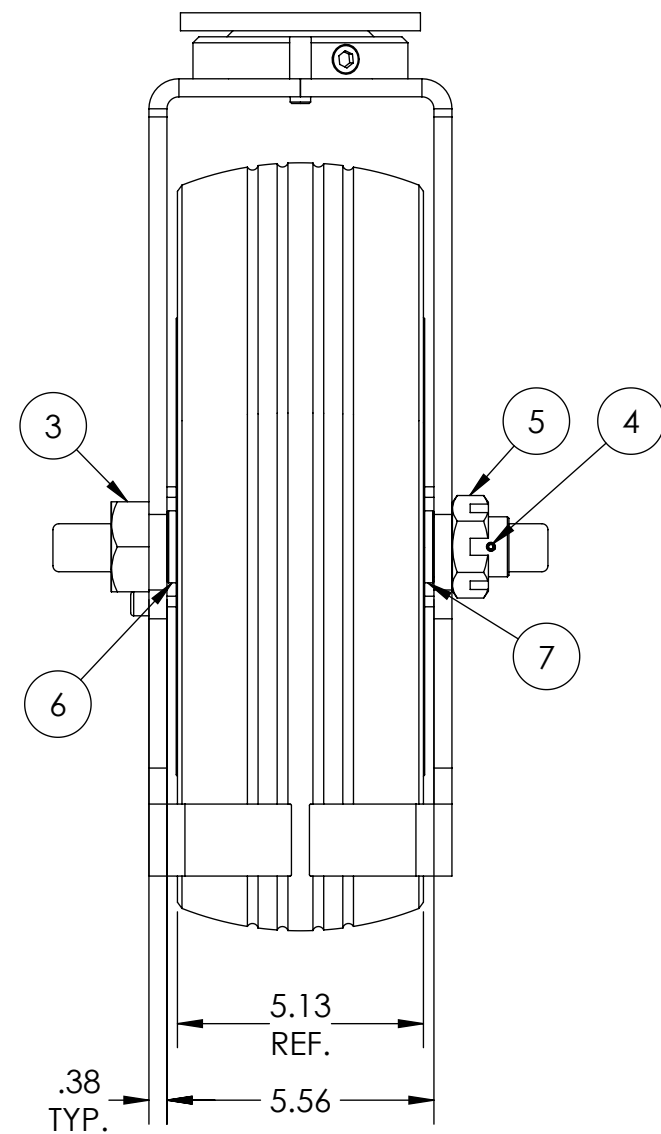
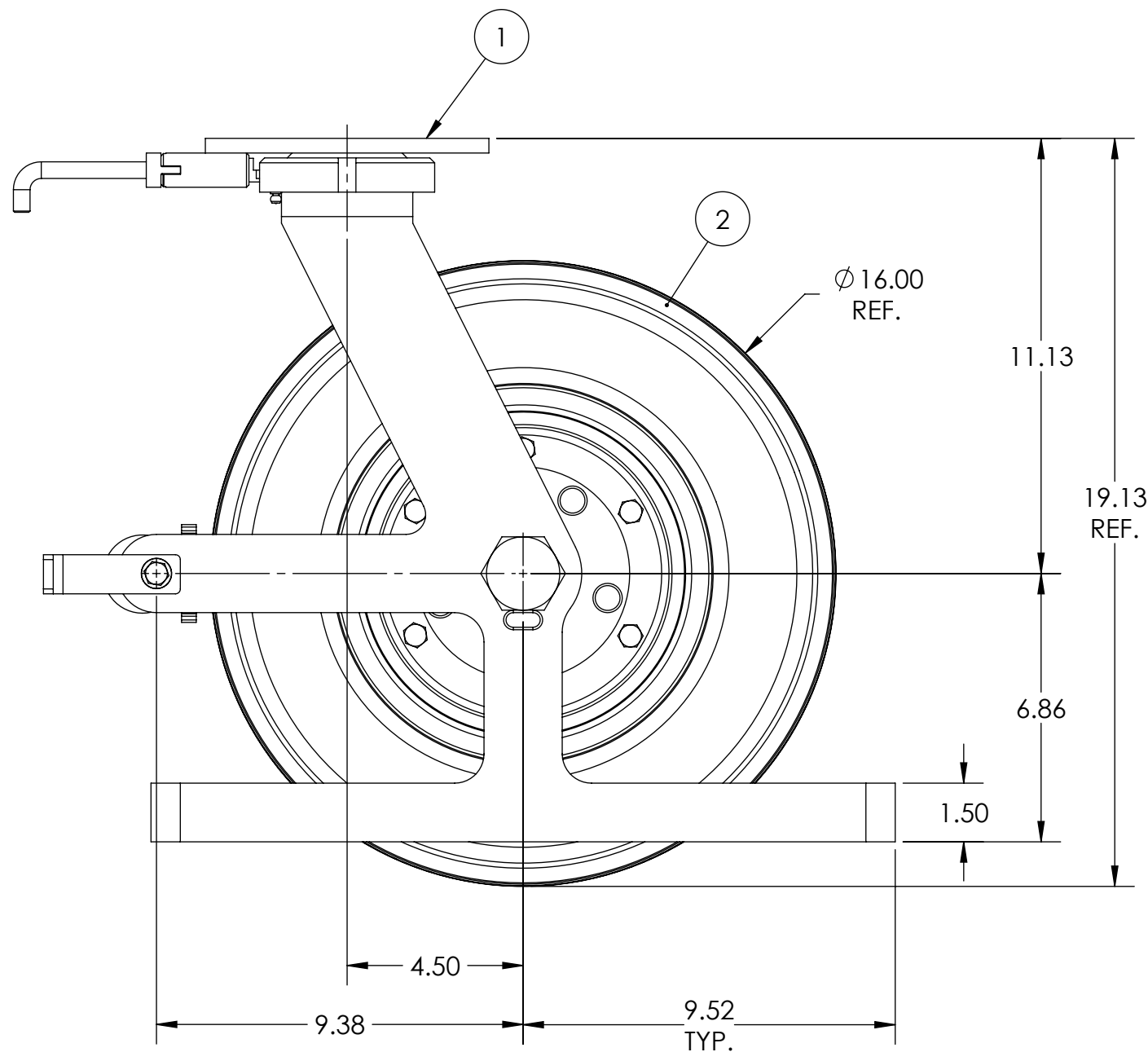
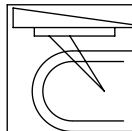


ITEM NO.	QTY.	PART/DRAWING NO.	DESCRIPTION	MATERIAL
1	1	71-16600-01-1HDLPTG	71 SER. 16.00 X 6.00 PNEU. SWL. RIG C/W HDSL, PCB & TG	MISC.
2	1	16509-78-20	Ø16.00 X 5.125 SOLID PNEUMATIC WHEEL	MISC.
3	1	AX201200	1.25-12 X 7.50 AXLE	AISI 1038
4	1	KY032800	3/16 X 1-3/4 ROLL PIN	STEEL
5	1	SN201216	1-1/4 -12 SLOTTED JAM NUT ZINC PLATED	STEEL
6	1	SB202412	1-1/4 X 1-1/2 X 3/4 SPACER	AISI 1026
7	1	SB202416	1-1/4 X 1-1/2 X 1 SPACER	SINTERED IRON

- NOTES:
- 1. CASTER IS RATED AS 2,900 LBS @ WALKING SPEEDS, INTERMITTENT USE.
 - 2. ESTIMATED COF OF ROLLING RESISTANCE IS 5% OF LOAD TO START MOVING AND 2% OF LOAD TO MAINTAIN.(THIS IS FIGURING 2 SWIVEL AND 2 RIGID CASTERS ON SMOOTH, FLAT CONCRETE) APPLICATION AND FLOOR CONDITIONS WILL IMPACT THIS.
 - 3. CASTER WEIGHT: 75.71LBS



 CASTER
CONCEPTS, INC.
16000 E. MICHIGAN AVE.
ALBION, MI 49224
(517) 629-8838
casterconcepts.com

WHERE USED:
CHECKED BY: NEKIBUR R.

TOLERANCE SPECS.

FINISH SPECS.

MATERIAL SPECS.

UNLESS OTHERWISE SPECIFIED THE FOLLOWING TOLERANCES APPLY:
.XX = ±.030 .XXX = ±.010 X° = ±1.0°
PART TO BE FREE OF BURRS AND SHARP EDGES

ZINC PLATING ON RIG

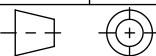
APPROVED BY:

DESCRIPTION: 71-16509-78-1HDLPTGSP

PART/DRAWING NO: SP181220HDLPTG

DATE: 4/1/2019
SCALE: 1:4 C-SIZE
DRAWN BY: PRAVEEN K.

THIRD ANGLE



NOTICE:THIS DRAWING AND DESIGN INFORMATION CONTAINED HEREIN SHALL REMAIN THE SOLE PROPERTY OF CASTER CONCEPTS INC. IT IS SUBMITTED FOR USE IN REFERENCE ONLY AND SHALL NOT BE DUPLICATED OR GIVEN TO A THIRD PARTY WITHOUT THE WRITTEN CONSENT OF CASTER CONCEPTS INC. THIS DRAWING MUST BE RETURNED TO CASTER CONCEPTS INC. UPON REQUEST AT ANY TIME. ACCEPTANCE OF THIS DRAWING SHALL BE CONSTRUED AS AN AGREEMENT OF THESE TERMS.