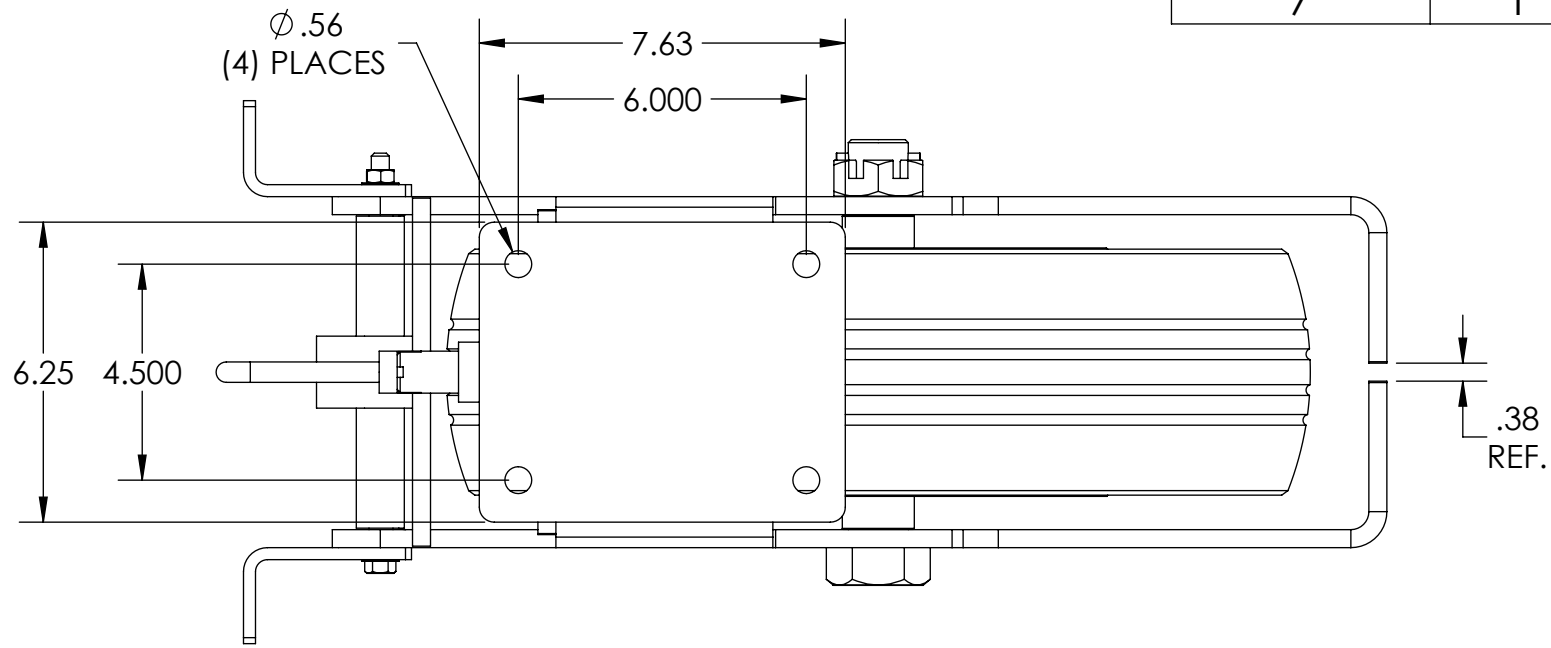
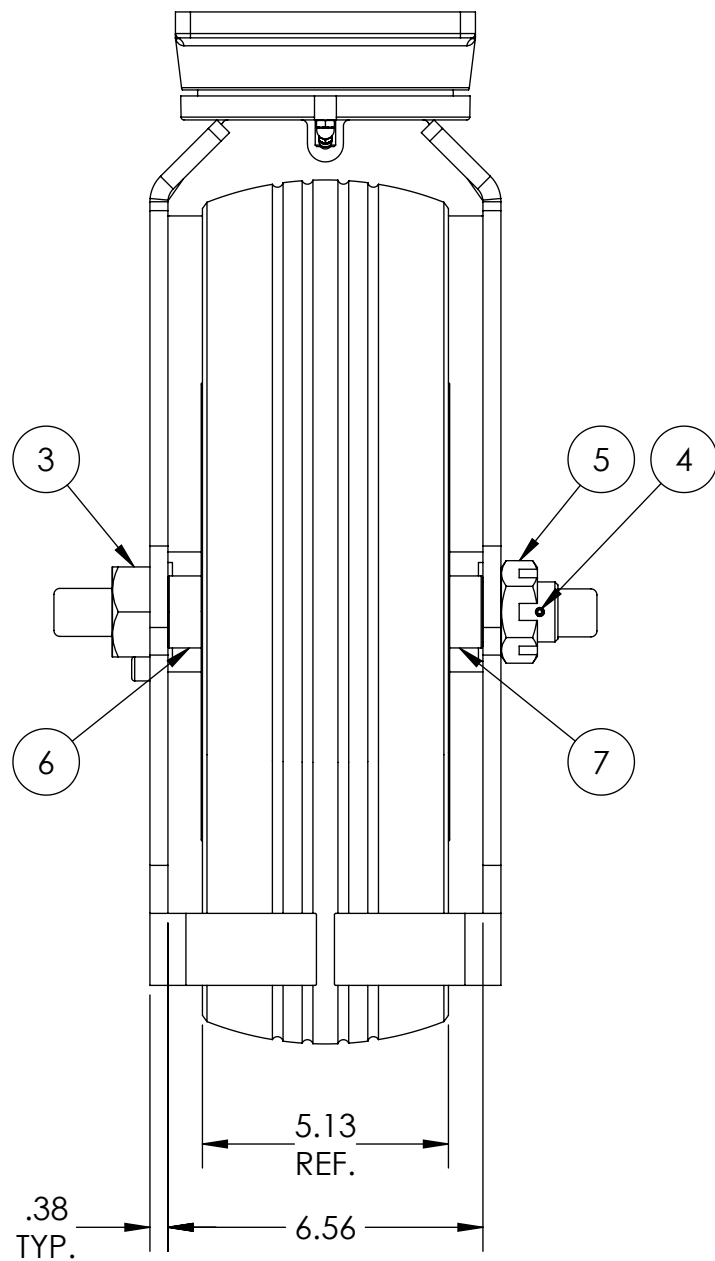
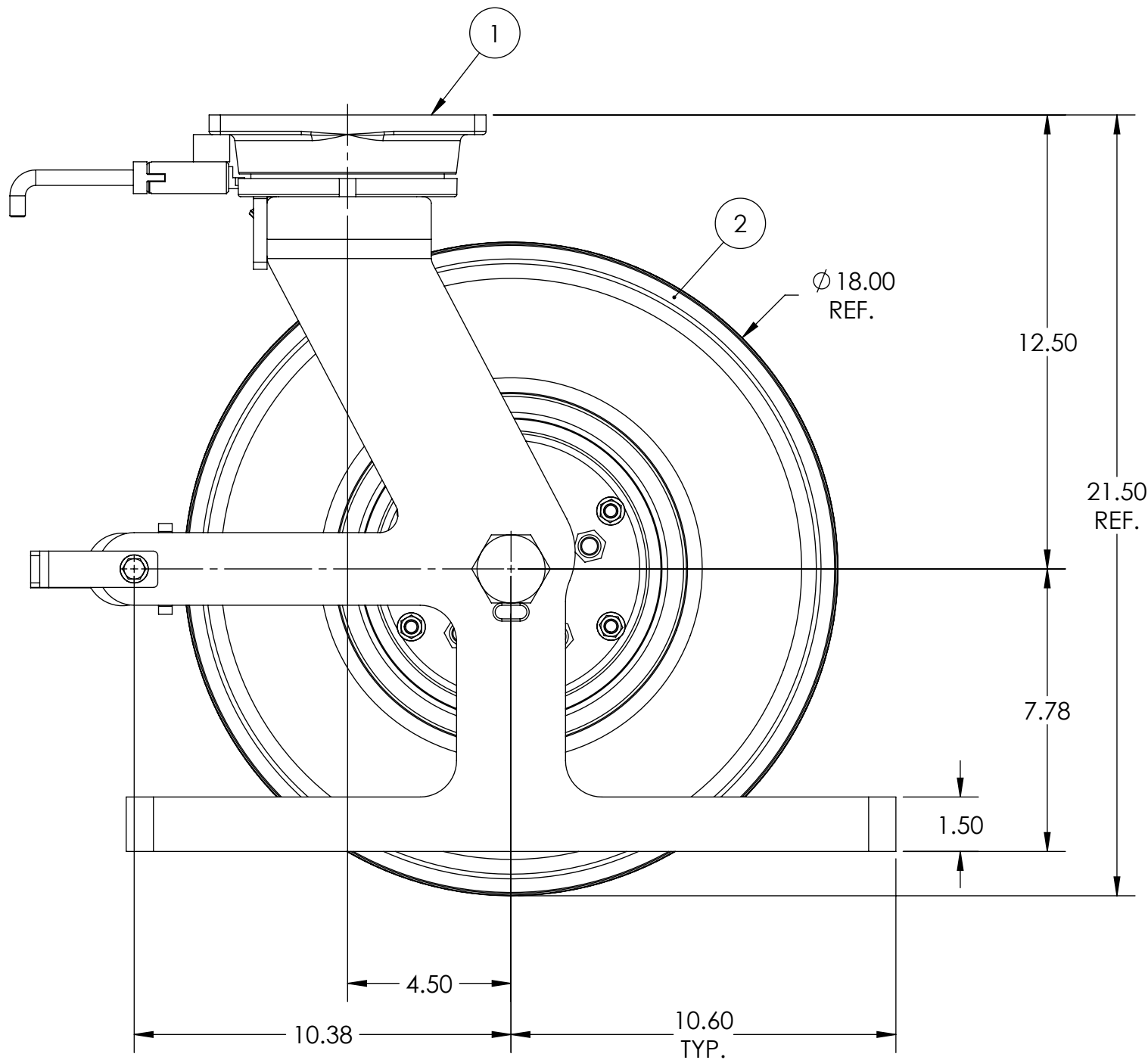
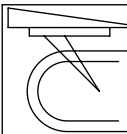
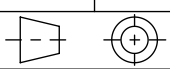


ITEM NO.	QTY.	PART/DRAWING NO.	DESCRIPTION	MATERIAL
1	1	81-18600-01-1HDLPPTG	81 SER. 18.00 X 6.00 PNEU. SWL. RIG C/W HDSL, PCB & TG	MISC.
2	1	18509-78-20	Ø18.00 X 5.125 SOLID PNEUMATIC WHEEL	MISC.
3	1	AX2013600	1-1/4-12 X 8-1/2 GRADE 5 HHCS	AISI 1038
4	1	KY032800	3/16 X 1-3/4 ROLL PIN	STEEL
5	1	SN201216	1-1/4 -12 SLOTTED JAM NUT ZINC PLATED	STEEL
6	1	SB202424	1-1/4 X 1-1/2 X 1-1/2 SPACER	AISI 1026
7	1	SB202420	1-1/4 X 1-1/2 X 1-1/4 SPACER	AISI 1026



- NOTES:
1. CASTER IS RATED AS 3,300 LBS @ WALKING SPEEDS, INTERMITTENT USE.
  2. ESTIMATED COF OF ROLLING RESISTANCE IS 5% OF LOAD TO START MOVING AND 2% OF LOAD TO MAINTAIN. (THIS IS FIGURING 2 SWIVEL AND 2 RIGID CASTERS ON SMOOTH, FLAT CONCRETE) APPLICATION AND FLOOR CONDITIONS WILL IMPACT THIS.
  3. CASTER WEIGHT: 93.72LBS



 <b>CASTER CONCEPTS, INC.</b> 16000 E. MICHIGAN AVE. ALBION, MI 49224 (517) 629-8838 casterconcepts.com		<b>TOLERANCE SPECS.</b> .XX = ±.030 .XXX = ±.010 X° = ±1.0° PART TO BE FREE OF BURRS AND SHARP EDGES		<b>DESCRIPTION:</b> 81-18509-78-1HDLPPTGSP	
				<b>PART/DRAWING NO:</b> SP18121203HDLPPTG	<b>DATE:</b> 3/29/2019
<b>WHERE USED:</b>		<b>FINISH SPECS.</b>	ZINC PLATING ON RIG	<b>SCALE:</b>	1:4 C-SIZE
<b>CHECKED BY:</b>	NEKIBUR R.	<b>MATERIAL SPECS.</b>		<b>APPROVED BY:</b>	
		<b>DRAWN BY</b> PRAVEEN K.		<b>THIRD ANGLE</b>	

NOTICE:THIS DRAWING AND DESIGN INFORMATION CONTAINED HEREIN SHALL REMAIN THE SOLE PROPERTY OF CASTER CONCEPTS INC. IT IS SUBMITTED FOR USE IN REFERENCE ONLY AND SHALL NOT BE DUPLICATED OR GIVEN TO A THIRD PARTY WITHOUT THE WRITTEN CONSENT OF CASTER CONCEPTS INC. THIS DRAWING MUST BE RETURNED TO CASTER CONCEPTS INC. UPON REQUEST AT ANY TIME. ACCEPTANCE OF THIS DRAWING SHALL BE CONSTRUED AS AN AGREEMENT OF THESE TERMS.