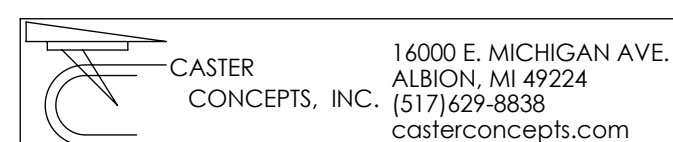
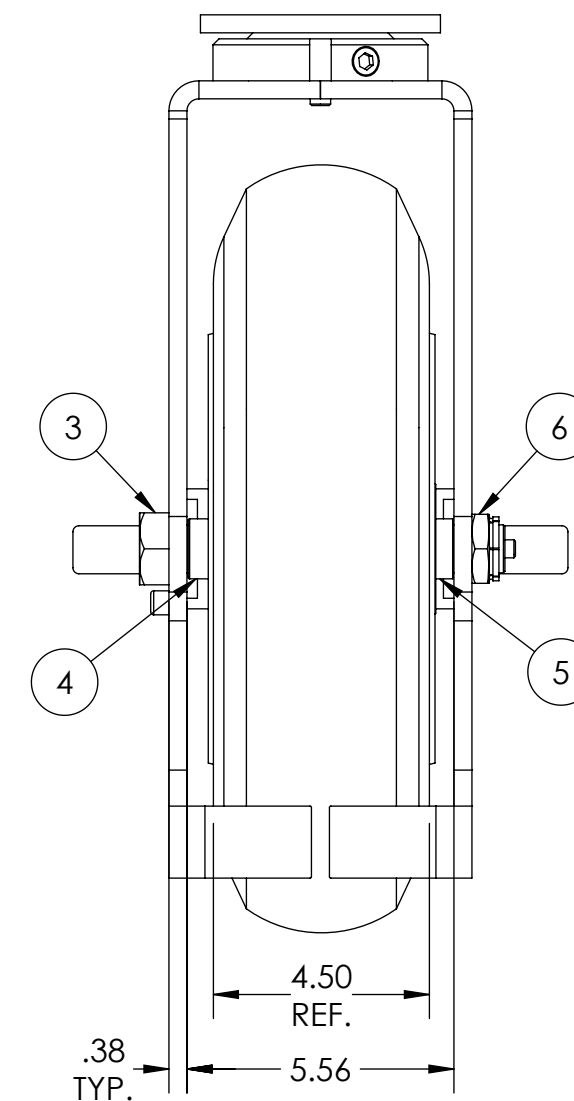
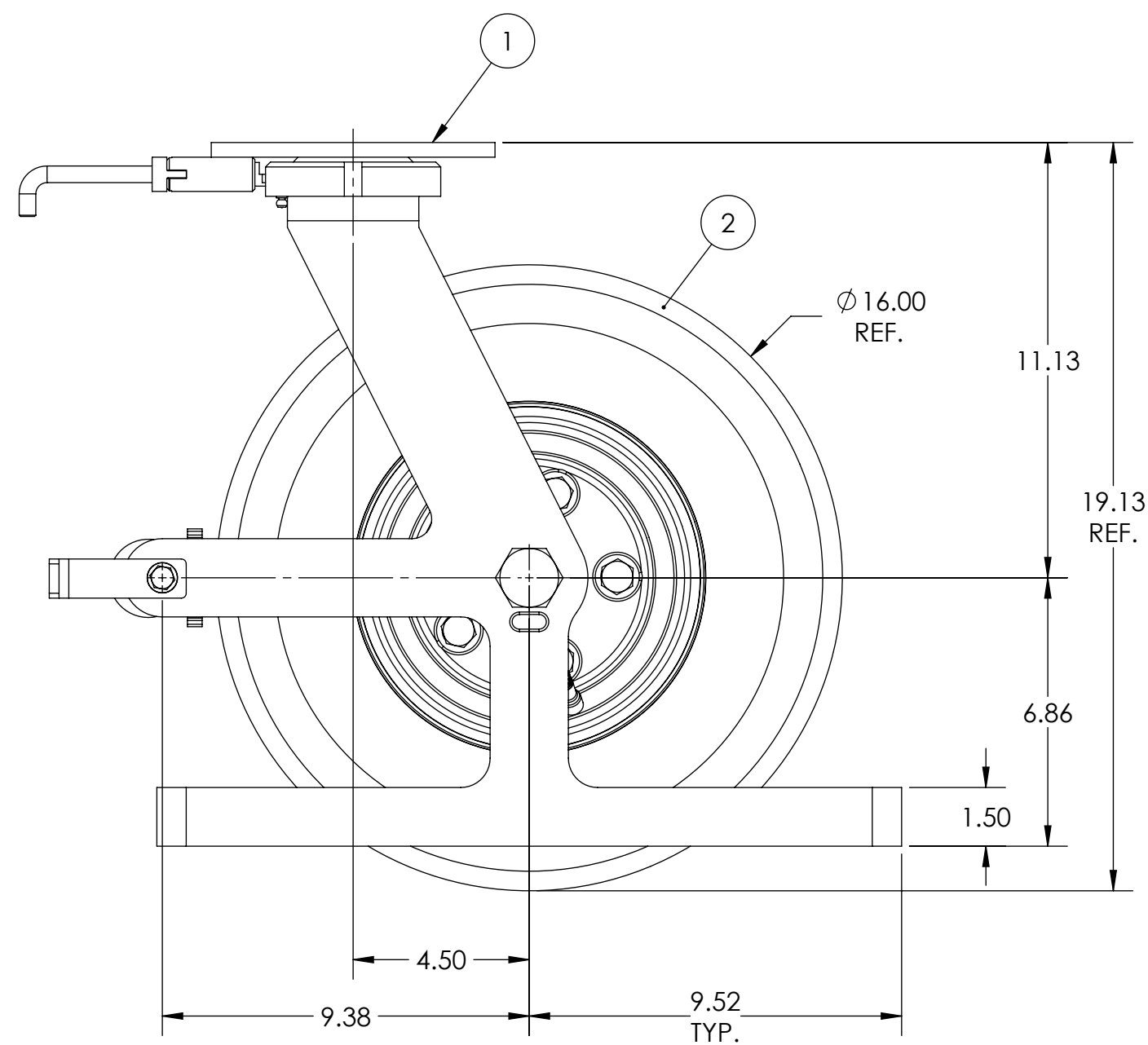




ITEM NO.	QTY.	PART/DRAWING NO.	DESCRIPTION	MATERIAL
1	1	71-16600-00-1HDLPTG	71 SER. 16.00 X 6.00 PNEU. SWL. RIG C/W HDSL & PCB	MISC.
2	1	16609-76-16	4.80/8 PNEUMATIC WHEEL C/W 1.00 TB	MISC.
3	1	AX1611200	1-14 X 7 GRADE 5 HHCS	AISI 1038
4	1	SB162020	1.010 ID X 1.25 OD X 1.25 LGT SPACER	AISI 1026
5	1	SB162012	1.01 ID X 1.25 OD X 0.75 LGT, SPACER	AISI 1026 DOM
6	1	LN161413	1"-14 LOW HEIGHT FLEXLOC NUT	STEEL

NOTES:

1. CASTER IS RATED AS 1,230 LBS @ WALKING SPEEDS, INTERMITTENT USE.
2. ESTIMATED COF OF ROLLING RESISTANCE IS 5% OF LOAD TO START MOVING AND 2% OF LOAD TO MAINTAIN. (THIS IS FIGURING 2 SWIVEL AND 2 RIGID CASTERS ON SMOOTH, FLAT CONCRETE) APPLICATION AND FLOOR CONDITIONS WILL IMPACT THIS.
3. CASTER WEIGHT: 62.75LBS



WHERE USED:
CHECKED BY: NEKIBUR R.

TOLERANCE SPECS.	UNLESS OTHERWISE SPECIFIED THE FOLLOWING TOLERANCES APPLY: .XX = ±.030 .XXX = ±.010 X° = ±1.0° PART TO BE FREE OF BURRS AND SHARP EDGES			DESCRIPTION:	71-16609-76-1HDLPTGSP				
				PART/DRAWING NO:	SP18121103HDLPTG	DATE:	3/28/2019		
FINISH SPECS.	ZINC PLATING ON RIG						SCALE:	1:4	C-SIZE
MATERIAL SPECS.		APPROVED BY:		DRAWN BY	PRAVEEN K.	THIRD ANGLE			

NOTICE: THIS DRAWING AND DESIGN INFORMATION CONTAINED HEREIN SHALL REMAIN THE SOLE PROPERTY OF CASTER CONCEPTS INC. IT IS SUBMITTED FOR USE IN REFERENCE ONLY AND SHALL NOT BE DUPLICATED OR GIVEN TO A THIRD PARTY WITHOUT THE WRITTEN CONSENT OF CASTER CONCEPTS INC. THIS DRAWING MUST BE RETURNED TO CASTER CONCEPTS INC. UPON REQUEST AT ANY TIME. ACCEPTANCE OF THIS DRAWING SHALL BE CONSTRUED AS AN AGREEMENT OF THESE TERMS.