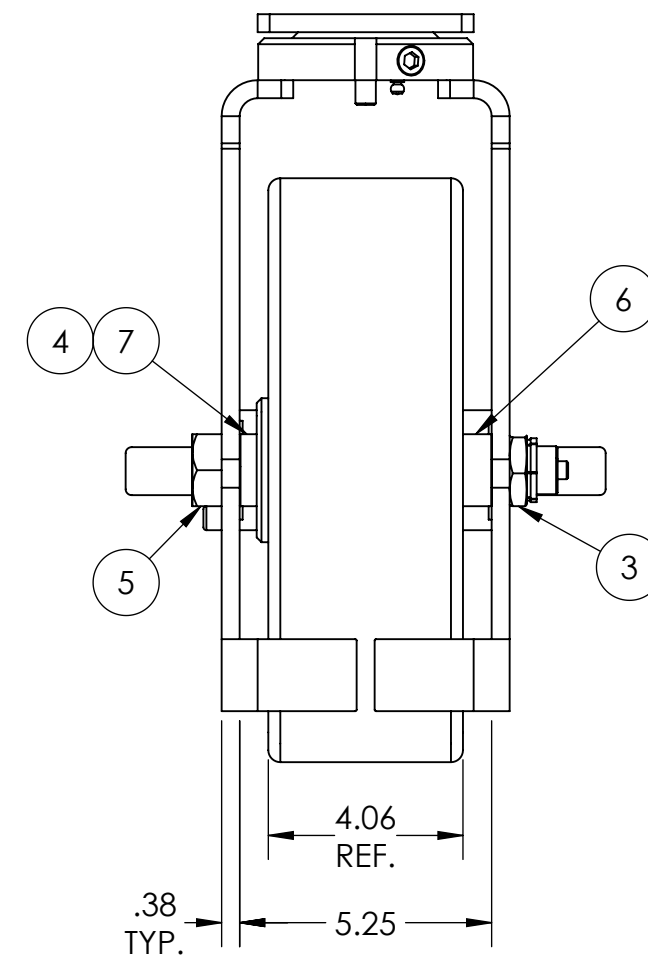
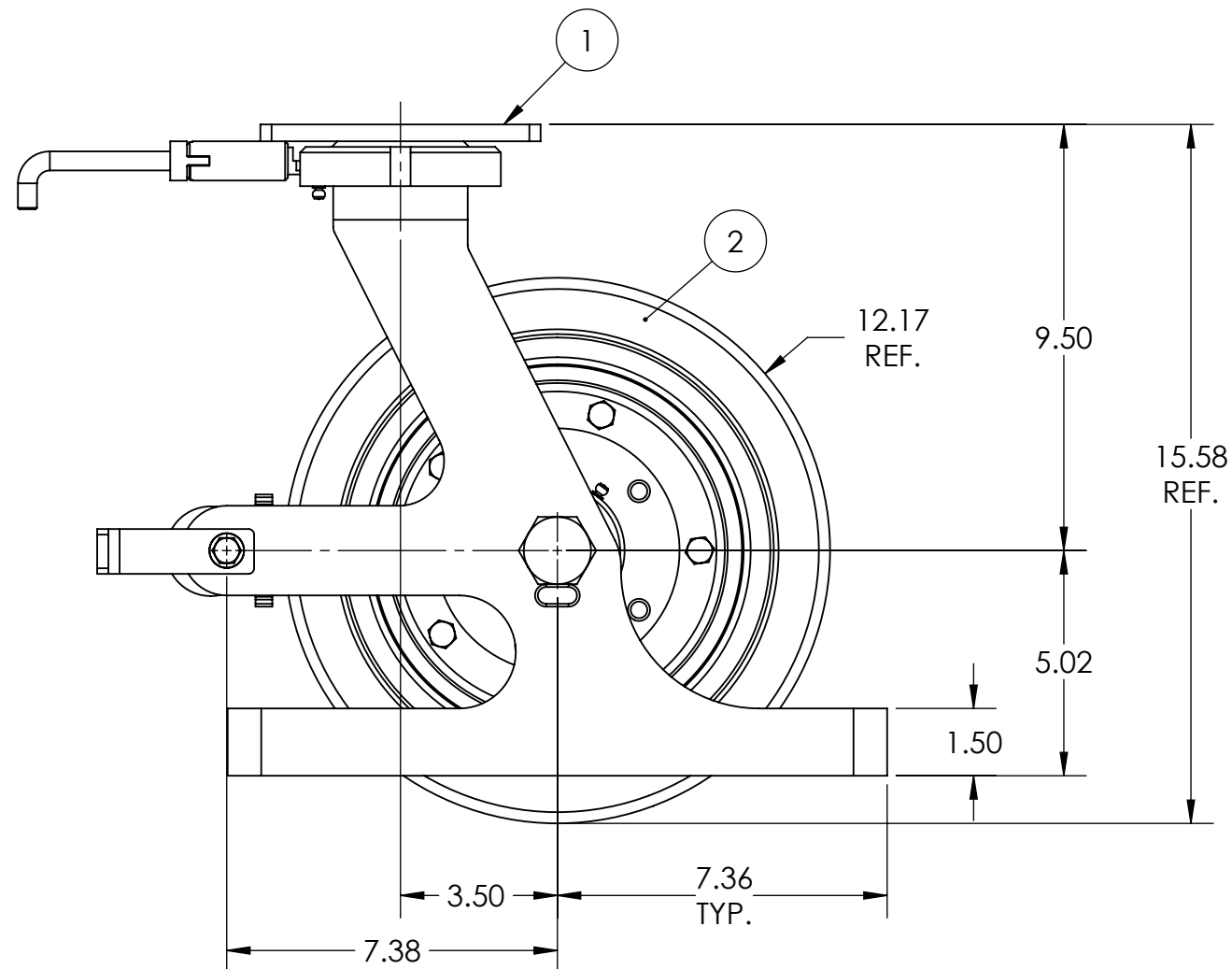

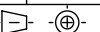


ITEM NO.	QTY.	PART/DRAWING NO.	DESCRIPTION	MATERIAL
1	1	61-12400-01-1HDLPTG	61 SER. 12.00 X 4.00 PNEU. SWL. RIG C/W HDL, PCB, & TG (1" AXLE)	MISC.
2	1	12409-78-20	Ø12.00 X 4.00 SOLID PNEUMATIC WHEEL (2.00-8)	MISC.
3	1	LN161413	1"-14 LOW HEIGHT FLEXLOC NUT	STEEL
4	1	SB162080	1.00 X 1-1/4 X 5.00 SPACER	AISI 1026
5	1	AX1611200	1-14 X 7 GRADE 5 HHCS	AISI 1038
6	1	SB202413	1-1/4 X 1-1/2 X .885 SPACER	AISI 1026
7	1	SB202410	1-1/4 X 1-1/2 X 7/16 SPACER	AISI 1026

NOTES:

1. CASTER IS RATED AS 1,200 LBS @ WALKING SPEEDS, INTERMITTENT USE.
2. ESTIMATED COF OF ROLLING RESISTANCE IS 5% OF LOAD TO START MOVING AND 2% OF LOAD TO MAINTAIN. (THIS IS FIGURING 2 SWIVEL AND 2 RIGID CASTERS ON SMOOTH, FLAT CONCRETE) APPLICATION AND FLOOR CONDITIONS WILL IMPACT THIS.
3. CASTER WEIGHT: 51.11LBS



 CASTER CONCEPTS, INC. 16000 E. MICHIGAN AVE. ALBION, MI 49224 (517)629-8838 casterconcepts.com	TOLERANCE SPECS.	UNLESS OTHERWISE SPECIFIED THE FOLLOWING TOLERANCES APPLY: .XX = ±.030 .XXX = ±.010 X° = ±1.0° PART TO BE FREE OF BURRS AND SHARP EDGES		DESCRIPTION:	61-12409-78-1HDLPTGSP				
				PART / DRAWING NO:	SP18120201HDLPTG		DATE:	1/4/2019	
WHERE USED:	FINISH SPECS.	ZINC PLATING ON RIG				SCALE:	1:4		B-SIZE
CHECKED BY:	NEKIBUR R.	MATERIAL SPECS.	APPROVED BY:		DRAWN BY:		PRAVEEN K.		THIRD ANGLE 

NOTICE: THIS DRAWING AND DESIGN INFORMATION CONTAINED HEREIN SHALL REMAIN THE SOLE PROPERTY OF CASTER CONCEPTS INC. IT IS SUBMITTED FOR USE IN REFERENCE ONLY AND SHALL NOT BE DUPLICATED OR GIVEN TO A THIRD PARTY WITHOUT THE WRITTEN CONSENT OF CASTER CONCEPTS INC. THIS DRAWING MUST BE RETURNED TO CASTER CONCEPTS INC. UPON REQUEST AT ANY TIME. ACCEPTANCE OF THIS DRAWING SHALL BE CONSTRUED AS AN AGREEMENT OF THESE TERMS.