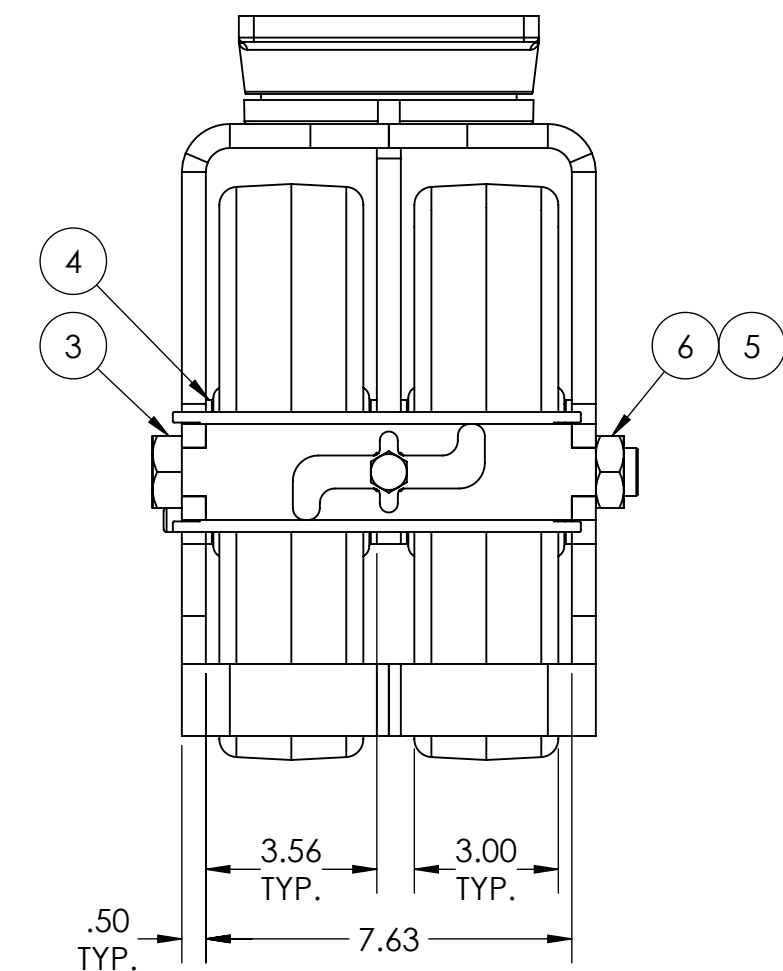
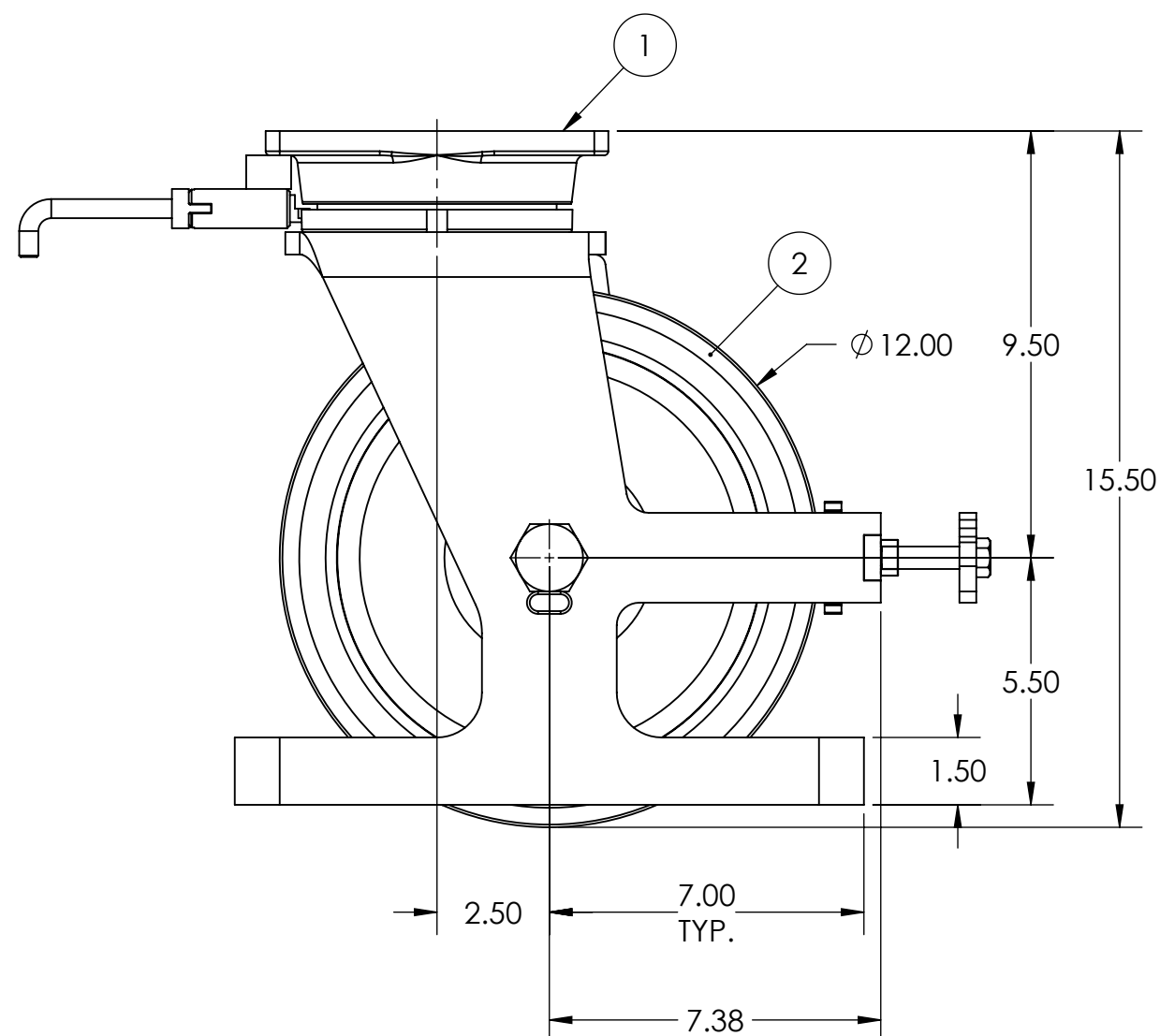
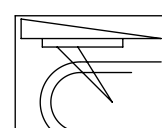


ITEM NO.	QTY.	PART/DRAWING NO.	DESCRIPTION	MATERIAL
1	1	SP181217A	2-81-12300-00-1HDLFTGSP	MISC.
2	2	SP181217B	12301-32-20SP	MISC.
3	1	AX1615200	1"-14 X 9-1/2 GRADE 5 HHCS	AISI 1038
4	4	WA204800	1-1/4 X 3 X 1/8 THRUST WASHER	STEEL
5	2	SB162057	1 X 1-1/4 X 3-9/16 SPANNER	AISI 1026
6	1	LN161412	1-14 FIN HX JAM CENLCK NUT-ZINC	STEEL

NOTES:

1. RIG AND WHEEL ARE TO BE GREASED WITH MEGATHERM HIGH TEMP GREASE.
2. CASTER IS RATED AS 5,200 LBS @ WALKING SPEEDS, INTERMITTENT USE.
3. ESTIMATED COF OF ROLLING RESISTANCE IS 2% OF LOAD TO START MOVING AND 1% OF LOAD TO MAINTAIN.(THIS IS FIGURING 2 SWIVEL AND 2 RIGID CASTERS ON SMOOTH, FLAT CONCRETE) APPLICATION AND FLOOR CONDITIONS WILL IMPACT THIS.
4. MAXIMUM TEMP RATING IS 425° F.
5. CASTER WEIGHT: 72.25LBS



 CASTER CONCEPTS, INC. 16000 E. MICHIGAN AVE. ALBION, MI 49224 (517) 629-8838 casterconcepts.com		TOLERANCE SPECS. .XX = ±.030 .XXX = ±.010 X° = ±1.0° PART TO BE FREE OF BURRS AND SHARP EDGES		DESCRIPTION: 2-81-12301-32-1HDLFTGSP	
				PART/DRAWING NO:	SP181217HDLFTG
WHERE USED:		FINISH SPECS.	GOLD POWDER COAT ON RIG		
CHECKED BY:	NEKIBUR R.	MATERIAL SPECS.		APPROVED BY:	
		DRAWN BY		PRAVEEN K.	THIRD ANGLE
				SCALE:	1:4 C-SIZE

NOTICE:THIS DRAWING AND DESIGN INFORMATION CONTAINED HEREIN SHALL REMAIN THE SOLE PROPERTY OF CASTER CONCEPTS INC. IT IS SUBMITTED FOR USE IN REFERENCE ONLY AND SHALL NOT BE DUPLICATED OR GIVEN TO A THIRD PARTY WITHOUT THE WRITTEN CONSENT OF CASTER CONCEPTS INC. THIS DRAWING MUST BE RETURNED TO CASTER CONCEPTS INC. UPON REQUEST AT ANY TIME. ACCEPTANCE OF THIS DRAWING SHALL BE CONSTRUED AS AN AGREEMENT OF THESE TERMS.