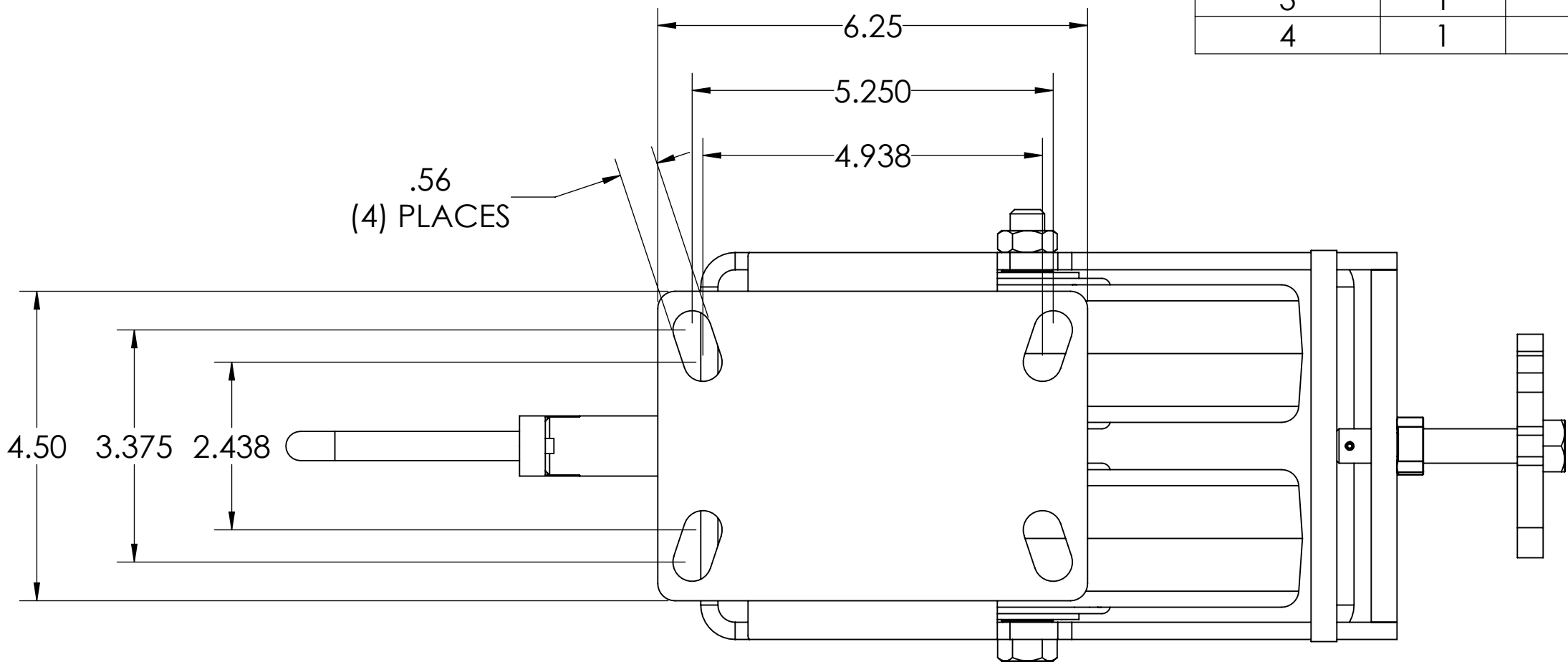
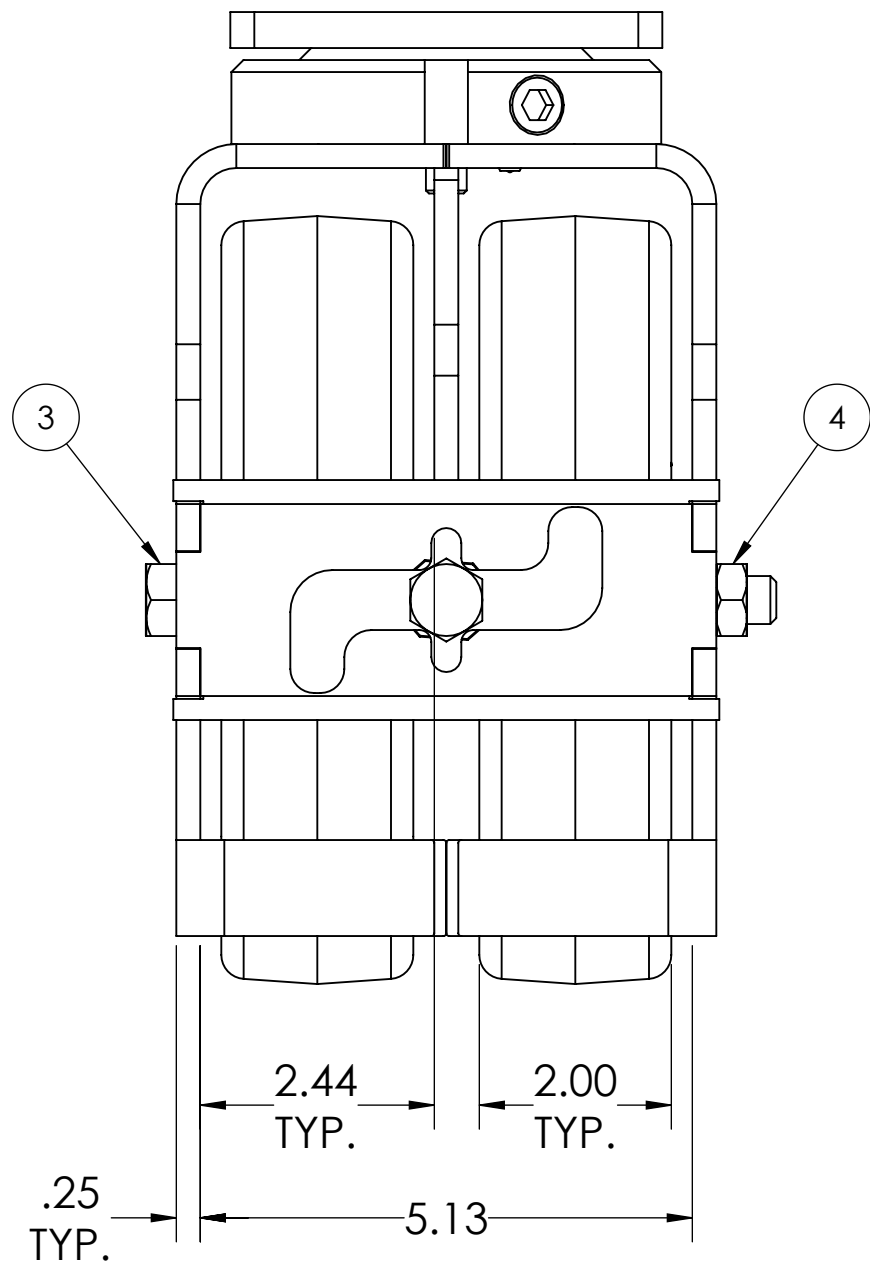
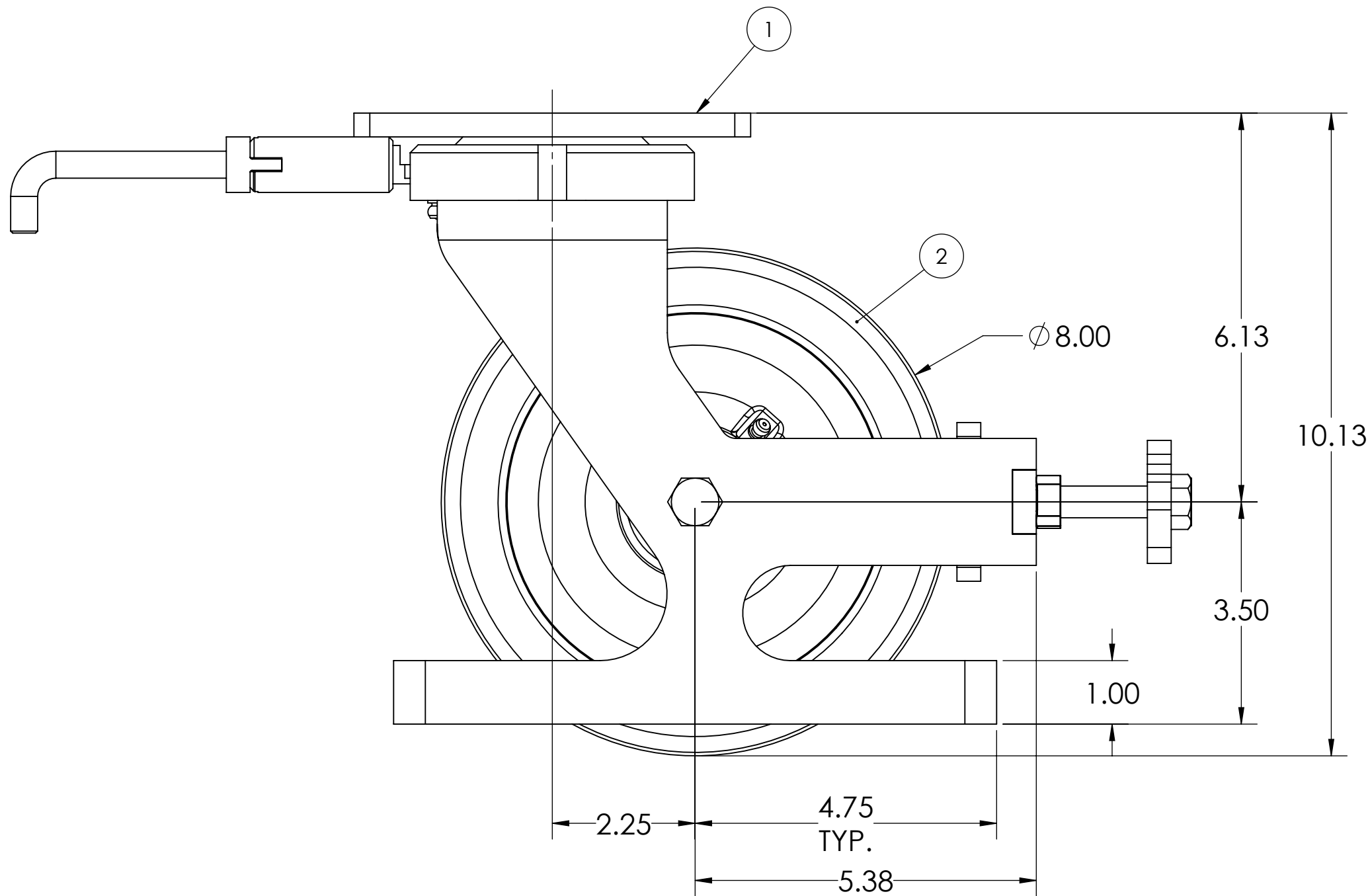
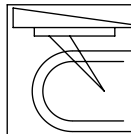
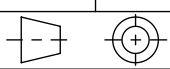


ITEM NO.	QTY.	PART/DRAWING NO.	DESCRIPTION	MATERIAL
1	1	SP18121001A	2-61-08200-00-1HDLFTGSP	MISC.
2	2	SPD160818A	08201-32-12SP	MISC.
3	1	AX0810000	1/2-20 X 6-1/4 GRADE 5 HHCS ZINC	AISI 1038
4	1	LN08200	1/2-20 TOP LOCK NUT	AISI 1038



- NOTES:
1. RIG AND WHEEL ARE TO BE GREASED WITH MEGATHERM HIGH TEMP GREASE.
 2. CASTER RATINGS:
 1. TEMPERATURE TO NOT EXCEED 425° FOR 12 HOURS MAXIMUM
 2. LOAD: 8,100 LBS EVENLY LOADED OVER 12 CASTERS
 3. SAFETY FACTOR: 2
 4. CASTER IS RATED AS 675 LBS @ WALKING SPEEDS, INTERMITTENT USE.
 5. ESTIMATED COF OF ROLLING RESISTANCE IS 2% OF LOAD TO START MOVING AND 1% OF LOAD TO MAINTAIN. (THIS IS FIGURING 2 SWIVEL AND 2 RIGID CASTERS ON SMOOTH, FLAT CONCRETE) APPLICATION AND FLOOR CONDITIONS WILL IMPACT THIS.
 6. MAXIMUM TEMP RATING IS 425° F.
 7. CASTER WEIGHT: 25.77LBS



 CASTER CONCEPTS, INC. 16000 E. MICHIGAN AVE. ALBION, MI 49224 (517) 629-8838 casterconcepts.com		TOLERANCE SPECS. .XX = ±.030 .XXX = ±.010 X° = ±1.0° PART TO BE FREE OF BURRS AND SHARP EDGES	UNLESS OTHERWISE SPECIFIED THE FOLLOWING TOLERANCES APPLY:		DESCRIPTION: 2-61-08201-32-1HDLFTGSP	
			FINISH SPECS. ZINC PLATING ON RIG		PART/DRAWING NO.: SP18121001HDLFTG	DATE: 3/29/2019
WHERE USED:		MATERIAL SPECS.		APPROVED BY:	DRAWN BY: PRAVEEN K.	SCALE: 1:2 C-SIZE
CHECKED BY: NEKIBUR R.					THIRD ANGLE 	

NOTICE:THIS DRAWING AND DESIGN INFORMATION CONTAINED HEREIN SHALL REMAIN THE SOLE PROPERTY OF CASTER CONCEPTS INC. IT IS SUBMITTED FOR USE IN REFERENCE ONLY AND SHALL NOT BE DUPLICATED OR GIVEN TO A THIRD PARTY WITHOUT THE WRITTEN CONSENT OF CASTER CONCEPTS INC. THIS DRAWING MUST BE RETURNED TO CASTER CONCEPTS INC. UPON REQUEST AT ANY TIME. ACCEPTANCE OF THIS DRAWING SHALL BE CONSTRUED AS AN AGREEMENT OF THESE TERMS.