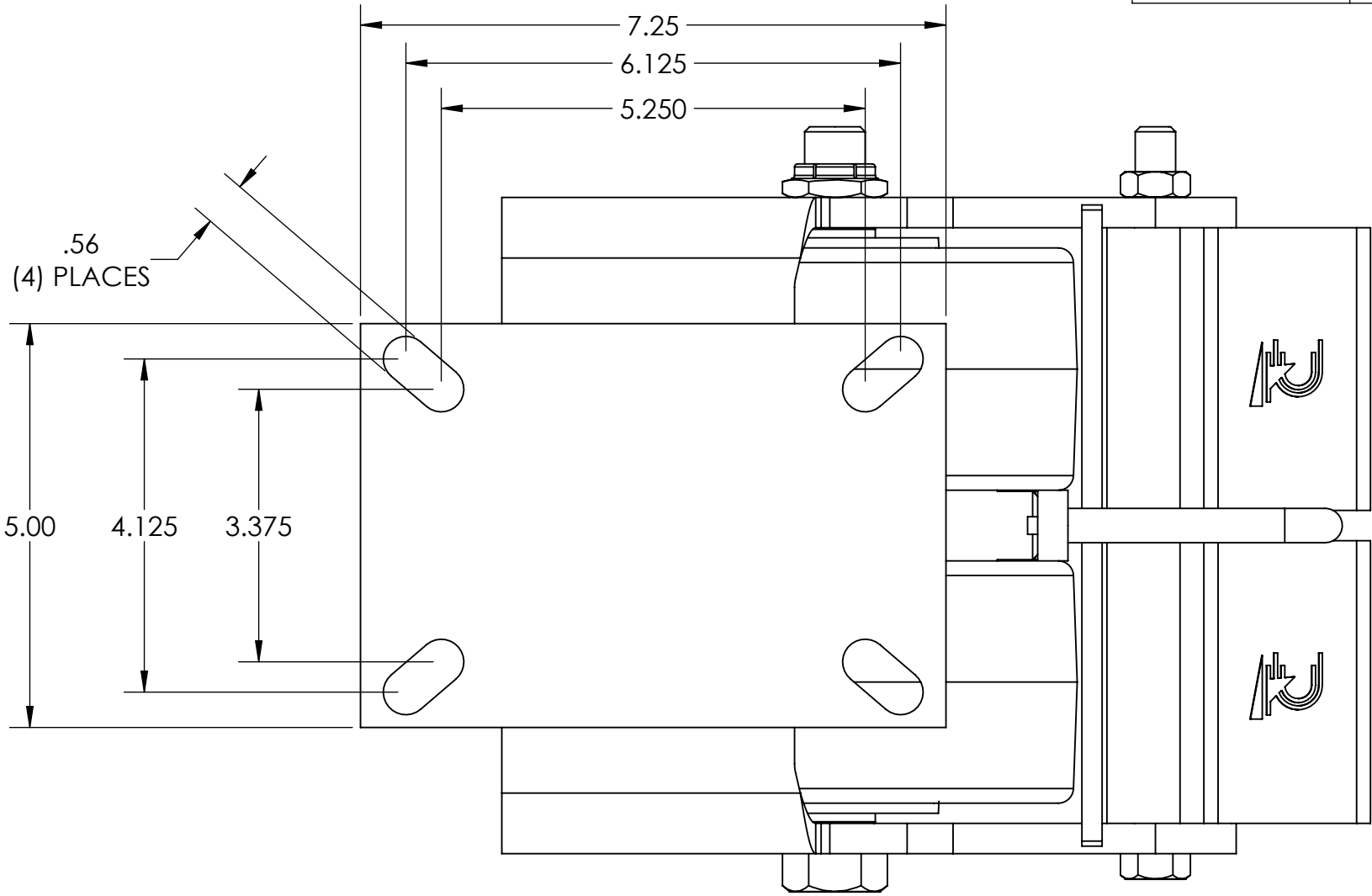
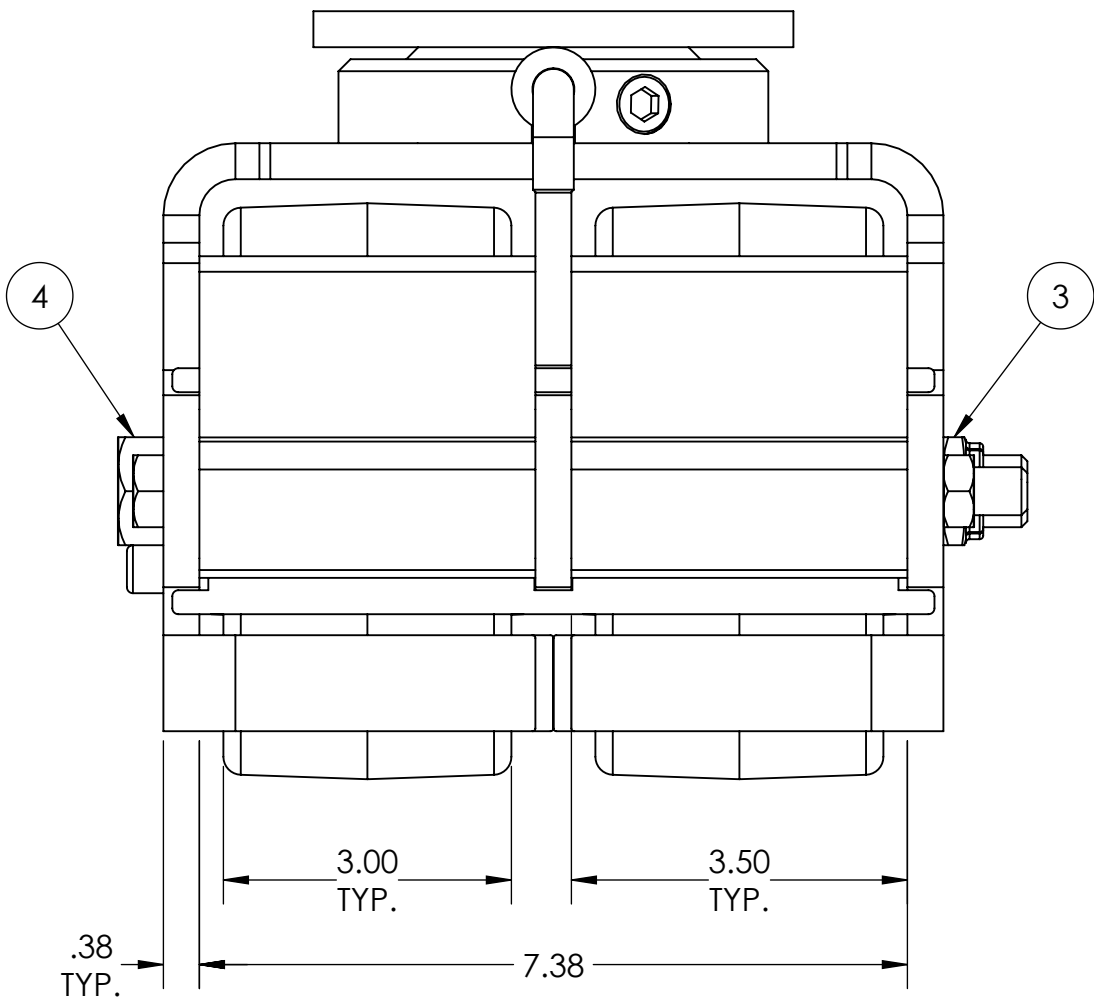
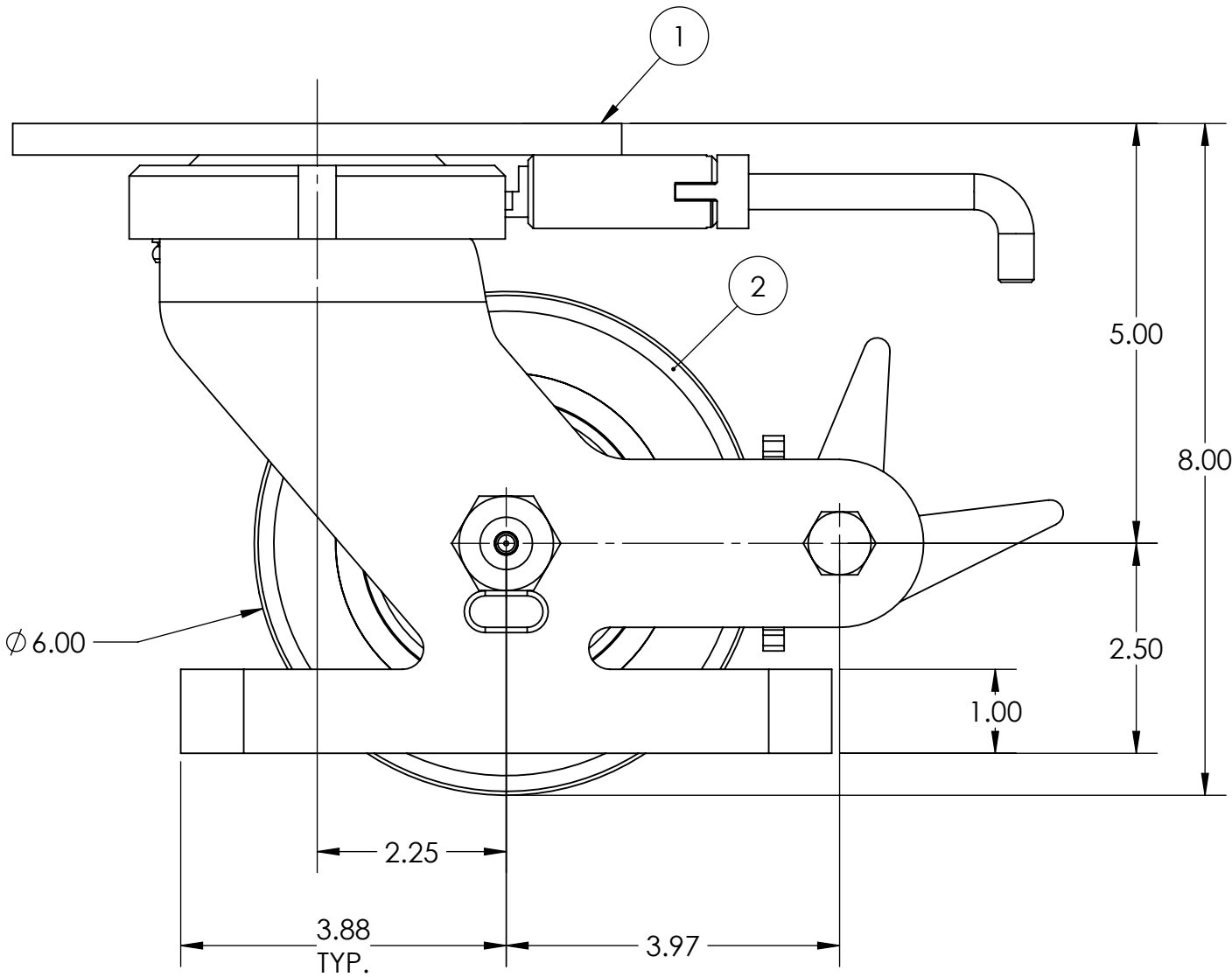
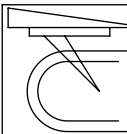
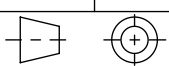


ITEM NO.	QTY.	PART/DRAWING NO.	DESCRIPTION	MATERIAL
1	1	2-71-06300-00-1HDLPTG	2-71 SER. 6.00 X 3.00 SWL. RIG C/W HDSL, PLB & TG	MISC.
2	2	06309-66-12	Ø6.00 X 3.00 THICK TREAD 85 SHORE A POLY WHEEL	MISC.
3	1	LN12160701	3/4-16 LOW HEIGHT FLEXLOC NUT	STEEL
4	1	AX1214402	3/4-16 X 9 HOLLOW AXLE EACH END	STEEL



- NOTES:
1. CASTER IS RATED AS 4,100 LBS @ WALKING SPEEDS, INTERMITTENT USE.
 2. AT 4,100 LBS OF THE LOAD THERE WILL BE A CALCULATED FLOOR LOAD OF 433 PSI.
 3. ESTIMATED COF OF ROLLING RESISTANCE IS 3% OF LOAD TO START MOVING AND 1% OF LOAD TO MAINTAIN. (THIS IS FIGURING 2 SWIVEL AND 2 RIGID CASTERS ON SMOOTH, FLAT CONCRETE) APPLICATION AND FLOOR CONDITIONS WILL IMPACT THIS.
 4. CASTER WEIGHT: 44.21LBS



 CASTER CONCEPTS, INC. 16000 E. MICHIGAN AVE. ALBION, MI 49224 (517) 629-8838 casterconcepts.com		TOLERANCE SPECS. .XX = ±.030 .XXX = ±.010 X° = ±1.0° PART TO BE FREE OF BURRS AND SHARP EDGES	DESCRIPTION: 2-71-06309-66-1HDLPTGSP			
			PART/DRAWING NO: SP181202HDLPTG	DATE: 3/27/2019		
WHERE USED:		FINISH SPECS. ZINC PLATING ON RIG, GRAY PAINT ON WHEEL CORES			SCALE: 1:2	C-SIZE
CHECKED BY: NEKIBUR R.		MATERIAL SPECS.	APPROVED BY:	DRAWN BY: PRAVEEN K.	THIRD ANGLE	

NOTICE:THIS DRAWING AND DESIGN INFORMATION CONTAINED HEREIN SHALL REMAIN THE SOLE PROPERTY OF CASTER CONCEPTS INC. IT IS SUBMITTED FOR USE IN REFERENCE ONLY AND SHALL NOT BE DUPLICATED OR GIVEN TO A THIRD PARTY WITHOUT THE WRITTEN CONSENT OF CASTER CONCEPTS INC. THIS DRAWING MUST BE RETURNED TO CASTER CONCEPTS INC. UPON REQUEST AT ANY TIME. ACCEPTANCE OF THIS DRAWING SHALL BE CONSTRUED AS AN AGREEMENT OF THESE TERMS.