



CASTER CONCEPTS

95 SERIES EXTRA HEAVY DUTY CASTERS 17,000 maximum capacity LBS FOR SEVERE DUTY

FEATURES

Swivel Section: Constructed of hot forged C-1045 steel with a 7" diameter raceway featuring precision tapered load and tapered thrust bearings.

Kingpin: 1-1/4" integrally forged kingpin with slotted adjusting nut

Legs: 1/2" x 4" legs are formed and continuously welded both inside and outside for greater strength

Axle: 1-1/4" diameter axle

Lubrication: Pre-lubricated before shipping

Wheel: 6" to 18" diameter wheels

Standard: Built to standard industry dimensions for top plate, bolt hole spacing and overall height

Finish: Water based acrylic black paint



95-10409-21-1 shown

BENEFITS

The 95 Series is ideal for applications where high load capacities are required and where the caster will ensure constant use under load.

The integrally forged kingpin and slotted adjusting nut add strength and longevity to the life of the swivel section.

OPTIONS

Brakes

Poly Cam:	PCB-95 *
Heavy Duty Tread:	HDTLB-95
Wrap Around:	WAB-95
Face Contact:	FCB-95

Swivel Locks

Factory Installed:	SL-95
Heavy Duty:	HDSL-95
Demountable:	DSL-95

Sealed Swivel:

SS-95

Sealed Wheels:

WS

Toe Guard:

TG-95

* For wheels with diameters \geq 6 inches.

APPLICATIONS

Rugged applications include die carts, towed trailers, automotive plant equipment, aircraft maintenance stands, production line delivery trailers, paving machinery and boat dollies.

Work in Progress: Modular building manufacturing.

CONTACT

For additional information on these casters, please contact your nearest representative:

BEYOND
STANDARD



CASTER CONCEPTS

95 SERIES EXTRA HEAVY DUTY CASTERS **17,000** maximum capacity **LBS** FOR SEVERE DUTY

WHEEL		CAPACITY			PART NUMBER				
Dia.	Width	Material	Roller Bearing	Tapered	OAH	Swivel Lead	Straight Roller	Precision Tapered	Wt.
6	3.0	Forged Steel	6,000	10,000	9.0	2.25	95-06301-20-1	95-06309-20-1	60
6	3.0	H.D. Forged Steel		17,000	9.0	2.25		95-06309-21-1	60
6	3.0	Polyurethane		2,500	9.0	2.25		95-06309-60-1	50
6	4.0	H.D. Polyurethane	3,000	3,000	9.0	2.25	95-06401-65-1	95-06409-65-1	50
8	3.0	H.D. Polyurethane	3,500	3,500	11.0	2.25	95-08301-65-1	95-08309-65-1	50
8	4.0	Forged Steel	8,400	10,000	11.0	2.25	95-08401-20-1	95-08409-20-1	73
8	4.0	H.D. Forged Steel		17,000	11.0	2.25		95-08409-21-1	73
8	4.0	Polyurethane	3,800	3,800	11.0	2.25	95-08401-60-1	95-08409-60-1	63
10	3.0	Cast Iron	4,000	4,000	13.0	2.50	95-10301-11-1	95-10309-11-1	61
10	3.0	H.D. Forged Steel	6,000	6,500	13.0	2.50	95-10301-21-1	95-10309-21-1	62
10	3.0	Polyurethane		3,700	13.0	2.50		95-10309-60-1	51
10	4.0	H.D. Forged Steel		17,000	13.0	2.50		95-10409-21-1	83
10	4.0	Forged Steel	8,400	10,000	13.0	2.50	95-10401-20-1	95-10409-20-1	83
10	4.0	Polyurethane	4,200	4,200	13.0	2.50	95-10401-60-1	95-10409-60-1	59
10	4.0	H.D. Polyurethane	5,000	5,000	13.0	2.50	95-10401-65-1	95-10409-65-1	68
10	4.0	Mold on Rubber	1,500	1,500	13.0	2.50	95-10401-70-1	95-10409-70-1	66
10	5.0	H.D. Polyurethane	6,000	6,000	13.0	2.50	95-10501-65-1	95-10509-65-1	68
12	3.0	H.D. Polyurethane	3,850	3,850	15.5	2.50	95-12301-65-1	95-12309-65-1	57
12	3.5	Laminated Phenolic	4,700	4,700	15.5	2.50	95-12351-35-1	95-12359-35-1	59
12	3.5	Phenolic Resin	4,000	4,000	15.5	2.50	95-12351-30-1	95-12359-30-1	60
12	3.5	Mold on Rubber	1,350	1,350	15.5	2.50	95-12351-70-1	95-12359-70-1	63
12	4.0	Ductile Iron	7,500	7,500	15.5	2.50	95-12401-12-1	95-12409-12-1	90
12	4.0	H.D. Phenolic	8,000	8,000	15.5	2.50	95-12401-31-1	95-12409-31-1	68
12	4.0	H.D. Polyurethane	5,500	5,500	15.5	2.50	95-12401-65-1	95-12409-65-1	75
12	4.0	T/R Compound	4,800	4,800	15.5	2.50	95-12401-66-1	95-12409-66-1	75
12	4.0	70D Hard Polyurethane	6,600	6,600	15.5	2.50	95-12401-67-1	95-12409-67-1	75
12	4.0	Mold on Rubber	1,600	1,600	15.5	2.50	95-12401-70-1	95-12409-70-1	71
12	5.0	Ductile Iron	9,000	15,000	15.5	2.50	95-12501-12-1	95-12509-12-1	130
12	5.0	H.D. Polyurethane	6,250	6,250	15.5	2.50	95-12501-65-1	95-12509-65-1	90
12	5.0	70D Hard Polyurethane	7,500	7,500	15.5	2.50	95-12501-67-1	95-12509-67-1	90
12	5.0	Mold on Rubber	1,850	1,850	15.5	2.50	95-12501-70-1	95-12509-70-1	88
14	5.0	Cast Iron	7,000	7,000	17.5	2.50	95-14501-10-1	95-14509-10-1	100
16	4.0	Laminated Phenolic	8,400	8,400	19.0	3.00	95-16401-31-1	95-16409-31-1	80
16	4.0	Cast Iron	7,500	7,500	19.0	3.00	95-16401-10-1	95-16409-10-1	105
16	4.0	H.D. Polyurethane	6,000	6,000	19.0	3.00	95-16401-65-1	95-16409-65-1	109
16	4.0	Mold on Rubber	1,450	1,450	19.0	3.00	95-16401-70-1	95-16409-70-1	106
16	5.0	Polyurethane	8,000	8,000	19.0	3.00	95-16501-65-1	95-16509-65-1	115
16	5.0	70D Hard Polyurethane	8,000	8,000	19.0	3.00	95-16501-67-1	95-16509-67-1	115
18	5.0	H.D. Polyurethane	8,000	8,000	21.0	4.00	95-18501-65-1	95-18509-65-1	120
18	5.0	70D Hard Polyurethane	8,000	9,000	21.0	4.00	95-18501-67-1	95-18509-67-1	120

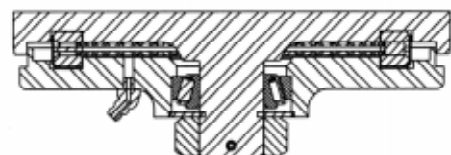
Capacity listed is for manual operation. For powered operations, consult factory.

Part Numbers listed are for the swivel casters. For rigid casters, change the last digit from 1 to 2 (i.e. 95-16509-67-2)

Estimated weight is for swivel caster. Deduct 20 pounds for rigid casters.

Top Plate Size	Bolt Hole Spacing	Bolt Diameter
Std: 8.5 x 8.5	7.0 x 7.0	0.625

95 Series Cross Sectional View



CASTER CONCEPTS WILL MODIFY ANY CASTER TO MEET CUSTOMER SPECIFICATIONS

Caster Concepts, Inc., 16000 E. Michigan Ave., Albion, MI 49224 (517) 629-8838 Facsimile (800) 800-0036 www.casterconcepts.com