



**CASTER CONCEPTS**

# 85 SERIES EXTRA HEAVY DUTY CASTERS 10,000 maximum capacity LBS

## FEATURES

**Swivel Section:** Constructed from hot forged C-1045 steel, the swivel section features a large precision machined raceway, with a precision tapered load and tapered thrust bearing.

**Kingpin:** 1-1/4" integrally forged kingpin with slotted adjusting nut

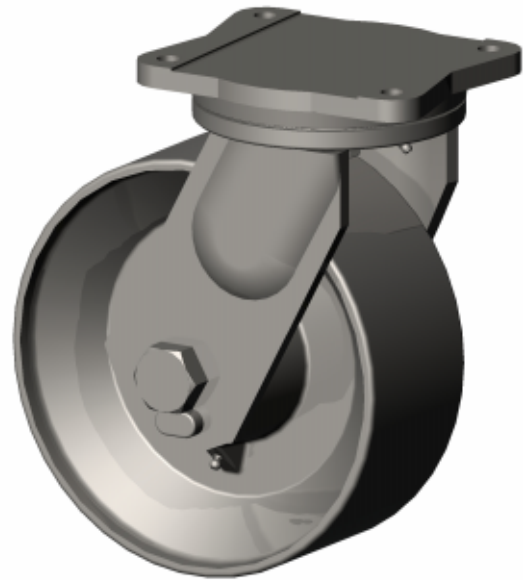
**Legs:** 3/8" x 4" legs are formed and continuously welded both inside and outside

**Axle:** 1", Grade 5

**Lubrication:** Pre-lubricated before shipping

**Wheels:** 6" to 12" diameter wheels with widths from 2-1/2" to 4".

**Finish:** Water based acrylic black paint



85-10409-20-1 shown

## BENEFITS

The tapered load bearing and thrust bearing enhance the precision nature of this caster creating a swivel section with the highest load carrying capacity for its class. The 85 Series delivers an exceptionally tight tolerance fit. Additionally, the integrally forged kingpin and slotted adjusting nut add strength and longevity to the life of the swivel section.

## OPTIONS

### Brakes

Poly Cam:	PCB-85*
Heavy Duty Tread:	HDTLB-85
Wrap Around:	WAB-85*
Face Contact:	FCB-85

### Swivel Locks

Factory Installed:	SL-85
Heavy Duty:	HDSL-85

Sealed Swivel: SS-85

Sealed Wheels: WS

Toe Guard: TG-85

\* For wheels with diameters  $\geq$  6 inches

Contact the factory for overall heights and special finishes.

## APPLICATIONS

This design is used in applications where high load capacities are required and the area for the caster does not lend itself to the bulkiness of larger casters. It is also ideal where constant use under load requires a high performance caster. Applications may include high capacity die tables, die carts, towed trailers, aerospace industry, steel mills, gantries, automated guided vehicles and aircraft maintenance applications.

## CONTACT

For additional information on these casters, please contact your nearest representative:

BEYOND  
STANDARD

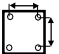



**CASTER CONCEPTS**

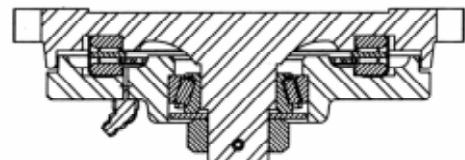
# 85 SERIES EXTRA HEAVY DUTY CASTERS 10,000 maximum capacity LBS

WHEEL		CAPACITY			PART NUMBER				
Dia.	Width	Material	Roller Bearing	Tapered	OAH	Swivel Lead	Straight Roller	Precision Tapered	Wt.
6	2.5	Forged Steel	4,000	5,000	8.5	2.5	85-06251-20-1	85-06259-20-1	38
6	3.0	T/R Compound Poly		1,640	8.5	2.5		85-06309-66-1	37
6	3.0	H.D. Polyurethane	2,500	2,500	8.5	2.5	85-06301-65-1	85-06309-65-1	40
6	3.0	Polyurethane	2,050	2,050	8.5	2.5	85-06301-60-1	85-06309-60-1	37
6	3.0	Laminated Phenolic	2,500	2,500	8.5	2.5	85-06301-35-1	85-06309-35-1	30
6	3.0	Forged Steel	6,000	10,000	8.5	2.5	85-06301-20-1	85-06309-20-1	45
6	3.0	Cast Iron	2,500	2,500	8.5	2.5	85-06301-10-1	85-06309-10-1	36
6	4.0	H.D. Polyurethane	3,000	3,000	8.5	2.5	85-06401-65-1	85-06409-65-1	36
8	3.0	Mold on Rubber	825	825	10.5	2.5	85-08301-70-1	85-08309-70-1	37
8	3.0	T/R Compound Poly	2,500	2,500	10.5	2.5	85-08301-66-1	85-08309-66-1	45
8	3.0	Polyurethane	2,500	2,500	10.5	2.5	85-08301-60-1	85-08309-60-1	40
8	3.0	H.D. Polyurethane	3,100	3,100	10.5	2.5	85-08301-65-1	85-08309-65-1	45
8	3.0	Laminated Phenolic	3,000	3,000	10.5	2.5	85-08301-35-1	85-08309-35-1	32
8	3.0	Forged Steel	4,500	5,500	10.5	2.5	85-08301-20-1	85-08309-20-1	44
8	3.0	Cast Iron	3,500	3,500	10.5	2.5	85-08301-10-1	85-08309-10-1	40
8	4.0	Polyurethane	3,800	3,800	10.5	2.5	85-08401-60-1	85-08409-60-1	48
8	4.0	Forged Steel	8,400	10,000	10.5	2.5	85-08401-20-1	85-08409-20-1	48
10	3.0	Mold on Rubber	1,550	1,550	12.5	2.5	85-10301-70-1	85-10309-70-1	50
10	3.0	T/R Compound Poly	2,800	2,800	12.5	2.5	85-10301-66-1	85-10309-66-1	55
10	3.0	Polyurethane	3,500	3,500	12.5	2.5	85-10301-60-1	85-10309-60-1	49
10	3.0	H.D. Polyurethane	3,700	3,700	12.5	2.5	85-10301-65-1	85-10309-65-1	55
10	3.0	Laminated Phenolic	3,250	3,250	12.5	2.5	85-10301-35-1	85-10309-35-1	36
10	3.0	Forged Steel	5,000	6,500	12.5	2.5	85-10301-21-1	85-10309-21-1	54
10	3.0	Cast Iron	4,000	4,000	12.5	2.5	85-10301-11-1	85-10309-11-1	50
10	4.0	Mold on Rubber	1,500	1,500	12.5	2.5	85-10401-70-1	85-10409-70-1	51
10	4.0	Polyurethane	4,200	4,200	12.5	2.5	85-10401-60-1	85-10409-60-1	55
10	4.0	H.D. Polyurethane	5,000	5,000	12.5	2.5	85-10401-65-1	85-10409-65-1	60
10	4.0	Forged Steel	8,400	10,000	12.5	2.5	85-10401-20-1	85-10409-20-1	74
12	3.0	Mold on Rubber	1,125	1,125	15.5	2.5	85-12301-70-1	85-12309-70-1	55
12	3.0	T/R Compound Poly	2,900	2,900	15.5	2.5	85-12301-66-1	85-12309-66-1	57
12	3.0	H.D. Polyurethane	3,850	3,850	15.5	2.5	85-12301-65-1	85-12309-65-1	53
12	3.0	Polyurethane	3,500	3,500	15.5	2.5	85-12301-60-1	85-12309-60-1	55
12	4.0	Mold on Rubber	1,600	1,600	15.5	2.5	85-12401-70-1	85-12409-70-1	58
12	4.0	T/R Compound Poly	3,800	3,800	15.5	2.5	85-12401-66-1	85-12409-66-1	70
12	4.0	H.D. Polyurethane	5,000	5,000	15.5	2.5	85-12401-65-1	85-12409-65-1	70
12	4.0	Ductile Iron	7,500	7,500	15.5	2.5	85-12401-12-1	85-12409-12-1	90

Capacity listed is for manual operation. For powered operations, consult factory.  
 Part Numbers listed are for the swivel casters. For rigid casters, change the last digit from 1 to 2 (i.e. 85-12409-70-2)  
 Estimated weight is for swivel caster. Deduct 20 percent of swivel caster weight for rigid casters.  
 All dimensions are in inches. All weights are in pounds.

 Top Plate Size	 Bolt Hole Spacing	 Bolt Diameter
Std: 6.0 x 7.5	4.5 x 6.0	0.5

85 Series Cross Sectional View



**CASTER CONCEPTS WILL MODIFY ANY CASTER TO MEET CUSTOMER SPECIFICATIONS**

Caster Concepts, Inc., 16000 E. Michigan Ave., Albion, MI 49224 (517) 629-8838 Facsimile (800) 800-0036 www.casterconcepts.com