



CASTER CONCEPTS

81

SERIES EXTRA HEAVY DUTY CASTERS **10,000** maximum capacity LBS

FEATURES

Swivel Section: Constructed from drop forged C-1045 steel. The swivel section features a large precision machined 4" single ball bearing load/thrust raceway. The unique design of this raceway actually places the 3/4" diameter load/thrust ball bearings in shear, locking the swivel section together.

Kingpin: Kingpinless style design

Legs: 3/8" x 4" formed and continuously welded both inside and outside

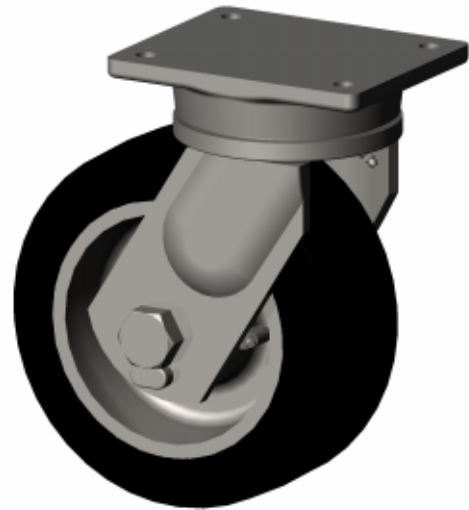
Axle: 1", Grade 5 axle

Lubrication: Pre-lubricated before shipping

Wheels: 6" to 12" diameter roller bearing wheels have a 1-1/4" I.D. bearing and rotate on a 1-1/4" hardened and ground steel spanner bushing. All tapered bearing wheels have a 1" tapered bearing and rotate on a 1" axle.

Standard: Shielded swivel

Finish: Water based acrylic black paint



81-10409-65-1 shown

BENEFITS

The 81 Series kingpinless style casters feature a unique single ball race design. This design provides a high strength swivel section that will swivel easily under extremely heavy loads.

OPTIONS

Brakes

Poly Cam:	PCB-81*
Heavy Duty Tread:	HDTLB-81
Wrap Around:	WAB-81*
Face Contact:	FCB-81

Swivel Locks

Factory Installed:	SL-81
Heavy Duty	HDSL-81
Demountable:	DSL-81

Sealed Swivel: SS-81

Sealed Wheels: WS

Toe Guard: TG-81

* For wheels with diameters \geq 6 inches

Contact the factory for overall heights and special finishes.

DUAL WHEEL DESIGN AVAILABLE

APPLICATIONS

Suitable for power drawn applications, fiberglass mold dollies, air craft wing and spar tooling, machinery, engine and paint line dollies, body dolly carts, material carts, chassis rack carts, towed trash gondolas, aircraft maintenance stands, production line delivery trailers and automated guided vehicles.

CONTACT

For additional information on these casters, please contact your nearest representative:



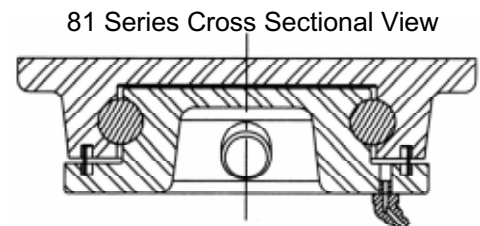
CASTER CONCEPTS

81 SERIES EXTRA HEAVY DUTY CASTERS 10,000 maximum capacity LBS

WHEEL		CAPACITY		PART NUMBER					
Dia.	Width	Material	Roller Bearing	Tapered	OAH	Swivel Lead	Straight Roller	Precision Tapered	Wt.
6	2.5	Forged Steel	4,000	5,000	8.5	2.5	81-06251-20-1	81-06259-20-1	38
6	3.0	T/R Compound Poly		1,640	8.5	2.5		81-06309-66-1	37
6	3.0	Polyurethane	2,050	2,050	8.5	2.5	81-06301-60-1	81-06309-60-1	37
6	3.0	H. D. Polyurethane	2,500	2,500	8.5	2.5	81-06301-65-1	81-06309-65-1	40
6	3.0	Laminated Phenolic	2,500	2,500	8.5	2.5	81-06301-35-1	81-06309-35-1	30
6	3.0	Forged Steel	6,000	10,000	8.5	2.5	81-06301-20-1	81-06309-20-1	45
6	3.0	Cast Iron	2,500	2,500	8.5	2.5	81-06301-10-1	81-06309-10-1	36
6	4.0	H.D. Polyurethane	3,000	3,000	8.5	2.5	81-06401-65-1	81-06409-65-1	40
8	3.0	Mold on Rubber	825	825	10.5	2.5	81-08301-70-1	81-08309-70-1	37
8	3.0	T/R Compound Poly	2,500	2,500	10.5	2.5	81-08301-66-1	81-08309-66-1	45
8	3.0	Polyurethane	2,500	2,500	10.5	2.5	81-08301-60-1	81-08309-60-1	40
8	3.0	H.D. Polyurethane	3,100	3,100	10.5	2.5	81-08301-65-1	81-08309-65-1	45
8	3.0	Laminated Phenolic	3,000	3,000	10.5	2.5	81-08301-35-1	81-08309-35-1	32
8	3.0	Forged Steel	4,500	5,000	10.5	2.5	81-08301-20-1	81-08309-20-1	44
8	3.0	Cast Iron	3,500	3,500	10.5	2.5	81-08301-11-1	81-08309-11-1	40
8	4.0	H.D. Polyurethane	3,800	3,800	10.5	2.5	81-08401-60-1	81-08409-60-1	48
8	4.0	Forged Steel	8,400	10,000	10.5	2.5	81-08401-20-1	81-08409-20-1	48
10	3.0	Mold on Rubber	1,000	1,000	12.5	2.5	81-10301-70-1	81-10309-70-1	50
10	3.0	T/R Compound Poly	2,800	2,800	12.5	2.5	81-10301-66-1	81-10309-66-1	55
10	3.0	Polyurethane	3,000	3,000	12.5	2.5	81-10301-60-1	81-10309-60-1	49
10	3.0	H.D. Polyurethane	3,700	3,700	12.5	2.5	81-10301-65-1	81-10309-65-1	55
10	3.0	Laminated Phenolic	3,250	3,250	12.5	2.5	81-10301-35-1	81-10309-35-1	36
10	3.0	Forged Steel	5,000	6,500	12.5	2.5	81-10301-21-1	81-10309-21-1	54
10	3.0	Cast Iron	4,000	4,000	12.5	2.5	81-10301-11-1	81-10309-11-1	50
10	4.0	Mold on Rubber	1,500	1,500	12.5	2.5	81-10401-70-1	81-10409-70-1	51
10	4.0	Polyurethane	4,200	4,200	12.5	2.5	81-10401-60-1	81-10409-60-1	55
10	4.0	H.D. Polyurethane	5,000	5,000	12.5	2.5	81-10401-65-1	81-10409-65-1	60
10	4.0	Forged Steel	8,400	10,000	12.5	2.5	81-10401-20-1	81-10409-20-1	74
12	3.0	Mold on Rubber	1,125	1,125	15.5	2.5	81-12301-70-1	81-12309-70-1	55
12	3.0	Ductile Iron	6,500	6,500	15.5	2.5	81-12301-12-1	81-12309-12-1	70
12	3.0	T/R Compound Poly	2,900	2,900	15.5	2.5	81-12301-66-1	81-12309-66-1	57
12	3.0	H.D. Polyurethane	3,850	3,850	15.5	2.5	81-12301-65-1	81-12309-65-1	53
12	3.0	Polyurethane	3,500	3,500	15.5	2.5	81-12301-60-1	81-12309-60-1	53
12	4.0	Mold on Rubber	1,600	1,600	15.5	2.5	81-12401-70-1	81-12409-70-1	58
12	4.0	Ductile Iron	7,500	7,500	15.5	2.5	81-12401-12-1	81-12409-12-1	70
12	4.0	T/R Compound Poly	3,800	3,800	15.5	2.5	81-12401-66-1	81-12409-66-1	70
12	4.0	H.D. Polyurethane	5,500	5,500	15.5	2.5	81-12401-65-1	81-12409-65-1	70
12	4.0	70D H.L. Polyurethane	6,600	6,600	15.5	2.5	81-12401-67-1	81-12409-67-1	53

Capacity listed is for manual operation. For powered operations, consult factory.
 Part Numbers listed are for the swivel casters. For rigid casters, change the last digit from 1 to 2 (i.e. 81-12409-70-2)
 Estimated weight is for swivel caster. Deduct 20 percent of swivel caster weight for rigid casters.
 All dimensions are in inches. All weights are in pounds.

Top Plate Size	Bolt Hole Spacing	Bolt Diameter
Std: 6.25 x 7.63	4.5 x 6.0	0.5



CASTER CONCEPTS WILL MODIFY ANY CASTER TO MEET CUSTOMER SPECIFICATIONS

Caster Concepts, Inc., 16000 E. Michigan Ave., Albion, MI 49224 (517) 629-8838 Facsimile (800) 800-0036 www.casterconcepts.com