



**CASTER CONCEPTS**

# 70 SERIES HEAVY DUTY CASTERS 3500 maximum capacity LBS

## FEATURES

**Swivel Section:** Made from hot forged C-1045 steel with 4" diameter load raceway and 1/2" diameter ball bearings.

**Kingbolt:** 1" diameter, Grade 5 kingbolt is heat treated and features a slotted adjusting nut.

**Legs:** 3/8" x 3" steel, continuously welded inside and outside to the yoke base

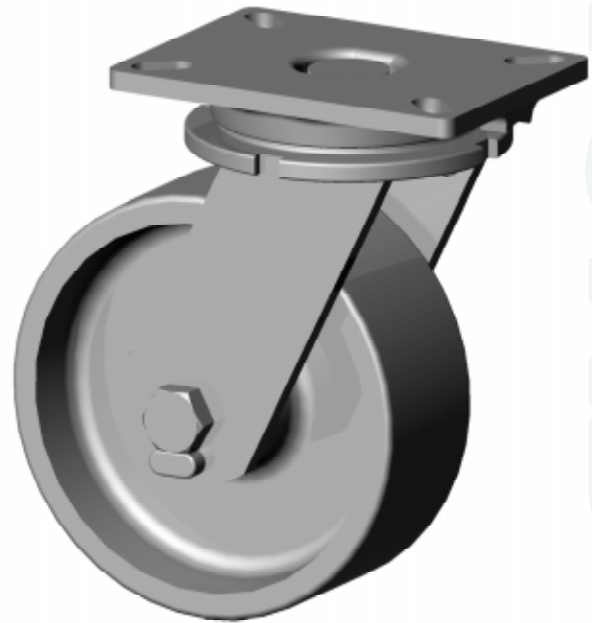
**Axle:** 3/4" diameter axle

**Lubrication:** Pre-lubricated before shipping

**Wheels:** 2-1/2" to 3" wide wheels. Roller bearings rotate on hardened and ground 1" steel spanner bushing.

**Standard:** Notched yoke base for field installation of swivel locks.

**Finish:** Water based acrylic gray paint



70-08301-20-1 shown

## BENEFITS

The 70 Series is one of the most popular industrial caster designs. The hot forged swivel sections and industrial width wheels are well suited for many in-plant applications. The added strength of the kingbolt provides extended caster service life.

## OPTIONS

### Brakes

Poly Cam:	PCB-70*
Tread Lock:	TLB-70
Wrap Around:	WAB-70*
Face Contact:	FCB-70
Single Side:	SSB-70
Dual Side:	DSB-70

### Swivel Locks

Factory Installed:	SL-70
Demountable:	DSL-70

Sealed Swivel: SS-70

Sealed Wheels: WS

Toe Guard: TG-70

\* For wheels with diameters  $\geq$  6 inches

## APPLICATIONS

Suitable for medium heavy duty power drawn equipment, as well as heavier duty manually handled equipment, including gantry cranes, work platforms, dragline trucks, warehouse trucks, modular home manufacturing, production racks and fixtures, high capacity die tables, machinery dollies, corrugated steel box trucks, heavy portable storage racks, green tire racks, scrap hoppers and other equipment.

## CONTACT

For additional information on these casters, please contact your nearest representative:

BEYOND  
STANDARD



**CASTER CONCEPTS**

# 70 SERIES HEAVY DUTY CASTERS 3500 maximum capacity LBS

WHEEL		CAPACITY				PART NUMBER			
Dia.	Width	Material	Roller Bearing	Tapered	OAH	Swivel Lead	Straight Roller	Precision Tapered	Wt.
4	3.00	Cast Iron	2,000		6.0	2.00	70-04301-10-1		20
4	3.25	Polyurethane	1,200		6.0	2.00	70-04321-60-1		17
4	4.00	Cast Iron	3,500		6.0	2.00	70-04401-10-1		27
4	4.00	Polyurethane	1,600		6.0	2.00	70-04401-60-1		25
4	4.00	70D H.L. Polyurethane	2,000	2,000	6.0	2.00	70-04401-63-1	70-04409-63-1	25
5	2.50	Cast Iron	2,000	2,000	7.0	2.50	70-05251-10-1	70-05259-10-1	24
5	3.00	Polyurethane	1,550	1,550	7.0	2.50	70-05301-60-1	70-05309-60-1	23
6	2.50	Cast Iron	2,500	2,500	8.0	2.50	70-06251-10-1	70-06259-10-1	27
6	2.50	Forged Steel	3,500	3,500	8.0	2.50	70-06251-20-1	70-06259-20-1	25
6	3.00	Cast Iron	2,500	2,500	8.0	2.50	70-06301-10-1	70-06309-10-1	25
6	3.00	Phenolic Resin	2,000	2,000	8.0	2.50	70-06301-30-1	70-06309-30-1	19
6	3.00	Polyurethane	2,050	2,050	8.0	2.50	70-06301-60-1	70-06309-60-1	21
6	3.00	T/R Compound Poly		1,640	8.0	2.50		70-06302-61-1*	21
6	3.00	H.D. Polyurethane	2,500	2,500	8.0	2.50	70-06301-65-1	70-06309-65-1	23
6	3.00	T/R Compound Poly	1,640	1,640	8.0	2.50	70-06301-66-1	70-06309-66-1	23
6	3.00	Mold on Rubber	675	675	8.0	2.50	70-06301-70-1	70-06309-70-1	24
6	4.00	Polyurethane	3,000	3,000	8.0	2.50	70-06401-65-1	70-06409-65-1	34
8	3.00	Cast Iron	3,500	3,500	10.5	2.50	70-08301-10-1	70-08309-10-1	34
8	3.00	Forged Steel	3,500	3,500	10.5	2.50	70-08301-20-1	70-08309-20-1	34
8	3.00	Phenolic Resin	2,500	2,500	10.5	2.50	70-08301-30-1	70-08309-30-1	22
8	3.00	Polyurethane	2,500	2,500	10.5	2.50	70-08301-60-1	70-08309-60-1	30
8	3.00	T/R Compound Poly		2,000	10.5	2.50		70-08302-61-1*	30
8	3.00	H.D. Polyurethane	3,100	3,100	10.5	2.50	70-08301-65-1	70-08309-65-1	34
8	3.00	T/R Compound Poly	2,500	2,500	10.5	2.50	70-08301-66-1	70-08309-66-1	34
8	3.00	Mold on Rubber	850	850	10.5	2.50	70-08301-70-1	70-08309-70-1	27
10	3.00	Cast Iron	3,500	3,500	12.5	2.50	70-10301-10-1	70-10309-10-1	40
10	3.00	Forged Steel	3,500	3,500	12.5	2.50	70-10301-20-1	70-10309-20-1	43
10	3.00	Phenolic Resin	2,900	2,900	12.5	2.50	70-10301-30-1	70-10309-30-1	25
10	3.00	Polyurethane	3,000	3,000	12.5	2.50	70-10301-60-1	70-10309-60-1	35
10	3.00	T/R Compound Poly		2,400	12.5	2.50		70-10302-61-1*	35
10	3.00	H.D. Polyurethane	3,500	3,500	12.5	2.50	70-10301-65-1	70-10309-65-1	40
10	3.00	T/R Compound Poly	2,750	2,750	12.5	2.50	70-10301-66-1	70-10309-66-1	40
10	3.00	Mold on Rubber	1,000	1,000	12.5	2.50	70-10301-70-1	70-10309-70-1	30
10	4.00	Polyurethane	3,500	3,500	12.5	2.50	70-10401-60-1	70-10409-60-1	45
10	4.00	Mold on Rubber	1,400	1,400	12.5	2.50	70-10401-70-1	70-10409-70-1	44
12	3.00	Ductile Iron	3,500	3,500	15.5	2.50	70-12301-12-1	70-12309-12-1	55
12	3.00	Phenolic Resin	3,500	3,500	15.5	2.50	70-12301-30-1	70-12309-30-1	30
12	3.00	Polyurethane	3,500	3,500	15.5	2.50	70-12301-60-1	70-12309-60-1	45
12	3.00	Mold on Rubber	1,125	1,125	15.5	2.50	70-12301-70-1	70-12309-70-1	42
12	4.00	Mold on Rubber	1,600	1,600	15.5	2.50	70-12401-70-1	70-12409-70-1	56

\*These casters have precision ball bearings.

Capacity listed is for manual operation. For powered operations, consult factory.

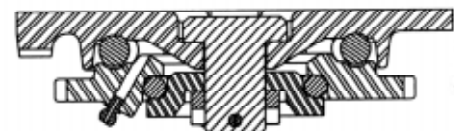
Part Numbers listed are for the swivel casters. For rigid casters, change the last digit from 1 to 2 (i.e. 65-10309-70-2)

Estimated weight is for swivel caster. Deduct 20 percent of swivel caster weight for rigid casters.

All dimensions are in inches. All weights are in pounds.

Top Plate Size	Bolt Hole Spacing	Bolt Diameter
Std: 5.25 x 7.25 x .38	3.375 x 5.25 Slotted to 4.125 x 6.125	0.5

70 Series Cross Sectional View



**CASTER CONCEPTS WILL MODIFY ANY CASTER TO MEET CUSTOMER SPECIFICATIONS**

Caster Concepts, Inc., 16000 E. Michigan Ave., Albion, MI 49224 (517) 629-8838 Facsimile (800) 800-0036 www.casterconcepts.com