



**CASTER CONCEPTS**

# 60 SERIES HEAVY DUTY CASTERS 1500 maximum capacity LBS

## FEATURES

**Swivel Section:** The hot forged, SAE 1045 steel swivel section features a precision machined 3-1/4" diameter load race with 7/16" ball bearings.

**Kingpin:** 3/4" integrally forged as part of the top plate with fully machined raceways and slotted adjusting nut

**Legs:** 1/4" x 2" bar continuously welded inside and outside to the yoke base

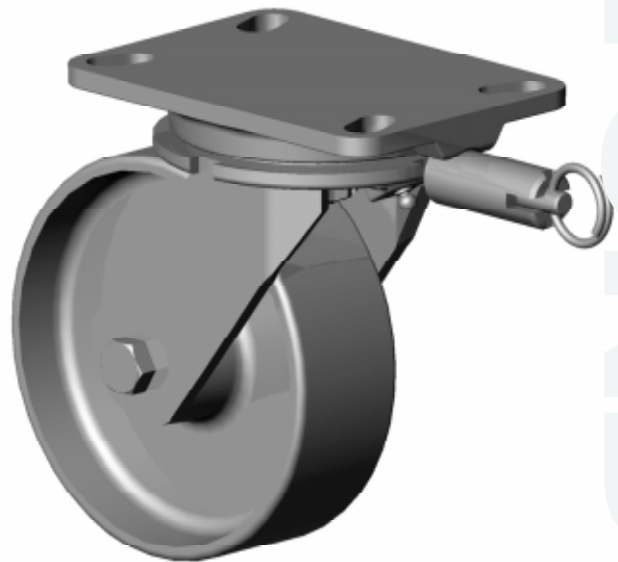
**Axle:** 1/2" diameter axle

**Lubrication:** Pre-lubricated before shipping

**Wheels:** 4" to 8" wheels

**Finish:** Water-based acrylic gray paint

**Standard:** Notched yoke base for field installation of swivel locks.



60-06201-20-1 with optional four position swivel lock

## BENEFITS

The 60 Series hot forged casters are heavier and stronger than cold forged casters. Additionally, the precision machined raceways have longer wearing characteristics. Available with a wide variety of options, these heavy duty casters are excellent for in-plant equipment.

## APPLICATIONS

Excellent for parts bins, towline carts, dough troughs, automated vehicles, production racks and fixtures, pan trucks, conveyor systems and other heavy duty applications.

## OPTIONS

### Brakes

Cam:	CB-60
Poly Cam:	PCB-60*
Tread Lock:	TLB-60
Wrap Around:	WAB-60
Dual Side:	DSB-60

### Swivel Locks

Factory Installed:	SL-60
Demountable:	DSL-60

Sealed Swivel: SS-60

Sealed Wheel: WS

Toe Guard TG-60

Precision Tapered Thrust Bearings (68 Series)

Precision Tapered Load & Trust Bearings (69 Series)

\*For wheels with diameter ≥ 6 inches

60 Series Cross Sectional View



## CONTACT

For additional information on these casters, please contact your nearest representative:

BEYOND  
STANDARD



**CASTER CONCEPTS**

# 60 SERIES HEAVY DUTY CASTERS

## 1500 maximum capacity LBS

WHEEL		CAPACITY				PART NUMBER			
-------	--	----------	--	--	--	-------------	--	--	--

Dia.	Width	Material	Roller Bearing	Precision Ball	OAH	Swivel Lead	Roller Bearing	Precision Ball	Wt.
4	1.5	Forged Steel	1,400	1,400	5.62	1.50	60-04101-20-1	60-04109-20-1†	7.25
4	2.0	Phenolic Resin	800		5.62	1.50	60-04201-30-1		7.50
4	2.0	Cast Iron	1,000		5.62	1.50	60-04201-10-1		7.50
4	2.0	Polyurethane	700	700	5.62	1.50	60-04201-60-1	60-04204-60-1	7.50
4	2.0	Soft Polyurethane	600	600	5.62	1.50	60-04201-66-1	60-04202-66-1	7.50
4	2.0	Envirothane	650	650	5.62	1.50	60-04201-62-1	60-04202-62-1	7.50
4	2.0	Mold on Rubber	350		5.62	1.50	60-04201-70-1		8.20
4	2.0	Softech	250	250	5.62	1.50	60-04201-72-1	60-04204-72-1*	8.00
5	2.0	Forged Steel	1,500	1,500	6.50	1.75	60-05201-20-1	60-05209-20-1†	10.20
5	2.0	Cast Iron	1,200		6.50	1.75	60-05201-10-1		9.20
5	2.0	Phenolic Resin	1,000		6.50	1.75	60-05201-30-1		8.50
5	2.0	Polyurethane	1,050	1,050	6.50	1.75	60-05201-60-1	60-05204-60-1	10.00
5	2.0	T/R Compound	850	850	6.50	1.75	60-05201-61-1	60-05204-61-1	10.00
5	2.0	Envirothane	800	800	6.50	1.75	60-05201-62-1	60-05202-62-1	7.50
5	2.0	Mold on Rubber	400		6.50	1.75	60-05201-70-1		10.00
5	2.0	Softech	275	275	6.50	1.75	60-05201-72-1	60-05204-72-1*	10.00
6	2.0	Forged Steel	1,500	1,500	7.50	2.25	60-06201-20-1	60-06209-20-1†	13.50
6	2.0	Cast Iron	1,200		7.50	2.25	60-06201-10-1		13.00
6	2.0	Phenolic Resin	1,200		7.50	2.25	60-06201-30-1		9.50
6	2.0	Polyurethane	1,200	1,200	7.50	2.25	60-06201-60-1	60-06202-60-1	12.00
6	2.0	T/R Compound	1,000	1,000	7.50	2.25	60-06201-61-1	60-06202-61-1	12.00
6	2.0	Solid Elastomer	950	950	7.50	2.25	60-06201-62-1	60-06202-62-1	12.00
6	2.0	Mold on Rubber	425		7.50	2.25	60-06201-70-1		12.00
6	2.0	Softech	450	450	7.50	2.25	60-06201-72-1	60-06204-72-1*	12.00
8	2.0	Cast Iron	1,500		10.12	2.25	60-08201-10-1		16.50
8	2.0	Phenolic Resin	1,400		10.12	2.25	60-08201-30-1		12.00
8	2.0	Polyurethane	1,500	1,500	10.12	2.25	60-08201-60-1	60-08202-60-1	14.00
8	2.0	T/R Compound	1,200	1,200	10.12	2.25	60-08201-61-1	60-08202-61-1	14.00
8	2.0	Solid Elastomer	1,300	1,300	10.12	2.25	60-08201-62-1	60-08202-62-1	14.00
8	2.0	Mold on Rubber	500		10.12	2.25	60-08201-70-1		14.00
8	4.0	Softech	600	600	10.12	2.25	60-08201-72-1	60-08204-72-1*	14.00

Capacity listed is for manual operation. For powered operations, consult factory.  
 Part Numbers listed are for the swivel caster. For rigid casters, change the last digit from 1 to 2 (i.e. 60-06201-60-2)  
 Estimated weight is for swivel caster. Deduct 20 percent of swivel caster weight for rigid casters.

† This caster has tapered roller bearings

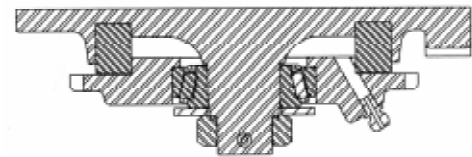
\* This caster has annular ball bearing

All dimensions are in inches. All weights are in pounds.

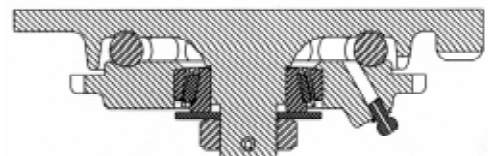
For tapered thrust bearings, change the first two digits to 68 (i.e. 68-08202-62-1)  
 For tapered load and thrust bearings, change the first 2 digits to 69 (i.e. 69-08202-62-1)

Top Plate Size	Bolt Hole Spacing	Bolt Diameter
Std: 4.5 x 6.25	2.438 x 4.938 Slotted to 3.375 x 5.25	0.50

69 Series Cross Sectional View



68 Series Cross Sectional View



**CASTER CONCEPTS WILL MODIFY ANY CASTER TO MEET CUSTOMER SPECIFICATIONS**

Caster Concepts, Inc., 16000 E. Michigan Ave., Albion, MI 49224 (517) 629-8838 Facsimile (800) 800-0036 www.casterconcepts.com