



CASTER CONCEPTS

Beyond Standard.

POLYURETHANE WHEELS

Caster Concepts has gained a reputation in the industry for application-oriented solutions to tough material handling and mobility problems. Establishing a market for custom and special casters and wheels has driven the need for developing expertise in engineering application solutions with a variety of premium urethane elastomers.

Caster Concepts, in partnership with leading producers of polyurethane prepolymers, is continually working to develop products for a wide range of customer specific needs. While there are standard “go to” products that work in a variety of applications, Caster Concepts is expanding its market reach by applying its application knowledge to solve tough performance applications in a variety of industries. Success in this area includes:

T/R COMPOUND URETHANE WHEELS

This material produces a softer durometer wheel that resists the accumulation of metal chips, sheet metal screws, and foreign objects often found in manufacturing facilities. The high rebound of this material provides increased rollability in ergonomic in-plant applications, and has become a favorite in production line delivery systems across the country.

STANDARD POLYURETHANE

Caster Concepts' standard durometer 95A polyurethane is easily identified by its Maroon color. This material is economical, provides, lower rolling resistance than rubber wheels and are floor protective.

HIGH SPEED WHEELS

Caster Concepts has worked to develop a line of wheels that will withstand the rigors of higher loads and speeds found in today's lift truck industries. These wheels are able to dissipate the heat being generated through the load, the speed, or a combination of both.

ELASTOMERS

Processed in-house, elastomers provide flexibility in material choice, hardness, and finished size. Caster Concepts is adept at processing MDI polyesters, and TDI polyether and polyesters, in a wide range of durometers from 50 durometer shore A to 70 durometer shore D scale.



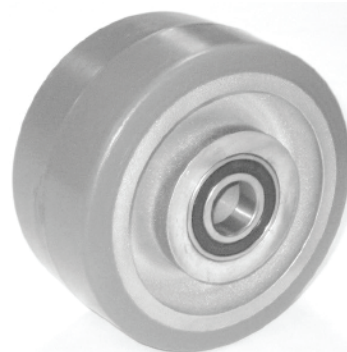
T/R Compound
Ergonomic wheels,
excellent for manual
pushed loads up to 1,500
pounds per dolly.



95A durometer high load
capacity economic floor
protective wheel.



70D Durometer for heavy
loads, floor protection
and ease of movement.



High speed urethane
offers performance
under severe
applications.

Consult factory for your toughest applications.

CASTER CONCEPTS WILL MODIFY ANY CASTER TO MEET CUSTOMER SPECIFICATIONS

Caster Concepts, Inc., 16000 E. Michigan Ave., Albion, MI 49224 (517) 629-8838 Facsimile (800) 800-0036 www.casterconcepts.com



FEATURES

BEARINGS

SEALED PRECISION BALL

Precision ball bearings offer the lowest rolling resistance for ergonomic applications. These bearings are often referred to as “sealed for life” due to their being rubber seals on both sides. These bearings are capable of applications where towing up to 5 mph is present, please consult the factory.

ROLLER BEARING

These commercial bearings are used when a low cost anti-friction bearing is required, they provide excellent load carrying capacity, at an economical cost.

PRECISION TAPERED

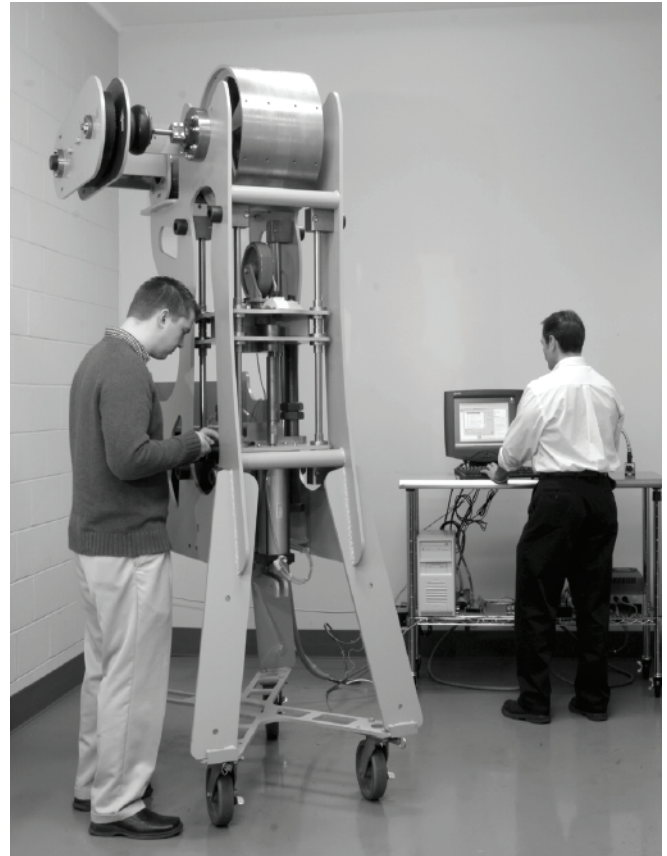
Tapered bearings are used in applications where towing and capacity are present. Tapered bearings do to their nature are adjusted tight at the factory to provide a preload thrust component to the wheel. Tapered bearings are not recommended for applications where there is a high amount of manual movement required.

DELRIN

Delrin bearings are a friction type bearing used in wet applications where light loads and infrequent movement is present.

OILITE

Oilite bearings offer a low cost friction bearing where heat, moisture, infrequent movement or lighter loads are part of the application.



TESTING

In-house test dynamometers, with sophisticated metering equipment, allow Caster Concepts to develop test parameters for product duty – life cycle profile testing and performance evaluations prior to delivery to the field.

METRIC WHEELS

The capability to control the production of wheels through design, production, product testing and final shipment, has driven Caster Concepts to design and develop a full line of metric wheels for replacement on equipment produced in Europe and Asia.

Metric wheel diameters available include:

50 mm	180 mm	230 mm
80 mm	200 mm	250 mm
125 mm	220 mm	300 mm



PRECISION BALL BEARINGS

WHEEL				PART NO.	CAPACITY	PART NO.	CAPACITY	PART NO.	CAPACITY		
Dia.	Width	Hub Length	Bore	Ball Bearing	T/R Soft	Capacity	Std. Poly	Capacity	Hard Poly	Capacity	Wt.
4	2.00	2 7/16	1/2	Precision	04202-66-08	600	04202-65-08	750			3.0
5	2.00	2 7/16	1/2	Precision	05202-61-08	840	05202-60-08	1,050			3.0
6	2.00	2 7/16	1/2	Precision	06202-61-08	960	06202-60-08	1,200	06202-63-08	1,440	4.5
6	3.00	3 1/2	3/4	Precision	06302-61-12	1,640	06302-60-12	2,050	06302-63-12	2,460	9.5
8	2.00	2 7/16	1/2	Precision	08202-61-08	1,240	08202-60-08	1,550	08202-63-08	1,860	8.0
8	2.50	3 1/2	3/4	Precision	08252-61-12	1,640	08252-60-12	2,050			9.5
8	3.00	3 1/2	3/4	Precision	08302-61-12	2,000	08302-60-12	2,500	08302-63-12	3,000	12.5
8	3.00	3 1/2	1	Precision	08302-61-16	2,000	08302-60-16	2,500	08302-63-16	3,000	12.5
10	3.00	3 1/2	3/4	Precision	10302-61-12	2,400	10302-60-12	3,000	10302-63-12	3,600	16.0
10	3.00	3 1/2	1	Precision	10302-61-16	2,400	10302-60-16	3,000	10302-63-16	3,600	16.0
12	3.00	3 1/2	3/4	Precision	12302-61-12	2,800	12302-60-12	3,500			21.0
12	3.00	3 1/2	1	Precision	12302-61-16	2,800	12302-60-16	3,500			21.0
12	3.00	3 1/2	1 1/4	Precision	12302-61-20	2,800	12302-60-20	3,500			21.0

ROUND TREAD ERGO WHEELS

WHEEL				PART NO.	CAPACITY	PART NO.	CAPACITY	PART NO.	CAPACITY		
Dia.	Width	Hub Length	Bore	Bearing	T/R Soft	Capacity	Std. Poly	Capacity	Hard Poly	Capacity	Wt.
6	2.00	2 7/16	1/2	Precision	06202-51-08	800	06202-50-08	1,000	06202-53-08	1,200	4.0
8	2.00	2 7/16	1/2	Precision	08202-51-08	1,000	08202-50-08	1,240	08202-53-08	1,500	5.5
10	2.00	3 1/2	3/4	Precision	10202-61-08	1,250	10202-60-12	1,500			12.0
12	1.75	3 1/2	3/4	Precision	12172-61-08	1,500	12172-60-08	1,700			18.0





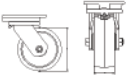
CASTER CONCEPTS

Beyond Standard.

STANDARD PROFILE POLY WHEELS

5,040 maximum capacity LBS

Table header with columns: WHEEL, PART NO., CAPACITY, PART NO., CAPACITY, PART NO., CAPACITY, PART NO., CAPACITY



Main product table with columns: Dia., Width, Hub Length, Bore, Bearing, T/R Soft, Capacity, Std Poly, Capacity, Hard Poly, Capacity, HPPT, Capacity, Wt.



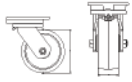
CASTER CONCEPTS

Beyond Standard.

STANDARD PROFILE POLY WHEELS

5,040 maximum capacity LBS

WHEEL				PART NO.	CAPACITY	PART NO.	CAPACITY	PART NO.	CAPACITY	PART NO.	CAPACITY
-------	--	--	--	----------	----------	----------	----------	----------	----------	----------	----------



Dia.	Width	Hub Length	Bore	Bearing	T/R Soft	Capacity	Std Poly	Capacity	Hard Poly	Capacity	HPPT	Capacity	Wt.
8	4.00	4 1/4	1 1/2	Roller	08401-61-24	3,040	08401-60-24	3,800	08401-63-24	4,560	08401-90-24	4100	20.0
8	4.00	4 1/2	1	Tapered	08409-61-16	3,040	08409-60-16	3,800	08409-63-16	4,560	08409-90-16	4100	20.0
8	4.00	4 1/2	1 1/4	Tapered	08409-61-20	3,040	08409-60-20	3,800	08409-63-20	4,560	08409-90-20	4100	20.0
10	3.00	3 1/4	1 8/9		10300-61-31	2,400	10300-60-31	3,000	10300-63-31	3,600	10300-90-31	3450	16.0
10	3.00	3 1/4	1	Roller	10301-61-16	2,400	10301-60-16	3,000	10301-63-16	3,600	10301-90-16	3450	16.0
10	3.00	3 1/4	1 1/4	Roller	10301-61-20	2,400	10301-60-20	3,000	10301-63-20	3,600	10301-90-20	3450	16.0
10	3.00	3 1/2	3/4	Tapered	10309-61-12	2,400	10309-60-12	3,000	10309-63-12	3,600	10309-90-12	3450	16.0
10	3.00	3 1/2	1	Tapered	10309-61-16	2,400	10309-60-16	3,000	10309-63-16	3,600	10309-90-16	3450	16.0
10	3.00	3 1/2	1 1/4	Tapered	10309-61-20	2,400	10309-60-20	3,000	10309-63-20	3,600	10309-90-20	3450	16.0
10	4.00	4 1/4	2 4/9		10400-61-39	3,360	10400-60-39	4,200	10400-63-39	5,040	10400-90-39	4600	23.0
10	4.00	4 1/4	1 1/4	Roller	10401-61-20	3,360	10401-60-20	4,200	10401-63-20	5,040	10401-90-20	4600	23.0
10	4.00	4 1/4	1 1/2	Roller	10401-61-24	3,360	10401-60-24	4,200	10401-63-24	5,040	10401-90-24	4600	23.0
10	4.00	4 1/2	1	Tapered	10409-61-16	3,360	10409-60-16	4,200	10409-63-16	5,040	10409-90-16	4600	23.0
10	4.00	4 1/2	1 1/4	Tapered	10409-61-20	3,360	10409-60-20	4,200	10409-63-20	5,040	10409-90-20	4600	23.0
12	3.00	3 1/4	1 8/9		12300-61-31	2,800	12300-60-31	3,500	12300-63-31	4,200	12300-90-31	3800	21.0
12	3.00	3 1/4	1	Roller	12301-61-16	2,800	12301-60-16	3,500	12301-63-16	4,200	12301-90-16	3800	21.0
12	3.00	3 1/4	1 1/4	Roller	12301-61-20	2,800	12301-60-20	3,500	12301-63-20	4,200	12301-90-20	3800	21.0
12	3.00	3 1/2	3/4	Tapered	12309-61-12	2,800	12309-60-12	3,500	12309-63-12	4,200	12309-90-12	3800	21.0
12	3.00	3 1/2	1	Tapered	12309-61-16	2,800	12309-60-16	3,500	12309-63-16	4,200	12309-90-16	3800	21.0
12	3.00	3 1/2	1 1/4	Tapered	12309-61-20	2,800	12309-60-20	3,500	12309-63-20	4,200	12309-90-20	3800	21.0



Conveyor transmission drive wheel



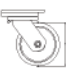






CASTER CONCEPTS

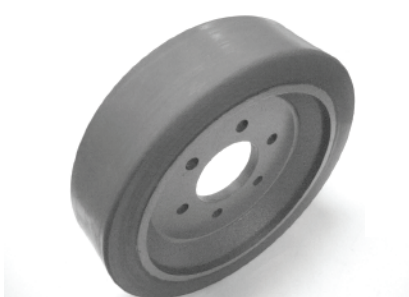
Beyond Standard.

HIGH PROFILE POLY WHEELS

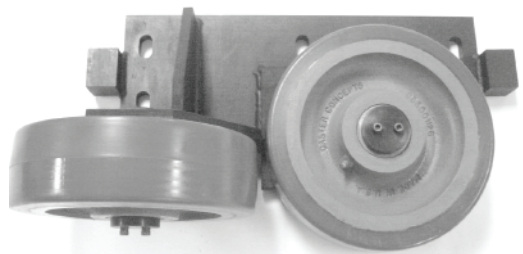
11,250 maximum capacity LBS

1" THICK TIRES

WHEEL				PART NO.		CAPACITY		PART NO.		CAPACITY		PART NO.		CAPACITY	
															
Dia.	Width	Hub Length	Bore	Bearing	T/R Soft	Capacity	Std Poly	Capacity	Hard Poly	Capacity	HPPT	Capacity	Wt.		
4	2	2 7/16		Precision	04202-66-08	600	04202-65-08	900	04202-67-08	1,200	04202-95-08	1400			
6	3	3 1/4	1 15/16		06300-66-31	2,050	06300-65-31	2,450	06300-67-31	2,950	06300-95-31	3600	9.5		
6	3	3 1/4	1	Roller	06301-66-16	2,050	06301-65-16	2,450	06301-67-16	2,950	06301-95-16	3600	9.5		
6	3	3 1/4	1 1/4	Roller	06301-66-20	2,050	06301-65-20	2,450	06301-67-20	2,950	06301-95-20	3600	9.5		
6	3	3 1/2	4-Mar	Tapered	06309-66-12	2,050	06309-65-12	2,450	06309-67-12	2,950	06309-95-12	3600	9.5		
6	3	3 1/2	1	Tapered	06309-66-16	2,050	06309-65-16	2,450	06309-67-16	2,950	06309-95-16	3600	9.5		
6	4	4 1/4	2 7/16		06400-66-39	2,400	06400-65-39	3,000	06400-67-39	3,600	06400-95-39	4600	17		
6	4	4 1/4	1 1/4	Roller	06401-66-20	2,400	06401-65-20	3,000	06401-67-20	3,600	06401-95-20	4600	17		
6	4	4 1/4	1 1/2	Roller	06401-66-24	2,400	06401-65-24	3,000	06401-67-24	3,600	06401-95-24	4600	17		
6	4	4 1/2	1	Tapered	06409-66-16	2,400	06409-65-16	3,000	06409-67-16	3,600	06409-95-16	4600	17		
6	4	4 1/2	1 1/4	Tapered	06409-66-20	2,400	06409-65-20	3,000	06409-67-20	3,600	06409-95-20	4600	17		
6	5	5 1/4	2 7/16		06500-66-39	2,960	06500-65-39	3,700	06500-67-39	4,400	06500-95-39	5800	20		
6	5	5 1/4	1 1/4	Roller	06501-66-20	2,960	06501-65-20	3,700	06501-67-20	4,400	06501-95-20	5800	20		
6	5	5 1/4	1 1/2	Roller	06501-66-24	2,960	06501-65-24	3,700	06501-67-24	4,400	06501-95-24	5800	20		
6	5	5 1/2	1	Tapered	06509-66-16	2,960	06509-65-16	3,700	06509-67-16	4,400	06509-95-16	5800	20		
6	5	5 1/2	1 1/4	Tapered	06509-66-20	2,960	06509-65-20	3,700	06509-67-20	4,400	06509-95-20	5800	20		
8	3	3 1/4	1 15/16		08300-66-31	2,480	08300-65-31	3,100	08300-67-31	3,500	08300-95-31	4300	17		
8	3	3 1/4	1	Roller	08301-66-16	2,480	08301-65-16	3,100	08301-67-16	3,500	08301-95-16	4300	17		
8	3	3 1/4	1 1/4	Roller	08301-66-20	2,480	08301-65-20	3,100	08301-67-20	3,500	08301-95-20	4300	17		
8	3	3 1/2	4-Mar	Tapered	08309-66-12	2,480	08309-65-12	3,100	08309-67-12	3,500	08309-95-12	4300	17		
8	3	3 1/2	1	Tapered	08309-66-16	2,480	08309-65-16	3,100	08309-67-16	3,500	08309-95-16	4300	17		
10	3	3 1/4	2 7/16		10300-69-39	2,960	10300-68-39	3,700	10300-67-39	4,440	10300-98-39	4800	24		
10	3	3 1/4	1 15/16		10300-66-31	2,960	10300-65-31	3,700	10300-67-31	4,400	10300-95-31	4800	24		
10	3	3 1/4	1	Roller	10301-66-16	2,960	10301-65-16	3,700	10301-67-16	4,400	10301-95-16	4800	24		
10	3	3 1/4	1 1/4	Roller	10301-66-20	2,960	10301-65-20	3,700	10301-67-20	4,400	10301-95-20	4800	24		
10	3	3 1/4	1 1/2	Roller	10301-69-24	2,960	10301-68-24	3,700	10301-67-24	4,400	10301-98-24	4800	24		
10	3	3 1/2	4-Mar	Tapered	10309-66-12	2,960	10309-65-12	3,700	10309-67-12	4,440	10309-95-12	4800	24		
10	3	3 1/2	1	Tapered	10309-66-16	2,960	10309-65-16	3,700	10309-67-16	4,440	10309-95-16	4800	24		
10	3	3 1/2	1 1/4	Tapered	10309-69-20	2,960	10309-68-20	3,700	10309-67-20	4,440	10309-98-20	4800	24		
10	4	4 1/4	2 7/16		10400-66-39	4,000	10400-65-39	5,000	10400-67-39	6,000	10400-95-39	6500	33		
10	4	4 1/4	1 1/4	Roller	10401-66-20	4,000	10401-65-20	5,000	10401-67-20	6,000	10401-95-20	6500	33		
10	4	4 1/4	1 1/2	Roller	10401-66-24	4,000	10401-65-24	5,000	10401-67-24	6,000	10401-95-24	6500	33		
10	4	4 1/2	1	Tapered	10409-66-16	4,000	10409-65-16	5,000	10409-67-16	6,000	10409-95-16	6500	33		
10	4	4 1/2	1 1/4	Tapered	10409-66-20	4,000	10409-65-20	5,000	10409-67-20	6,000	10409-95-20	6500	33		
10	5	5 1/4	2 7/16		10500-66-39	4,800	10500-65-39	6,000	10500-67-39	7,200	10500-95-39	7900	45		
10	5	5 1/4	1 1/4	Roller	10501-66-20	4,800	10501-65-20	6,000	10501-67-20	7,200	10501-95-20	7900	45		
12	3	3 1/4	2 7/16		12300-66-39	3,080	12300-65-39	3,850	12300-67-39	4,620	12300-95-39	5250	24		
12	3	3 1/4	1 1/4	Roller	12301-66-20	3,080	12301-65-20	3,850	12301-67-20	4,620	12301-95-20	5250	24		
12	3	3 1/4	1 1/2	Roller	12301-66-24	3,080	12301-65-24	3,850	12301-67-24	4,620	12301-95-24	5250	24		
12	3	3 1/2	1	Tapered	12309-66-16	3,080	12309-65-16	3,850	12309-67-16	4,620	12309-95-16	5250	24		
12	3	3 1/2	1 1/4	Tapered	12309-66-20	3,080	12309-65-20	3,850	12309-67-20	4,620	12309-95-20	5250	24		



T/R Compound used as Skillet Drive wheels



Value Added: Complete Vertical Drop Lift Elevator guide wheel assembly



CASTER CONCEPTS

Beyond Standard.

HIGH PROFILE POLY WHEELS

11,250 maximum capacity LBS

1" THICK TIRES

Table with columns: WHEEL, PART NO., CAPACITY, PART NO., CAPACITY, PART NO., CAPACITY, PART NO., CAPACITY. Includes icons for different wheel types and a detailed list of specifications including Dia., Width, Hub Length, Bore, Bearing, T/R Soft, Capacity, Std Poly, Hard Poly, HPPT, and Wt.

All dimensions are in inches. All weights are in pounds.