



FEATURES

Bearings: Roller, tapered roller
Temperature: Maximum to 800° with proper bearings and lubrication.
Standard: All 1-1/2" and 2" width wheels with 3/4" roller bearing are supplied with 1/2" spanner bushing.

BENEFITS

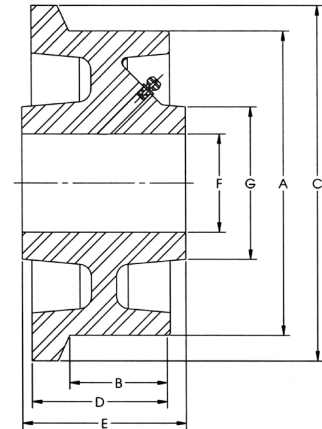
The flanged wheel is designed to operate on steel tracking to minimize guidance and rolling effort. These wheels are constructed of premium cast iron and steel for high strength and long wear. Various bore sizes are available for use with keyway or a variety of bearings.

APPLICATIONS

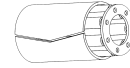
Flanged wheels are excellent for precise alignment of work, captive turntables or repetitive processes, including foundry cooling lines.



06151-18-12 shown



WHEEL					FLANGE			CAPACITY		PART NUMBER				
-------	--	--	--	--	--------	--	--	----------	--	-------------	--	--	--	--



Dia. A	Width B	Dia. C	Width D	Hub Length E	Bore F	Hub. Dia. G	Straight Roller	Precision Tapered	Less Bearing	Wt. LBS
-----------	------------	-----------	------------	-----------------	-----------	----------------	-----------------	-------------------	--------------	------------

SINGLE FLANGED WHEELS

3.50	1.31	4.50	1.69	1,000	1 15/16	3/4	2 1/8	03101-18-12			5.0
3.50	1.31	4.50	1.69	1,000	1 15/16	1 3/16	2 1/8			03100-18-19	5.0
4.00	2.00	5.25	3.00	5,000	3 1/2	1 1/4	2 1/2		04209-18-20		10.0
4.00	2.00	5.25	3.00	5,000	3 1/2	1	2 1/2		04209-18-16		10.0
4.50	2.25	5.50	3.00	5,000	3 1/4	2 7/16	2 1/2			04258-18-39	15.0
4.50	2.25	5.50	3.00	5,000	3 1/2	1	3 3/4		04259-18-16		15.0
4.50	2.25	5.50	3.00	5,000	3 1/2	1 1/4	3 3/4		04259-18-20		15.0
4.50	2.25	5.50	3.00	5,000	3 1/4	1 15/16	3 3/4			04250-18-31	15.0
4.50	2.25	5.50	3.00	4,000	3 1/4	1	3 3/4	04251-18-16			15.0
4.50	2.25	5.50	3.00	4,000	3 1/4	1 1/4	3 3/4	04251-18-20			15.0
5.00	2.06	6.00	2.69	6,000	3 1/4	1 1/4	3 7/8	05201-28-20			15.0
5.00	2.06	6.00	2.69	6,000	3 1/4	1 1/2	3 7/8	05201-28-24			15.0
5.00	2.06	6.00	2.69	10,000	3 1/4	2 7/16	3 7/8			05208-28-39	15.0
5.00	2.06	6.00	2.69	10,000	3 1/2	1	3 7/8		05209-28-16		15.0
5.00	2.06	6.00	2.69	10,000	3 1/2	1 1/4	3 7/8		05209-28-20		15.0
6.00	1.63	6.75	2.00	900	2 3/16	1 3/16	1 3/4			06150-18-19	18.0
6.00	1.63	6.75	2.00	900	2 3/16	3/4	1 3/4	06151-18-12			18.0
6.13	1.69	7.00	2.13	5,000	2 3/4	1 15/16	3			06200-18-31	24.0
6.13	1.69	7.00	2.13	4,000	2 3/4	1 1/4	3	06201-18-20			24.0
6.13	1.69	7.00	2.13	5,000	3	3/4	3		06209-18-12		24.0
6.13	1.69	7.00	2.13	5,000	3	1	3		06209-18-16		24.0
6.00	2.00	7.00	2.75	3,500	3 1/4	1 15/16	3			06250-18-31	16.0
6.00	2.00	7.00	2.75	3,500	3 1/4	1	3	06251-18-16			16.0
6.00	2.00	7.00	2.75	3,500	3 1/4	1 1/4	3	06251-18-20			16.0
6.00	2.00	7.00	2.75	3,500	3 1/2	3/4	3		06259-18-12		16.0
6.00	2.00	7.00	2.75	3,500	3 1/2	1	3		06259-18-16		16.0
7.87	2.25	9.25	2.75	3,500	3 1/4	2 7/16	3 3/4			07250-18-39	29.0
7.87	2.25	9.25	2.75	3,500	3 1/4	1 1/4	3 3/4	07251-18-20			29.0
7.87	2.25	9.25	2.75	3,500	3 1/4	1 1/2	3 3/4	07251-18-24			29.0
7.87	2.25	9.25	2.75	3,500	3 1/2	1	3 3/4		07259-18-16		29.0
7.87	2.25	9.25	2.75	3,500	3 1/2	1 1/4	3 3/4		07259-18-20		29.0
7.87	1.75	8.63	2.25	3,000	2 1/2	1 3/16	2 7/8			08200-18-19	27.0
7.87	1.75	8.63	2.25	3,000	2 1/2	1 15/16	2 7/8			08200-18-31	27.0
7.87	1.75	8.63	2.25	3,000	2 1/2	3/4	2 7/8	08201-18-12			27.0



CASTER CONCEPTS

FLANGED WHEELS

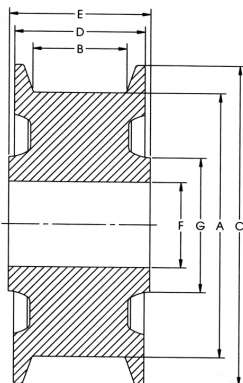
12,000 maximum capacity LBS

WHEEL FLANGE CAPACITY PART NUMBER

Dia. A	Width B	Dia. C	Width D	Hub Length E	Bore F	Hub. Dia. G											
7.87	1.75	8.63	2.25	3,000	2 1/2	1	2 7/8	08201-18-16									27.0
7.87	1.75	8.63	2.25	3,000	2 1/2	1 1/4	2 7/8	08201-18-20									27.0
7.87	1.75	8.63	2.25	3,000	2 3/4	3/4	2 7/8				08209-18-12						27.0
8.00	2.38	9.00	3.00	15,000	3 1/4	2 7/16	2 7/8							08200-28-39			48.0
8.00	2.38	9.00	3.00	6,000	3 1/4	1 1/4	5	08201-28-20									48.0
8.00	2.38	9.00	3.00	6,000	3 1/4	1 1/2	5	08201-28-24									48.0
8.00	2.38	9.00	3.00	10,000	3 1/2	1	5				08209-28-16						48.0
8.00	2.38	9.00	3.00	10,000	3 1/2	1 1/4	5				08209-28-20						48.0
8.00	2.25	9.50	3.00	3,500	3 1/4	2 7/16	3 3/4							08250-18-39			33.0
8.00	2.25	9.50	3.00	3,500	3 1/4	1 1/4	3 3/4	08251-18-20									33.0
8.00	2.25	9.50	3.00	3,500	3 1/4	1 1/2	3 3/4	08251-18-24									33.0
8.00	2.25	9.50	3.00	3,500	3 1/2	1	3 3/4				08259-18-16						33.0
8.00	2.25	9.50	3.00	3,500	3 1/2	1 1/4	3 3/4				08259-18-20						33.0
10.00	4.00	12.00	5.00	12,000	6	3 1/8	4 1/2							10408-18-50			90.0
10.00	4.00	12.00	5.00	12,000	6 1/4	1 1/4	4 1/2				10409-18-20						90.0
10.00	4.00	12.00	5.00	12,000	6 1/4	1 1/2	4 1/2				10409-18-24						90.0
14.88	2.56	16.88	3.38	8,000	4 1/4	2 7/16	4 1/2							15250-18-39			100.0
14.88	2.56	16.88	3.38	8,000	4 1/4	1 1/4	4 1/2	15251-18-20									100.0
14.88	2.56	16.88	3.38	8,000	4 1/4	1 1/2	4 1/2	15251-18-24									100.0
14.88	2.56	16.88	3.38	8,000	4 1/2	1	4 1/2				15259-18-16						100.0
14.88	2.56	16.88	3.38	8,000	4 1/2	1 1/4	4 1/2				15259-18-20						100.0

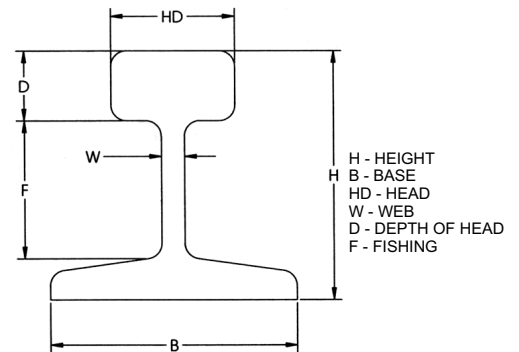
DUAL FLANGED WHEELS

5.00	1.69	6.00	3.00	10,000	3 1/4	2 7/16	3 7/8							05200-29-39			17.0
5.00	1.69	6.00	3.00	6,000	3 1/4	1 1/4	3 7/8	05201-29-20									17.0
5.00	1.69	6.00	3.00	6,000	3 1/4	1 1/2	3 7/8	05201-29-24									17.0
5.00	1.69	6.00	3.00	10,000	3 1/2	1	3 7/8				05209-29-16						17.0
5.00	1.69	6.00	3.00	10,000	3 1/2	1 1/4	3 7/8				05209-29-20						17.0
6.00	2.13	7.25	3.00	6,000	3 1/4	1 15/16	3							06200-19-31			26.0
6.00	2.13	7.25	3.00	5,000	3 1/4	1	3	06201-19-16									26.0
6.00	2.13	7.25	3.00	5,000	3 1/4	1 1/4	3	06201-19-20									26.0
6.00	2.13	7.25	3.00	5,000	3 1/2	3/4	3				06209-19-12						26.0
6.00	2.13	7.25	3.00	6,000	3 1/2	1	3				06209-19-16						26.0
8.00	1.76	9.00	3.00	15,000	3 1/4	2 7/16	5							08200-29-39			50.0
8.00	1.76	9.00	3.00	6,000	3 1/4	1 1/4	5	08201-29-20									50.0
8.00	1.76	9.00	3.00	6,000	3 1/4	1 1/2	5	08201-29-24									50.0
8.00	1.76	9.00	3.00	15,000	3 1/4	2 7/16	5							08208-29-39			50.0
8.00	1.76	9.00	3.00	10,000	3 1/2	1	5				08209-29-16						50.0
8.00	1.76	9.00	3.00	10,000	3 1/2	1 1/4	5				08209-29-20						50.0
10.00	3.00	12.00	5.00	12,000	6	3 1/8	4 1/2							10308-19-50			95.0
10.00	3.00	12.00	5.00	12,000	6 1/4	1 1/4	4 1/2				10309-19-20						95.0
10.00	3.00	12.00	5.00	12,000	6 1/4	1 1/2	4 1/2				10309-19-24						95.0



RAIL SIZES

WEIGHT LB/FT	H	B	HD	W	D	F
12	2	2	1	3/16	9/16	1-3/32
16	2-3/8	2-3/8	1-11/64	7/32	41/64	1-23/64
20	2-5/8	2-5/8	1-11/32	1/4	23/32	1-15/32
25	2-3/4	2-3/4	1-1/2	19/64	25/32	1-31/64
30	3-1/8	3-1/8	1-11/16	21/64	7/8	1-23/32
40	3-1/2	3-1/2	1-7/8	25/64	1-1/64	1-55/64
60	4-1/4	4-1/4	2-3/8	31/64	1-7/32	2-17/64
80	5	5	2-1/2	35/64	1-1/2	2-5/8
85	5-3/16	5-3/16	2-9/16	9/16	1-35/64	2-3/4
90	5-5/8	5-1/8	2-9/16	9/16	1-15/32	3-5/32
100	6	5-3/8	2-11/16	9/16	1-21/32	3-9/32



CASTER CONCEPTS WILL MODIFY ANY CASTER TO MEET CUSTOMER SPECIFICATIONS

Caster Concepts, Inc., 16000 E. Michigan Ave., Albion, MI 49224 (517) 629-8838 Facsimile (800) 800-0036 www.casterconcepts.com