



# BRAKE TYPES



**Cam (C)**  
The cam brake is used on lighter duty casters. This brake provides an efficient, cost-effective hub braking system.



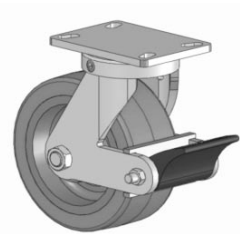
**Single Side (SS)**  
The single-side brake is an economical brake for medium heavy-duty casters with 6 to 12 inch diameter wheels.



**Dual Side (DS)**  
The dual side brake is a cost-effective hub brake. Each brake lever must be engaged by the operator.



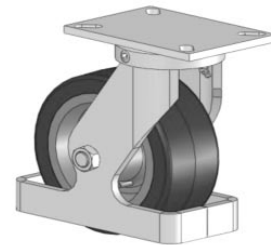
**Wrap Around (W)**  
The wrap around brake provides total access to the braking system regardless of the caster orientation.



**Poly Lock (P)**  
A polyurethane cam roller engages a steel brake shoe against the tread of the wheel providing positive engagement of the tread. Levers can be mounted "toe out" (shown) or reversed to "toe in."



**Pneumatic Poly Cam (PP)**  
Similar to the standard poly cam brake in operation, the pneumatic poly cam brake offers a greater movement of the brake shoe to compensate for pneumatic tires. The brake is foot operated.



**Toe Guard (TG)**  
The toe guard is mounted approximately one half of an inch off the floor to help protect workers' feet. It can be used in both manual and power applications.



**Face Contact (F)**  
The face contact brake is activated by tightening the brake shoe against the wheel.