



# WHEELS AT A GLANCE



**Forged Steel**  
Fine grain forged steel wheels are precision machined to offer the greatest load capacity, impact strength and rollability. Precision tapered bearings compliment the characteristics of these wheels.



**Cast Iron**  
Precision machined cast iron wheels feature premium Class 30 gray iron with a heavy duty cross sections. These wheels are excellent for high heat applications.



**Ductile Iron**  
Ductile iron wheels feature many of the same characteristics of cast iron; however, the ductile iron wheel has higher tensile and yield strengths. Resists breaking or chipping.



**Polyurethane**  
Polyurethane wheels feature a higher capacity material than rubber, provide longer wear, and will not damage your floors like cast iron or steel. A wide variety of liquid cast polyurethane wheels are offered.



**Mold On Rubber**  
Rubber offers a cost effective alternative to polyurethane while providing a cushioned and quiet ride for the product being transported. Neoprene and high load compounds are also available.



**Softech**  
Softech wheels feature a soft, non-marking tire on a rust-free polyolefin core. Softech wheels reject floor debris and are highly resistant to most chemicals.



**NyTec-MD**  
NyTec wheels provide a tough material which can handle up to 80% the weight of steel or cast iron. NyTec has excellent load carrying capacities and resists corrosion. NyTec provides a long wearing material and is especially suitable when maintenance is an issue.



**Phenolic Resin**  
Phenolic resin wheels offer a load carrying capacity approaching that of cast iron or steel wheels. Phenolic resin wheels are a cost effective alternative with increased rollability and will not damage floors.



**Solid Elastomer**  
Solid, non-marking polyurethane is used for high load capacities. These wheels are harder than soft rubber. They will not damage floors. Solid elastomer wheels do not develop flat spots under standing loads.



### WHEELS AT A GLANCE cont.



**V-Groove**  
 “V” grooves are machined from either cast iron or hot forged steel wheels. V-grooves work on track or off track and are essential where precise alignment or indexing of equipment is necessary.



**Flanged**  
 Single and dual-flanged wheels operate on a rail for locating fixtures in a precise position for indexing through a work cycle. Premium cast iron and steel is used for the wheel material to provide high strength and long wear.



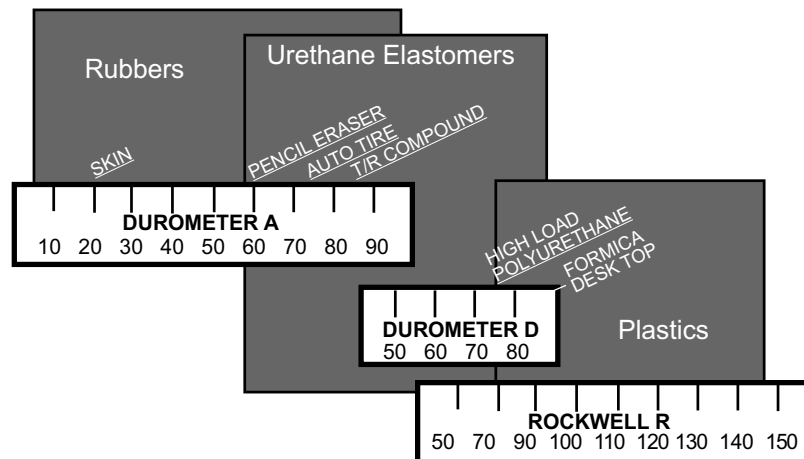
**Pneumatic**  
 Pneumatic wheels offer the highest cushioning, shock absorbing caster/wheel, without moving to a more expensive spring loaded caster. Capacities of pneumatics are limited due to the soft cushioning characteristics of the wheel.



**Drive/Keyway**  
 Drive/Keyway wheels are offered from 3” to 18” diameter. Bore sizes from 1/2” to 2-7/16”. Drive surfaces of poly, rubber, or steel. Excellent for power transmission applications.

## HARDNESS COMPARISON CHART

Wheel Type	Tread Material	Durometer	Scale
N/A	Soft Tread Rubber	70 – 80	A
30 & 35	Phenolics	145 – 150	R
60 & 65 & 68	Polyurethane	90 – 100	A
61 & 66 & 69	Soft Polyurethane	80 – 90	A
63 & 67	Hard Polyurethane	70	D
70	Rubber	65 – 75	A
71	Aluminum Core/Rubber	70 – 80	A
72	Softech	70	A
73	Neoprene	65 – 75	A
76	Pneumatic	55 – 60	A



WHEELS AT A GLANCE/HARDNESS

**CASTER CONCEPTS WILL MODIFY ANY CASTER TO MEET CUSTOMER SPECIFICATIONS**

Caster Concepts, Inc., 16000 E. Michigan Ave., Albion, MI 49224 (517) 629-8838 Facsimile (800) 800-0036 www.casterconcepts.com



# V-GROOVE WHEELS

15,000 maximum capacity LBS

## FEATURES

**Bearings:** Roller, tapered, plain  
**Temperature:** Maximum to 800° F with proper bearing and lubrication.  
**Standard:** All 1-1/2" and 2" width wheels with 3/4" roller bearings are supplied with 1/2" spanner bushing.

## BENEFITS

V-groove wheels are constructed of premium G-3000 gray iron castings or hot forged C-1030 steel. The 90 degree grooves are accurately machined into the face of the wheels. A relief groove at the base of the "V" directs the load to each face of the angle track when in use. V-groove wheels can be used on a track, flat surface or both without fear of damage.

Exceptionally strong and ideal for heavy loads, the V-groove wheels are able to be machined out for keyway or various bore sizes.

Wheel material codes: Cast iron (15); heavy duty cast iron (16); forged steel (25); heavy duty forged steel (26)



06309-25-16 shown

## APPLICATIONS

Excellent for guided industrial applications, assembly lines, paint lines and material handling where precise alignment is necessary.

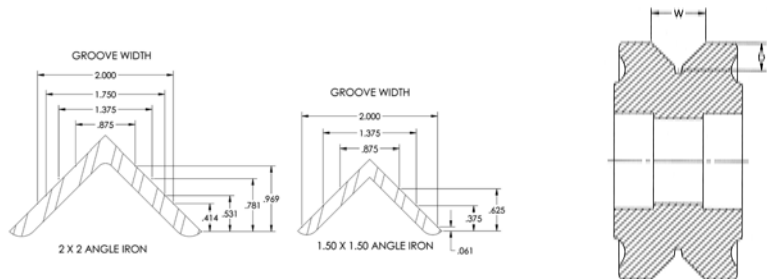
WHEEL		CAPACITY				PART NUMBER			
Dia.	Width	Hub Length	Bore	Width x Depth	Straight Roller	Precision Tapered	Less Bearing	Wt.	
4	2.00	1,000	2 3/16	7/8 x 7/16			04200-15-19	5.0	
4	2.00	1,000	2 3/16	7/8 x 7/16	04201-15-12			5.0	
6	2.00	1,000	2 3/16	7/8 x 7/16			06200-15-19	5.0	
6	2.00	1,000	2 3/16	7/8 x 7/16	06201-15-12			5.0	
6	2.50	2,500	3 1/4	7/8 x 7/16			06250-15-31	10.0	
6	2.50	2,500	3 1/4	7/8 x 7/16	06251-15-16			10.0	
6	2.50	2,500	3 1/4	7/8 x 7/16	06251-15-20			10.0	
6	2.50	2,500	3 1/2	7/8 x 7/16		06259-15-12		10.0	
6	3.00	15,000	3 1/4	1-3/8 x 11/16			06300-25-39	20.0	
6	3.00	6,000	3 1/4	1-3/8 x 11/16	06301-25-20			20.0	
6	3.00	6,000	3 1/4	1-3/8 x 11/16	06301-25-24			20.0	
6	3.00	10,000	3 1/2	1-3/8 x 11/16		06309-25-16		20.0	
6	3.00	10,000	3 1/2	1-3/8 x 11/16		06309-25-20		20.0	
6	3.00	15,000	3 1/4	1-3/8 x 11/16			06308-26-50	20.0	
6	3.00	15,000	3 1/2	1-3/8 x 11/16		06309-26-20		20.0	
6	3.00	15,000	3 1/2	1-3/8 x 11/16		06309-26-24		20.0	
8	2.50	2,500	3 1/4	7/8 x 7/16			08250-15-31	20.0	
8	2.50	2,500	3 1/4	7/8 x 7/16	08251-15-16			20.0	
8	2.50	2,500	3 1/4	7/8 x 7/16	08251-15-20			20.0	
8	2.50	2,500	3 1/2	7/8 x 7/16		08259-15-12		20.0	
8	3.00	4,000	3 1/4	7/8 x 7/16			08300-15-31	22.0	
8	3.00	4,000	3 1/4	7/8 x 7/16	08301-15-16			22.0	
8	3.00	4,000	3 1/4	7/8 x 7/16	08301-15-20			22.0	
8	3.00	4,000	3 1/2	7/8 x 7/16		08309-15-16		22.0	
8	3.00	4,000	3 1/2	7/8 x 7/16		08309-15-20		22.0	
8	3.00	4,500	3 1/4	1-3/8 x 11/16			08300-16-39	24.0	
8	3.00	4,500	3 1/4	1-3/8 x 11/16	08301-16-20			24.0	
8	3.00	4,500	3 1/4	1-3/8 x 11/16	08301-16-24			24.0	
8	3.00	4,500	3 1/2	1-3/8 x 11/16		08309-16-16		24.0	
8	3.00	4,500	3 1/2	1-3/8 x 11/16		08309-16-20		24.0	



**WHEEL CAPACITY** **PART NUMBER**

Dia.	Width	Hub Length	Bore	Width x Depth	Straight Roller	Tapered Roller	Less Bearing	Wt.			
8	3.00	5,000	3 1/4	1 15/16	7/8 x 7/16		08300-25-31	24.0			
8	3.00	5,000	3 1/4	1	7/8 x 7/16	08301-25-16		24.0			
8	3.00	5,000	3 1/4	1 1/4	7/8 x 7/16	08301-25-20		24.0			
8	3.00	5,000	3 1/2	3/4	7/8 x 7/16		08309-25-12	24.0			
8	3.00	5,000	3 1/2	1	7/8 x 7/16		08309-25-16	24.0			
8	4.00	8,400	4 1/4	2 7/16	1-3/4 x 7/8		08400-25-39	30.0			
8	4.00	8,400	4 1/4	1 1/4	1-3/4 x 7/8	08401-25-20		30.0			
8	4.00	8,400	4 1/4	1 1/2	1-3/4 x 7/8	08401-25-24		30.0			
8	4.00	10,000	4 1/2	1	1-3/4 x 7/8		08409-25-16	30.0			
8	4.00	10,000	4 1/2	1 1/4	1-3/4 x 7/8		08409-25-20	30.0			
8	4.00	15,000	4 1/4	3 1/8^	1-3/4 x 7/8		08408-26-50	31.0			
8	4.00	15,000	4 1/2	1 1/4	1-3/4 x 7/8		08409-26-20	31.0			
8	4.00	15,000	4 1/2	1 1/2	1-3/4 x 7/8		08409-26-24	31.0			
10	3.00	3,000	3 1/4	1 15/16	1-3/8 x 11/16		10300-15-31	25.0			
10	3.00	3,000	3 1/4	1	1-3/8 x 11/16	10301-15-16		25.0			
10	3.00	3,000	3 1/4	1 1/4	1-3/8 x 11/16	10301-15-20		25.0			
10	3.00	3,000	3 1/2	3/4	1-3/8 x 11/16		10309-15-12	25.0			
10	3.00	3,500	3 1/4	2 7/16	1-3/8 x 11/16		10300-16-39	25.0			
10	3.00	3,500	3 1/4	1 1/4	1-3/8 x 11/16	10301-16-20		25.0			
10	3.00	3,500	3 1/4	1 1/2	1-3/8 x 11/16	10301-16-24		25.0			
10	3.00	3,500	3 1/2	1	1-3/8 x 11/16		10309-16-16	25.0			
10	3.00	3,500	3 1/2	1 1/4	1-3/8 x 11/16		10309-16-20	25.0			
10	3.00	5,000	3 1/4	1 15/16	1-3/8 x 11/16		10300-25-31	27.0			
10	3.00	5,000	3 1/4	1	1-3/8 x 11/16	10301-25-16		27.0			
10	3.00	5,000	3 1/4	1 1/4	1-3/8 x 11/16	10301-25-20		27.0			
10	3.00	5,000	3 1/2	3/4	1-3/8 x 11/16		10309-25-12	27.0			
10	3.00	5,000	3 1/2	1	1-3/8 x 11/16		10309-25-16	27.0			
10	3.00	6,000	3 1/4	2 7/16	1-3/8 x 11/16		10300-26-39	27.0			
10	3.00	6,000	3 1/4	1 1/4	1-3/8 x 11/16	10301-26-20		27.0			
10	3.00	6,000	3 1/4	1 1/2	1-3/8 x 11/16	10301-26-24		27.0			
10	3.00	6,000	3 1/2	1	1-3/8 x 11/16		10309-26-16	27.0			
10	3.00	6,000	3 1/2	1 1/4	1-3/8 x 11/16		10309-26-20	27.0			
10	4.00	8,400	4 1/4	2 7/16	1-3/4 x 7/8		10400-25-39	48.0			
10	4.00	8,400	4 1/4	1 1/4	1-3/4 x 7/8	10401-25-20		48.0			
10	4.00	8,400	4 1/4	1 1/2	1-3/4 x 7/8	10401-25-24		48.0			
10	4.00	10,000	4 1/2	1	1-3/4 x 7/8		10409-25-16	48.0			
10	4.00	10,000	4 1/2	1 1/4	1-3/4 x 7/8		10409-25-20	48.0			
10	4.00	15,000	4 1/4	3 1/8^	1-3/4 x 7/8		10408-26-50	48.0			
10	4.00	15,000	4 1/2	1 1/4	1-3/4 x 7/8		10409-26-20	48.0			
10	4.00	15,000	4 1/2	1 1/2	1-3/4 x 7/8		10409-26-24	48.0			
12	5.00	9,500	5 1/4	1 1/4	2 x 1	12501-16-20*		110.0			
12	5.00	9,500	5 1/4	1 1/2	2 x 1	12501-16-24*		110.0			
12	5.00	12,000	5 1/2	1 1/4	2 x 1		12509-16-20*	110.0			
12	5.00	12,000	5 1/2	1 1/2	2 x 1		12509-16-24*	110.0			

Capacity listed is for manual operation.  
 For powered operations, consult factory.  
 ^ Dimensions for tapered bearing bore.  
 \* These wheels are ductile iron.  
 All dimensions are in inches. All weights are in pounds.





**FEATURES**

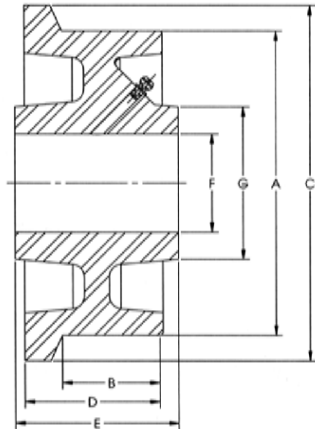
**Bearings:** Roller, tapered roller  
**Temperature:** Maximum to 800° with proper bearings and lubrication.  
**Standard:** All 1-1/2" and 2" width wheels with 3/4" roller bearing are supplied with 1/2" spanner bushing.

**BENEFITS**

The flanged wheel is designed to operate on steel tracking to minimize guidance and rolling effort. These wheels are constructed of premium cast iron and steel for high strength and long wear. Various bore sizes are available for use with keyway or a variety of bearings.



06151-18-12 shown



**APPLICATIONS**

Flanged wheels are excellent for precise alignment of work, captive turntables or repetitive processes, including foundry cooling lines.

**WHEEL      FLANGE      CAPACITY      PART NUMBER**

Dia. A	Width B	Dia. C	Width D	Hub Length E	Bore F	Hub. Dia. G	Straight Roller	Precision Tapered	Less Bearing	Wt. LBS	

SINGLE FLANGED WHEELS											
3.50	1.31	4.50	1.69	1,000	1 15/16	3/4	2 1/8	03101-18-12			5.0
3.50	1.31	4.50	1.69	1,000	1 15/16	1 3/16	2 1/8			03100-18-19	5.0
4.00	2.00	5.25	3.00	5,000	3 1/2	1 1/4	2 1/2			04209-18-20	10.0
4.00	2.00	5.25	3.00	5,000	3 1/2	1	2 1/2			04209-18-16	10.0
4.50	2.25	5.50	3.00	5,000	3 1/4	2 7/16	2 1/2			04258-18-39	15.0
4.50	2.25	5.50	3.00	5,000	3 1/2	1	3 3/4			04259-18-16	15.0
4.50	2.25	5.50	3.00	5,000	3 1/2	1 1/4	3 3/4			04259-18-20	15.0
4.50	2.25	5.50	3.00	5,000	3 1/4	1 15/16	3 3/4			04250-18-31	15.0
4.50	2.25	5.50	3.00	4,000	3 1/4	1	3 3/4	04251-18-16			15.0
4.50	2.25	5.50	3.00	4,000	3 1/4	1 1/4	3 3/4	04251-18-20			15.0
5.00	2.06	6.00	2.69	6,000	3 1/4	1 1/4	3 7/8	05201-28-20			15.0
5.00	2.06	6.00	2.69	6,000	3 1/4	1 1/2	3 7/8	05201-28-24			15.0
5.00	2.06	6.00	2.69	10,000	3 1/4	2 7/16	3 7/8			05208-28-39	15.0
5.00	2.06	6.00	2.69	10,000	3 1/2	1	3 7/8			05209-28-16	15.0
5.00	2.06	6.00	2.69	10,000	3 1/2	1 1/4	3 7/8			05209-28-20	15.0
6.00	1.63	6.75	2.00	900	2 3/16	1 3/16	1 3/4			06150-18-19	18.0
6.00	1.63	6.75	2.00	900	2 3/16	3/4	1 3/4	06151-18-12			18.0
6.13	1.69	7.00	2.13	5,000	2 3/4	1 15/16	3			06200-18-31	24.0
6.13	1.69	7.00	2.13	4,000	2 3/4	1 1/4	3	06201-18-20			24.0
6.13	1.69	7.00	2.13	5,000	3	3/4	3			06209-18-12	24.0
6.13	1.69	7.00	2.13	5,000	3	1	3			06209-18-16	24.0
6.00	2.00	7.00	2.75	3,500	3 1/4	1 15/16	3			06250-18-31	16.0
6.00	2.00	7.00	2.75	3,500	3 1/4	1	3	06251-18-16			16.0
6.00	2.00	7.00	2.75	3,500	3 1/4	1 1/4	3	06251-18-20			16.0
6.00	2.00	7.00	2.75	3,500	3 1/2	3/4	3			06259-18-12	16.0
6.00	2.00	7.00	2.75	3,500	3 1/2	1	3			06259-18-16	16.0
7.87	2.25	9.25	2.75	3,500	3 1/4	2 7/16	3 3/4			07250-18-39	29.0
7.87	2.25	9.25	2.75	3,500	3 1/4	1 1/4	3 3/4	07251-18-20			29.0
7.87	2.25	9.25	2.75	3,500	3 1/4	1 1/2	3 3/4	07251-18-24			29.0
7.87	2.25	9.25	2.75	3,500	3 1/2	1	3 3/4			07259-18-16	29.0
7.87	2.25	9.25	2.75	3,500	3 1/2	1 1/4	3 3/4			07259-18-20	29.0
7.87	1.75	8.63	2.25	3,000	2 1/2	1 3/16	2 7/8			08200-18-19	27.0
7.87	1.75	8.63	2.25	3,000	2 1/2	1 15/16	2 7/8			08200-18-31	27.0
7.87	1.75	8.63	2.25	3,000	2 1/2	3/4	2 7/8	08201-18-12			27.0



**CASTER CONCEPTS**

# FLANGED WHEELS

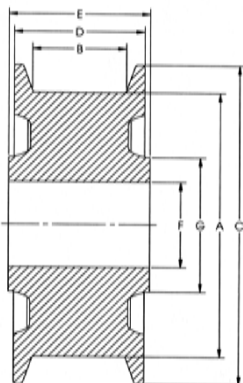
**12,000** maximum capacity  
LBS

WHEEL		FLANGE		CAPACITY						PART NUMBER	
-------	--	--------	--	----------	--	--	--	--	--	-------------	--

Dia. A	Width B	Dia. C	Width D	Hub Length E	Bore F	Hub. Dia. G			
7.87	1.75	8.63	2.25	3,000	2 1/2	1	2 7/8	08201-18-16	27.0
7.87	1.75	8.63	2.25	3,000	2 1/2	1 1/4	2 7/8	08201-18-20	27.0
7.87	1.75	8.63	2.25	3,000	2 3/4	3/4	2 7/8	08209-18-12	27.0
8.00	2.38	9.00	3.00	15,000	3 1/4	2 7/16	2 7/8	08200-28-39	48.0
8.00	2.38	9.00	3.00	6,000	3 1/4	1 1/4	5	08201-28-20	48.0
8.00	2.38	9.00	3.00	6,000	3 1/4	1 1/2	5	08201-28-24	48.0
8.00	2.38	9.00	3.00	10,000	3 1/2	1	5	08209-28-16	48.0
8.00	2.38	9.00	3.00	10,000	3 1/2	1 1/4	5	08209-28-20	48.0
8.00	2.25	9.50	3.00	3,500	3 1/4	2 7/16	3 3/4	08250-18-39	33.0
8.00	2.25	9.50	3.00	3,500	3 1/4	1 1/4	3 3/4	08251-18-20	33.0
8.00	2.25	9.50	3.00	3,500	3 1/4	1 1/2	3 3/4	08251-18-24	33.0
8.00	2.25	9.50	3.00	3,500	3 1/2	1	3 3/4	08259-18-16	33.0
8.00	2.25	9.50	3.00	3,500	3 1/2	1 1/4	3 3/4	08259-18-20	33.0
10.00	4.00	12.00	5.00	12,000	6	3 1/8	4 1/2	10408-18-50	90.0
10.00	4.00	12.00	5.00	12,000	6 1/4	1 1/4	4 1/2	10409-18-20	90.0
10.00	4.00	12.00	5.00	12,000	6 1/4	1 1/2	4 1/2	10409-18-24	90.0
14.88	2.56	16.88	3.38	8,000	4 1/4	2 7/16	4 1/2	15250-18-39	100.0
14.88	2.56	16.88	3.38	8,000	4 1/4	1 1/4	4 1/2	15251-18-20	100.0
14.88	2.56	16.88	3.38	8,000	4 1/4	1 1/2	4 1/2	15251-18-24	100.0
14.88	2.56	16.88	3.38	8,000	4 1/2	1	4 1/2	15259-18-16	100.0
14.88	2.56	16.88	3.38	8,000	4 1/2	1 1/4	4 1/2	15259-18-20	100.0

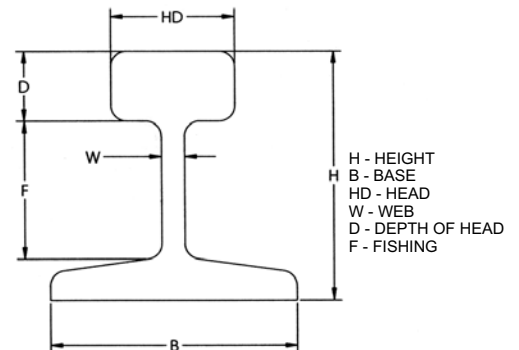
**DUAL FLANGED WHEELS**

5.00	1.69	6.00	3.00	10,000	3 1/4	2 7/16	3 7/8	05200-29-39	17.0
5.00	1.69	6.00	3.00	6,000	3 1/4	1 1/4	3 7/8	05201-29-20	17.0
5.00	1.69	6.00	3.00	6,000	3 1/4	1 1/2	3 7/8	05201-29-24	17.0
5.00	1.69	6.00	3.00	10,000	3 1/2	1	3 7/8	05209-29-16	17.0
5.00	1.69	6.00	3.00	10,000	3 1/2	1 1/4	3 7/8	05209-29-20	17.0
6.00	2.13	7.25	3.00	6,000	3 1/4	1 15/16	3	06200-19-31	26.0
6.00	2.13	7.25	3.00	5,000	3 1/4	1	3	06201-19-16	26.0
6.00	2.13	7.25	3.00	5,000	3 1/4	1 1/4	3	06201-19-20	26.0
6.00	2.13	7.25	3.00	5,000	3 1/2	3/4	3	06209-19-12	26.0
6.00	2.13	7.25	3.00	6,000	3 1/2	1	3	06209-19-16	26.0
8.00	1.76	9.00	3.00	15,000	3 1/4	2 7/16	5	08200-29-39	50.0
8.00	1.76	9.00	3.00	6,000	3 1/4	1 1/4	5	08201-29-20	50.0
8.00	1.76	9.00	3.00	6,000	3 1/4	1 1/2	5	08201-29-24	50.0
8.00	1.76	9.00	3.00	15,000	3 1/4	2 7/16	5	08208-29-39	50.0
8.00	1.76	9.00	3.00	10,000	3 1/2	1	5	08209-29-16	50.0
8.00	1.76	9.00	3.00	10,000	3 1/2	1 1/4	5	08209-29-20	50.0
10.00	3.00	12.00	5.00	12,000	6	3 1/8	4 1/2	10308-19-50	95.0
10.00	3.00	12.00	5.00	12,000	6 1/4	1 1/4	4 1/2	10309-19-20	95.0
10.00	3.00	12.00	5.00	12,000	6 1/4	1 1/2	4 1/2	10309-19-24	95.0



**RAIL SIZES**

WEIGHT LB/FT	H	B	HD	W	D	F
12	2	2	1	3/16	9/16	1-3/32
16	2-3/8	2-3/8	1-11/64	7/32	41/64	1-23/64
20	2-5/8	2-5/8	1-11/32	1/4	23/32	1-15/32
25	2-3/4	2-3/4	1-1/2	19/64	25/32	1-31/64
30	3-1/8	3-1/8	1-11/16	21/64	7/8	1-23/32
40	3-1/2	3-1/2	1-7/8	25/64	1-1/64	1-55/64
60	4-1/4	4-1/4	2-3/8	31/64	1-7/32	2-17/64
80	5	5	2-1/2	35/64	1-1/2	2-5/8
85	5-3/16	5-3/16	2-9/16	9/16	1-35/64	2-3/4
90	5-5/8	5-1/8	2-9/16	9/16	1-15/32	3-5/32
100	6	5-3/8	2-11/16	9/16	1-21/32	3-9/32



**CASTER CONCEPTS WILL MODIFY ANY CASTER TO MEET CUSTOMER SPECIFICATIONS**

Caster Concepts, Inc., 16000 E. Michigan Ave., Albion, MI 49224 (517) 629-8838 Facsimile (800) 800-0036 www.casterconcepts.com



FEATURES

These cast iron wheels are constructed of premium Class 30 gray iron for maximum load capacity and impact strength. The wheels feature heavy cross section castings for heavy duty use, abrasion resistance and a long service life. Each wheel is precision machined with rounded edges to finished tolerances.

**Standard:** All 1-1/2" and 2" wide wheels with 3/4" roller bearings are supplied with 1/2" spanner standard.

APPLICATIONS

Built for high capacity applications, the cast iron wheels can withstand extreme heat. Precision tapered bearings are available to complement the characteristics of the wheels.

OPTIONS

Wheel material codes: cast iron (10); heavy duty cast iron (11); ductile iron (12).



08301-10-16 shown

WHEEL CAPACITY			PART NUMBER					
Dia	Width	Capacity	Hub Length	Bore	Straight Roller	Precision Tapered	Less Bearing	Wt.
3	1.25	450	1 1/2	3/8			03120-10-06	2.0
3.25	1.50	400	1 5/8	3/4	03151-10-12			3.4
3.25	1.50	400	1 5/8	5/8	03151-10-10			3.4
3.25	2.00	700	2 3/16	3/4	03201-10-12			3.4
4	1.50	600	1 11/16	1/2			04150-10-08	3.4
4	1.50	600	1 5/8	5/8	04151-10-10			3.4
4	2.00	1,000	2 3/16	1 3/16			04200-10-19	4.0
4	2.00	1,000	2 3/16	3/4	04201-10-12			4.0
4	3.00	2,000	3 1/4	1 15/16			04300-10-31	7.0
4	3.00	2,000	3 1/4	1	04301-10-16			7.0
4	3.00	2,000	3 1/4	1 1/4	04301-10-20			7.0
4	3.00	2,000	3 1/2	3/4		04309-10-12		7.0
4	4.00	4,000	4 1/4	2 7/16			04400-10-39	11.0
4	4.00	4,000	4 1/4	1 1/4	04401-10-20			11.0
4	4.00	4,000	4 1/2	1		04409-10-16		11.0
4	4.00	4,000	4 1/2	1 1/4		04409-10-20		11.0
5	1.50	600	1 5/8	3/4	05151-10-12			
5	1.50	600	1 5/8	5/8	05151-10-10			
5	2.00	1,500	2 3/16	1 3/16			05200-10-19	6.0
5	2.00	1,200	2 3/16	3/4	05201-10-12			6.0
5	2.00	1,200	2 3/16	5/8	05201-10-10			
5	2.50	2,000	3 1/4	1 15/16			05250-10-31	7.5
5	2.50	2,000	3 1/4	1	05251-10-16			7.5
5	2.50	2,000	3 1/4	1 1/4	05251-10-20			7.5
5	2.50	2,000	3 1/2	3/4		05259-10-12		7.5
6	1.50	800	1 5/8	3/4	06151-10-12			
6	1.50	800	1 5/8	5/8	06151-10-10			
6	2.00	1,300	2 3/16	1 3/16			06200-10-19	6.8
6	2.00	1,300	2 3/16	3/4	06201-10-12			6.8
6	2.50	2,500	3 1/4	1 15/16			06250-10-31	12.0
6	2.50	2,500	3 1/4	1 1/4	06251-10-20			12.0
6	2.50	2,500	3 1/4	1	06251-10-16			12.0
6	2.50	2,500	3 1/2	3/4		06259-10-12		12.0
6	2.50	2,500	3 1/2	1		06259-10-16		12.0
6	3.00	2,500	3 1/4	1 15/16			06300-10-31	12.0
6	3.00	2,500	3 1/4	1	06301-10-16			12.0
6	3.00	2,500	3 1/4	1 1/4	06301-10-20			12.0
6	3.00	2,500	3 1/2	3/4		06309-10-12		12.0



WHEEL		CAPACITY	PART NUMBER					
Dia	Width	Capacity	Hub Length	Bore	Straight Roller	Precision Tapered	Less Bearing	Wt.
6	3.00	2,500	3 1/2	1		06309-10-16		12.0
7	3.00	4,000	3 1/4	1 15/16			07300-10-31	27.0
7	3.00	4,000	3 1/4	1	07301-10-16			27.0
7	3.00	4,000	3 1/4	1 1/4	07301-10-20			27.0
7	3.00	4,000	3 1/2	3/4		07309-10-12		27.0
7	3.00	6,000	3 1/4	2 7/16			07300-11-39	27.0
7	3.00	6,000	3 1/4	1 1/4	07301-11-20			27.0
7	3.00	6,000	3 1/4	1 1/2	07301-11-24			27.0
7	3.00	6,000	3 1/2	1		07309-11-16		27.0
7	3.00	6,000	3 1/2	1 1/4		07309-11-20		27.0
8	2.00	1,500	2 1/5	1 3/16			08200-10-19	7.5
8	2.00	1,500	2 1/5	3/4	08201-10-12			7.5
8	2.00	1,500	2 1/5	5/8	08201-10-10			7.5
8	3.00	3,500	3 1/4	1 15/16			08300-10-31	15.0
8	3.00	3,500	3 1/4	1	08301-10-16			15.0
8	3.00	3,500	3 1/4	1 1/4	08301-10-20			15.0
8	3.00	4,500	3 1/2	3/4		08309-10-12		15.0
8	3.00	4,500	3 1/4	1 1/4	08301-11-20			25.0
8	3.00	4,500	3 1/2	1		08309-11-16		25.0
8	3.00	4,500	3 1/2	1 1/4		08309-11-20		25.0
8	4.00	5,000	4 1/4	2 7/16			08400-10-39	28.0
8	4.00	5,000	4 1/4	1 1/4	08401-10-20			28.0
8	4.00	5,000	4 1/2	1		08409-10-16		28.0
8	4.00	5,000	4 1/2	1 1/4		08409-10-20		28.0
10	3.00	3,500	3 1/4	1 15/16			10300-10-31	30.0
10	3.00	3,500	3 1/4	1	10301-10-16			30.0
10	3.00	3,500	3 1/4	1 1/4	10301-10-20			30.0
10	3.00	3,500	3 1/2	3/4		10309-10-12		30.0
10	3.00	3,500	3 1/2	1		10309-10-16		30.0
10	3.00	4,000	3 1/4	2 7/16			10300-11-39	30.0
10	3.00	4,000	3 1/4	1 1/4	10301-11-20			30.0
10	3.00	4,000	3 1/4	1 1/2	10301-11-24			30.0
10	3.00	4,000	3 1/2	1		10309-11-16		30.0
10	3.00	4,000	3 1/2	1 1/4		10309-11-20		30.0
10	4.00	6,000	4 1/4	2 7/16			10400-10-39	32.0
10	4.00	6,000	4 1/4	1 1/4	10401-10-20			32.0
10	4.00	6,000	4 1/2	1		10409-10-16		32.0
10	4.00	6,000	4 1/2	1 1/4		10409-10-20		32.0
12	2.50	2,500	3 1/4	1	12251-10-16			37.0
12	2.50	2,500	3 1/4	1 1/4	12251-10-20			37.0
12	3.00	3,000	3 1/4	1	12301-10-16			39.0
12	3.00	3,000	3 1/4	1 1/4	12301-10-20			39.0
12	3.00	3,000	3 1/2	3/4		12309-10-12		39.0
12	3.00	3,000	3 1/2	1		12309-10-16		39.0
12	4.00	7,500	4 1/4	1 1/4	12401-12-20*			53.0
12	4.00	7,500	4 1/4	2 7/16			12400-12-39*	53.0
12	4.00	7,500	4 1/4	1 1/2	12401-12-24*			53.0
12	4.00	7,500	4 1/2	1		12409-12-16*		53.0
12	4.00	7,500	4 1/2	1 1/4		12409-12-20*		53.0
12	5.00	10,000	5 1/4	1 1/4	12501-12-20*			98.0
12	5.00	10,000	5 1/4	1 1/2	12501-12-24*			98.0
12	5.00	15,000	5 1/2	1 1/4		12509-12-20*		98.0
12	5.00	15,000	5 1/2	1 1/2		12509-12-24*		98.0
12	6.00	10,000	6 1/2	1 1/4		12609-10-20		75.0
12	6.00	10,000	6 1/2	1 1/2		12609-10-24		75.0
14	4.00	7,000	4 1/4	1 1/4	14401-10-20			60.0
14	4.00	7,000	4 1/4	2 7/16			14400-10-39	60.0
14	4.00	7,000	4 1/2	1		14409-10-16		60.0
14	4.00	7,000	4 1/2	1 1/4		14409-10-20		60.0
16	3.00	3,000	3 1/4	1	16301-10-16			64.0
16	3.00	3,000	3 1/4	1 1/4	16301-10-20			64.0
16	3.00	3,000	3 1/2	1		16309-10-16		64.0
16	4.00	7,500	4 1/4	2 7/16			16400-10-39	72.0
16	4.00	7,500	4 1/4	1 1/4	16401-10-20			72.0
16	4.00	7,500	4 1/4	1 1/2	16401-10-24			72.0
16	4.00	7,500	4 1/2	1		16409-10-16		72.0
16	4.00	7,500	4 1/2	1 1/4		16409-10-20		72.0
16	4.00	7,500	4 1/2	1 1/2		16409-10-24		72.0

Capacity listed is for manual operation. For powered operations, consult factory.

\* These wheels are cast ductile iron

All dimensions are in inches. All weights are in pounds.

CASTER CONCEPTS WILL MODIFY ANY CASTER TO MEET CUSTOMER SPECIFICATIONS

Caster Concepts, Inc., 16000 E. Michigan Ave., Albion, MI 49224 (517) 629-8838 Facsimile (800) 800-0036 www.casterconcepts.com



**FEATURES**

**Bearings:** Roller, tapered, plain, Teflon  
**Temperature:** Maximum to 800 degrees with proper bearings and lubrication.  
**Standard:** All 1-1/2" and 2" wide wheels are supplied with 1/2" spanner standard.

**BENEFITS**

Forged steel wheels are hot forged from high carbon steel billets heated to 2,400 degrees then repeatedly hit by high tonnage forging hammers. This process enhances the grain structure and increases the ductility and tensile strength (64000 psi) of the wheel. The wheels are then precision machined flat with rounded edged to finished tolerances.

Forged steel wheels offer the greatest load capacity, impact strength and rollability of all caster wheels. Wheel material codes: forged steel (20); heavy duty forged steel (21); ductile iron (12)



10409-21-20 shown

WHEEL		CAPACITY			PART NUMBER			
Dia.	Width	Hub Length	Bore	Straight Roller	Precision Tapered	Less Bearing	Wt.	
4	1.50	1,400	2 3/16	1 3/16		04100-20-19	3.25	
4	1.50	1,400	2 3/16	3/4	04101-20-12		3.25	
4	1.50	1,400	2 7/16	1/2		04109-20-08	3.25	
5	1.75	1,500	2 3/16	1 3/16		05200-20-19	5.25	
5	1.75	1,500	2 3/16	3/4	05201-20-12		5.25	
5	1.75	1,500	2 3/16	1 3/16		06200-20-19	5.25	
5	1.75	1,800	2 7/16	1/2		05209-20-08	5.25	
6	2.00	1,500	2 3/16	3/4	06201-20-12		6.25	
6	2.00	2,500	2 7/16	1/2		06209-20-08	6.25	
6	2.50	4,000	3 1/4	1 15/16		06250-20-31	12.00	
6	2.50	4,000	3 1/4	1 1/4	06251-20-20		12.00	
6	2.50	4,000	3 1/4	1	06251-20-16		12.00	
6	2.50	5,000	3 1/2	3/4		06259-20-12	12.00	
6	2.50	5,000	3 1/2	1		06259-20-16	12.00	
6	3.00	6,000	3 1/4	2 7/16		06300-20-39	20.00	
6	3.00	6,000	3 1/4	1 1/4	06301-20-20		20.00	
6	3.00	6,000	3 1/4	1 1/2	06301-20-24		20.00	
6	3.00	10,000	3 1/2	1 1/4		06309-20-20	21.00	
6	3.00	10,000	3 1/2	1		06309-20-16	21.00	
6	3.00	17,000	3 1/4	3 1/8^		06308-21-50	22.00	
6	3.00	17,000	3 1/2	1 1/4		06309-21-20	22.00	
6	3.00	17,000	3 1/2	1 1/2		06309-21-24	22.00	
8	2.50	4,000	3 1/4	1 15/16		08250-20-31	12.00	
8	2.50	4,000	3 1/4	1	08251-20-16		12.00	
8	2.50	4,000	3 1/4	1	08251-20-20		12.00	
8	2.50	5,000	3 1/2	3/4		08259-20-12	12.00	



WHEEL		CAPACITY			PART NUMBER			
Dia.	Width	Hub Length	Bore	Straight Roller	Precision Tapered	Less Bearing	Wt.	
8	3.00	4,500	3 1/4	2		08300-20-31	18.50	
8	3.00	4,500	3 1/4	1	08301-20-16		18.50	
8	3.00	4,500	3 1/4	1 1/4	08301-20-20		18.50	
8	3.00	5,500	3 1/2	3/4		08309-20-12	18.50	
8	3.00	5,500	3 1/2	1		08309-20-16	18.50	
8	4.00	8,400	4 1/4	2 7/16		08400-20-39	37.00	
8	4.00	8,400	4 1/4	1 1/4	08401-20-20		37.00	
8	4.00	8,400	4 1/4	1 1/2	08401-20-24		37.00	
8	4.00	10,000	4 1/2	1		08409-20-16	37.00	
8	4.00	10,000	4 1/2	1 1/4		08409-20-20	37.00	
8	4.00	20,000	4 1/4	3 1/8 <sup>^</sup>		08408-21-50	37.00	
8	4.00	20,000	4 1/2	1 1/4		08409-21-20	37.00	
8	4.00	20,000	4 1/2	1 1/2		08409-21-24	37.00	
10	3.00	5,000	3 1/4	1 15/16		10300-20-31	28.00	
10	3.00	5,000	3 1/4	1	10301-20-16		28.00	
10	3.00	5,000	3 1/4	1 1/4	10301-20-20		28.00	
10	3.00	6,000	3 1/2	3/4		10309-20-12	28.00	
10	3.00	6,000	3 1/2	1		10309-20-16	28.00	
10	3.00	6,000	3 1/4	2 7/16		10300-21-39	28.00	
10	3.00	6,000	3 1/4	1 1/4	10301-21-20		28.00	
10	3.00	6,000	3 1/4	1 1/2	10301-21-24		28.00	
10	3.00	6,500	3 1/2	1		10309-21-16	28.00	
10	3.00	6,500	3 1/2	1 1/4		10309-21-20	28.00	
10	4.00	8,400	4 1/4	2 7/16		10400-20-39	48.00	
10	4.00	8,400	4 1/4	1 1/4	10401-20-20		48.00	
10	4.00	8,400	4 1/4	1 1/2	10401-20-24		48.00	
10	4.00	10,000	4 1/2	1		10409-20-16	48.00	
10	4.00	10,000	4 1/2	1 1/4		10409-20-20	48.00	
10	4.00	20,000	4 1/4	3 1/8 <sup>^</sup>		10408-21-50	48.00	
10	4.00	20,000	4 1/2	1 1/4		10409-21-20	48.00	
10	4.00	20,000	4 1/2	1 1/2		10409-21-24	48.00	
12	4.00	7,500	4 1/4	2 7/16		12400-12-39*	53.00	
12	4.00	7,500	4 1/4	1 1/4	12401-12-20*		53.00	
12	4.00	7,500	4 1/4	1 1/2	12401-12-24*		53.00	
12	4.00	7,500	4 1/2	1		12409-12-16*	53.00	
12	4.00	7,500	4 1/2	1 1/4		12409-12-20*	53.00	
12	5.00	10,000	5 1/4	1 1/4	12501-12-20*		98.00	
12	5.00	10,000	5 1/4	1 1/2	12401-12-24*		98.00	
12	5.00	10,000	5 1/2	1 1/4		12509-12-20*	98.00	
12	5.00	10,000	5 1/2	1 1/2		12509-12-24*	98.00	

<sup>^</sup> Dimensions for tapered bearing bore.  
 \* These wheels are cast ductile iron  
 All dimensions are in inches. All weights are in pounds.



FEATURES

**Bearings:** Precision ball, Delrin, straight roller and tapered
**Standard:** All 1-1/2" and 2" wide wheels with 3/4" roller bearings are supplied with 1/2" spanner standard.

BENEFITS

A wide selection of phenolic resin wheels are available in inventory. The wheels shown in the chart are laminated phenolic.

Laminated phenolic wheels (35) feature a continuous wound tread with a macerated canvas center. The wheels have a 40% higher impact resistance and carry up to 25% higher load than standard phenolic wheels. The continuous wrap process makes this wheel a longer wearing product that has a higher resistance to chipping and fraying.

High temperature phenolic wheels (32) provide continuous service up to 425° F and intermittently to 500° F.

Standard black phenolic wheels (30) feature macerated canvas duck compression molded with premium phenolic resins to produce a value/price relationship.



06201-30-12

APPLICATIONS

Phenolic wheels are excellent for waste bins, platform trucks, heavy material handling, autoclaves, baking ovens, curing ovens and high temperature bakery applications.

Table with columns: WHEEL CAPACITY, PART NUMBER, Dia., Width, Hub Length, Bore, Straight Roller, Precision Tapered, Ball Bearing, Wt.

All dimensions are in inches. All weights are in pounds.

PHENOLIC WHEELS ARE AVAILABLE IN DIAMETERS FROM 3" TO 18" AND CAPACITIES TO 8,000 LBS. PLEASE CONSULT THE FACTORY.



Caster Concepts has gained a reputation in the industry for application-oriented solutions to tough material handling and mobility problems. Establishing a market for custom and special casters and wheels has driven the need for developing expertise in engineering application solutions with a variety of premium urethane elastomers.

Caster Concepts, in partnership with leading producers of polyurethane prepolymers, is continually working to develop products for a wide range of customer specific needs. While there are standard “go to” products that work in a variety of applications, Caster Concepts is expanding its market reach by applying its application knowledge to solve tough performance applications in a variety of industries. Success in this area includes:

### T/R COMPOUND URETHANE WHEELS

This material produces a softer durometer wheel that resists the accumulation of metal chips, sheet metal screws, and foreign objects often found in manufacturing facilities. The high rebound of this material provides increased rollability in ergonomic in-plant applications, and has become a favorite in production line delivery systems across the country.

### STANDARD POLYURETHANE

Caster Concepts' standard durometer 95A polyurethane is easily identified by its Maroon color. This material is economical, provides, lower rolling resistance than rubber wheels and are floor protective.

### HIGH SPEED WHEELS

Caster Concepts has worked to develop a line of wheels that will withstand the rigors of higher loads and speeds found in today's lift truck industries. These wheels are able to dissipate the heat being generated through the load, the speed, or a combination of both.

### ELASTOMERS

Processed in-house, elastomers provide flexibility in material choice, hardness, and finished size. Caster Concepts is adept at processing MDI polyesters, and TDI polyether and polyesters, in a wide range of durometers from 50 durometer shore A to 70 durometer shore D scale.



T/R Compound Ergonomic wheels, excellent for manual pushed loads up to 1,500 pounds per dolly.



95A durometer high load capacity economic floor protective wheel.



70D Durometer for heavy loads, floor protection and ease of movement.



High speed urethane offers performance under severe applications.

**Consult factory for your toughest applications.**



## FEATURES

---

### BEARINGS

#### SEALED PRECISION BALL

Precision ball bearings offer the lowest rolling resistance for ergonomic applications. These bearings are often referred to as “sealed for life” due to their being rubber seals on both sides. These bearings are capable of applications where towing up to 5 mph is present, please consult the factory.

#### ROLLER BEARING

These commercial bearings are used when a low cost anti-friction bearing is required, they provide excellent load carrying capacity, at an economical cost.

#### PRECISION TAPERED

Tapered bearings are used in applications where towing and capacity are present. Tapered bearings do to their nature are adjusted tight at the factory to provide a preload thrust component to the wheel. Tapered bearings are not recommended for applications where there is a high amount of manual movement required.

#### DELRIN

Delrin bearings are a friction type bearing used in wet applications where light loads and infrequent movement is present.

#### OILITE

Oilite bearings offer a low cost friction bearing where heat, moisture, infrequent movement or lighter loads are part of the application.



---

### TESTING

In-house test dynamometers, with sophisticated metering equipment, allow Caster Concepts to develop test parameters for product duty – life cycle profile testing and performance evaluations prior to delivery to the field.

---

### METRIC WHEELS

The capability to control the production of wheels through design, production, product testing and final shipment, has driven Caster Concepts to design and develop a full line of metric wheels for replacement on equipment produced in Europe and Asia.

Metric wheel diameters available include:

50 mm	180 mm	230 mm
80 mm	200 mm	250 mm
125 mm	220 mm	300 mm









**CASTER CONCEPTS**







# ERGONOMIC POLY WHEELS

**3,600** maximum capacity  
LBS

**PRECISION BALL BEARINGS**

WHEEL				PART NO.	CAPACITY	PART NO.	CAPACITY	PART NO.	CAPACITY		
											
Dia.	Width	Hub Length	Bore	Ball Bearing	T/R Soft	Capacity	Std. Poly	Capacity	Hard Poly	Capacity	Wt.
4	2.00	2 7/16	1/2	Precision	04202-66-08	600	04202-65-08	750			3.0
5	2.00	2 7/16	1/2	Precision	05202-61-08	840	05202-60-08	1,050			3.0
6	2.00	2 7/16	1/2	Precision	06202-61-08	960	06202-60-08	1,200	06202-63-08	1,440	4.5
6	3.00	3 1/2	3/4	Precision	06302-61-12	1,640	06302-60-12	2,050	06302-63-12	2,460	9.5
8	2.00	2 7/16	1/2	Precision	08202-61-08	1,240	08202-60-08	1,550	08202-63-08	1,860	8.0
8	2.50	3 1/2	3/4	Precision	08252-61-12	1,640	08252-60-12	2,050			9.5
8	3.00	3 1/2	3/4	Precision	08302-61-12	2,000	08302-60-12	2,500	08302-63-12	3,000	12.5
8	3.00	3 1/2	1	Precision	08302-61-16	2,000	08302-60-16	2,500	08302-63-16	3,000	12.5
10	3.00	3 1/2	3/4	Precision	10302-61-12	2,400	10302-60-12	3,000	10302-63-12	3,600	16.0
10	3.00	3 1/2	1	Precision	10302-61-16	2,400	10302-60-16	3,000	10302-63-16	3,600	16.0
12	3.00	3 1/2	3/4	Precision	12302-61-12	2,800	12302-60-12	3,500			21.0
12	3.00	3 1/2	1	Precision	12302-61-16	2,800	12302-60-16	3,500			21.0
12	3.00	3 1/2	1 1/4	Precision	12302-61-20	2,800	12302-60-20	3,500			21.0

## ROUND TREAD ERGO WHEELS

WHEEL						PART NO.	CAPACITY				
											
Dia.	Width	Hub Length	Bore	Bearing	T/R Soft	Capacity	Std. Poly	Capacity	Hard Poly	Capacity	Wt.
6	2.00	2 7/16	1/2	Precision	06202-51-08	800	06202-50-08	1,000	06202-53-08	1,200	4.0
8	2.00	2 7/16	1/2	Precision	08202-51-08	1,000	08202-50-08	1,240	08202-53-08	1,500	5.5
10	2.00	3 1/2	3/4	Precision	10202-61-08	1,250	10202-60-12	1,500			12.0
12	1.75	3 1/2	3/4	Precision	12172-61-08	1,500	12172-60-08	1,700			18.0



**CASTER CONCEPTS WILL MODIFY ANY CASTER TO MEET CUSTOMER SPECIFICATIONS**  
Caster Concepts, Inc., 16000 E. Michigan Ave., Albion, MI 49224 (517) 629-8838 Facsimile (800) 800-0036 www.casterconcepts.com

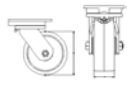


**CASTER CONCEPTS**

# STANDARD PROFILE POLY WHEELS

**5,040** maximum capacity  
LBS

WHEEL				PART NO.	CAPACITY	PART NO.	CAPACITY	PART NO.	CAPACITY
-------	--	--	--	----------	----------	----------	----------	----------	----------



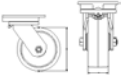




Dia.	Width	Hub Length	Bore	Bearing	T/R Soft	Std Poly	Hard Poly	Wt.
4	2.00	2 3/16	1 3/16		04200-61-19	600	04200-60-19	3.0
4	2.00	2 3/16	3/4	Roller	04201-61-12	600	04201-60-12	3.0
4	2.00	2 7/16	1/2	Tapered	04209-61-08	600	04209-60-08	3.0
4	3.25	3 1/4	1 15/16		04320-61-31	1,020	04320-60-31	5.0
4	3.25	3 1/4	1	Roller	04321-61-16	1,020	04321-60-16	5.0
4	3.25	3 1/4	1 1/4	Roller	04321-61-20	1,020	04321-60-20	5.0
4	3.25	3 1/2	3/4	Tapered	04329-61-12	1,020	04329-60-12	5.0
4	3.25	3 1/2	1	Tapered	04329-61-16	1,020	04329-60-16	5.0
4	4.00	4 1/4	2 7/16		04400-61-39	1,280	04400-60-39	10.0
4	4.00	4 1/4	1 1/4	Roller	04401-61-20	1,280	04401-60-20	10.0
4	4.00	4 1/4	1 1/2	Roller	04401-61-24	1,280	04401-60-24	10.0
4	4.00	4 1/2	1	Tapered	04409-61-16	1,280	04409-60-16	10.0
4	4.00	4 1/2	1 1/4	Tapered	04409-61-20	1,280	04409-60-20	10.0
5	2.00	2 3/16	1 3/16		05200-61-19	840	05200-60-19	3.0
5	2.00	2 3/16	3/4	Roller	05201-61-12	840	05201-60-12	3.0
5	2.00	2 7/16	1/2	Tapered	05209-61-08	840	05209-60-08	3.0
5	2.50	3 1/4	1 15/16		05250-61-31	1,060	05250-60-31	7.0
5	2.50	3 1/4	1	Roller	05251-61-16	1,060	05251-60-16	7.0
5	2.50	3 1/4	1 1/4	Roller	05251-61-20	1,060	05251-60-20	7.0
5	2.50	3 1/2	3/4	Tapered	05259-61-12	1,060	05259-60-12	7.0
5	2.50	3 1/2	1	Tapered	05259-61-16	1,060	05259-60-16	7.0
5	3.00	3 1/4	1 15/16		05300-61-31	1,225	05300-60-31	9.0
5	3.00	3 1/4	1	Roller	05301-61-16	1,225	05301-60-16	9.0
5	3.00	3 1/4	1 1/4	Roller	05301-61-20	1,225	05301-60-20	9.0
5	3.00	3 1/4	3/4	Tapered	05309-61-12	1,225	05309-60-12	9.0
5	3.00	3 1/4	1	Tapered	05309-61-16	1,225	05309-60-16	9.0
6	2.00	2 3/16	1 3/16		06200-61-19	960	06200-60-19	4.5
6	2.00	2 3/16	3/4	Roller	06201-61-12	960	06201-60-12	4.5
6	2.00	2 7/16	1/2	Tapered	06209-61-08	960	06209-60-08	4.5
6	2.00	2 7/16	3/4	Tapered	06209-61-12	960	06209-60-12	4.5
6	2.50	3 1/4	1 15/16		06250-61-31	1,300	06250-60-31	6.5
6	2.50	3 1/4	1	Roller	06251-61-16	1,300	06251-60-16	6.5
6	2.50	3 1/4	1 1/4	Roller	06251-61-20	1,300	06251-60-20	6.5
6	2.50	3 1/2	3/4	Tapered	06259-61-12	1,300	06259-60-12	6.5
6	2.50	3 1/2	1	Tapered	06259-61-16	1,300	06259-60-16	6.5
6	3.00	3 1/4	1 15/16		06300-61-31	1,640	06300-60-31	9.5
6	3.00	3 1/4	1	Roller	06301-61-16	1,640	06301-60-16	9.5
6	3.00	3 1/4	1 1/4	Roller	06301-61-20	1,640	06301-60-20	9.5
6	3.00	3 1/2	3/4	Tapered	06309-61-12	1,640	06309-60-12	9.5
6	3.00	3 1/2	1	Tapered	06309-61-16	1,640	06309-60-16	9.5
6	3.00	3 1/2	1 1/4	Tapered	06309-61-20	1,640	06309-60-20	9.5



**CASTER CONCEPTS**

# STANDARD PROFILE POLY WHEELS

**5,040** maximum capacity  
LBS

WHEEL		PART NO.	CAPACITY	PART NO.	CAPACITY	PART NO.	CAPACITY				
											
Dia.	Width	Hub Length	Bore	Bearing	T/R Soft	Std Poly	Hard Poly	Wt.			
8	2.00	2 3/16	1 3/16		08200-61-19	1,240	08200-60-19	1,550	08200-63-19	1,860	8.0
8	2.00	2 3/16	3/4	Roller	08201-61-12	1,240	08201-60-12	1,550	08201-63-12	1,860	8.0
8	2.00	2 7/16	3/4	Tapered	08209-61-12	1,240	08209-60-12	1,550	08209-63-12	1,860	8.0
8	2.50	3 1/4	1 15/16		08250-61-31	1,640	08250-60-31	2,050	08250-63-31	2,460	9.5
8	2.50	3 1/4	1	Roller	08251-61-16	1,640	08251-60-16	2,050	08251-63-16	2,460	9.5
8	2.50	3 1/4	1 1/4	Roller	08251-61-20	1,640	08251-60-20	2,050	08251-63-20	2,460	9.5
8	2.50	3 1/2	3/4	Tapered	08259-61-12	1,640	08259-60-12	2,050	08259-63-12	2,460	9.5
8	2.50	3 1/2	1	Tapered	08259-61-16	1,640	08259-60-16	2,050	08259-63-16	2,460	9.5
8	3.00	3 1/4	1 15/16		08300-61-31	2,000	08300-60-31	2,500	08300-63-31	3,000	12.5
8	3.00	3 1/4	1	Roller	08301-61-16	2,000	08301-60-16	2,500	08301-63-16	3,000	12.5
8	3.00	3 1/4	1 1/4	Roller	08301-61-20	2,000	08301-60-20	2,500	08301-63-20	3,000	12.5
8	3.00	3 1/2	3/4	Tapered	08309-61-12	2,000	08309-60-12	2,500	08309-63-12	3,000	12.5
8	3.00	3 1/2	1	Tapered	08309-61-16	2,000	08309-60-16	2,500	08309-63-16	3,000	12.5
8	3.00	3 1/2	1 1/4	Tapered	08309-61-20	2,000	08309-60-20	2,500	08309-63-20	3,000	12.5
8	4.00	4 1/4	2 7/16		08400-61-39	3,040	08400-60-39	3,800	08400-63-39	4,560	20.0
8	4.00	4 1/4	1 1/4	Roller	08401-61-20	3,040	08401-60-20	3,800	08401-63-20	4,560	20.0
8	4.00	4 1/4	1 1/2	Roller	08401-61-24	3,040	08401-60-24	3,800	08401-63-24	4,560	20.0
8	4.00	4 1/2	1	Tapered	08409-61-16	3,040	08409-60-16	3,800	08409-63-16	4,560	20.0
8	4.00	4 1/2	1 1/4	Tapered	08409-61-20	3,040	08409-60-20	3,800	08409-63-20	4,560	20.0
10	3.00	3 1/4	1 15/16		10300-61-31	2,400	10300-60-31	3,000	10300-63-31	3,600	16.0
10	3.00	3 1/4	1	Roller	10301-61-16	2,400	10301-60-16	3,000	10301-63-16	3,600	16.0
10	3.00	3 1/4	1 1/4	Roller	10301-61-20	2,400	10301-60-20	3,000	10301-63-20	3,600	16.0
10	3.00	3 1/2	3/4	Tapered	10309-61-12	2,400	10309-60-12	3,000	10309-63-12	3,600	16.0
10	3.00	3 1/2	1	Tapered	10309-61-16	2,400	10309-60-16	3,000	10309-63-16	3,600	16.0
10	3.00	3 1/2	1 1/4	Tapered	10309-61-20	2,400	10309-60-20	3,000	10309-63-20	3,600	16.0
10	4.00	4 1/4	2 7/16		10400-61-39	3,360	10400-60-39	4,200	10400-63-39	5,040	23.0
10	4.00	4 1/4	1 1/4	Roller	10401-61-20	3,360	10401-60-20	4,200	10401-63-20	5,040	23.0
10	4.00	4 1/4	1 1/2	Roller	10401-61-24	3,360	10401-60-24	4,200	10401-63-24	5,040	23.0
10	4.00	4 1/2	1	Tapered	10409-61-16	3,360	10409-60-16	4,200	10409-63-16	5,040	23.0
10	4.00	4 1/2	1 1/4	Tapered	10409-61-20	3,360	10409-60-20	4,200	10409-63-20	5,040	23.0
12	3.00	3 1/4	1 15/16		12300-61-31	2,800	12300-60-31	3,500	12300-63-31	4,200	21.0
12	3.00	3 1/4	1	Roller	12301-61-16	2,800	12301-60-16	3,500	12301-63-16	4,200	21.0
12	3.00	3 1/4	1 1/4	Roller	12301-61-20	2,800	12301-60-20	3,500	12301-63-20	4,200	21.0
12	3.00	3 1/2	3/4	Tapered	12309-61-12	2,800	12309-60-12	3,500	12309-63-12	4,200	21.0
12	3.00	3 1/2	1	Tapered	12309-61-16	2,800	12309-60-16	3,500	12309-63-16	4,200	21.0
12	3.00	3 1/2	1 1/4	Tapered	12309-61-20	2,800	12309-60-20	3,500	12309-63-20	4,200	21.0



Conveyor transmission drive wheel

CASTER CONCEPTS WILL MODIFY ANY CASTER TO MEET CUSTOMER SPECIFICATIONS  
Caster Concepts, Inc., 16000 E. Michigan Ave., Albion, MI 49224 (517) 629-8838 Facsimile (800) 800-0036 www.casterconcepts.com

STANDARD PROFILE POLYURETHANE WHEELS 5,040 lbs maximum capacity



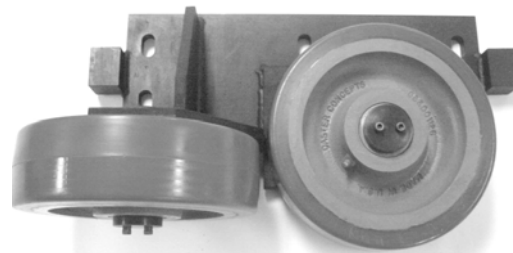
WHEEL				PART NO.	CAPACITY	PART NO.	CAPACITY	PART NO.	CAPACITY
Dia.	Width	Hub Length	Bore	Bearing	T/R Soft	Std Poly	Hard Poly	Wt.	

## HIGH PROFILE POLY WHEELS—THICK TREAD

4	2.00	2	7/16		Precision	04202-66-08	600					
6	3.00	3 1/4	1	1 15/16		06300-66-31	2,050	06300-65-31	2,450	06300-67-31	2,950	9.5
6	3.00	3 1/4	1	1	Roller	06301-66-16	2,050	06301-65-16	2,450	06301-67-16	2,950	9.5
6	3.00	3 1/4	1	1 1/4	Roller	06301-66-20	2,050	06301-65-20	2,450	06301-67-20	2,950	9.5
6	3.00	3 1/2	3/4	3/4	Tapered	06309-66-12	2,050	06309-65-12	2,450	06309-67-12	2,950	9.5
6	3.00	3 1/2	1	1	Tapered	06309-66-16	2,050	06309-65-16	2,450	06309-67-16	2,950	9.5
6	4.00	4 1/4	2	7/16		06400-66-39	2,400	06400-65-39	3,000	06400-67-39	3,600	17.0
6	4.00	4 1/4	1	1 1/4	Roller	06401-66-20	2,400	06401-65-20	3,000	06401-67-20	3,600	17.0
6	4.00	4 1/4	1	1 1/2	Roller	06401-66-24	2,400	06401-65-24	3,000	06401-67-24	3,600	17.0
6	4.00	4 1/2	1	1	Tapered	06409-66-16	2,400	06409-65-16	3,000	06409-67-16	3,600	17.0
6	4.00	4 1/2	1	1 1/4	Tapered	06409-66-20	2,400	06409-65-20	3,000	06409-67-20	3,600	17.0
6	5.00	5 1/4	2	7/16		06500-66-39	2,960	06500-65-39	3,700	06500-67-39	4,400	20.0
6	5.00	5 1/4	1	1 1/4	Roller	06501-66-20	2,960	06501-65-20	3,700	06501-67-20	4,400	20.0
6	5.00	5 1/4	1	1 1/2	Roller	06501-66-24	2,960	06501-65-24	3,700	06501-67-24	4,400	20.0
6	5.00	5 1/2	1	1	Tapered	06509-66-16	2,960	06509-65-16	3,700	06509-67-16	4,400	20.0
6	5.00	5 1/2	1	1 1/4	Tapered	06509-66-20	2,960	06509-65-20	3,700	06509-67-20	4,400	20.0
8	3.00	3 1/4	1	1 15/16		08300-66-31	2,480	08300-65-31	3,100	08300-67-31	3,500	17.0
8	3.00	3 1/4	1	1	Roller	08301-66-16	2,480	08301-65-16	3,100	08301-67-16	3,500	17.0
8	3.00	3 1/4	1	1 1/4	Roller	08301-66-20	2,480	08301-65-20	3,100	08301-67-20	3,500	17.0
8	3.00	3 1/2	3/4	3/4	Tapered	08309-66-12	2,480	08309-65-12	3,100	08309-67-12	3,500	17.0
8	3.00	3 1/2	1	1	Tapered	08309-66-16	2,480	08309-65-16	3,100	08309-67-16	3,500	17.0
10	3.00	3 1/4	2	7/16		10300-69-39	2,960	10300-68-39	3,700	10300-67-39	4,440	24.0
10	3.00	3 1/4	1	1 15/16		10300-66-31	2,960	10300-65-31	3,700	10300-67-31	4,440	24.0
10	3.00	3 1/4	1	1	Roller	10301-66-16	2,960	10301-65-16	3,700	10301-67-16	4,440	24.0
10	3.00	3 1/4	1	1 1/4	Roller	10301-66-20	2,960	10301-65-20	3,700	10301-67-20	4,440	24.0
10	3.00	3 1/4	1	1 1/2	Roller	10301-69-24	2,960	10301-68-24	3,700	10301-67-24	4,440	24.0
10	3.00	3 1/2	3/4	3/4	Tapered	10309-66-12	2,960	10309-65-12	3,700	10309-67-12	4,440	24.0
10	3.00	3 1/2	1	1	Tapered	10309-66-16	2,960	10309-65-16	3,700	10309-67-16	4,440	24.0
10	3.00	3 1/2	1	1 1/4	Tapered	10309-69-20	2,960	10309-68-20	3,700	10309-67-20	4,440	24.0
10	4.00	4 1/4	2	7/16		10400-66-39	4,000	10400-65-39	5,000	10400-67-39	6,000	33.0
10	4.00	4 1/4	1	1 1/4	Roller	10401-66-20	4,000	10401-65-20	5,000	10401-67-20	6,000	33.0
10	4.00	4 1/4	1	1 1/2	Roller	10401-66-24	4,000	10401-65-24	5,000	10401-67-24	6,000	33.0
10	4.00	4 1/2	1	1	Tapered	10409-66-16	4,000	10409-65-16	5,000	10409-67-16	6,000	33.0
10	4.00	4 1/2	1	1 1/4	Tapered	10409-66-20	4,000	10409-65-20	5,000	10409-67-20	6,000	33.0
10	5.00	5 1/4	2	7/16		10500-66-39	4,800	10500-65-39	6,000	10500-67-39	7,200	45.0
10	5.00	5 1/4	1	1 1/4	Roller	10501-66-20	4,800	10501-65-20	6,000	10501-67-20	7,200	45.0



T/R Compound used as Skillet Drive wheels



Value Added: Complete Vertical Drop Lift Elevator guide wheel assembly



WHEEL		PART NO.	CAPACITY	PART NO.	CAPACITY	PART NO.	CAPACITY				
Dia.	Width	Hub Length	Bore	Bearing	T/R Soft	Std Poly	Hard Poly	Wt.			
<b>HIGH PROFILE CONTINUED</b>											
12	3.00	3 1/4	2 7/16		12300-66-39	3,080	12300-65-39	3,850	12300-67-39	4,620	24.0
12	3.00	3 1/4	1 1/4	Roller	12301-66-20	3,080	12301-65-20	3,850	12301-67-20	4,620	24.0
12	3.00	3 1/4	1 1/2	Roller	12301-66-24	3,080	12301-65-24	3,850	12301-67-24	4,620	24.0
12	3.00	3 1/2	1	Tapered	12309-66-16	3,080	12309-65-16	3,850	12309-67-16	4,620	24.0
12	3.00	3 1/2	1 1/4	Tapered	12309-66-20	3,080	12309-65-20	3,850	12309-67-20	4,620	24.0
12	4.00	4 1/4	2 7/16		12400-66-39	4,400	12400-65-39	5,500	12400-67-39	6,600	30.0
12	4.00	4 1/4	1 1/4	Roller	12401-66-20	4,400	12401-65-20	5,500	12401-67-20	6,600	30.0
12	4.00	4 1/4	1 1/2	Roller	12401-66-24	4,400	12401-65-24	5,500	12401-67-24	6,600	30.0
12	4.00	4 1/2	1	Tapered	12409-66-16	4,400	12409-65-16	5,500	12409-67-16	6,600	30.0
12	4.00	4 1/2	1 1/4	Tapered	12409-66-20	4,400	12409-65-20	5,500	12409-67-20	6,600	30.0
12	5.00	5 1/4	2 7/16		12500-66-39	5,200	12500-65-39	6,500	12500-67-39	7,800	45.0
12	5.00	5 1/4	1 1/4	Roller	12501-66-20	5,200	12501-65-20	6,500	12501-67-20	7,800	45.0
12	5.00	5 1/4	1 1/2	Roller	12501-66-24	5,200	12501-65-24	6,500	12501-67-24	7,800	45.0
12	5.00	5 1/2	1	Tapered	12509-66-16	5,200	12509-65-16	6,500	12509-67-16	7,800	45.0
12	5.00	5 1/2	1 1/4	Tapered	12509-66-20	5,200	12509-65-20	6,500	12509-67-20	7,800	45.0
16	4.00	4 1/4	2 7/16				16400-65-39	6,000	16400-67-39	8,000	40.0
16	4.00	4 1/4	1 1/4	Roller			16401-65-20	6,000	16401-67-20	8,000	40.0
16	4.00	4 1/4	1 1/2	Roller			16401-65-24	6,000	16401-67-24	8,000	40.0
16	4.00	4 1/2	1	Tapered			16409-65-16	6,000	16409-67-16	8,000	40.0
16	4.00	4 1/2	1 1/4	Tapered			16409-65-20	6,000	16409-67-20	8,000	40.0
16	5.00	5 1/4	2 7/16				16500-65-39	8,000	16500-67-39	9,000	72.0
16	5.00	5 1/4	1 1/4	Roller			16501-65-20	8,000	16501-67-20	9,000	72.0
16	5.00	5 1/4	1 1/2	Roller			16501-65-24	8,000	16501-67-24	9,000	72.0
16	5.00	5 1/2	1	Tapered			16509-65-16	8,000	16509-67-16	9,000	72.0
16	5.00	5 1/2	1 1/4	Tapered			16509-65-20	8,000	16509-67-20	9,000	72.0
18	5.00	5 1/4	2 7/16				18500-65-29	8,500	18500-67-39	9,000	90.0
18	5.00	5 1/4	1 1/4	Roller			18501-65-20	8,500	18501-67-20	9,000	90.0
18	5.00	5 1/4	1 1/2	Roller			18501-65-24	8,500	18501-67-24	9,000	90.0
18	5.00	5 1/2	1	Tapered			18509-65-16	8,500	18509-67-16	9,000	90.0
18	5.00	5 1/2	1 1/4	Tapered			18509-65-20	8,500	18509-67-20	9,000	90.0
20	5.00	5 1/4	2 7/16				20500-65-39	9,000	20500-67-39	10,500	110.0
20	5.00	5 1/4	1 1/4	Roller			20500-65-20	9,000	20500-67-20	10,500	110.0
20	5.00	5 1/4	1 1/2	Roller			20501-65-24	9,000	20501-67-24	10,500	110.0
20	5.00	5 1/4	2	Roller			20501-65-32	9,000	20501-67-32	10,500	110.0
20	5.00	5 1/2	1	Tapered			20509-65-16	9,000	20509-67-16	10,500	110.0
20	5.00	5 1/2	1 1/4	Tapered			20509-65-20	9,000	20509-67-20	10,500	110.0
20	5.00	5 1/2	1 1/2	Tapered			20509-65-24	9,000	20509-67-24	10,500	110.0
20	5.00	5 1/2	2	Tapered			20509-65-32	9,000	20509-67-32	10,500	110.0

All dimensions are in inches. All weights are in pounds.



**Caster Concepts continues to expand and develop a wide range of industrial application solutions using engineered plastics. Some of these applications include:**

**Vertical Drop Lift Guide and Roller Assemblies**

**Conveyor Accumulation Rollers**

**Turn Table Support and Load Wheels**

**High Load Capacity Caster Wheels**

Caster Concepts chooses materials, which are suited to the customer's specific application, where duty cycle, environment and loads are fully understood. Engineered plastics offer lower coefficient of friction and good abrasion resistance, and excellent structural rigidity in a wide variety of applications where cast iron or steel were previously used.

Many of the compositions are filled with lubricating materials which allow applications in situations where maintenance is an issue. Materials can be dynamically tested in the Caster Concepts Engineering Test facility to duplicate duty cycle and loads prior to installation in the field.

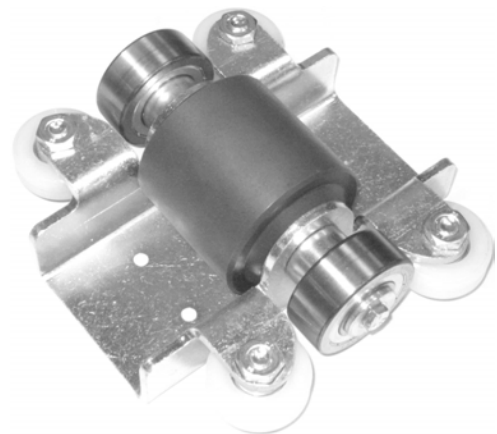
Caster Concepts' NYTEC- MD materials are widely used as idlers and support wheels in many large turn table applications. They provide a high load capacity while also offering a material that will provide reduced noise when compared to steel.

The Caster Concepts NYTEC- HS is a heat stabilized material which is suited for higher loads, with thermal stability up to 260 degrees. This material is excellent in applications where continual use is necessary. Wheels manufactured in NYTEC- HS material have been tested under load to 2 million revolutions and have shown little or no wear to the tread surface.

Engineered Plastic Wheels and Rollers offer you additional solution opportunities for your specific application needs. Contact Caster Concepts for assistance in designing a rolling solution for you.



Floor-to-floor elevator guide wheel of NYTEC-HS



Automotive Assembly line roller flight accumulation conveyor roller



Belt Conveyor take up assembly with belt guard



**FEATURES**

NyTec-MD is a nylon filled material which provides a high load capacity, floor protective wheel. Wheel capacities approach those of similar cast iron and steel wheels. Nytec- MD material is resistant to most harsh environments. The non-abrasive and vibration dampening material actually provides a quieter operation when compared to steel or cast iron wheels. When used in wet environments, plain bore NyTec-MD wheels can be used as the material is self lubricating. NyTec wheels are offered with precision tapered, precision ball, and straight roller bearings. For special applications, contact the factory.

WHEEL				PART NUMBER			CAPACITY
Dia.	Width	Hub Length	Bore	Roller	Ball Bearing	Tapered	Capacity
3	2.19	2 7/16	1/2	03201-39-12	03202-39-08	03209-39-08	780
3	3.25	3 1/2	1	03301-39-16*		03309-39-16	1,170
3	3.25	3 1/4	1 1/4	03301-39-20			1,170
3	4.25	4 1/2	3/4		03402-39-12	03409-39-12	1,560
3	4.25	4 1/2	1 1/2	03401-39-24*		03409-39-16	1,560
3	4.25	4 1/4	1 1/4	03401-39-20*			1,560
4	2.19	2 7/16	1/2	04201-39-12	04202-39-08	04209-39-08	1,040
4	3.25	3 1/2	3/4		04302-39-12	04309-39-12	1,560
4	3.25	3 1/2	1	04301-39-16*		04309-39-16	1,560
4	3.25	3 1/2	1 1/4	04301-39-20*		04309-39-20	1,560
4	4.25	4 1/2	3/4		04402-39-12	04409-39-12	2,080
4	4.25	4 1/2	1		04402-39-16	04409-39-16	2,080
4	4.25	4 1/2	1 1/4	04401-39-20*	04402-39-20	04409-39-20	2,080
4	4.25	4 1/4	1 1/2	04401-39-24			2,080
6	2.19	2 7/16	1/2	06201-39-12	06202-39-08	06209-39-08	1,560
6	3.25	3 1/2	3/4		06302-39-12	06309-39-12	2,340
6	3.25	3 1/2	1	06301-39-16*	06302-39-16	06309-39-16	2,340
6	3.25	3 1/2	1 1/4	06301-39-20*	06302-39-20	06309-39-20	2,340
6	4.25	4 1/2	1		06402-39-16	06409-39-16	3,120
6	4.25	4 1/2	1 1/4	06401-39-20*	06402-39-20	06409-39-20	3,120
6	4.25	4 1/4	1 1/2	06401-39-24			3,120
6	5.25	5 1/2	1		06502-39-16	06509-39-16	3,900
6	5.25	5 1/2	1 1/4	06501-39-20*	06502-39-20	06509-39-20	3,120
6	5.25	5 1/4	1 1/2	06501-39-24			3,120
8	2.19	2 7/16	1/2	08201-39-12	08202-39-08	08209-39-08	2,080
8	3.25	3 1/2	3/4		08302-39-12	08309-39-12	3,120
8	3.25	3 1/2	1	08301-39-16*	08302-39-16	08309-39-16	3,120
8	3.25	3 1/2	1 1/4	08301-39-20*	08302-39-20	08309-39-20	3,120
8	4.25	4 1/2	1		08402-39-16	08409-39-16	4,160
8	4.25	4 1/2	1 1/4	08401-39-20*	08402-39-20	08409-39-20	4,160
8	4.25	4 1/4	1 1/2	08401-39-24			4,160
8	5.25	5 1/2	1		08502-39-16	08509-39-16	4,160
8	5.25	5 1/2	1 1/4	08501-39-20*	08502-39-20	08509-39-20	5,200
8	5.25	5 1/4	1 1/2	08501-39-24			5,200
10	3.25	3 1/2	3/4		10302-39-12	10309-39-12	3,900
10	3.25	3 1/2	1	10301-39-16*	10302-39-16	10309-39-16	3,900
10	3.25	3 1/2	1 1/4	10301-39-20*	10302-39-20	10309-39-20	3,900
10	4.25	4 1/2	1		10402-39-16	10409-39-16	5,200
10	4.25	4 1/2	1 1/4	10401-39-20*	10402-39-20	10409-39-20	5,200
10	4.25	4 1/4	1 1/2	10401-39-24			5,200
10	5.25	5 1/2	1		10502-39-16	10509-39-16	6,500
10	5.25	5 1/2	1 1/4	10501-39-20*	10502-39-20	10509-39-20	6,500
10	5.25	5 1/4	1 1/2	10501-39-24			6,500
12	3.25	3 1/2	3/4		12302-39-12	12309-39-12	4,680
12	3.25	3 1/2	1	12301-39-16*	12302-39-16	12309-39-16	4,680
12	3.25	3 1/2	1 1/4	12301-39-20*	12302-39-20	12309-39-20	4,680
12	4.25	3 1/2	1		12402-39-16	12409-39-16	6,240
12	4.25	3 1/2	1 1/4	12401-39-20*	12402-39-20	12409-39-20	6,240
12	4.25	3 1/4	1 1/2	12401-39-24			6,240
12	5.25	5 1/2	1		12502-39-16	12509-39-16	7,800
12	5.25	5 1/2	1 1/4	12501-39-20*	12502-39-20	12509-39-20	7,800
12	5.25	5 1/4	1 1/2	12501-39-24			7,800
12	6.25	6 1/2	1		12602-39-16	12509-39-16	9,360
12	6.25	6 1/2	1 1/4		12602-39-20	12609-39-20	9,360

\* These wheels have .25 shorter hub length

**CASTER CONCEPTS WILL MODIFY ANY CASTER TO MEET CUSTOMER SPECIFICATIONS**  
Caster Concepts, Inc., 16000 E. Michigan Ave., Albion, MI 49224 (517) 629-8838 Facsimile (800) 800-0036 www.casterconcepts.com



**FEATURES**

**Bearings:** Delrin, oilite, roller, precision ball, tapered.  
**Temperature:** Maximum to 180° F  
**Durometer:** 70 Durometer Shore A  
**Standard:** All 1-1/2" and 2" width wheels with 3/4" roller bearings are supplied with 1/2" spanner bushing.

Caster Concepts offers the highest quality domestic mold on rubber wheels. Our mold-on rubber wheels consist of a soft black, 70 durometer rubber tread permanently bonded Class 30 gray iron centers. Mold-on rubber wheels provide excellent floor protection, a cushioned and quiet ride for the product being transported, and they absorb shock and vibration.

Neoprene and high load compounds are available, please contact the factory.



**APPLICATIONS**

Excellent for moist and wet environments, food service equipment, small waste bins, factory use, platform trucks and hotel equipment.

WHEEL		CAPACITY		PART NUMBER				
Dia.	Width	Capacity	Hub Length	Bore	Straight Roller	Precision Tapered	Less Bearing	Wt.
5	2.00	400	2 3/16	1 3/16			05200-70-19	2.5
5	2.00	400	2 3/16	3/4	05201-70-12			2.5
6	2.00	425	2 3/16	1 3/16			06200-70-19	4.5
6	2.00	425	2 3/16	3/4	06201-70-12			4.5
6	2.50	550	3 1/4	1 15/16			06250-70-31	6.5
6	2.50	550	3 1/4	1	06251-70-16			6.5
6	2.50	550	3 1/4	1 1/4	06251-70-20			6.5
6	2.50	550	3 1/2	3/4		06259-70-12		6.5
6	2.50	550	3 1/2	1		06259-70-16		6.5
6	3.00	700	3 1/4	1 15/16			06300-70-31	9.5
6	3.00	700	3 1/4	1	06301-70-16			9.5
6	3.00	700	3 1/4	1 1/4	06301-70-20			9.5
6	3.00	700	3 1/2	3/4		06309-70-12		9.5
6	3.00	700	3 1/2	1		06309-70-16		9.5
8	2.00	500	2 3/16	1 3/16			08200-70-19	7.0
8	2.00	500	2 3/16	3/4	08201-70-12			7.0
8	2.50	700	3 1/4	1 15/16			08250-70-31	9.5
8	2.50	700	3 1/4	1	08251-70-16			9.5
8	2.50	700	3 1/4	1 1/4	08251-70-20			9.5
8	2.50	700	3 1/2	3/4		08259-70-12		9.5
8	3.00	850	3 1/4	1 15/16			08300-70-31	12.5
8	3.00	850	3 1/4	1	08301-70-16			12.5
8	3.00	850	3 1/4	1 1/4	08301-70-20			12.5
8	3.00	850	3 1/2	3/4		08309-70-12		12.5
8	3.00	850	3 1/2	1		08309-70-16		12.5
8	3.00	850	3 1/2	1 1/4		08309-70-20		12.5



**CASTER CONCEPTS**

# MOLD ON RUBBER WHEELS

**3,000** maximum capacity  
LBS

WHEEL		CAPACITY			PART NUMBER			
Dia.	Width	Hub Length	Bore	Straight Roller	Precision Tapered	Less Bearing	Wt.	
10	2.50	800	3 1/4	1 15/16		10250-70-31	13.0	
10	2.50	800	3 1/4	1	10251-70-16		13.0	
10	2.50	800	3 1/4	1 1/4	10251-70-20		13.0	
10	2.50	800	3 1/2	3/4		10259-70-12	13.0	
10	2.50	800	3 1/2	1		10259-70-16	13.0	
10	3.00	1,000	3 1/4	1 15/16		10300-70-31	16.0	
10	3.00	1,000	3 1/4	1	10301-70-16		16.0	
10	3.00	1,000	3 1/4	1 1/4	10301-70-20		16.0	
10	3.00	1,000	3 1/2	3/4		10309-70-12	16.0	
10	3.00	1,000	3 1/2	1		10309-70-16	16.0	
10	4.00	1,400	4 1/4	2 7/16		10400-70-39	33.0	
10	4.00	1,400	4 1/4	1 1/4	10401-70-20		33.0	
10	4.00	1,400	4 1/4	1 1/2	10401-70-24		33.0	
10	4.00	1,400	4 1/2	1		10409-70-16	33.0	
10	4.00	1,400	4 1/2	1 1/4		10409-70-20	33.0	
12	2.50	900	3 1/4	1 15/16		12250-70-31	15.5	
12	2.50	900	3 1/4	1	12251-70-16		15.5	
12	2.50	900	3 1/4	1 1/4	12251-70-20		15.5	
12	2.50	900	3 1/2	3/4		12259-70-12	15.5	
12	2.50	900	3 1/2	1		12259-70-16	15.5	
12	3.00	1,125	3 1/4	1 15/16		12300-70-31	21.0	
12	3.00	1,125	3 1/4	1	12301-70-16		21.0	
12	3.00	1,125	3 1/4	1 1/4	12301-70-20		21.0	
12	3.00	1,150	3 1/2	3/4		12309-70-12	21.0	
12	3.00	1,150	3 1/2	1		12309-70-16	21.0	
12	4.00	1,600	4 1/4	2 7/16		12400-70-39	30.0	
12	4.00	1,600	4 1/4	1 1/4	12401-70-20		30.0	
12	4.00	1,600	4 1/4	1 1/2	12401-70-24		30.0	
12	4.00	1,600	4 1/2	1		12409-70-16	30.0	
12	4.00	1,600	4 1/2	1 1/4		12409-70-20	30.0	
16	4.00	1,450	4 1/4	2 7/16		16400-70-39	40.0	
16	4.00	1,450	4 1/4	1 1/4	16401-70-20		40.0	
16	4.00	1,450	4 1/4	1 1/2	16401-70-24		40.0	
16	4.00	1,450	4 1/2	1		16409-70-16	40.0	
16	4.00	1,450	4 1/2	1 1/4		16409-70-20	40.0	
16	5.00	1,500	5 1/4	2 7/16		16500-70-39	72.0	
16	5.00	1,500	5 1/4	1 1/4	16501-70-20		72.0	
16	5.00	1,500	5 1/4	1 1/2	16501-70-24		72.0	
16	5.00	1,500	5 1/2	1		16509-70-16	72.0	
16	5.00	1,500	5 1/2	1 1/4		16509-70-20	72.0	
18	5.00	2,800	5 1/4	2 7/16		18500-70-39	90.0	
18	5.00	2,800	5 1/4	1 1/4	18501-70-20		90.0	
18	5.00	2,800	5 1/4	1 1/2	18501-70-24		90.0	
18	5.00	2,800	5 1/4	3 1/4		18500-70-50	90.0	
18	5.00	2,800	5 1/4	2	18501-70-32		90.0	
18	5.00	2,800	5 1/2	1		18509-70-16	90.0	
18	5.00	2,800	5 1/2	1 1/4		18509-70-20	90.0	
18	5.00	2,800	5 1/2	1 1/2		18509-70-24	90.0	
20	5.00	3,000	5 1/4	2 7/16		20500-70-39	100.0	
20	5.00	3,000	5 1/4	1 1/4	20501-70-20		100.0	
20	5.00	3,000	5 1/4	1 1/2	20501-70-24		100.0	
20	5.00	3,000	5 1/4	3 1/4		20500-70-50	100.0	
20	5.00	3,000	5 1/4	2	20501-70-32		100.0	
20	5.00	3,000	5 1/2	1		20509-70-16	100.0	
20	5.00	3,000	5 1/2	1 1/4		20509-70-20	100.0	
20	5.00	3,000	5 1/2	1 1/2		20509-70-24	100.0	

CASTER CONCEPTS WILL MODIFY ANY CASTER TO MEET CUSTOMER SPECIFICATIONS  
Caster Concepts, Inc., 16000 E. Michigan Ave., Albion, MI 49224 (517) 629-8838 Facsimile (800) 800-0036 www.casterconcepts.com



**FEATURES**

A wide variety of keyway drive wheels are available. Keyway drive wheels are used in various power transmission applications. The keyways are cut to fit a keywayed shaft and are held in place with two set screws. One set screw is placed over the key and one at 90 degrees to the keyway. The most popular models in rubber and soft polyurethane are shown in the charts. Keyway wheels are manufactured in other materials, forged steel or cast iron, are available. Check the wheel widths on the chart and select the appropriate bushing. Costing for specific requirements is also readily available.



Bushing	ID	OD	Length	Key	Wheel Width
KWAA	0.50	1.19	2.44	0.125	2"
KWBB	0.75	1.19	2.44	0.188	2"
KWA	0.50	1.94	3.25	0.125	2-1/2" or 3"
KWB	0.75	1.94	3.25	0.188	2-1/2" or 3"
KWC	1.00	1.94	3.25	0.250	2-1/2" or 3"
KWD	1.25	1.94	3.25	0.250	2-1/2" or 3"
KWE	1.50	2.44	4.25	0.375	4"
KWEE	1.50	2.44	5.25	0.375	5"

WHEEL				PART NUMBER	CAPACITY
Dia.	Width	Hub Length	Bore	Keyway Size	

Drive Rollers--Mold on Rubber Roller Surfaces-Durometer hardness is 70-75A						
3	2.00	3 1/4 offset	1/2	1/8 x 1/16	03200-70-08-KWA	300
3	2.00	3 1/4 offset	3/4	3/16 x 3/32	03200-70-12-KWB	300
4	2.00	3 1/4 offset	1/2	1/8 x 1/16	04200-70-08-KWA	350
4	2.00	3 1/4 offset	3/4	3/16 x 3/32	04200-70-12-KWB	350
5	2.00	2 3/16	1/2	1/8 x 1/16	05200-70-08-KWAA	400
5	2.00	2 3/16	3/4	3/16 x 3/32	05200-70-12-KWBB	400
6	2.00	2 3/16	1/2	1/8 x 1/16	06200-70-08-KWAA	425
6	2.00	2 3/16	3/4	3/16 x 3/32	06200-70-12-KWBB	425
6	3.00	3 1/4	1/2	1/8 x 1/16	06300-70-08-KWA	500
6	3.00	3 1/4	3/4	3/16 x 3/32	06300-70-12-KWB	500
6	3.00	3 1/4	1	1/4 x 1/8	06300-70-16-KWC	500
6	3.00	3 1/4	1 1/4	1/4 x 1/8	06300-70-20-KWD	500
8	2.00	2 3/16	1/2	1/8 x 1/16	08200-70-08-KWA	500
8	2.00	2 3/16	3/4	3/16 x 3/32	08200-70-12-KWB	500
8	3.00	3 1/4	1/2	1/8 x 1/16	08300-70-08-KWA	850
8	3.00	3 1/4	3/4	3/16 x 3/32	08300-70-12-KWB	850
8	3.00	3 1/4	1	1/4 x 1/8	08300-70-16-KWC	850
8	3.00	3 1/4	1 1/4	1/4 x 1/8	08300-70-20-KWD	850
10	3.00	3 1/4	1/2	1/8 x 1/16	10300-70-08-KWA	800
10	3.00	3 1/4	3/4	3/16 x 3/32	10300-70-12-KWB	800
10	3.00	3 1/4	1	1/4 x 1/8	10300-70-16-KWC	1,000
10	3.00	3 1/4	1 1/4	1/4 x 1/8	10300-70-20-KWD	1,000
10	4.00	4 1/4	1 1/2	3/8 x 3/16	10400-70-24-KWE	1,400

Drive Rollers--Soft Polyurethane Roller Surfaces-Durometer hardness is 85A						
3	2.00	3-1/4 offset	1/2	1/8 x 1/16	03200-61-08-KWA	300
3	2.00	3-1/4 offset	3/4	3/16 x 3/32	03200-61-12-KWB	300
4	2.00	3-1/4 offset	1/2	1/8 x 1/16	04200-66-08-KWA	350
4	2.00	3-1/4 offset	3/4	3/16 x 3/32	04200-66-12-KWB	350
5	2.00	2 3/16	1/2	1/8 x 1/16	05200-61-08-KWAA	400
5	2.00	2 3/16	3/4	3/16 x 3/32	05200-61-12-KWBB	400
6	2.00	2 3/16	1/2	1/8 x 1/16	06200-61-08-KWAA	425
6	2.00	2 3/16	3/4	3/16 x 3/32	06200-61-12-KWBB	425
6	3.00	3 1/4	1/2	1/8 x 1/16	06300-66-08-KWA	800
6	3.00	3 1/4	3/4	3/16 x 3/32	06300-66-12-KWB	800
6	3.00	3 1/4	1	1/4 x 1/8	06300-66-16-KWC	1,600
6	3.00	3 1/4	1 1/4	1/4 x 1/8	06300-66-20-KWD	1,600
8	2.00	2 3/16	1/2	1/8 x 1/16	08200-61-08-KWA	500
8	2.00	2 3/16	3/4	3/16 x 3/32	08200-61-12-KWB	500
8	3.00	3 1/4	1/2	1/8 x 1/16	08300-66-08-KWA	800
8	3.00	3 1/4	3/4	3/16 x 3/32	08300-66-12-KWB	800
8	3.00	3 1/4	1	1/4 x 1/8	08300-66-16-KWC	1,600
8	3.00	3 1/4	1 1/4	1/4 x 1/8	08300-66-20-KWD	1,600
10	3.00	3 1/4	3/4	3/16 x 3/32	10300-66-12-KWB	800
10	3.00	3 1/4	1	1/4 x 1/8	10300-66-16-KWC	1,600
10	3.00	3 1/4	1 1/4	1/4 x 1/8	10300-66-20-KWD	1,600
10	4.00	4 1/4	1 1/2	3/8 x 3/16	10400-66-24-KWE	2,500
10	5.00	5 1/4	1 1/2	3/8 x 3/16	10500-66-24-KWEE	2,500
12	4.00	4 1/4	1 1/2	3/8 x 3/16	12400-66-24-KWE	3,000



FEATURES

**Bearings:** Precision ball or straight roller

**Temperature:** Maximum to 230° F.

**Hardness:** 75 Durometer A Scale

Softech wheels feature a soft, non-marking tread on a rust-free polyolefin core. Softech wheels reject floor debris, are highly resistant to most chemicals, grease, solvents and acids, and are stain resistant and zero water absorbing. Quiet, easy rolling and shock absorbing, these wheels are excellent for most floor surfaces.



APPLICATIONS

Softech wheels are excellent for platform trucks, food service equipment, textile carts, hotel equipment and other abusive applications.

WHEEL			CAPACITY		PART NUMBER				
Dia.	Width	Hub Length	Bore	Roller Bearing	Ball Bearing	Less Bearing	Wt.		
4	2.00	250	2 3/16	1 3/16		04200-72-19	1.00		
4	2.00	250	2 7/16	3/4	04201-72-12		1.00		
4	2.00	250	2 7/16	1/2		04204-72-08	1.00		
4	2.00	250	2 7/16	1/2		04202-72-08*	1.00		
5	2.00	275	2 3/16	1 3/16		05200-72-19	1.50		
5	2.00	275	2 7/16	3/4	05201-72-12		1.50		
5	2.00	275	2 7/16	1/2		05204-72-08	1.50		
5	2.00	275	2 7/16	1/2		05202-72-08*	1.50		
6	2.00	450	2 3/16	1 3/16		06200-72-19	2.00		
6	2.00	450	2 7/16	3/4	06201-72-12		2.00		
6	2.00	450	2 7/16	1/2		06204-72-08	2.00		
6	2.00	450	2 7/16	1/2		06202-72-08*	2.00		
8	2.00	600	2 3/16	1 3/16		08200-72-19	2.25		
8	2.00	600	2 7/16	3/4	08201-72-12		2.25		
8	2.00	600	2 7/16	1/2		08204-72-08	2.25		
8	2.00	600	2 7/16	1/2		08202-72-08*	2.25		

\* Constructed with precision ball bearings. All dimensions are in inches. All weights are in pounds.

KEYWAY & SOFTECH WHEELS 600 lbs maximum capacity



## FEATURES

**Bearings:** Precision Ball or Straight Roller

**Temperature:** Maximum to 230° F

**Hardness:** 45-65 Durometer D scale

Envirothane wheels feature a solid, non-marking polyurethane used for high load capacities. This top quality wheel will not damage floors and will not develop flat spots under standing loads. Tested for medium load capacities, the Envirothane wheel is harder than soft rubber. Envirothane wheels resist most chemicals, offer good floor protection and are completely washable. The one piece solid Envirothane makes it virtually maintenance free.



## APPLICATIONS

Envirothane wheels are excellent for tow line applications, platform trucks, large stock trucks, textile carts, food service equipment and other abusive applications.

WHEEL		CAPACITY			PART NUMBER				
Dia.	Width	Capacity	Hub Length	Bore	Roller Bearing	Ball	Less Bearing	Wt.	
4	2.00	650	2 3/16	1 3/16			04200-62-19	1.5	
4	2.00	650	2 7/16	3/4	04201-62-12			1.5	
4	2.00	650	2 7/16	1/2		04204-62-08		1.5	
4	2.00	650	2 7/16	1/2		04202-62-08*		1.5	
5	2.00	800	2 3/16	1 3/16			05200-62-19	2.0	
5	2.00	800	2 7/16	3/4	05201-62-12			2.0	
5	2.00	800	2 7/16	1/2		05204-62-08		2.0	
5	2.00	800	2 7/16	1/2		05202-62-08*		2.0	
6	2.00	950	2 3/16	1 3/16			06200-62-19	2.5	
6	2.00	950	2 7/16	3/4	06201-62-12			2.5	
6	2.00	950	2 7/16	1/2		06204-62-08		2.5	
6	2.00	950	2 7/16	1/2		06202-62-08*		2.5	
6	2.50	1,200	2 3/4	1 15/16			06255-62-31	7.5	
6	2.50	1,200	2 3/4	1	06255-62-16			7.5	
6	2.50	1,200	2 3/4	1 1/4	06255-62-20			7.5	
6	2.50	1,200	3	3/4		06256-62-12		7.5	
8	2.00	1,100	2 3/16	1			08200-62-19	3.7	
8	2.00	1,100	2 3/16	3/4	08201-62-12			3.7	
8	2.00	1,100	2 7/16	1/2		08204-62-08		3.7	
8	2.00	1,100	2 7/16	1		08202-62-08*		3.7	
8	2.50	1,600	2 3/4	1 15/16			08255-62-31	8.5	
8	2.50	1,600	2 3/4	1	08255-62-16			8.5	
8	2.50	1,600	2 3/4	1	08255-62-20			8.5	
8	2.50	1,600	3	1		08256-62-12		8.5	

\*Constructed with precision ball bearings  
All dimensions are in inches. All weights are in pounds.