



CASTER CONCEPTS

# 99 SERIES SUPER HEAVY DUTY CASTERS 35,000<sup>maximum capacity</sup> LBS FOR SEVERE DUTY

## FEATURES

**Swivel Section:** Machined from C-1045 hot forged steel which has been precision machined for bearings. The swivel section features dual 9" and 12" diameter through hardened load races that use 7/8" diameter steel balls.

**Kingpin:** 1-1/2" diameter kingpin integrally forged into top plate features a slotted adjusting nut and heavy duty 1-1/2" sealed tapered thrust bearing

**Legs:** 3/4" legs are continuously welded both inside and outside for the greatest strength

**Axle:** 2" alloy steel

**Lubrication:** Pre-lubricated before shipping

**Wheel:** Available in single and dual-wheel configurations. Single wheel diameters range from 12" to 28". Dual wheel diameters range from 10" to 22" as standard.

**Finish:** Water based acrylic black paint



2-99-22121-69-1 shown with optional VSL

## BENEFITS

The 99 Series platform with heavy duty swivel casters is the ideal choice when payload protection far exceeds the capacity of the caster. The dual load race design assures smooth rotation of the caster and superior load capacity. Priced at production prices, the series offers flexibility and comfort in product design.

## OPTIONS

### Brakes

- Poly Cam: P
- Face Contact: F

### Swivel Locks

- Vertical Mounted V

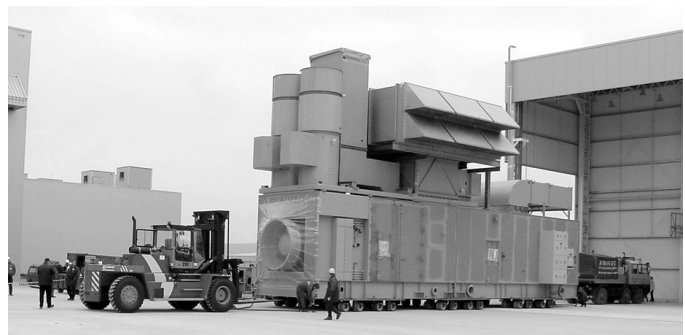
Sealed Wheels: SW

Toe Guard: TG

99 series swivel sections are used as a platform for many custom designed applications. Consult factory.

## APPLICATIONS

Optimal for die handling, marine and automotive applications, the 99 Series also meets the needs for aerospace and aircraft ground support equipment.



Super Duty Wheel Casters moving a portable power generator into a test facility.



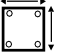
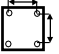
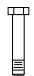
**CASTER CONCEPTS**

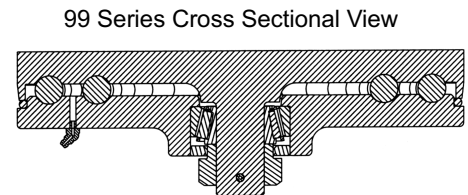
# 99 SERIES SUPER HEAVY DUTY CASTERS **35,000** maximum capacity LBS *FOR SEVERE DUTY*

99 SERIES SUPER HEAVY DUTY CASTERS 35,000 lbs maximum capacity

WHEEL			CAPACITY			PART NUMBER
Dia.	Width	Material	Needle Bearing	OAH	Swivel Lead	Needle Bearing
<b>SINGLE WHEEL</b>						
12	5.00	Ductile	18,000	16.50	3.00	99-12501-12-1
12	5.00	H.D. Polyurethane	7,500	16.50	3.00	99-12501-67-1
15	9.00	Polyurethane Press On	8,700	19.50	3.50	99-15901-69-1
18	9.00	Polyurethane Press On	10,900	22.00	4.50	99-18901-69-1
22	8.00	Polyurethane Press On	11,000	26.00	5.50	99-22801-69-1
22	12.00	Polyurethane Press On	17,500	26.00	5.50	99-22121-69-1
28	12.00	Polyurethane Press On	21,000	32.00	6.00	99-28121-69-1
28	16.00	Polyurethane Press On	29,000	32.00	6.00	99-28161-69-1
<b>DUAL WHEEL</b>						
10	4.00	H.D. Forged Steel	35,000	14.50	3.00	2-99-10401-21-1
12	5.00	Ductile Iron	35,000	16.50	3.00	2-99-12501-12-1
12	5.00	HL Polyurethane	15,000	16.50	3.00	2-99-12501-67-1
18	9.00	Polyurethane Press On	21,800	22.00	4.50	2-99-18901-69-1
22	8.00	Polyurethane Press On	23,000	26.00	5.50	2-99-22801-69-1
22	12.00	Polyurethane Press On	35,000	26.00	5.50	2-99-22121-69-1

All dimensions are in inches. All weights are in pounds.

 Top Plate Size	 Bolt Hole Spacing	 Bolt Diameter
Std: 14 x 14	12 x 12	0.75



**THE 99 SERIES PLATFORM CAN BE HIGHLY CUSTOMIZED FOR A BROAD RANGE OF APPLICATIONS.**

**CASTER CONCEPTS WILL MODIFY ANY CASTER TO MEET CUSTOMER SPECIFICATIONS**

Caster Concepts, Inc., 16000 E. Michigan Ave., Albion, MI 49224 (517) 629-8838 Facsimile (800) 800-0036 www.casterconcepts.com